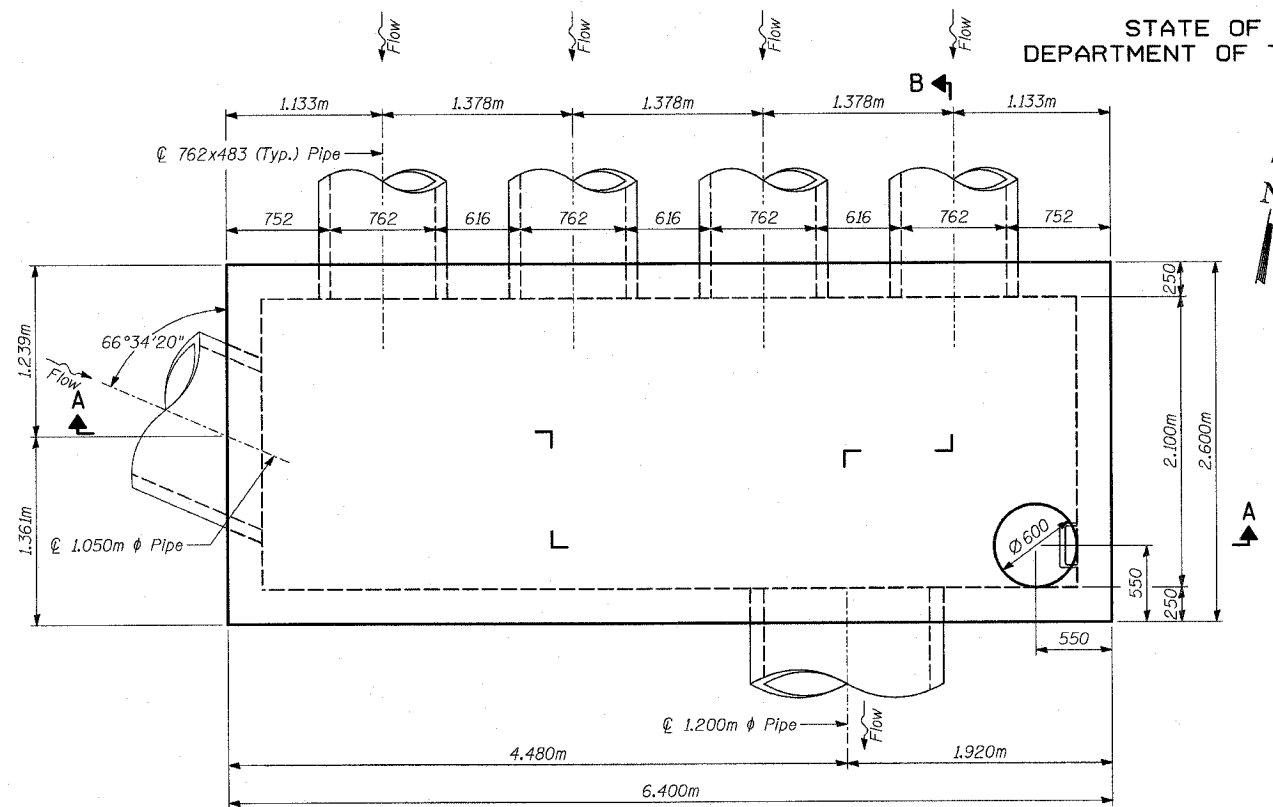
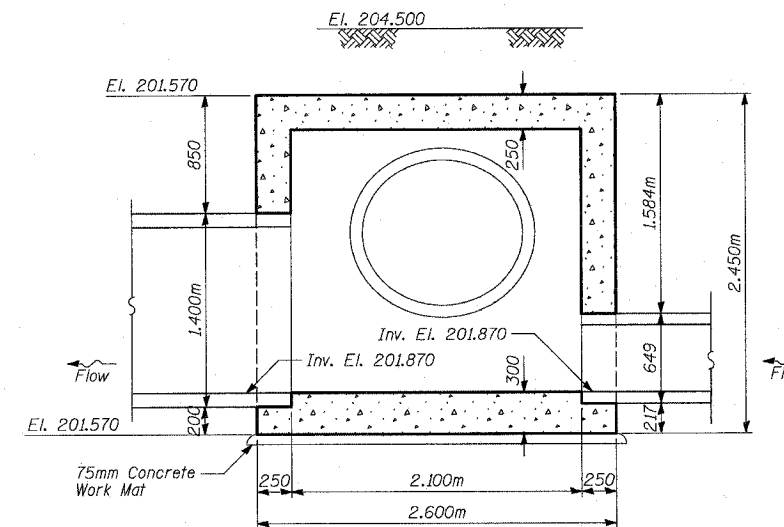


STATE OF ILLINOIS
DEPARTMENT OF TRANSPORTATION

FAP	SECTION	COUNTY	ROUTE	SHEET	SHEET NO. 1 3 SHEETS
337	20R-5	LAKE	582	219	
FED. ROAD DIST. NO. 7		BLINDS	FED. AID PROJECT		Contract No. 60881
D-91-552-99					



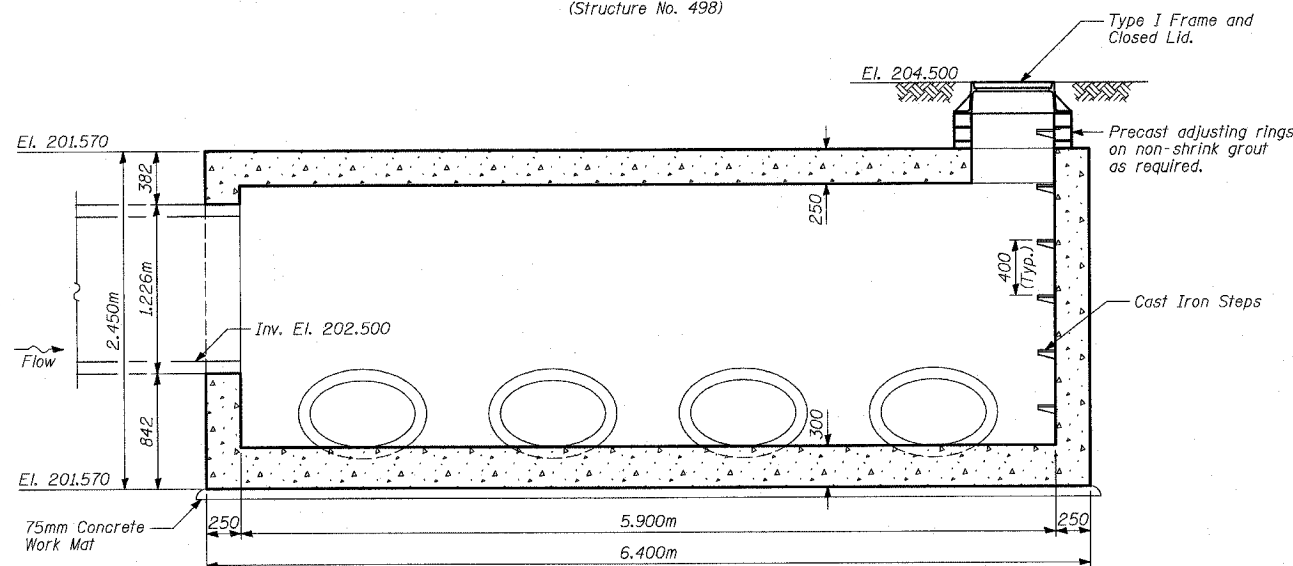
PLAN
(Structure No. 498)



SECTION B-B

GENERAL NOTES:

- All pipe openings are based on Wall A, ASTM C76, coordinate openings with pipe supplier.
- All dimensions are in millimeters (mm) except as noted.
- Elevations are in meters.
- All hardware and cast Iron Steps are included with the cost of the structure.
- Cast Iron Steps shall be gray iron conforming to the requirements of Article 1006.14 of the Standard Specifications.
- See Standard 602701 for details of cast Iron Steps.
- Junction Chamber may be constructed of precast reinforced concrete sections. All joints shall be rubber gasketed.
- For additional information, see Specifications.
- For reinforcement details, see Sheets 2 & 3 of 3.
- For Station and Offset, see "Drainage Schedules".
- Concrete Compressive Strength $f'c = 24$ MPa.
- Reinforcement Yield Strength $f_y = 400$ MPa.
- All concrete edges shall be chamfered 20mm.
- All construction joints shall be bonded.



SECTION A-A

TYLINT INTERNATIONAL

DESIGNED	MI, DJR
CHECKED	TD
DRAWN	DJR
CHECKED	TD

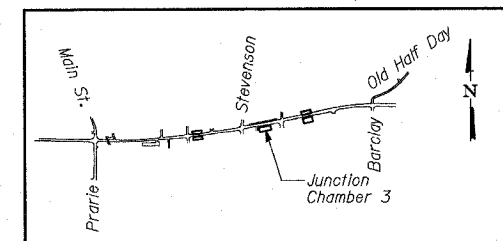
DATE 03-22-2004

TOTAL BILL OF MATERIAL

ITEM	UNIT	TOTAL
Junction Chamber, No. 3	EACH	1



Signed *Heather J. Gaffney*
Heather J. Gaffney, S.E., Ill. Lic. No. 081-004961
Expires 11-30-2004
Date 3/22/04
For drawings 1 thru 3 of 3



LOCATION SKETCH

GENERAL PLAN & SECTION

JUNCTION CHAMBER 3
STA. 103+776.300
IL ROUTE 22
FAP 337 SECTION 20R-5
IL RTE 83 TO US 45/IL 21
LAKE COUNTY