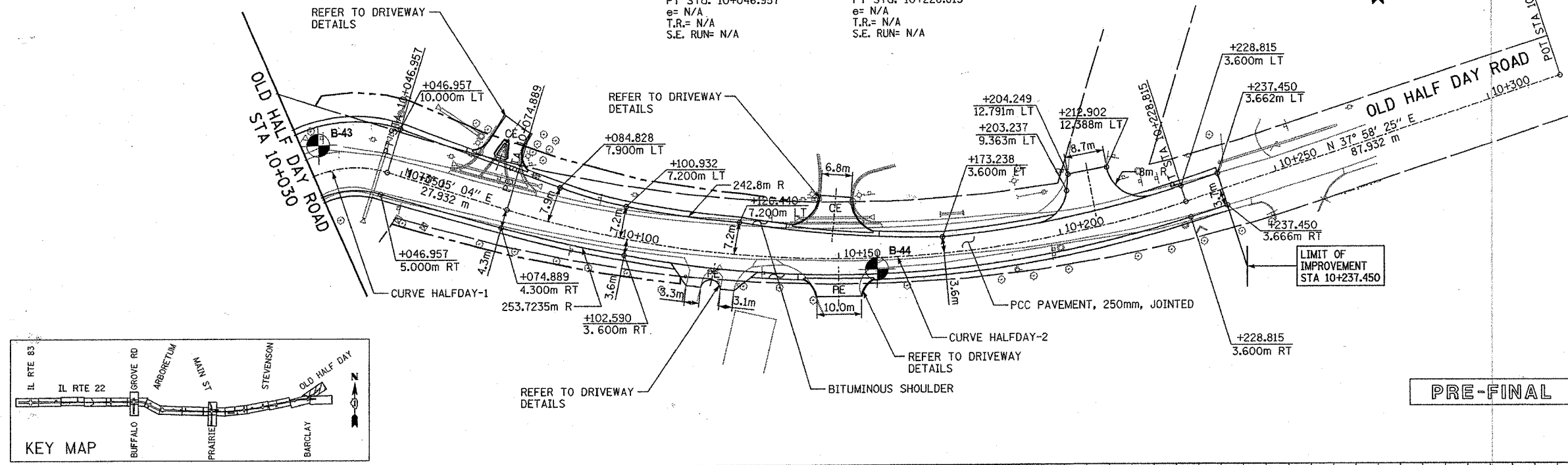


F.A.P. RTE.	SECTION	COUNTY	TOTAL SHEETS	SHEET NO.
337		LAKE	562	180
STA. 10+030		TO STA. 10+250		
FED. ROAD DIST. NO.		ILLINOIS	FED. AID PROJECT	
0-91-552-99		6088		

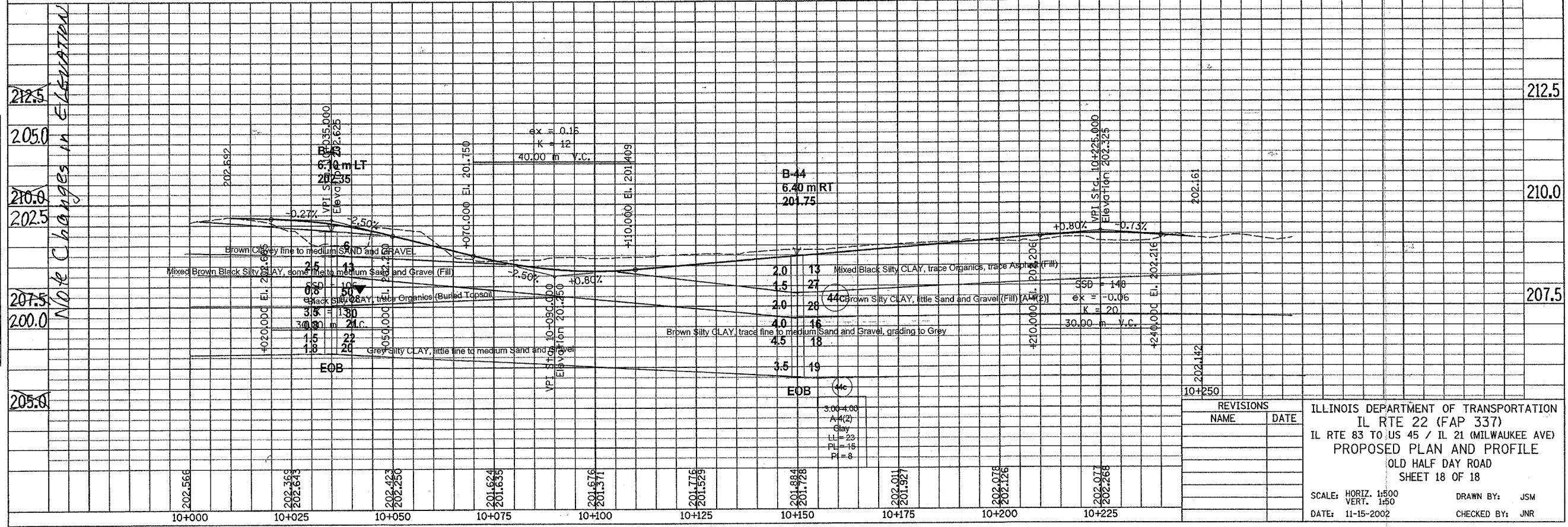
Prop. Curve HALFDAY-1
 PI Sta. 10+034.365
 $\Delta = 72^\circ 50' 56''$ (RT)
 T = 17.415 m
 R = 23.600 m
 L = 30.006 m
 E = 5.730 m
 PC Sta. 10+016.950
 PT Sta. 10+046.957
 e = N/A
 T.R. = N/A
 S.E. RUN = N/A

Prop. Curve HALFDAY-2
 PI Sta. 10+154.379
 $\Delta = 35^\circ 16' 38''$ (LT)
 T = 79.490 m
 R = 250.000 m
 L = 153.926 m
 E = 12.333 m
 PC Sta. 10+074.889
 PT Sta. 10+228.815
 e = N/A
 T.R. = N/A
 S.E. RUN = N/A

FINAL SURVEY PLOTTED	BY	DATE
NO. _____		
NOTE BOOK TEMPLATE AREAS CHECKED		



ORIGINAL SURVEY PLOTTED	BY	DATE
NO. _____		
NOTE BOOK TEMPLATE AREAS CHECKED		



REVISIONS	
NAME	DATE

ILLINOIS DEPARTMENT OF TRANSPORTATION
 IL RTE 22 (FAP 337)
 IL RTE 83 TO US 45 / IL 21 (MILWAUKEE AVE)
 PROPOSED PLAN AND PROFILE
 OLD HALF DAY ROAD
 SHEET 18 OF 18

SCALE: HORIZ. 1:500
 VERT. 1:50
 DATE: 11-15-2002

DRAWN BY: JSM
 CHECKED BY: JNR