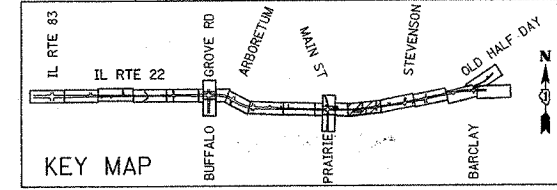
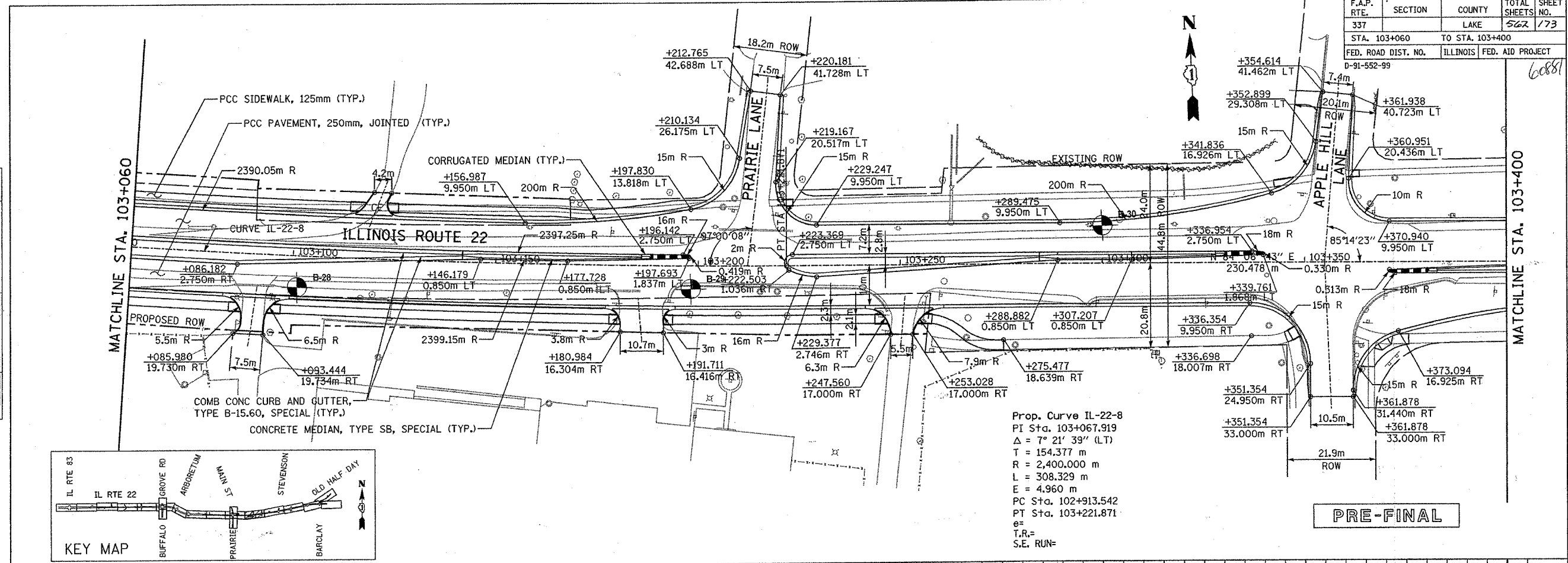


F.A.P. RTE.	SECTION	COUNTY	TOTAL SHEETS	SHEET NO.
337		LAKE	562	173
STA. 103+060		TO STA. 103+400		
FED. ROAD DIST. NO.		ILLINOIS FED. AID PROJECT		
D-91-552-99		60881		

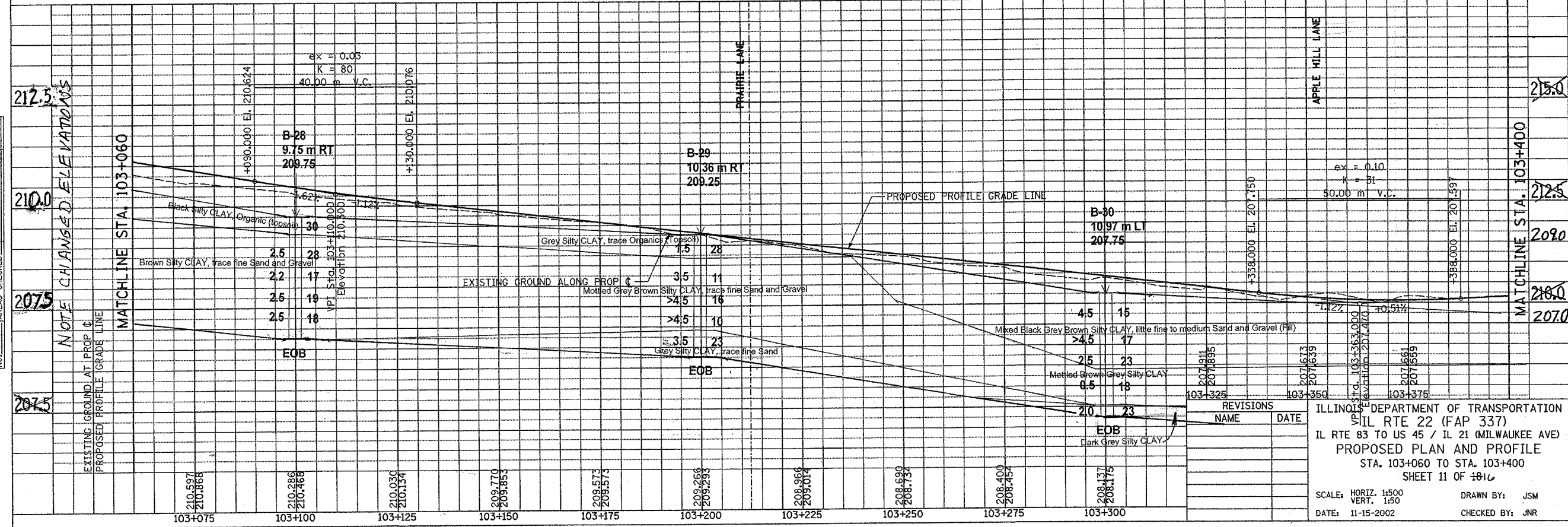
FINAL SURVEY	BY	DATE
SURVEY PLOTTED		
NOTE BOOK TEMPLATE		
AREAS CHECKED		
NO.		



Prop. Curve IL-22-8
 PI Sta. 103+067.919
 $\Delta = 7^\circ 21' 39''$ (LT)
 T = 154.377 m
 R = 2,400.000 m
 L = 308.329 m
 E = 4.960 m
 PC Sta. 102+913.542
 PT Sta. 103+221.871
 e =
 T.R. =
 S.E. RUN =

PRE-FINAL

ORIGINAL SURVEY	BY	DATE
SURVEY PLOTTED		
NOTE BOOK TEMPLATE		
AREAS CHECKED		
NO.		



NOTE CHANGED ELEVATIONS

EXISTING GROUND AT PROPOSED PROFILE GRADE LINE

REVISIONS	NAME	DATE
1		
2		
3		
4		
5		
6		
7		
8		
9		
10		
11		
12		
13		
14		
15		
16		
17		
18		
19		
20		
21		
22		
23		
24		
25		
26		
27		
28		
29		
30		
31		
32		
33		
34		
35		
36		
37		
38		
39		
40		
41		
42		
43		
44		
45		
46		
47		
48		
49		
50		
51		
52		
53		
54		
55		
56		
57		
58		
59		
60		
61		
62		
63		
64		
65		
66		
67		
68		
69		
70		
71		
72		
73		
74		
75		
76		
77		
78		
79		
80		
81		
82		
83		
84		
85		
86		
87		
88		
89		
90		
91		
92		
93		
94		
95		
96		
97		
98		
99		
100		

ILLINOIS DEPARTMENT OF TRANSPORTATION
 IL RTE 22 (FAP 337)
 IL RTE 83 TO US 45 / IL 21 (MILWAUKEE AVE)
 PROPOSED PLAN AND PROFILE
 STA. 103+060 TO STA. 103+400
 SHEET 11 OF 11

SCALE: HORIZ. 1:500
 VERT. 1:50
 DATE: 11-15-2002
 DRAWN BY: JSM
 CHECKED BY: JNR