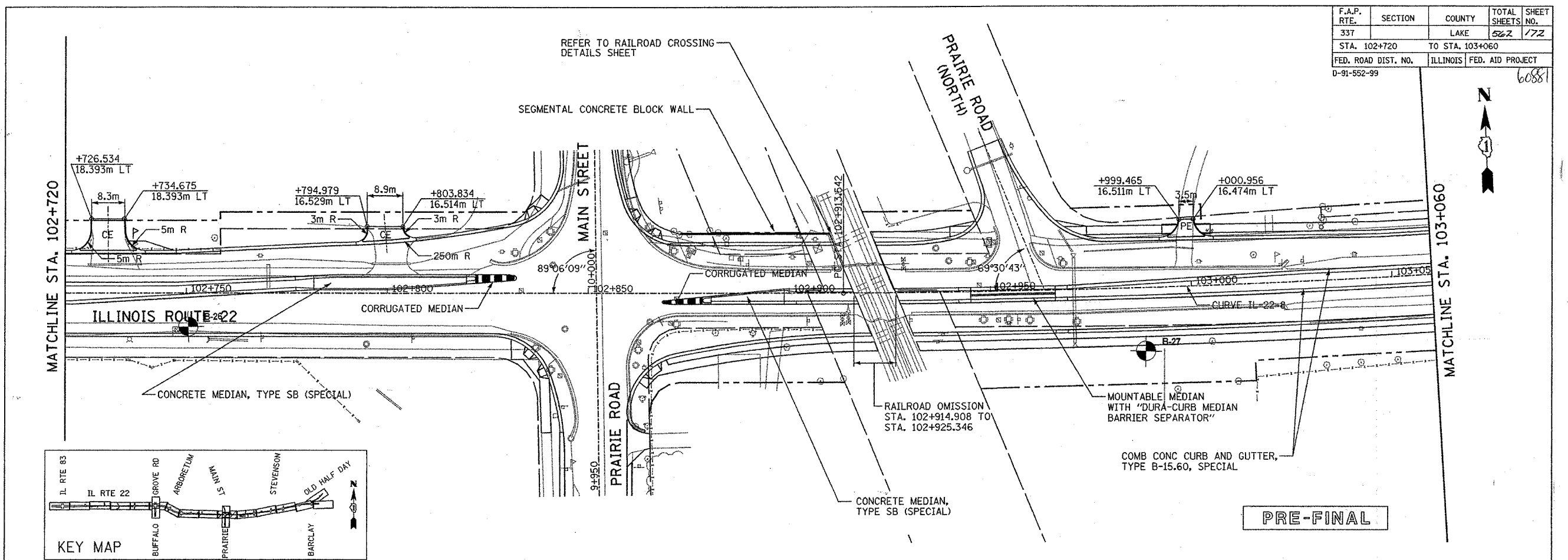
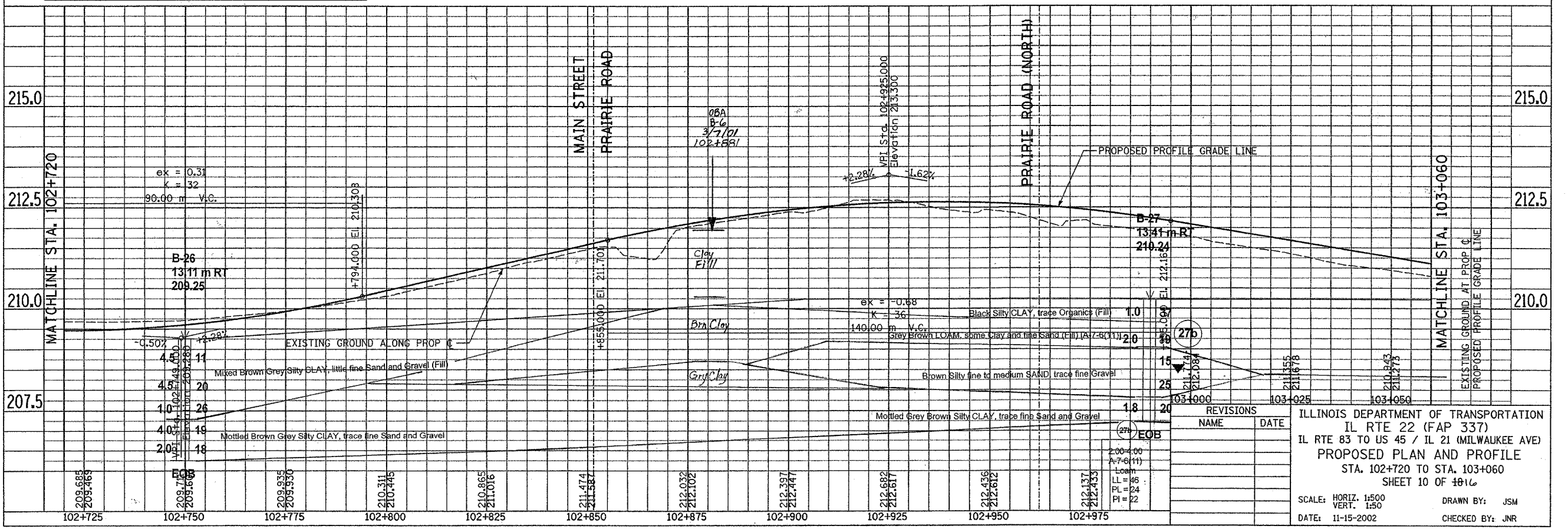


F.A.P. RTE.	SECTION	COUNTY	TOTAL SHEETS	SHEET NO.
337		LAKE	522	172
STA. 102+720		TO STA. 103+060		
FED. ROAD DIST. NO.		ILLINOIS FED. AID PROJECT		
D-91-552-99		60881		

FINAL SURVEY PLOTTED	BY	DATE
NOTE BOOK TEMPLATE		
AREAS CHECKED		
NO.		



ORIGINAL SURVEY PLOTTED	BY	DATE
NOTE BOOK TEMPLATE		
AREAS CHECKED		
NO.		



REVISIONS	NAME	DATE

ILLINOIS DEPARTMENT OF TRANSPORTATION  
 IL RTE 22 (FAP 337)  
 IL RTE 83 TO US 45 / IL 21 (MILWAUKEE AVE)  
 PROPOSED PLAN AND PROFILE  
 STA. 102+720 TO STA. 103+060  
 SHEET 10 OF 1016

SCALE: HORIZ. 1"=50'  
 VERT. 1"=5'  
 DATE: 11-15-2002  
 DRAWN BY: JSM  
 CHECKED BY: JNR

ILLINOIS DEPARTMENT OF TRANSPORTATION  
 01/22/2003 08:33:34