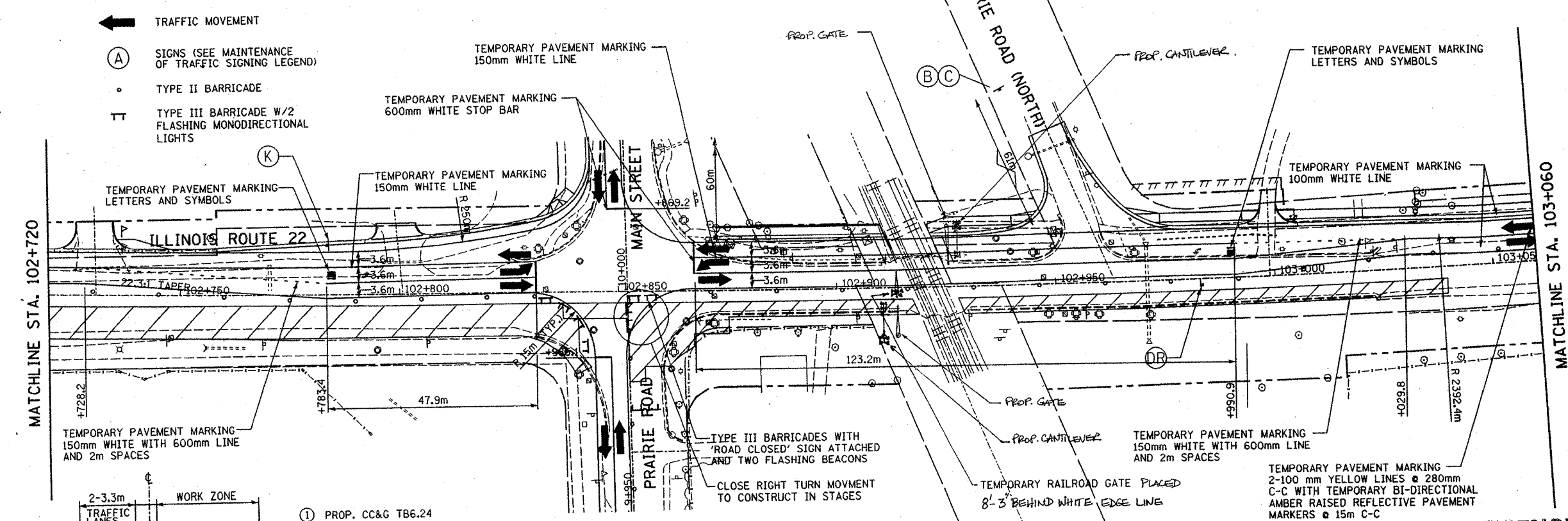
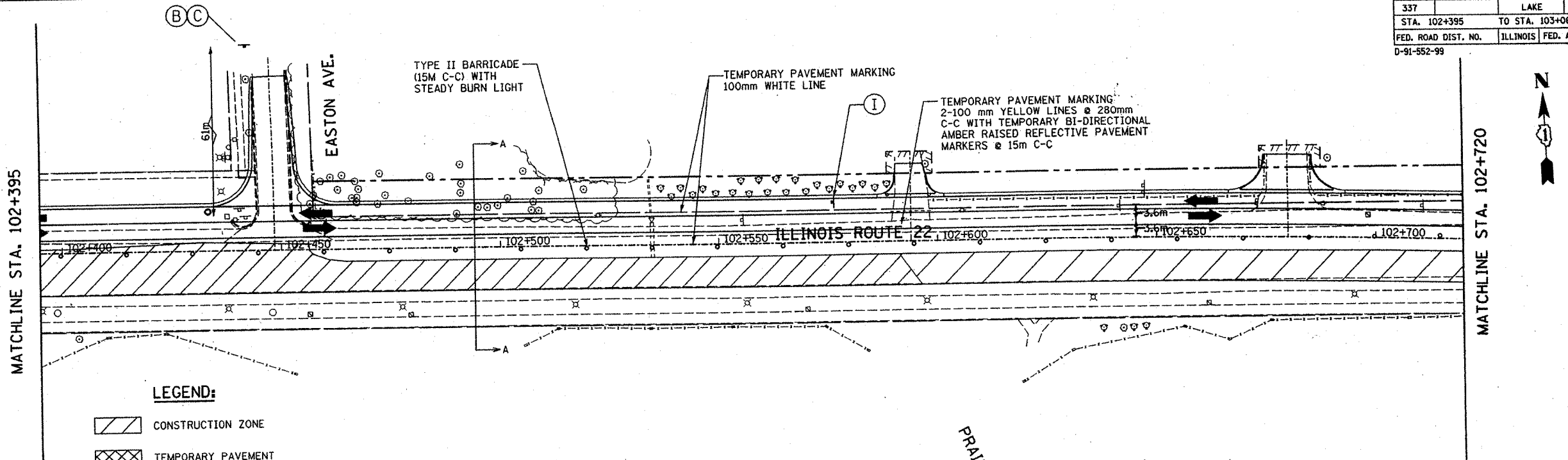


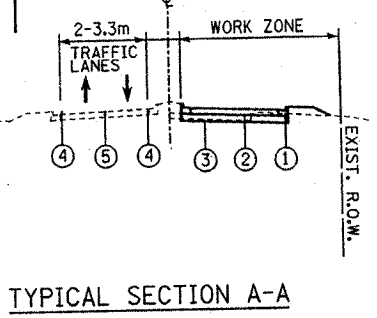
F.A.P. RTE.	SECTION	COUNTY	TOTAL SHEETS	SHEET NO.
337	102+395	LAKE	562	161
STA. 102+395		TO STA. 103+060		
FED. ROAD DIST. NO.	ILLINOIS	FED. AID PROJECT		
D-91-552-99		6881		

DATE	BY
ORIGINAL SURVEY PLOTTED	
NOTE BOOK TEMPLATE AREAS CHECKED	
NO.	

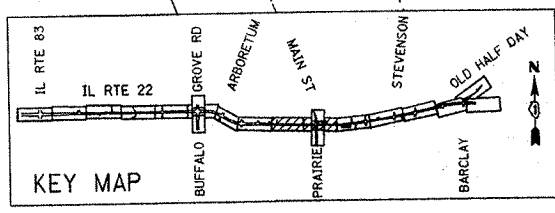
DATE	BY
ORIGINAL SURVEY PLOTTED	
NOTE BOOK TEMPLATE AREAS CHECKED	
NO.	



- LEGEND:**
- CONSTRUCTION ZONE
 - TEMPORARY PAVEMENT
 - TRAFFIC MOVEMENT
 - SIGNS (SEE MAINTENANCE OF TRAFFIC SIGNING LEGEND)
 - TYPE II BARRICADE
 - TYPE III BARRICADE W/2 FLASHING MONODIRECTIONAL LIGHTS



- ① PROP. CC&G TB6.24
- ② PROP. PCC PAVEMENT
- ③ PROP. AGGREGATE SUBGRADE
- ④ TEMP. PAVEMENT MARKING 100mm WHITE LINE
- ⑤ TEMP. PAVEMENT MARKING 2-100 mm YELLOW LINES @ 280mm C-C WITH TEMP. BI-DIRECTIONAL AMBER RAISED REFLECTIVE PAVEMENT MARKERS @ 15m C-C



REVISIONS	
NAME	DATE

FOR REFERENCE ONLY

ILLINOIS DEPARTMENT OF TRANSPORTATION
 IL RTE 22 (FAP 337)
 IL RTE 83 TO US 45 / IL 21 (MILWAUKEE AVE)
 MAINTENANCE OF TRAFFIC
 STAGE 2
 STA. 102+395 TO STA. 103+060
 SHEET 5 OF 9

SCALE: 1:500
 DATE: 06-12-2003
 DRAWN BY: JPM
 CHECKED BY: JNR