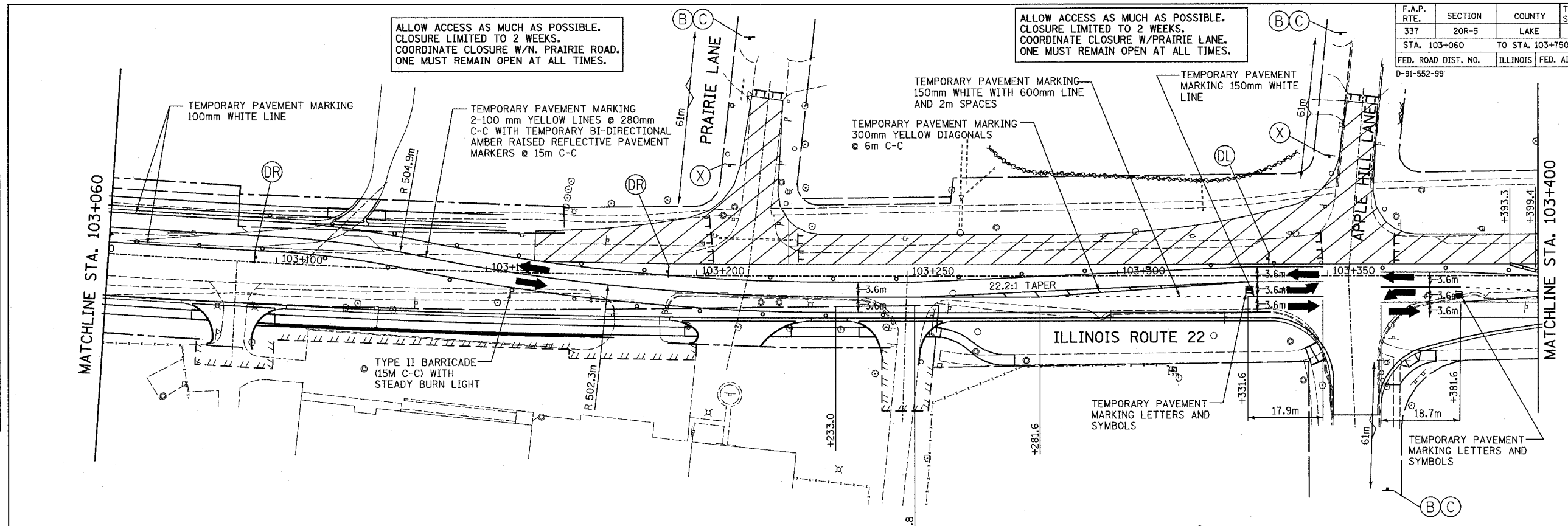


F.A.P. RTE.	SECTION	COUNTY	TOTAL SHEETS	SHEET NO.
337	20R-5	LAKE	562	106
STA. 103+060		TO STA. 103+750		
FED. ROAD DIST. NO.		ILLINOIS	FED. AID PROJECT	
D-91-552-99		60881		

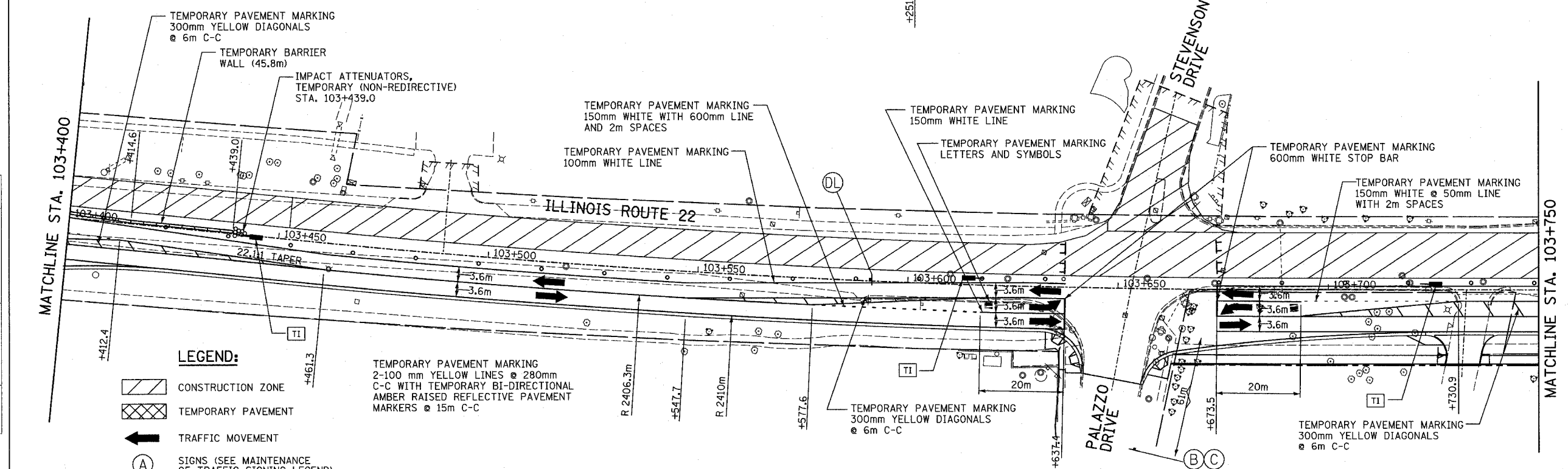
ALLOW ACCESS AS MUCH AS POSSIBLE.
CLOSURE LIMITED TO 2 WEEKS.
COORDINATE CLOSURE W/N. PRAIRIE ROAD.
ONE MUST REMAIN OPEN AT ALL TIMES.

ALLOW ACCESS AS MUCH AS POSSIBLE.
CLOSURE LIMITED TO 2 WEEKS.
COORDINATE CLOSURE W/PRAIRIE LANE.
ONE MUST REMAIN OPEN AT ALL TIMES.

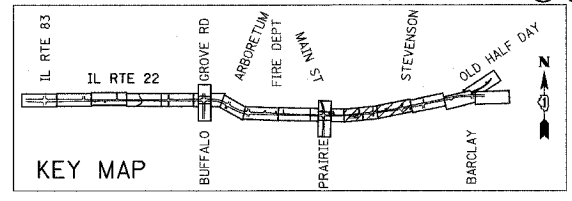
FINAL SURVEY	BY	DATE
SURVEY PLOTTED		
NOTE BOOK TEMPLATE		
AREAS CHECKED		
NO.		



ORIGINAL SURVEY	BY	DATE
SURVEY PLOTTED		
NOTE BOOK TEMPLATE		
AREAS CHECKED		
NO.		



- LEGEND:**
- CONSTRUCTION ZONE
 - TEMPORARY PAVEMENT
 - TRAFFIC MOVEMENT
 - SIGNS (SEE MAINTENANCE OF TRAFFIC SIGNING LEGEND)
 - TYPE II BARRICADE
 - TYPE III BARRICADE W/2 FLASHING BIDIRECTIONAL LIGHTS
 - TEMPORARY DRAINAGE CONNECTION
 - TEMPORARY INLET



REVISIONS	
NAME	DATE

ILLINOIS DEPARTMENT OF TRANSPORTATION
IL RTE 22 (FAP 337)
IL RTE 83 TO US 45 / IL 21 (MILWAUKEE AVE)
MAINTENANCE OF TRAFFIC
STAGE 2
STA. 103+060 TO STA. 103+750
SHEET 6 OF 9
SCALE: 1:500
DATE: 03-22-2004
DRAWN BY: JPM
CHECKED BY: JNR