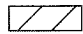






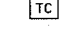


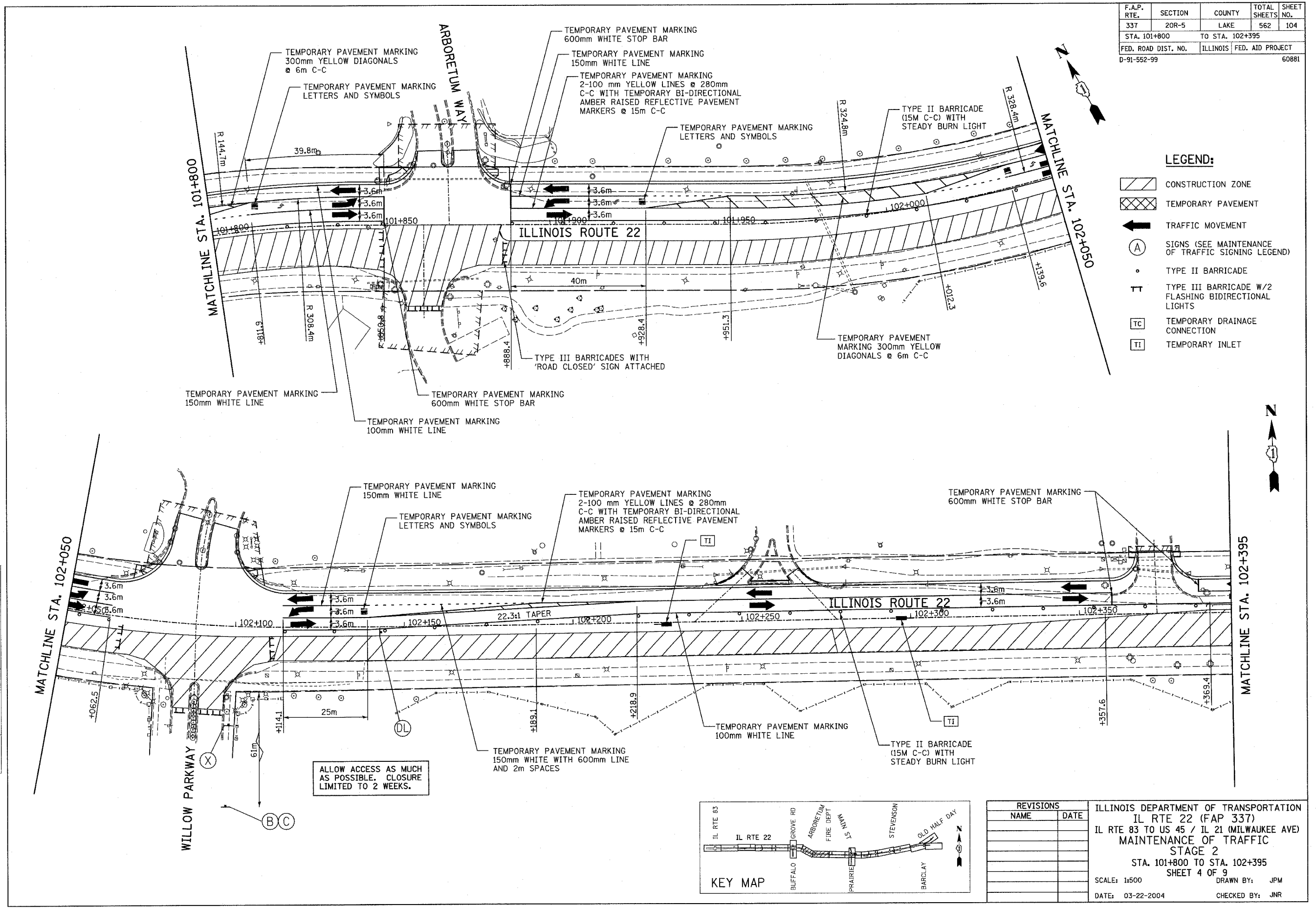
F.A.P. RTE.	SECTION	COUNTY	TOTAL SHEETS	SHEET NO.
337	20R-5	LAKE	562	104
STA. 101+800		TO STA. 102+395		
FED. ROAD DIST. NO.		ILLINOIS FED. AID PROJECT		
D-91-552-99		60881		

LEGEND:

-  CONSTRUCTION ZONE
-  TEMPORARY PAVEMENT
-  TRAFFIC MOVEMENT
-  SIGNS (SEE MAINTENANCE OF TRAFFIC SIGNING LEGEND)
-  TYPE II BARRICADE
-  TYPE III BARRICADE W/2 FLASHING BIDIRECTIONAL LIGHTS
-  TEMPORARY DRAINAGE CONNECTION
-  TEMPORARY INLET

BY	DATE
FINAL SURVEY PLOTTED	
NOTE BOOK TEMPLATE AREAS CHECKED	
NO.	

BY	DATE
ORIGINAL SURVEY PLOTTED	
NOTE BOOK TEMPLATE AREAS CHECKED	
NO.	



REVISIONS	
NAME	DATE

ILLINOIS DEPARTMENT OF TRANSPORTATION
 IL RTE 22 (FAP 337)
 IL RTE 83 TO US 45 / IL 21 (MILWAUKEE AVE)
 MAINTENANCE OF TRAFFIC
 STAGE 2
 STA. 101+800 TO STA. 102+395
 SHEET 4 OF 9
 SCALE: 1:500
 DATE: 03-22-2004
 DRAWN BY: JPM
 CHECKED BY: JNR

