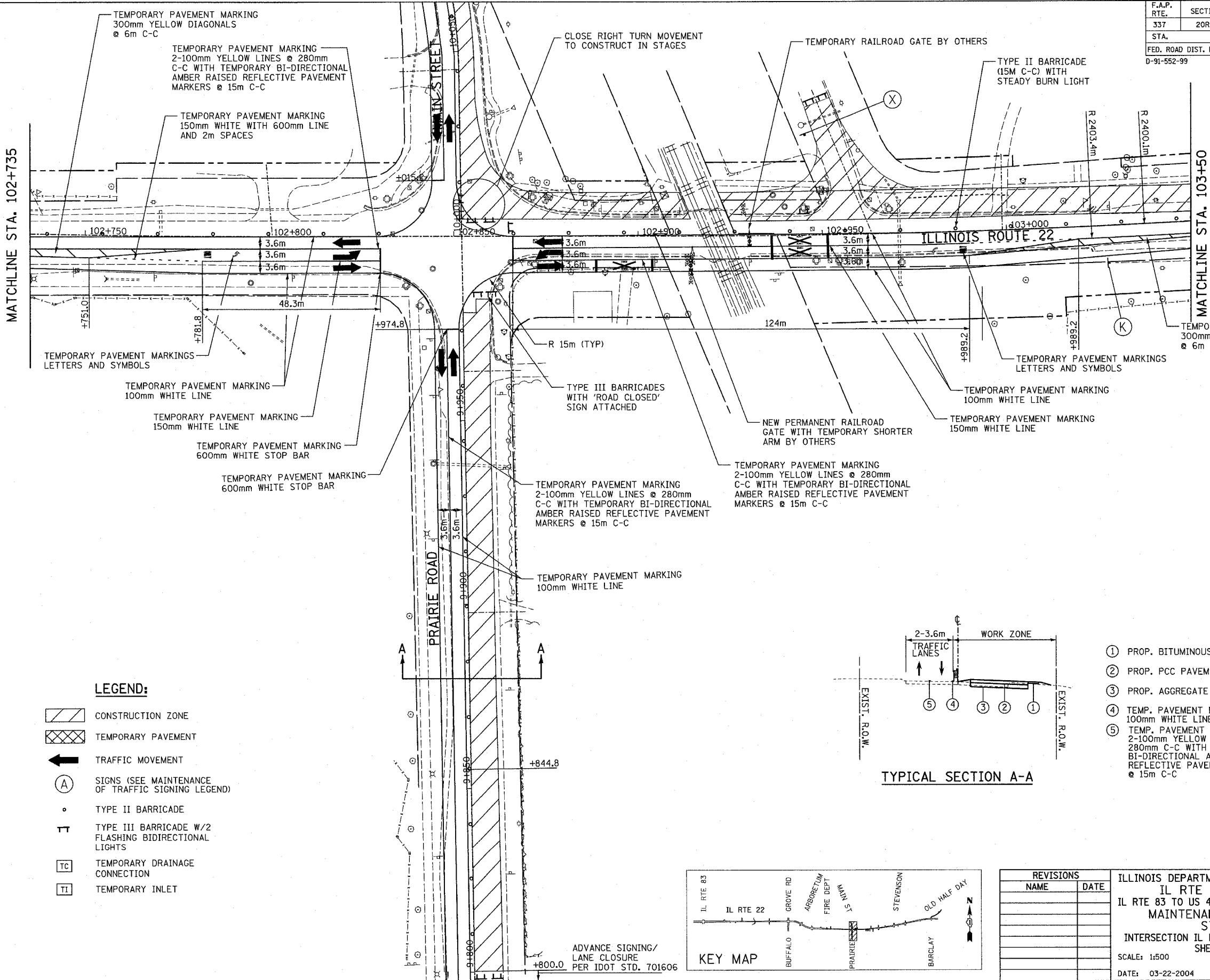


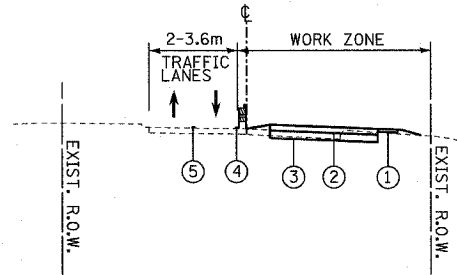
F.A.P. RTE.	SECTION	COUNTY	TOTAL SHEETS	SHEET NO.
337	20R-5	LAKE	562	99
STA.		TO STA.		
FED. ROAD DIST. NO.		ILLINOIS	FED. AID PROJECT	
D-91-552-99		60881		

FINAL SURVEY BOOK NO.	SURVEYED BY	DATE
NOTE BOOK NO.	PLOTTED BY	DATE
	TEMPLATE AREAS CHECKED	

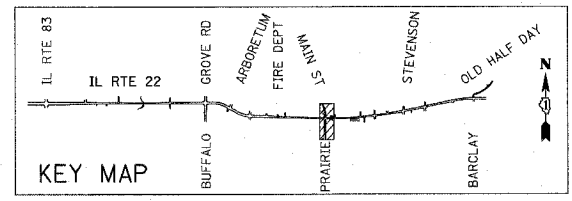
ORIGINAL SURVEY BOOK NO.	SURVEYED BY	DATE
	PLOTTED BY	DATE
	TEMPLATE AREAS CHECKED	



- LEGEND:**
- CONSTRUCTION ZONE
  - TEMPORARY PAVEMENT
  - TRAFFIC MOVEMENT
  - SIGNS (SEE MAINTENANCE OF TRAFFIC SIGNING LEGEND)
  - TYPE II BARRICADE
  - TYPE III BARRICADE W/2 FLASHING BIDIRECTIONAL LIGHTS
  - TEMPORARY DRAINAGE CONNECTION
  - TEMPORARY INLET



- ① PROP. BITUMINOUS SHLDR.
- ② PROP. PCC PAVEMENT
- ③ PROP. AGGREGATE SUBGRADE
- ④ TEMP. PAVEMENT MARKING 100mm WHITE LINE
- ⑤ TEMP. PAVEMENT MARKING 2-100mm YELLOW LINES @ 280mm C-C WITH TEMP. BI-DIRECTIONAL AMBER RAISED REFLECTIVE PAVEMENT MARKERS @ 15m C-C



REVISIONS	
NAME	DATE

ILLINOIS DEPARTMENT OF TRANSPORTATION  
 IL RTE 22 (FAP 337)  
 IL RTE 83 TO US 45 / IL 21 (MILWAUKEE AVE)  
 MAINTENANCE OF TRAFFIC  
 STAGE 1A  
 INTERSECTION IL RTE 22 AND PRAIRIE ROAD  
 SHEET 3 OF 4  
 SCALE: 1:500  
 DATE: 03-22-2004  
 DRAWN BY: JPM  
 CHECKED BY: JNR

ADVANCE SIGNING/  
 LANE CLOSURE  
 PER IDOT STD. 701606