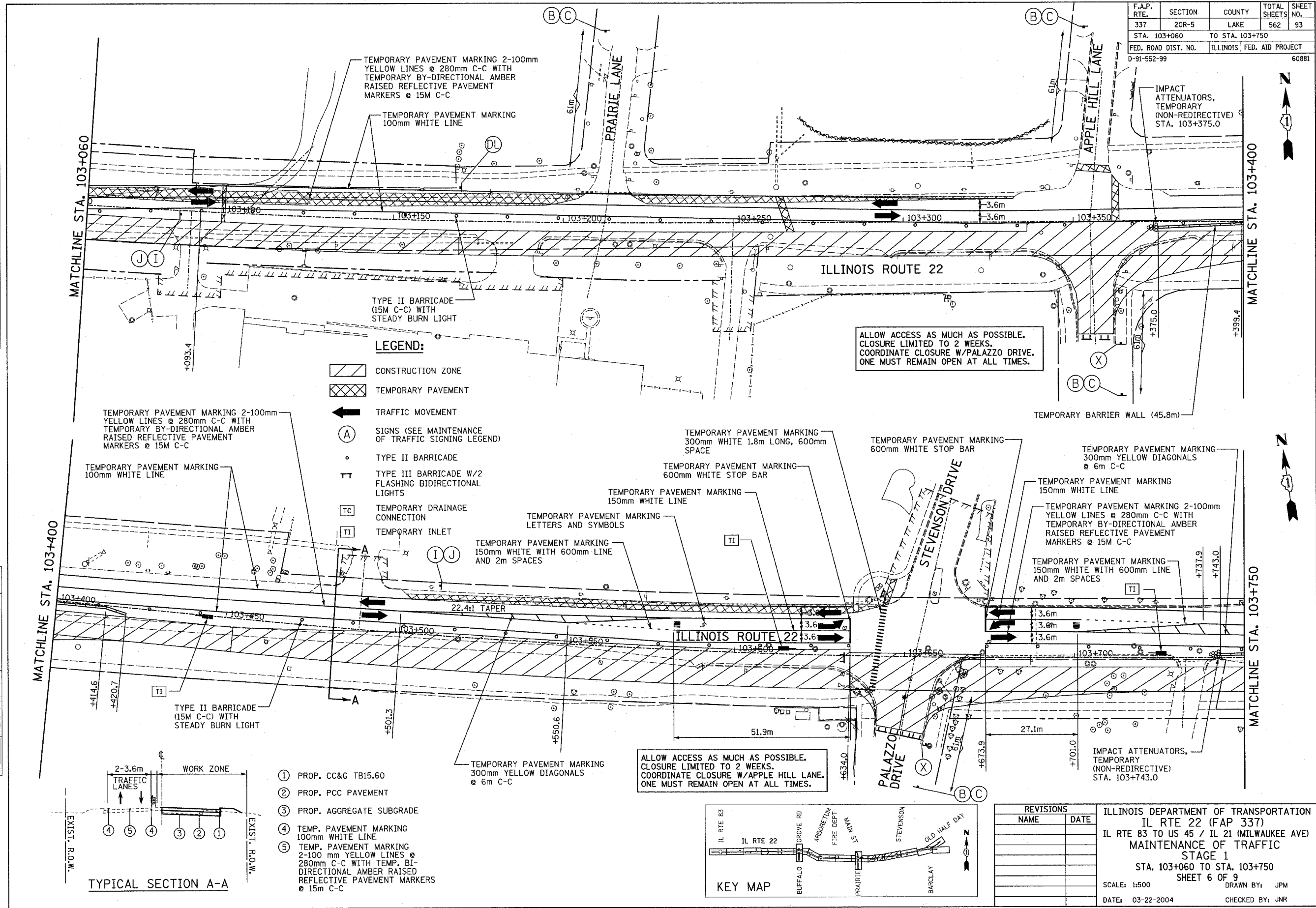


F.A.P. RTE.	SECTION	COUNTY	TOTAL SHEETS	SHEET NO.
337	20R-5	LAKE	562	93
STA. 103+060		TO STA. 103+750		
FED. ROAD DIST. NO.		ILLINOIS	FED. AID PROJECT	
D-91-552-99		60881		

BY	DATE
FINAL SURVEY	
PLOTTED	
NOTE BOOK	
AREAS CHECKED	
NO.	

BY	DATE
ORIGINAL SURVEY	
PLOTTED	
NOTE BOOK	
AREAS CHECKED	
NO.	



MATCHLINE STA. 103+400

MATCHLINE STA. 103+060

MATCHLINE STA. 103+400

MATCHLINE STA. 103+750

LEGEND:

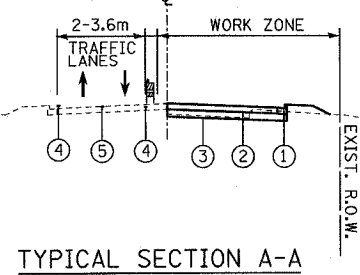
- CONSTRUCTION ZONE
- TEMPORARY PAVEMENT
- TRAFFIC MOVEMENT
- SIGNS (SEE MAINTENANCE OF TRAFFIC SIGNING LEGEND)
- TYPE II BARRICADE
- TYPE III BARRICADE W/2 FLASHING BIDIRECTIONAL LIGHTS
- TEMPORARY DRAINAGE CONNECTION
- TEMPORARY INLET

TEMPORARY PAVEMENT MARKING 2-100mm YELLOW LINES @ 280mm C-C WITH TEMPORARY BY-DIRECTIONAL AMBER RAISED REFLECTIVE PAVEMENT MARKERS @ 15M C-C

TEMPORARY PAVEMENT MARKING 100mm WHITE LINE

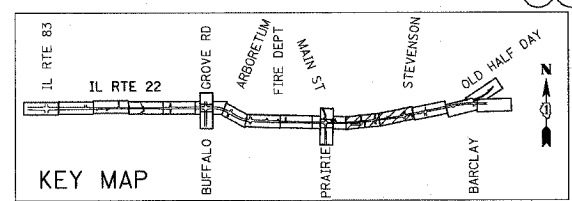
TYPE II BARRICADE (15M C-C) WITH STEADY BURN LIGHT

- ① PROP. CC&G TB15.60
- ② PROP. PCC PAVEMENT
- ③ PROP. AGGREGATE SUBGRADE
- ④ TEMP. PAVEMENT MARKING 100mm WHITE LINE
- ⑤ TEMP. PAVEMENT MARKING 2-100 mm YELLOW LINES @ 280mm C-C WITH TEMP. BI-DIRECTIONAL AMBER RAISED REFLECTIVE PAVEMENT MARKERS @ 15m C-C



ALLOW ACCESS AS MUCH AS POSSIBLE. CLOSURE LIMITED TO 2 WEEKS. COORDINATE CLOSURE W/PALAZZO DRIVE. ONE MUST REMAIN OPEN AT ALL TIMES.

ALLOW ACCESS AS MUCH AS POSSIBLE. CLOSURE LIMITED TO 2 WEEKS. COORDINATE CLOSURE W/APPLE HILL LANE. ONE MUST REMAIN OPEN AT ALL TIMES.



REVISIONS	
NAME	DATE

ILLINOIS DEPARTMENT OF TRANSPORTATION
 IL RTE 22 (FAP 337)
 IL RTE 83 TO US 45 / IL 21 (MILWAUKEE AVE)
 MAINTENANCE OF TRAFFIC
 STAGE 1
 STA. 103+060 TO STA. 103+750
 SHEET 6 OF 9
 SCALE: 1:500
 DATE: 03-22-2004
 DRAWN BY: JPM
 CHECKED BY: JNR