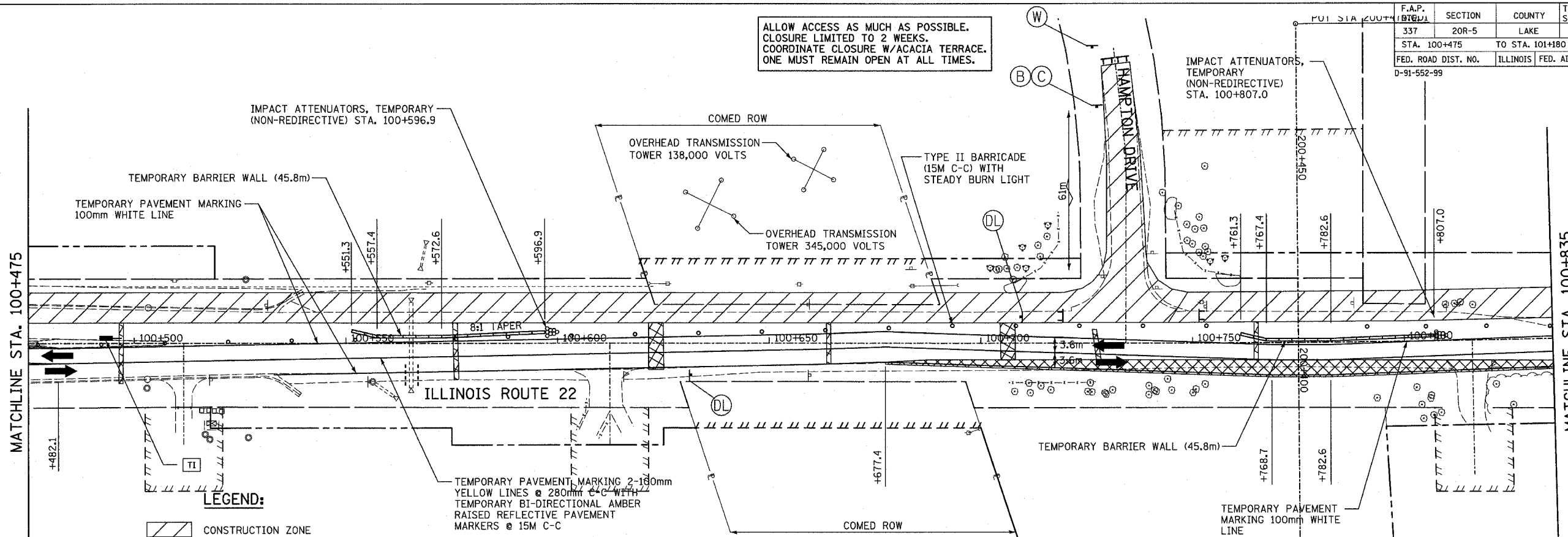


F.A.P. NO.	SECTION	COUNTY	TOTAL SHEETS	SHEET NO.
337	20R-5	LAKE	562	89
STA. 100+475	TO STA. 101+180			
FED. ROAD DIST. NO.	ILLINOIS	FED. AID PROJECT		
D-91-552-99			60881	

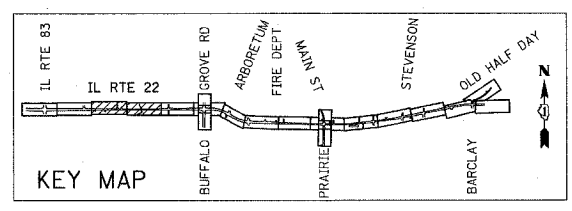
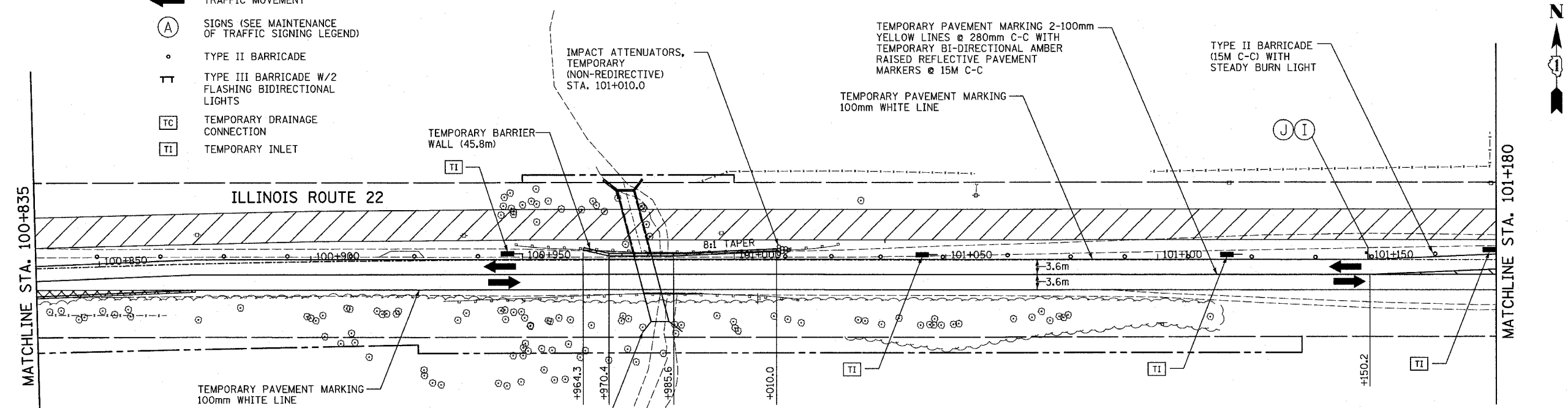
ALLOW ACCESS AS MUCH AS POSSIBLE.
CLOSURE LIMITED TO 2 WEEKS.
COORDINATE CLOSURE W/ACACIA TERRACE.
ONE MUST REMAIN OPEN AT ALL TIMES.

FINAL SURVEY	BY	DATE
SURVEYED		
CLOSED		
NOTE BOOK		
TEMPLATE		
AREAS CHECKED		
NO.		



- LEGEND:**
- CONSTRUCTION ZONE
 - TEMPORARY PAVEMENT
 - TRAFFIC MOVEMENT
 - SIGNS (SEE MAINTENANCE OF TRAFFIC SIGNING LEGEND)
 - TYPE II BARRICADE
 - TYPE III BARRICADE W/2 FLASHING BIDIRECTIONAL LIGHTS
 - TEMPORARY DRAINAGE CONNECTION
 - TEMPORARY INLET

ORIGINAL SURVEY	BY	DATE
PLOTTED		
NOTE BOOK		
TEMPLATE		
AREAS CHECKED		
NO.		



REVISIONS	
NAME	DATE

ILLINOIS DEPARTMENT OF TRANSPORTATION
IL RTE 22 (FAP 337)
IL RTE 83 TO US 45 / IL 21 (MILWAUKEE AVE)
MAINTENANCE OF TRAFFIC
STAGE 1
STA. 100+475 TO STA. 101+180
SHEET 2 OF 9
SCALE: 1:500
DATE: 03-22-2004
DRAWN BY: JPM
CHECKED BY: JNR