

FOR INDEX OF SHEETS, SEE SHEET NO. 2

PROJECT LOCATED IN VILLAGES OF LONG GROVE,  
BUFFALO GROVE AND LINCOLNSHIRE

**DESIGN DESIGNATION**

IL RTE 22: 3300 (22) ARTERIAL 8.10 (PCC-20)

**TRAFFIC DATA**

	ADT (2014)	DESIGN SPEED	POSTED SPEED
IL RTE 22	33,000	70 kmPH	70 kmPH

STATE OF ILLINOIS  
DEPARTMENT OF TRANSPORTATION  
DIVISION OF HIGHWAYS

**PLANS FOR PROPOSED HIGHWAY**

**FAP 337 (ILLINOIS RTE 22 – HALF DAY ROAD)**

**SECTION: 20R – 5**

**IL RTE 83 (MUNDELEIN ROAD) TO US 45 /IL 21  
(MILWAUKEE AVENUE)**

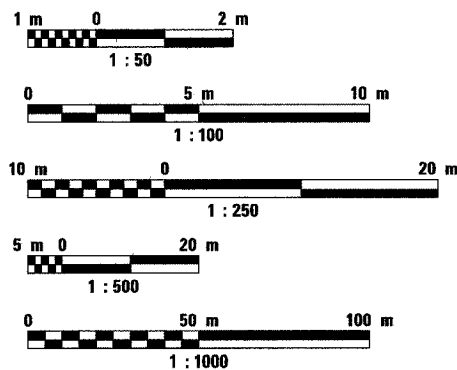
**ROADWAY RECONSTRUCTION, DRAINAGE,  
AND TRAFFIC SIGNAL MODERNIZATION**

**LAKE COUNTY**

**C-91-552-99**

R. 11 E.

**METRIC RATIOS**



FULL SIZE PLANS HAVE BEEN PREPARED USING STANDARD  
ENGINEERING SCALES. REDUCED SIZED PLANS WILL NOT  
CONFORM TO STANDARD SCALES. IN MAKING  
MEASUREMENTS ON REDUCED PLANS, THE ABOVE  
SCALES MAY BE USED.

J.U.L.I.E.  
JOINT UTILITY LOCATION INFORMATION FOR EXCAVATION  
1-800-992-0123

**CONTRACT NO. 60881**  
**JOB NO. C-91-552-99**

DISTRICT ONE DESIGNCONSULTANT SERVICES PROJECT  
MANAGER MANAR MASHIF (847) 705-4523

FAP 337 (IL 22)  
IMPROVEMENT BEGINS  
STA. 99 + 815.000

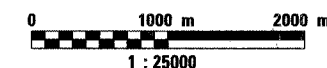
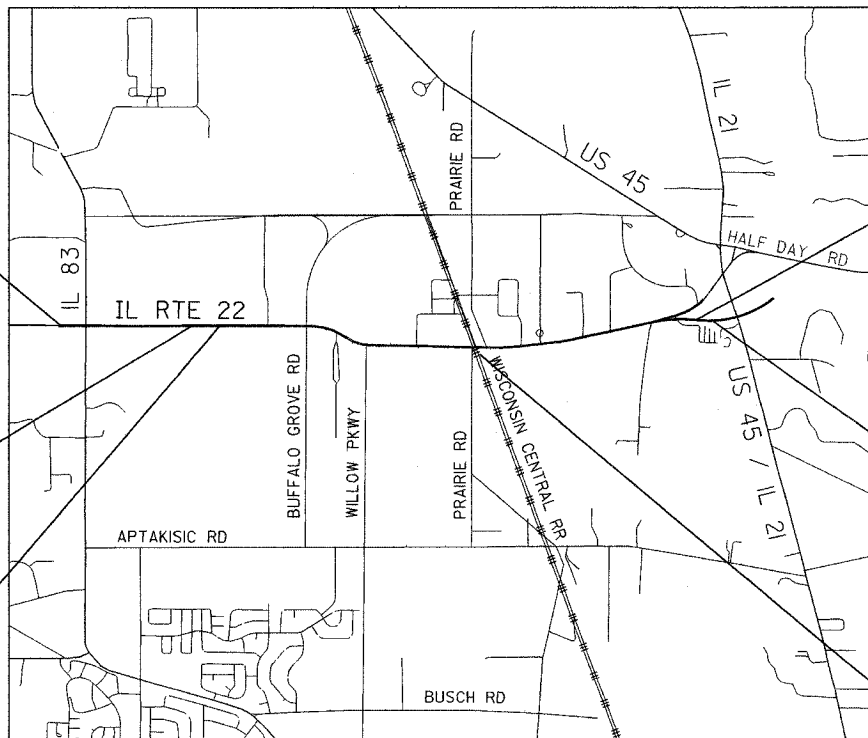
PEDESTRIAN UNDERPASS  
SINGLE BOX CULVERT  
3.0m LONG  
STRUCTURE NO. 049-T016  
AT IL 22 STA. 100 + 775.000

KILDEER CREEK  
SINGLE BOX CULVERT  
4.0m LONG  
STRUCTURE NO. 049-C003  
AT IL 22 STA. 100 + 978.573

UNNAMED TRIBUTARY  
DOUBLE BOX CULVERT  
4.1m LONG  
STRUCTURE NO. 049-C002  
AT IL 22 STA. 104 + 504.000

FAP 337 (IL 22)  
IMPROVEMENT ENDS  
STA. 104 + 600.000

RAILROAD  
OMISSION  
STA. 102 + 914.908 TO  
STA. 102 + 925.346

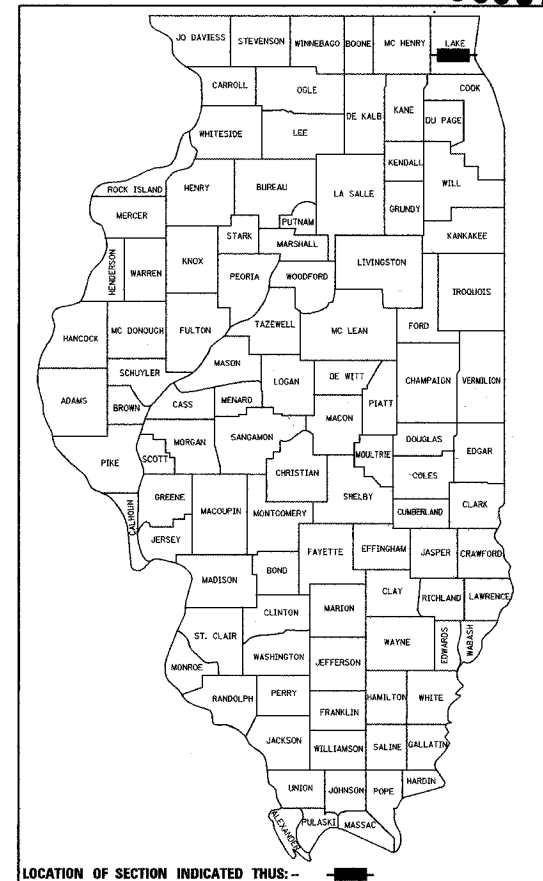


GROSS LENGTH OF PROJECT = 4785 m = 4.78 km  
NET LENGTH OF PROJECT = 4775 m = 4.78 km

VERNON TOWNSHIP

F.A.P. RTE.	SECTION	COUNTY	TOTAL SHEETS	SHEET NO.
337	20R-5	LAKE	564	1
FED. ROAD DIST. NO.	ILLINOIS	FED. AID PROJECT		

**D-91-552-99 #60881**



LOCATION OF SECTION INDICATED THUS: -

STATE OF ILLINOIS  
DEPARTMENT OF TRANSPORTATION  
DIVISION OF HIGHWAYS

SUBMITTED March 12, 2004

John P. Kraus DISTRICT ENGINEER

May 13, 2005  
Mike Hine ENGINEER OF DESIGN AND ENVIRONMENT

May 13, 2005  
Victor Madson DIRECTOR, DIVISION OF HIGHWAYS

PRINTED BY THE AUTHORITY OF THE STATE OF ILLINOIS

Signed Donald A. Jakesch  
Donald A. Jakesch, P.E., Il. Lic. No. 062-039374 For drawings  
Expires 11-30-2005  
Date March 10, 2004



**TYLIN INTERNATIONAL**  
5960 N. MILWAUKEE AVE.  
CHICAGO, IL 60646  
(773) 792-9000  
FAX: (773) 792-8335 WEB SITE: TYLIN.COM