

FAU	SECTION	COUNTY	TOTAL SHEETS	SHEET NO.
2760	1316RS-1	COOK	22	1

STATE OF ILLINOIS  
DEPARTMENT OF TRANSPORTATION  
DIVISION OF HIGHWAYS

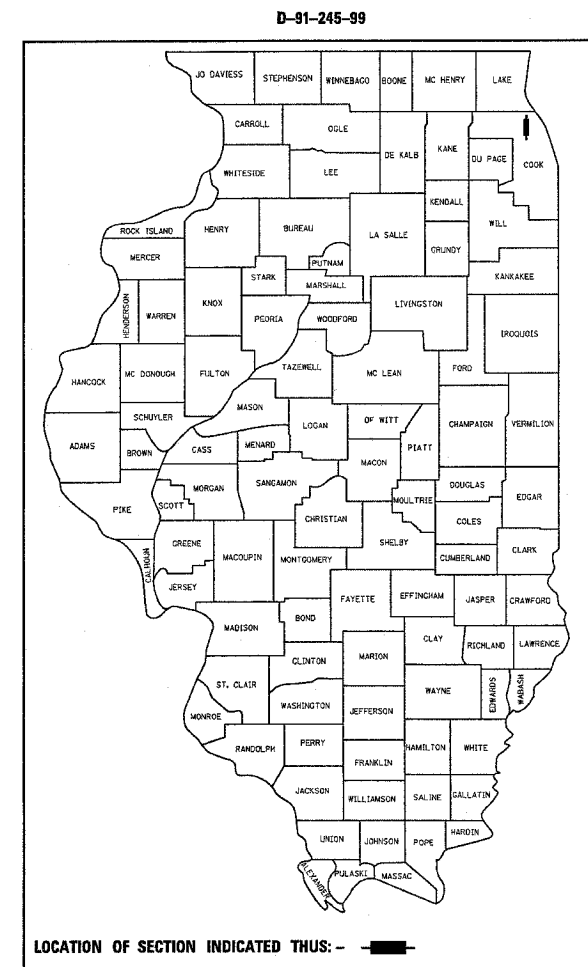
**PROPOSED  
HIGHWAY PLANS**

**FAU2760(SHERMER ROAD)  
SECTION 1316RS-1  
WILLOW ROAD TO OLD WILLOW ROAD  
COOK COUNTY  
C-91-245-99**

FOR INDEX OF SHEETS, SEE SHEET NO. 2

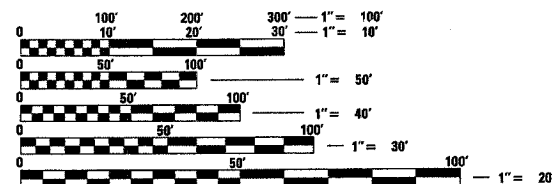
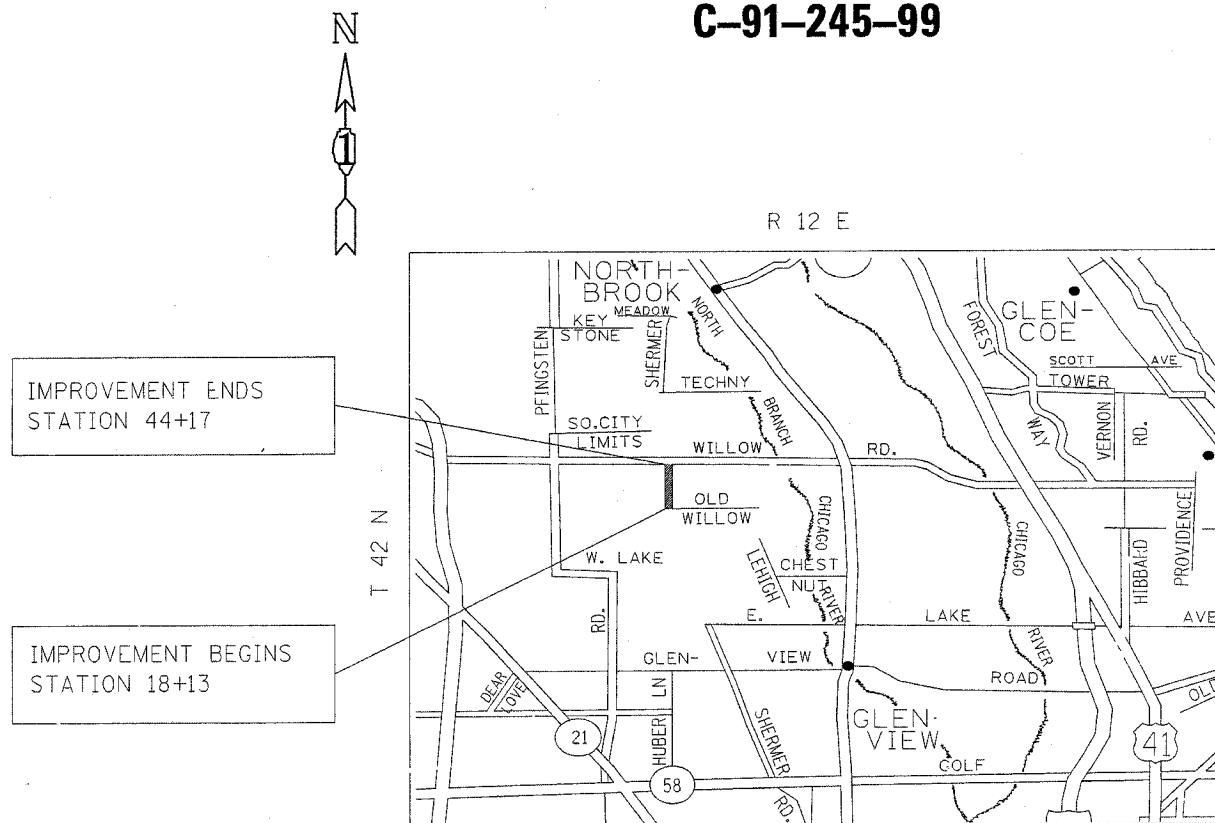
THE IMPROVEMENT IS LOCATED IN THE VILLAGE OF GLENVIEW IN COOK COUNTY

AVERAGE DAILY TRAFFIC = 14,600  
POSTED SPEED LIMIT = 35 MPH



LOCATION OF SECTION INDICATED THUS: - -  
NOTE: WHEREVER IN THESE PLANS OR 42 LS MENTIONED IT SHALL MEAN FAU 2760.

DISTRICT 1 DESIGN PLAN PREPARATION ENGINEER: KEN ENG /R. SHAH (847) 705-4437



FULL SIZE PLANS HAVE BEEN PREPARED USING STANDARD ENGINEERING SCALES. REDUCED SIZED PLANS WILL NOT CONFORM TO STANDARD SCALES. IN MAKING MEASUREMENTS ON REDUCED PLANS, THE ABOVE SCALES MAY BE USED.

J.U.L.I.E.  
JOINT UTILITY LOCATION INFORMATION FOR EXCAVATION  
1-800-892-0123

GROSS LENGTH OF IMPROVEMENT = 2,604 LINEAL FEET = 0.500 MILES  
NET LENGTH OF IMPROVEMENT = 2,604 LINEAL FEET = 0.500 MILES

CONTRACT NO. 60754

PRINTED BY THE AUTHORITY  
OF THE STATE OF ILLINOIS

Rev.

STATE OF ILLINOIS  
DEPARTMENT OF TRANSPORTATION  
DIVISION OF HIGHWAYS  
SUBMITTED March 21, 20 05  
Dina O'Keefe  
DEPUTY DIRECTOR OF HIGHWAYS, REGION ENGINEER  
May 13, 20 05  
Mike Nune  
ENGINEER OF DESIGN AND ENVIRONMENT  
May 13, 20 05  
Victor Modesto  
DIRECTOR OF HIGHWAYS, CHIEF ENGINEER