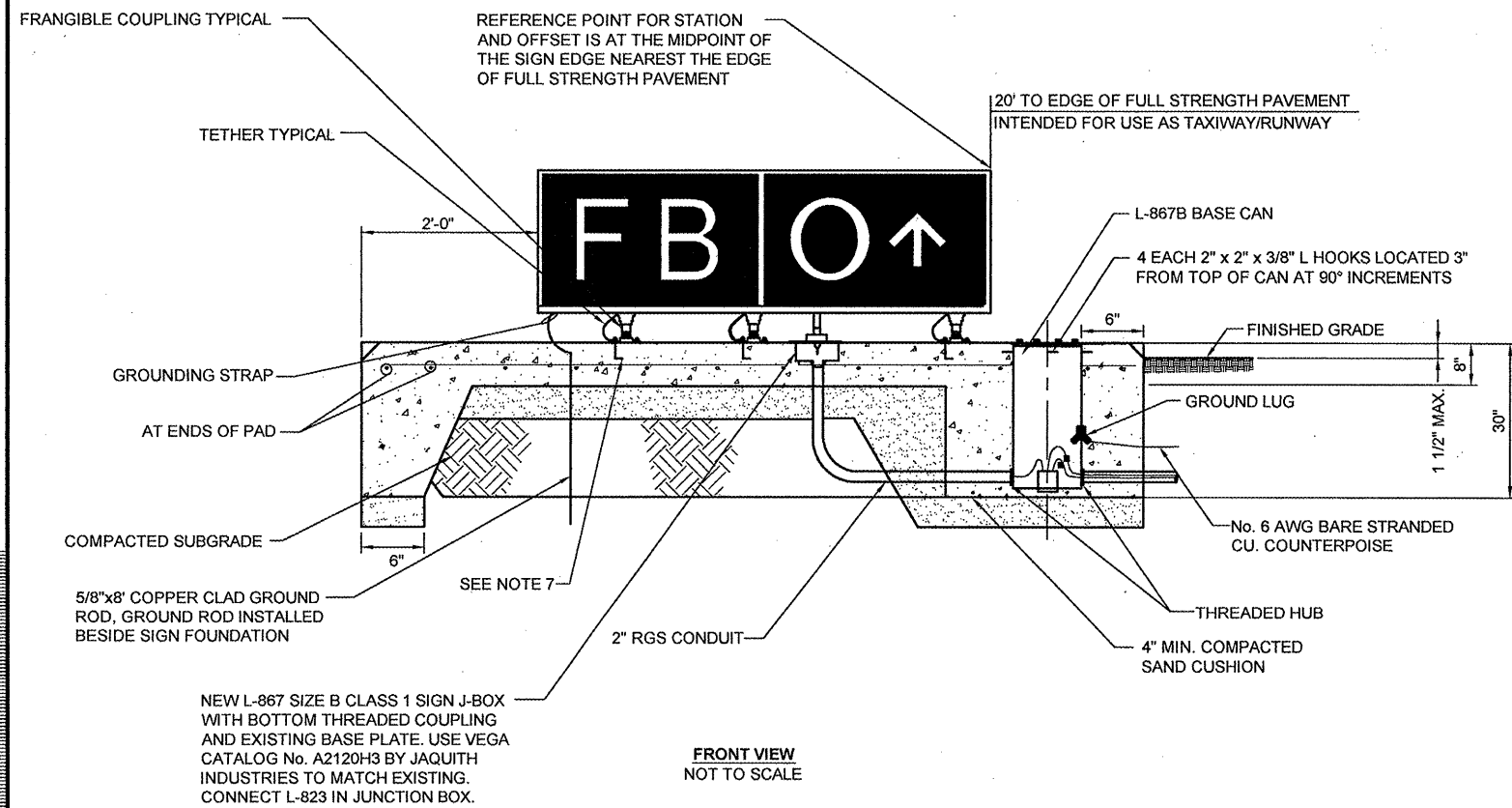


no.	date	by	ckd	description
0	04/25/08	BJQ	MAR	ISSUED FOR BID

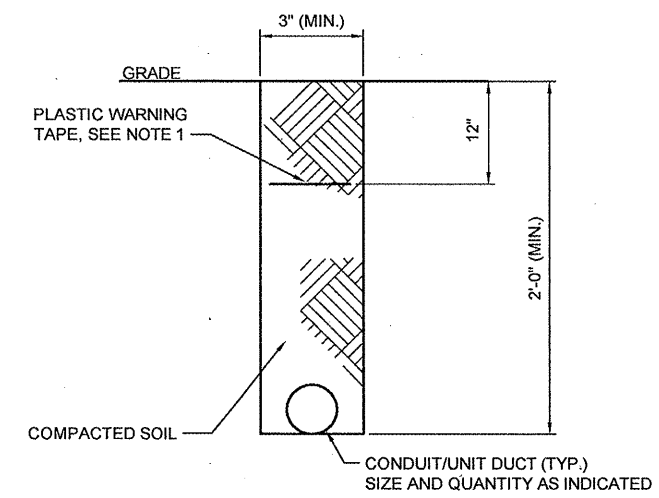


**FRONT VIEW**  
NOT TO SCALE

**TYPICAL TAXIWAY GUIDANCE SIGN**

**DETAIL** NOT TO SCALE

1	E101
	E102
	E103
	E104
	E105
	E106

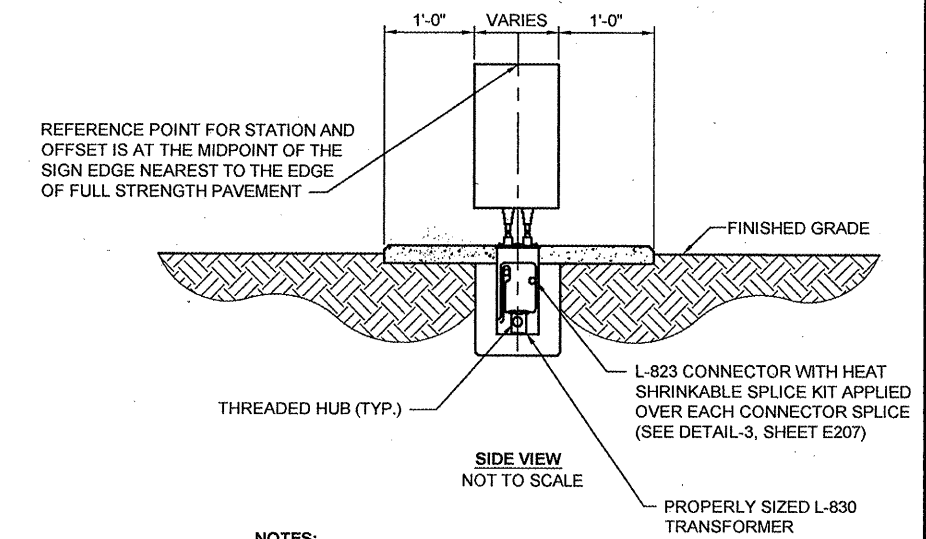


**TYPICAL CONDUIT/UNIT DUCT TRENCH**

**DETAIL** NOT TO SCALE

2	E102
	E201

**NOTE:**  
INSTALL A APPROVED DETECTABLE, MAGNETIC, 6" WIDE TAPE 12" BELOW FINISHED GRADE ABOVE ALL PORTIONS OF DUCTS. TAPE SHALL BE RED WITH "CAUTION BURIED ELECTRICAL LINE BELOW".



**NOTES:**

1. ALL NEW MATERIALS, BASE DETAILS ETC SHALL BE SUBMITTED TO THE ENGINEER FOR APPROVAL PRIOR TO INSTALLATION.
2. CONCRETE FOR SIGN BASE SHALL CONFORM TO SPECIFICATION AR610000.
3. REINFORCEMENT FOR SIGN BASE SHALL BE #4 TYPE ASTM GRADE 60. REINFORCEMENT SHALL HAVE A MINIMUM 2" COVER.
4. THE SIGN'S BOLTING PATTERN AND ANCHORING METHOD ETC SHALL BE PER CROUSE-HINDS RECOMENDATIONS AND MATCH EXISTING SIGNS.
5. ALL CONDUITS SHALL BE PVC 2" DIAMETER SCHEDULE 40 UNLESS OTHERWISE NOTED.
6. THE CONCRETE BASE SHALL EXTEND 2'-0" MINIMUM BEYOND EACH SIDE OF THE SIGN. THE EDGE OF THE CONCRETE BASE SHALL EXTEND 20' BEYOND THE CENTERLINE OF THE L-867B BASE CAN. CONCRETE BASE SHALL BE INSTALLED LEVEL.
7. CONTRACTOR SHALL PROVIDE NEW ANCHOR BOLTS AS RECOMMENDED BY THE SIGN MANUFACTURER (CROUSE-HINDS), BUT NO LESS THAN 4" LONG AND 1/2" DIAMETER.
8. CONTRACTOR SHALL INSTALL NEW L-830 ISOLATION TRANSFORMER AND WIRING.

NEW SIGNAGE SCHEDULE				
SIGN NO.	SIGN FACE	LEGEND	TYPE	LOCATION
1	SOUTH			
	NORTH	FB O →	Y	SEE ELECTRICAL SITE PLAN
2	SOUTH	FB O →	Y	SEE ELECTRICAL SITE PLAN
	NORTH			
3	EAST	FB O ↗	Y	SEE ELECTRICAL SITE PLAN
	WEST			
4	EAST	FB O ↑	Y	SEE ELECTRICAL SITE PLAN
	WEST			
5	EAST	FB O ↑	Y	SEE ELECTRICAL SITE PLAN
	WEST			
6	SOUTH			
	NORTH	FB O ↑	Y	SEE ELECTRICAL SITE PLAN
7	SOUTH			
	NORTH	FB O ↑	Y	SEE ELECTRICAL SITE PLAN
8	SOUTH			
	NORTH	FB O →	Y	SEE ELECTRICAL SITE PLAN

**SIGN TYPE DESCRIPTIONS**

- Y: L-858Y DIRECTION, DESTINATION AND BOUNDARY SIGN - BLACK LEGEND ON A YELLOW BACKGROUND
- R: L-858R MANDATORY INSTRUCTION SIGN - 3/4" BLACK OUTLINE ON OUTSIDE EDGE OF WHITE LEGEND ON RED BACKGROUND
- L: L-858L TAXIWAY AND RUNWAY LOCATION SIGN - YELLOW LEGEND AND BORDER ON A BLACK BACKGROUND



date	02/13/08	detailed	L. TUCKER
designed	B. QUINLAN	checked	A. RAHMAN

**RUNWAY 9/27 LIGHTING, NAVAIDS AND SIGNAGE; RUNWAY 18/36 WIND CONES AND SIGNAGE**

**ELECTRICAL DETAILS 6**

project	contract
drawing	rev.
<b>E206</b>	<b>0</b>
sheet 20 of 21	sheets
file 47463E206.dwg	