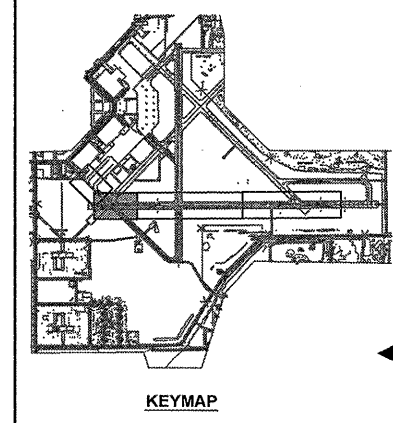


no.	date	by	ckd	description
0	04/25/08	BJQ	MAR	ISSUED FOR BID

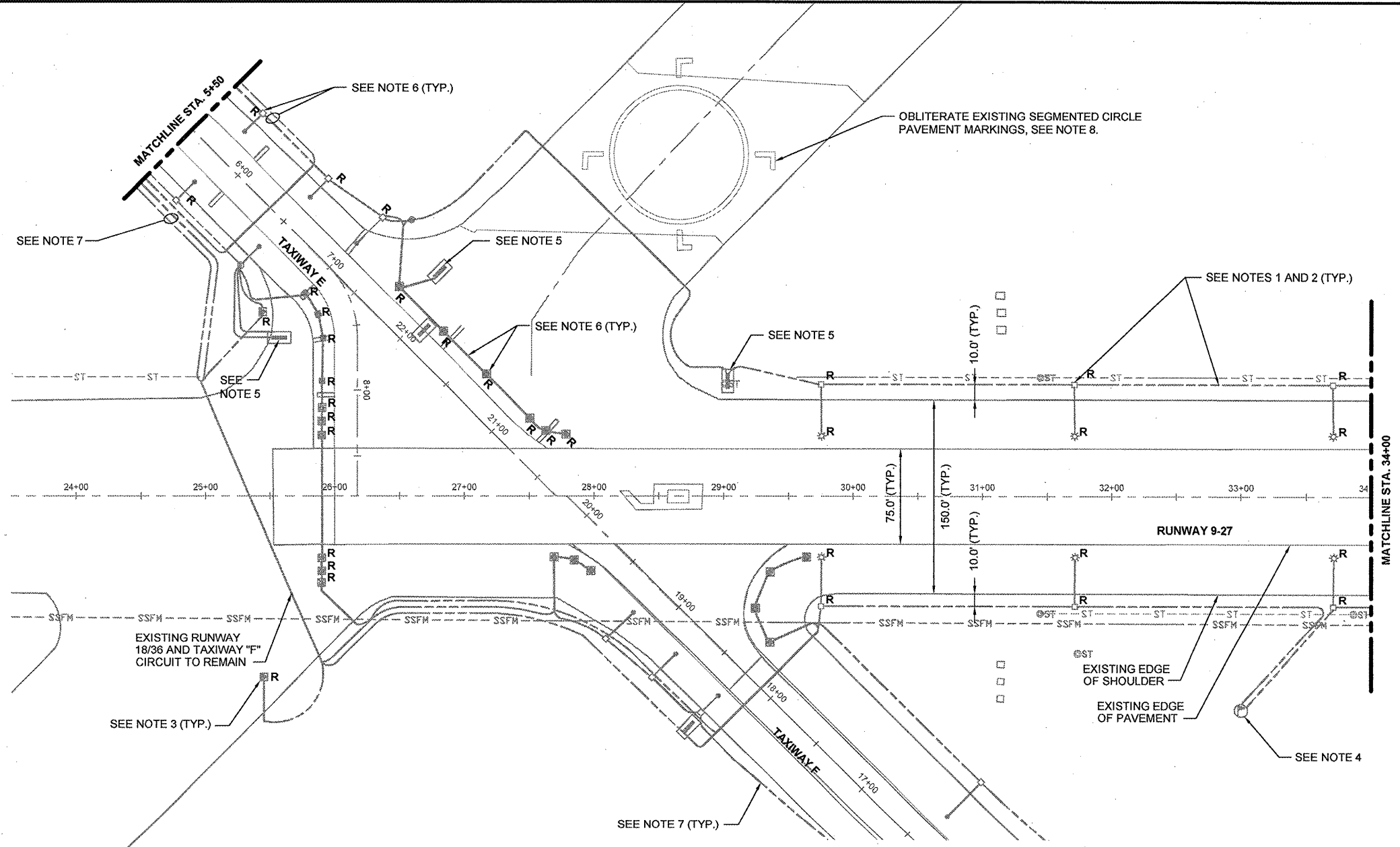


date	02/13/08	detailed	L. TUCKER
designed	B. QUINLAN	checked	A. RAHMAN

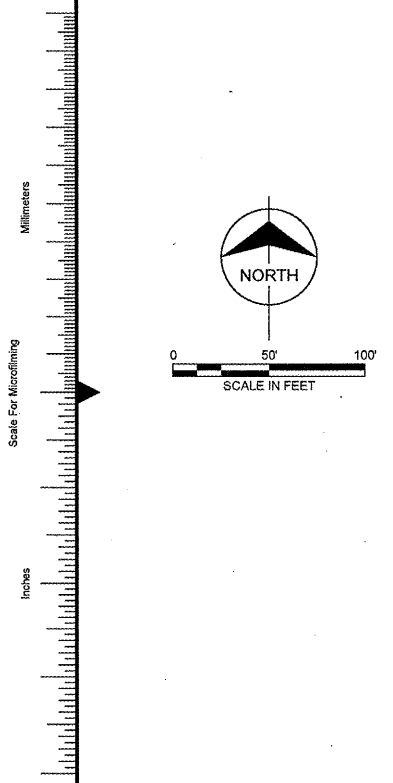
RUNWAY 9/27 LIGHTING, NAVAIDS AND SIGNAGE; RUNWAY 18/36 WIND CONES AND SIGNAGE

ELECTRICAL DEMOLITION PLAN
RUNWAY 9-27 STA. 23+50 TO STA. 34+00

project	contract
drawing	rev.
D102	0
sheet 6 of 21 sheets	file 47463D102.DWG



- NOTES:**
- ALL WIRING AND UNIT DUCT BEING DISCONNECTED OR DECOMMISSIONED UNDER THIS PROJECT SHALL BE REMOVED FROM ALL CONDUITS, DUCT BANKS, HANDHOLES OR MANHOLES. DIRECT BURIED WIRING AND ASSOCIATED UNIT DUCT SHALL ALSO BE REMOVED AND REPLACED WITH NEW WIRING IN UNIT DUCT.
 - RUNWAY 9/27 WIRING (IN UNIT DUCT), ISOLATION TRANSFORMERS, SPLICES, LIGHTS, BASE CANS, LIGHT STAKES, COUNTERPOISE AND SAFETY GROUND SYSTEM TO BE REMOVED AND REPLACED IN ITS ENTIRETY.
 - EXISTING REIL SYSTEM TO BE REMOVED. THIS SHALL INCLUDE MASTER REIL, SLAVE REIL, GROUNDING SYSTEM, 5KV WIRING, CONTROL WIRING AND CONCRETE BASES. AREA TO BE REGRADED OR REPAIRED TO MATCH SURROUNDING FINISHED GRADE.
 - EXISTING WIND CONE SOCK TO BE REMOVED AND REPLACED. EXISTING 5KV WIRING, POWER ADAPTOR AND BASE CAN TO BE DISCONNECTED AND REMOVED. EXISTING GROUND ROD TO REMAIN IN PLACE. OLD EQUIPMENT SHALL BE RETURNED TO THE OWNER UNLESS DIRECTED OTHERWISE.
 - EXISTING 5KV WIRING, ISOLATION TRANSFORMER AND SPLICES TO BE REMOVED AND REPLACED. EXISTING SIGN AND BASE TO REMAIN.
 - TAXIWAY "E" WIRING (IN UNIT DUCT), ISOLATION TRANSFORMERS AND SPLICES SHALL BE REPLACED. LIGHT FIXTURES, BASE CANS AND STAKES SHALL REMAIN AS-IS.
 - RUNWAY 18/36 AND TAXIWAY "F" CIRCUIT HOMERUN TO BE REMOVED AND REPLACED. SEE SHEETS E101 AND E102 FOR NEW WIRING LAYOUT.
 - HIGH PRESSURE WATER, SAND BLASTING OR COLD MILLING MAY BE USED. ANY METHODS USED SHALL NOT CAUSE MAJOR DAMAGE TO THE PAVEMENT OR ALTER THE PAVEMENT SURFACE BY MORE THAN 1/8". ALL WASTES SHALL BE DISPOSED OF OFF SITE.



COPYRIGHT © 2008 BURNS & MCDONNELL ENGINEERING COMPANY, INC.