



HANSON PROFESSIONAL SERVICES INC.

815 Commerce Drive, Suite 200  
Oak Brook, Illinois 60523  
Telephone: 630.990.3800  
Fax: 630.990.3801

Illinois Professional Design Firm  
Registration No. 184-001084

© Copyright Hanson Professional Service Inc. 2008



JOLIET REGIONAL PORT DISTRICT

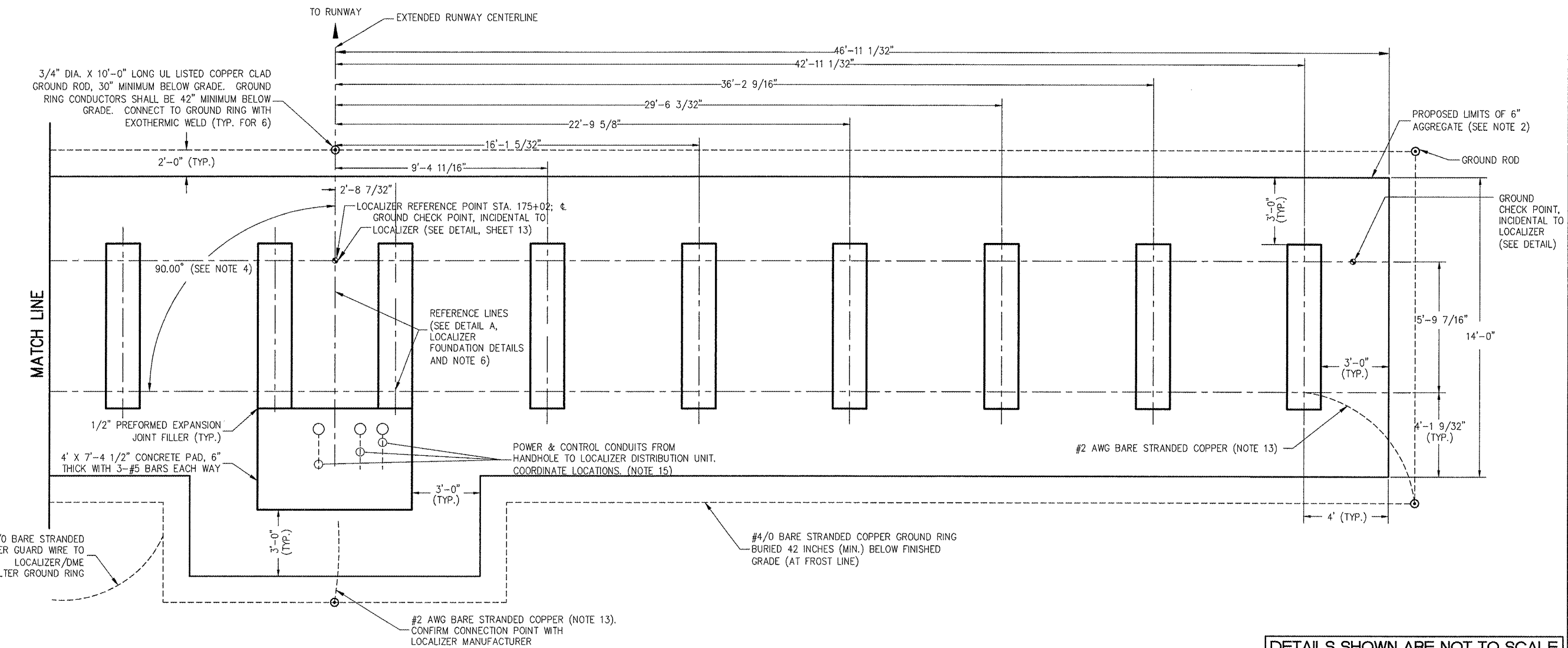
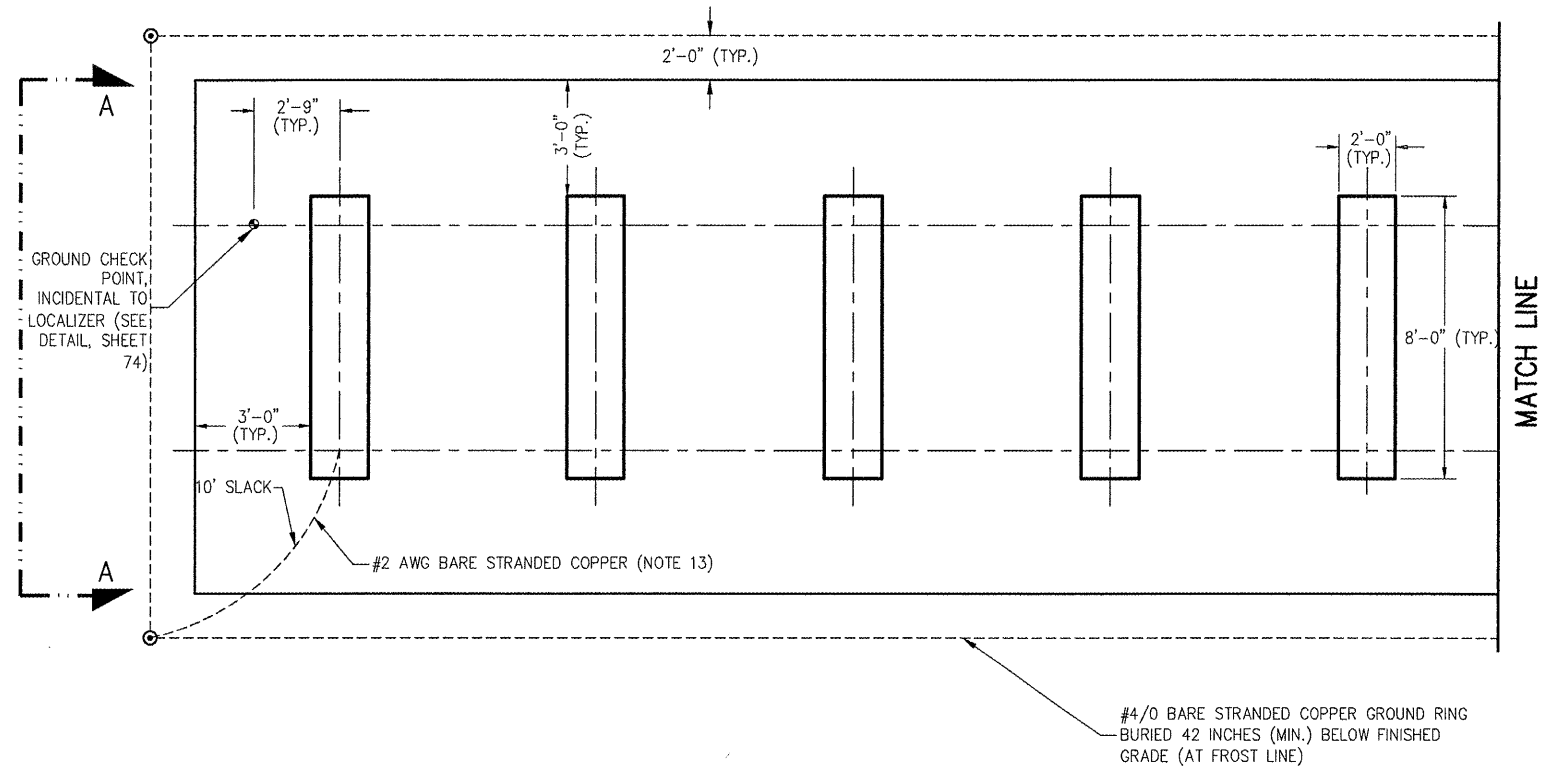
1 George Michas Drive  
Romeoville, Illinois 60446  
Telephone: 815.838.9497  
Fax: 815.838.9524

EXTEND RUNWAY 2-20: CONSTRUCT TAXIWAY TURNAROUND

AIP PROJECT NO. 3-17-0140-B42  
IDA PROJECT NO. LOT-3792

**NOTES:**

- CONCRETE SHALL BE ITEM 610 PC CONCRETE, AIR-ENTRAINED. FOR FOUNDATION DETAILS, SEE LOCALIZER ANTENNA FOUNDATION DETAIL SHEET.
- PLACE AGGREGATE TO DIMENSIONS SHOWN ON THIS SHEET. AGGREGATE TO BE IDOT GRADATION CA-6. AGGREGATE TO BE PLACED OVER VAPOR BARRIER, SEE SPECIAL PROVISIONS.
- ANTENNA ARRAY SHALL BE ALIGNED WITHIN +0.05' OF EXTENDED RUNWAY CENTERLINE.
- FOUNDATION ELEVATIONS TO BE 653.94. CONCRETE SHALL BE FINISHED AS SMOOTH AS POSSIBLE AND LEVEL WITHIN ± 1/4".
- REFERENCE LINES FOR LOCATING FOUNDATION ON SITE PLAN. CENTER OF ARRAY SHALL BE WITHIN +3" OF EXTENDED RUNWAY CENTERLINE. FOR SECTION A-A SEE LOCALIZER ANTENNA FOUNDATION DETAIL SHEET.
- FOUNDATION LAYOUT MAY BE ADJUSTED TO MEET EQUIPMENT MANUFACTURER'S SPECIFICATIONS.
- CONTRACTOR SHALL RELOCATE LOCALIZER ANTENNA AND PROVIDE CONCRETE, FOUNDATIONS, ALL WIRING AND CABLING AND GROUNDING NECESSARY FOR A COMPLETE INSTALLATION.
- WORK TO BE PAID UNDER ITEM AR127961 RELOCATE LOCALIZER PER LUMP SUM EXCEPT AS NOTED.
- COMPACTED STONE TO BE PAID SEPARATELY UNDER ITEM AR208606. VAPOR BARRIER TO BE PAID SEPARATELY UNDER ITEM AR800968.
- ANTENNA SHALL BE RELOCATED WITH OBSTRUCTION LIGHTS (L-810) IN ACCORDANCE WITH FAA ADVISORY CIRCULAR 70/7460-1, CURRENT ISSUE.
- LEAVE 10 FEET MIN. COILED LENGTH OF #2 AWG BARE STRANDED COPPER TO BE TERMINATED AT THE LOCALIZER ANTENNA ARRAY, PER MFR. REQUIREMENTS. CONFIRM MINIMUM REQUIRED SIZE OF GROUNDING ELECTRODE CONDUCTOR WITH LOCALIZER MANUFACTURER AND INCREASE WHERE APPLICABLE.
- ALL CONNECTIONS TO GROUND RODS AND THE GROUND RING SHALL BE EXOTHERMIC WELD TYPE CONNECTIONS.
- LEAVE OPENING AROUND CONDUITS TO ALLOW FIELD ADJUSTMENTS DURING DISTRIBUTION UNIT INSTALLATION.
- EQUIPMENT, MATERIALS, LAYOUT, ETC. SHOWN ON THIS DRAWING ARE BASED ON INFORMATION FROM A PARTICULAR MANUFACTURER AND FAA STD 019E. ACTUAL EQUIPMENT INSTALLATION AND LAYOUT MIGHT VARY ACCORDING TO MANUFACTURER AND MUST BE APPROVED BY THE ENGINEER.
- CONFIRM EQUIPMENT, MATERIALS, LAYOUT, ETC. WITH THE RESPECTIVE LOCALIZER MANUFACTURER.



DETAILS SHOWN ARE NOT TO SCALE

No.	Drawing Issue Description	Date	By

Date  
APRIL 18, 2008  
Sheet Title

LOCALIZER ANTENNA FOUNDATION PLAN

07A0166  
Project Number  
KNL 03/15/08  
Layout By Date  
KNL 03/15/08  
Designed By Date  
RMH 03/20/08  
Reviewed By Date  
LDH  
Drawn By Date

P:\07\0085\0084\07A0166\DRAWINGS\SHEETS\69-LOCALIZER FOUNDATION DETAILS.DWG APR 18 2008 10:20AM HAUSM0662