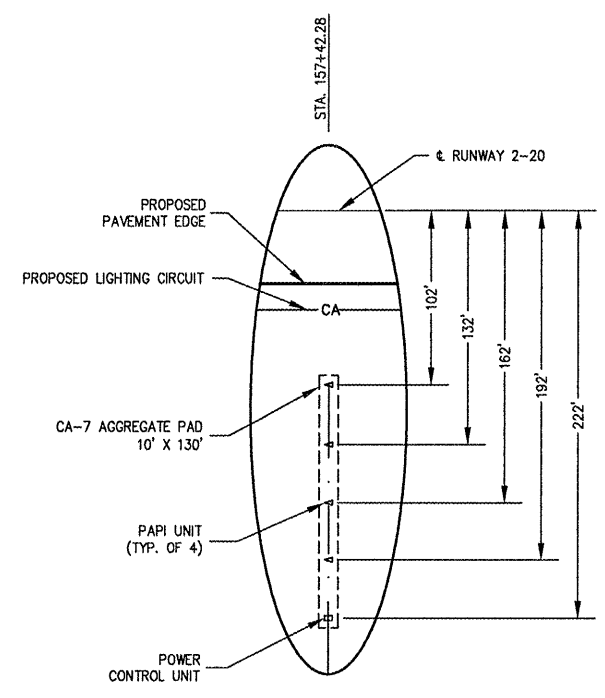


I: 107085 (08/06) 1070166 LORAINWOS(S) SHEETS 165-PAPI SITE PLANNING APR 18, 2008 10:20AM HANSON00662

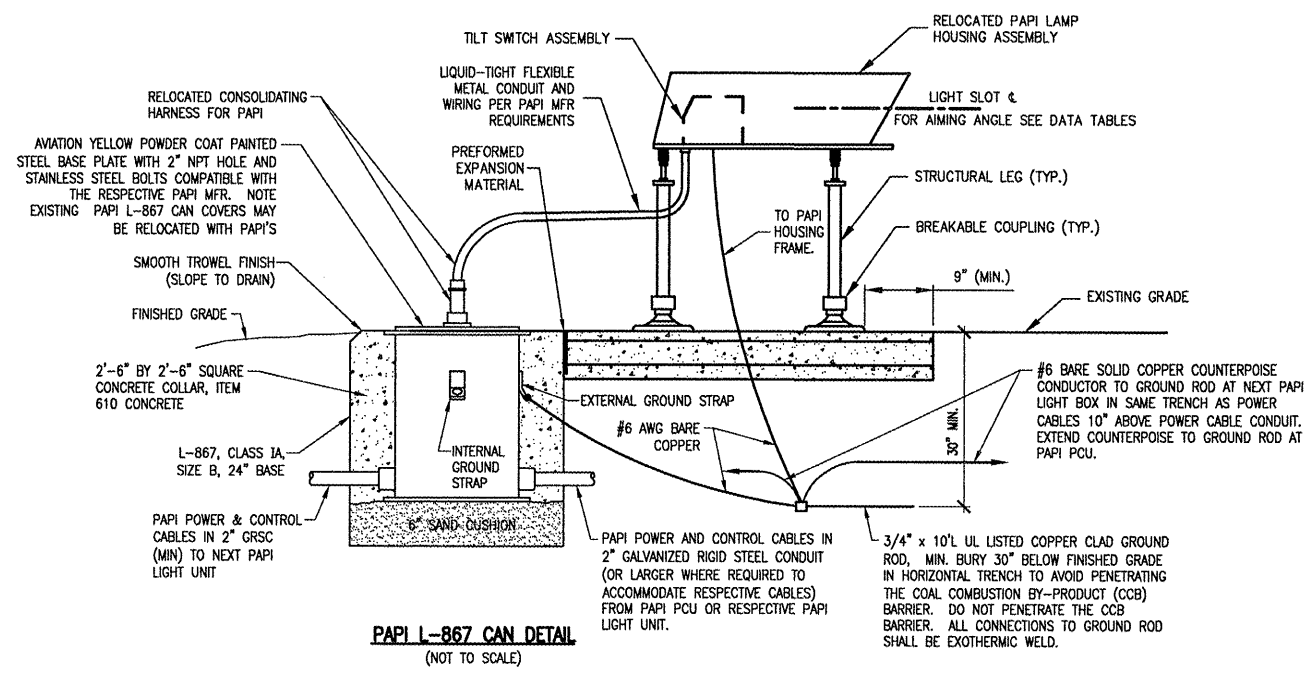


RUNWAY 20 PAPI SITE PLAN

RUNWAY 20 PAPI DATA TABLE				
	PAPI UNIT #1	PAPI UNIT #2	PAPI UNIT #3	PAPI UNIT #4
DISTANCE FROM RUNWAY [C (1)]	102.0'	132.0'	162.0'	192.0'
AIMING ANGLE	3° 30'	3° 10'	2° 50'	2° 30'
APPROXIMATE GROUND ELEVATION	661.4	660.8	660.2	659.8
PAPI UNIT APERTURE ELEVATION (2)	664.63	664.63	664.63	664.63

RUNWAY 20 - AS-BUILT ELEVATIONS		
LEG #	AS-BUILT TOP ELEV.	
1		
2		
3		
4		
5		
6		
7		
8		
9		
10		
11		
12		

- NOTES:**
- DIMENSIONS ARE TO THE CENTER OF EACH PAPI UNIT, MIDWAY BETWEEN THE FRONT LEGS.
 - APERTURE ELEVATIONS ARE TO THE LIGHT SLOT.
 - RUNWAY CENTERLINE ELEVATION PERPENDICULAR TO PAPI LOCATION = 663.94
 - THRESHOLD CROSSING HEIGHT 35.0'
 - CONTRACTOR TO COMPLETE ASBUILT ELEVATION TABLES AS PART OF PAPI INSTALLATION.



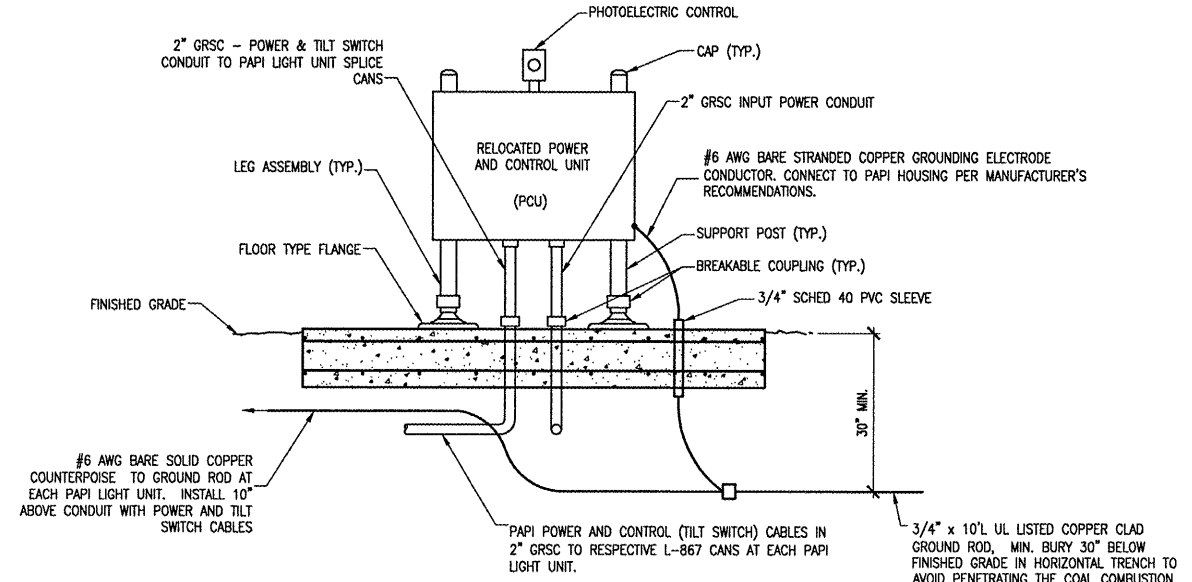
PAPI L-867 CAN DETAIL
(NOT TO SCALE)

NOTE:
FOR THE PURPOSE OF ENHANCING SAFETY, EACH BASE MUST HAVE INSTALLED, BY THE MANUFACTURER, AN INTERNAL AND EXTERNAL GROUND STRAP THAT IS AVAILABLE FOR THE PURPOSE OF ATTACHING A GROUND LUG THAT IS CONNECTED TO AN EARTH GROUND OR A SAFETY GROUND CONDUCTOR INSTALLED WITH THE RESPECTIVE CIRCUIT. FOR AIRPORT PROJECTS RECEIVING FEDERAL FUNDS THIS REQUIREMENT IS MANDATORY PER FAA AC 150/5345-42F.

TYPICAL EACH LIGHT BOX.
ACTUAL LAYOUT PER MANUFACTURER.
ALL ITEMS FURNISHED AND PAID UNDER ITEM AR125968 RELOCATE PAPI PER EACH.

PAPI - ELEVATION

NOTE:
INSTALL POWER AND TILT SWITCH WIRING IN 2" GRSC FROM PAPI PCU TO EACH L-867 BASE. POWER CABLES FROM PAPI PCU TO THE TWO CLOSEST PAPI LIGHT BOXES SHALL BE #6 AWG (MIN.) XLP-USE OR THWN. POWER CABLES FROM THE PAPI PCU TO THE TWO FURTHEST PAPI LIGHT BOXES SHALL BE #2 AWG (MIN.) XLP-USE OR THWN. TILT SWITCH WIRING SHALL BE #14 AWG (MIN.) XLP-USE OR THWN. ALL CONDUCTORS SHALL BE COPPER.



POWER CONTROL UNIT - ELEVATION
(NOT TO SCALE)

DETAILS SHOWN ARE NOT TO SCALE

LE039

HANSON

HANSON PROFESSIONAL SERVICES INC.
815 Commerce Drive, Suite 200
Oak Brook, Illinois 60523
Telephone: 630.990.3800
Fax: 630.990.3801

Illinois Professional Design Firm
Registration No. 184-001084

© Copyright Hanson Professional Service Inc. 2008

Chicago-Romeoville Airport

JOLIET REGIONAL PORT DISTRICT

1 George Michas Drive
Romeoville, Illinois 60446
Telephone: 815.838.9497
Fax: 815.838.9524

EXTEND RUNWAY 2-20; CONSTRUCT TAXIWAY TURNAROUND

AIP PROJECT NO. 3-17-0140-B42
IDA PROJECT NO. LOT-3792

No.	Additional Grades	03/07/03 DSY	Date	By
1	Additional Grades	03/07/03 DSY		

Date
APRIL 18, 2008
Sheet Title

PAPI SITE PLANS AND DETAILS

07A0166
Project Number
LDH 02/27/08
Layout By Date
LDH 02/27/08
Designed By Date
RMH 03/20/08
Reviewed By Date
TMM
Drawn By

65

Sheet No.