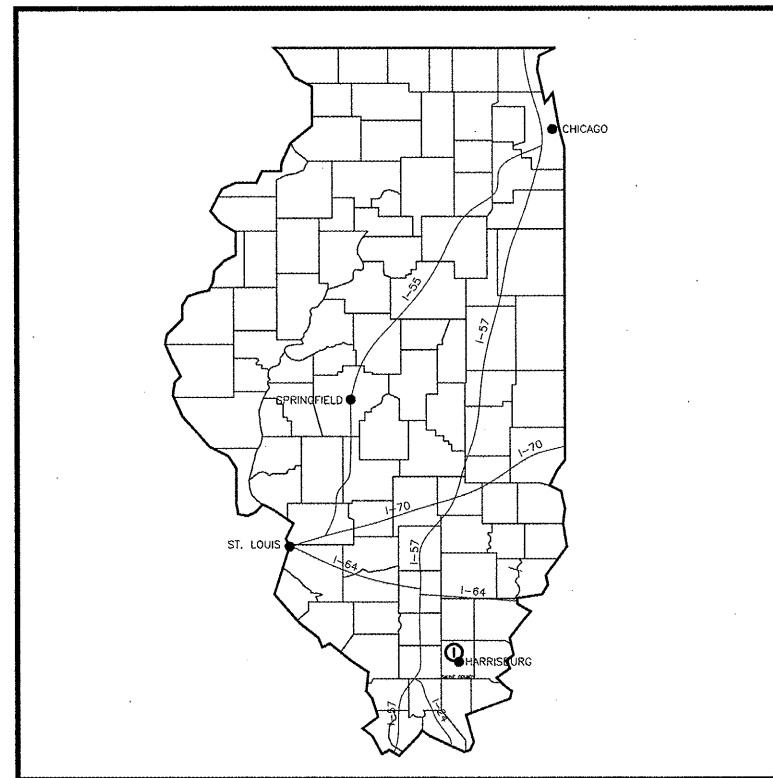


CONSTRUCTION PLANS

FOR

HARRISBURG RALEIGH AIRPORT

POROUS FRICTION COURSE OVERLAY ON RUNWAY 14/32

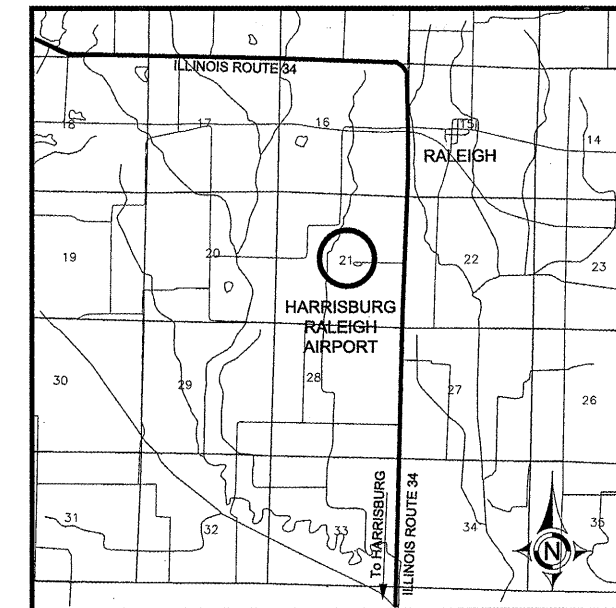


LOCATION MAP

ILLINOIS PROJECT NUMBER: HSB-3771
AIP PROJECT NUMBER: 3-17-0050-B12

HARRISBURG, ILLINOIS
SALINE COUNTY

DATE: MAY 9, 2008



VICINITY MAP

BROWN AND ROBERTS, INC.
CONSULTING ENGINEERS
PRESIDENT

SUBMITTED BY: *J.W. Brown*
JIM W. BROWN, AS PRESIDENT

DATE SUBMITTED: MAY 9, 2008

LICENSE NUMBER: 184-002518

LICENSE EXPIRATION DATE: APRIL 2009

PLANS PREPARED BY:

BROWN AND ROBERTS, INC.
1 WESTRIDGE ROAD
HARRISBURG, IL. 62946
(618) 252-8111

HARRISBURG RALEIGH AIRPORT AUTHORITY

CHAIRMAN

APPROVED BY: *Brad Henshaw* MAY 9, 2008
BRAD HENSHAW DATE

SECRETARY

ATTESTED BY: *Ken Wallace* MAY 9, 2008
KEN WALLACE DATE

SUMMARY OF QUANTITIES

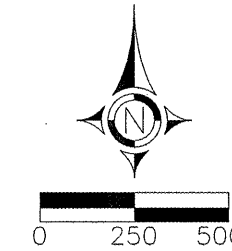
<u>ITEM NO.</u>	<u>DESCRIPTION</u>	<u>UNIT</u>	<u>QUANTITY</u>
AR152480	SHOULDER ADJUSTMENT	S.Y.	1,300
AR201661	CLEAN & SEAL BITUMINOUS CRACKS	L.F.	20,000
AR401610	BITUMINOUS SURFACE COURSE	TON	500
AR401650	BITUMINOUS PAVEMENT MILLING	S.Y.	1,500
AR402622	POROUS FRICTION COURSE, 0.10'	S.Y.	25,000
AR603510	BITUMINOUS TACK COAT	GAL	6,500
AR620520	PAVEMENT MARKING-WATERBORNE	S.F.	34,775
AR801251	ACCESS ROAD	L.S.	1
AR901510	SEEDING	ACRE	0.30
AR908510	MULCHING	ACRE	0.30

INDEX TO SHEETS

<u>SHEET NO.</u>	<u>DESCRIPTION</u>
1	COVER SHEET
2	SUMMARY OF QUANTITIES
3	RUNWAY SAFETY PLAN
4	EXISTING SITE & CONSTRUCTION PLAN
5	RUNWAY 14/32 PLAN VIEW
6	PAVEMENT MARKING DETAILS

HARRISBURG-RALEIGH AIRPORT
IL PROJECT NO. HSB-3771
AIP NO. 3-17-0050-B12
RUNWAY SAFETY PLAN
SHEET 3 OF 6

HA025



SCOPE OF WORK

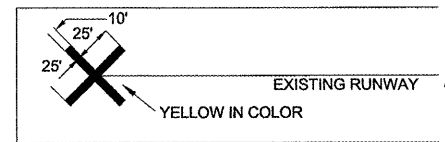
THE PROJECT SCOPE CONSISTS OF OVERLAYING THE EXISTING RUNWAY 14/32, NEW MARKINGS AND OTHER NECESSARY AND RELATED WORK.

PROPOSED SAFETY PLAN

GENERAL- THE HARRISBURG-RALEIGH AIRPORT AUTHORITY CURRENTLY HAS A PAVED RUNWAY 6-24 WHICH IS 5013 FT. x 75 FT. AND A PAVED RUNWAY 14-32 WHICH IS 2820 FT. x 75 FT.

AIRPORT SECURITY

AIRPORT SECURITY WILL BE MAINTAINED AT ALL TIMES. THE PROPOSED HAUL ROUTE SHOWN ON THIS SAFETY PLAN IS THE ONLY ACCESS CONTRACTOR EQUIPMENT AND PERSONNEL WILL BE ALLOWED TO USE. THE CONTRACTOR SHALL PROVIDE BARRICADES AT THIS ACCESS AND ENSURE THE BARRICADES ARE IN PLACE AT THE END OF EACH WORKING DAY.



DETAIL OF CROSS FOR CLOSED RUNWAY
 "NOT TO SCALE"

CONTRACTOR'S RESPONSIBILITIES

IDENTIFICATION- THE CONTRACTOR'S VEHICLES AND EQUIPMENT SHALL BE PROPERLY MARKED WITH 3-FOOT SQUARE INTERNATIONAL ORANGE AND WHITE CHECKERED FLAGS ANYTIME THEY ARE ON AIRPORT PROPERTY.

THE CONTRACTOR AND HIS EMPLOYEES SHALL BE RESTRICTED TO THE WORK AREA.

EQUIPMENT PARKING AND STORAGE- THE CONTRACTOR'S EQUIPMENT PARKING, STORAGE, AND EMPLOYEE PARKING WILL BE AT THE LOCATION SHOWN ON THIS SHEET. ONLY CONTRACTOR VEHICLES AND EQUIPMENT REQUIRED FOR CONSTRUCTION WILL BE ALLOWED OUTSIDE THIS AREA.

BARRICADES AND TRAFFIC CONES- IT WILL BE THE CONTRACTOR'S RESPONSIBILITY TO PLACE AND MAINTAIN BARRICADES AND TRAFFIC CONES AS REQUIRED AND AS DIRECTED BY THE RESIDENT ENGINEER. BARRICADES, THEIR MAINTENANCE, PLACEMENT, AND REMOVAL WILL BE CONSIDERED AS AN INCIDENTAL ITEM TO THE CONTRACT AND NO ADDITIONAL COMPENSATION WILL BE ALLOWED.

THE CONTRACTOR WILL NOT BE ALLOWED ON ANY AIRPORT PAVEMENT. THE CONTRACTOR WILL BE RESPONSIBLE FOR REPAIRING ANY DAMAGE TO EXISTING PAVEMENTS CAUSED BY HIS PERSONNEL OR EQUIPMENT.

HAUL ROUTE AND EQUIPMENT PARKING

THE CONTRACTOR WILL USE THE DESIGNATED HAUL ROUTE AND EQUIPMENT PARKING AREA SHOWN ON THIS SAFETY PLAN. THE PROPOSED EQUIPMENT PARKING AREA WILL BE APPROXIMATELY 100-FT BY 50-FT. THE CONTRACTOR WILL BE REQUIRED TO MAINTAIN THE PROPOSED HAUL ROUTE AND PARKING AREA THROUGHOUT THE COURSE OF THE PROJECT. AT THE CONCLUSION OF THE PROJECT, ALL AREAS DISTURBED WILL BE RESTORED AS NEEDED TO ITS ORIGINAL STATE. RESTORATION OF THE HAUL ROUTE AND EQUIPMENT PARKING AREA WILL BE CONSIDERED INCIDENTAL TO THE PROJECT AND NO ADDITIONAL COMPENSATION WILL BE ALLOWED.

UTILITY NOTE

THE CONTRACTOR IS RESPONSIBLE FOR CONTACTING ALL UTILITY COMPANIES AND ORGANIZATIONS THAT HAVE LINES OR CONDUITS IN THE PROPOSED WORK AREA. ALL LINES AND CONDUITS SHALL BE LOCATED AND IDENTIFIED FOR DEPTH BEFORE ANY EXCAVATION BEGINS. THE CONTRACTOR SHALL CALL JULIE (1-800-892-0123) TO ACCOMPLISH THESE REQUIREMENTS. THE CONTRACTOR IS RESPONSIBLE FOR IDENTIFYING ALL NON-JULIE UTILITIES LOCATED WITHIN THE PROPOSED CONSTRUCTION LIMITS. THESE UTILITIES ARE TO BE LOCATED PRIOR TO THE START OF CONSTRUCTION.

J.U.L.I.E. INFORMATION

COUNTY.....SALINE
 CITY.....HARRISBURG (5MI NORTH)
 TOWNSHIP.....RALEIGH
 SECTION NO.....21
 NEAREST MAJOR ROAD INTERSECTION...ILLINOIS RT. 34 & AIRPORT DRIVE
 AIRPORT ADDRESS...HARRISBURG-RALEIGH AIRPORT
 PO BOX 33
 HARRISBURG, IL 62946

NOTE:

THE COST OF CONSTRUCTING, PLACING, MAINTAINING, AND REMOVING CROSSES WILL BE CONSIDERED INCIDENTAL TO THE CONTRACT AND NO ADDITIONAL COMPENSATION WILL BE ALLOWED. THE CROSSES WILL BE YELLOW IN COLOR AND SHALL BE MADE OF A SUITABLE MATERIAL AS APPROVED BY THE RESIDENT ENGINEER. THE CROSSES WILL BE PLACED AT THE ENDS OF THE RUNWAY AND SECURED IN A MANNER APPROVED BY THE RESIDENT ENGINEER. THE PROPOSED CROSSES WILL BE PLACED WHEN THE RUNWAY IS CLOSED AND REMOVED WHEN THE RUNWAY IS RE-OPENED. THE CONTRACTOR WILL BE RESPONSIBLE FOR THE PLACEMENT AND REMOVAL OF THE CROSSES AT NO ADDITIONAL COST TO THE CONTRACT.

HEIGHT OF CONSTRUCTION EQUIPMENT

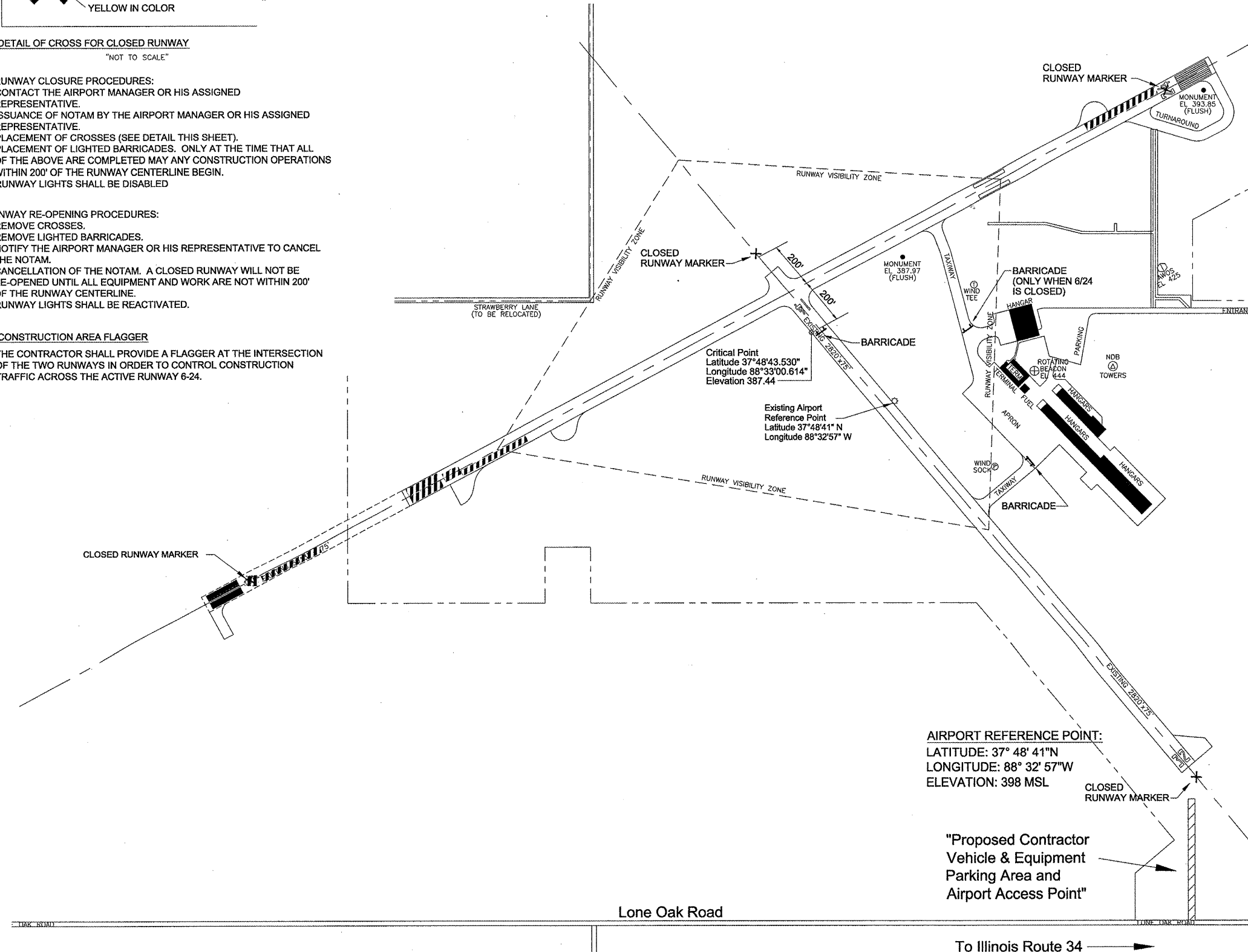
THE MAXIMUM ANTICIPATED HEIGHT OF THE CONSTRUCTION EQUIPMENT IS 20 FEET. THE TALLEST EQUIPMENT IS EXPECTED TO BE A SEMI-TRUCK WITH TRAILER IN THE UP POSITION.

- RUNWAY CLOSURE PROCEDURES:**
- CONTACT THE AIRPORT MANAGER OR HIS ASSIGNED REPRESENTATIVE.
 - ISSUANCE OF NOTAM BY THE AIRPORT MANAGER OR HIS ASSIGNED REPRESENTATIVE.
 - PLACEMENT OF CROSSES (SEE DETAIL THIS SHEET).
 - PLACEMENT OF LIGHTED BARRICADES. ONLY AT THE TIME THAT ALL OF THE ABOVE ARE COMPLETED MAY ANY CONSTRUCTION OPERATIONS WITHIN 200' OF THE RUNWAY CENTERLINE BEGIN.
 - RUNWAY LIGHTS SHALL BE DISABLED

- RUNWAY RE-OPENING PROCEDURES:**
- REMOVE CROSSES.
 - REMOVE LIGHTED BARRICADES.
 - NOTIFY THE AIRPORT MANAGER OR HIS REPRESENTATIVE TO CANCEL THE NOTAM.
 - CANCELLATION OF THE NOTAM. A CLOSED RUNWAY WILL NOT BE RE-OPENED UNTIL ALL EQUIPMENT AND WORK ARE NOT WITHIN 200' OF THE RUNWAY CENTERLINE.
 - RUNWAY LIGHTS SHALL BE REACTIVATED.

CONSTRUCTION AREA FLAGGER

THE CONTRACTOR SHALL PROVIDE A FLAGGER AT THE INTERSECTION OF THE TWO RUNWAYS IN ORDER TO CONTROL CONSTRUCTION TRAFFIC ACROSS THE ACTIVE RUNWAY 6-24.



AIRPORT REFERENCE POINT:
 LATITUDE: 37° 48' 41"N
 LONGITUDE: 88° 32' 57"W
 ELEVATION: 398 MSL

"Proposed Contractor Vehicle & Equipment Parking Area and Airport Access Point"

NOTES: 1. THE PROJECT SCOPE CONSISTS OF OVERLAYING THE EXISTING RUNWAY 14/32, NEW MARKINGS AND OTHER NECESSARY AND RELATED WORK.

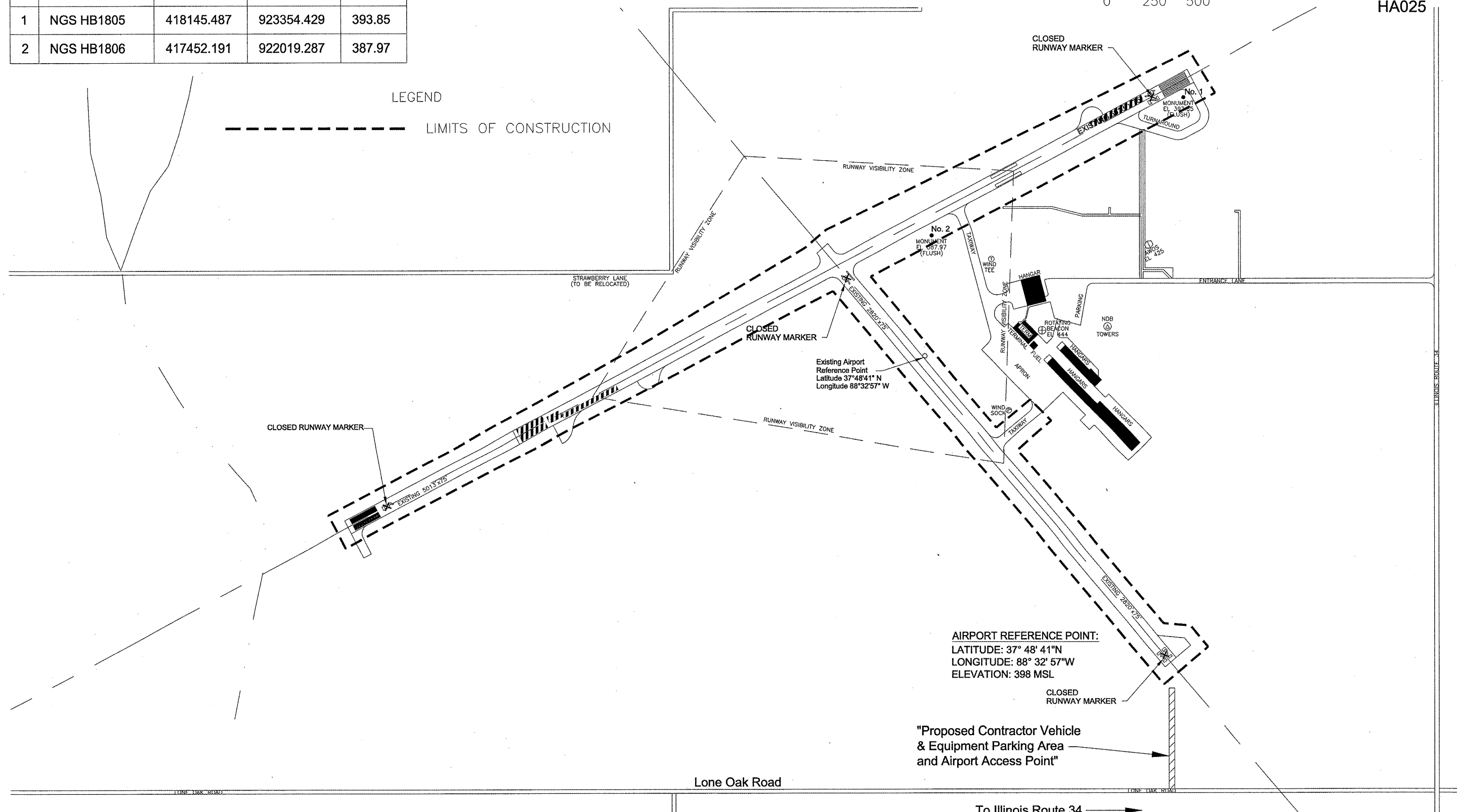
HARRISBURG-RALEIGH AIRPORT
 IL PROJECT NO. HSB-3771
 AIP NO. 3-17-0050-B12
 EXISTING SITE AND CONSTRUCTION PLAN
 SHEET 4 OF 6



COORDINATE DATA				
NO	DESCRIPTION	NORTHING	EASTING	ELEV.
1	NGS HB1805	418145.487	923354.429	393.85
2	NGS HB1806	417452.191	922019.287	387.97

LEGEND

--- LIMITS OF CONSTRUCTION



AIRPORT REFERENCE POINT:
 LATITUDE: 37° 48' 41"N
 LONGITUDE: 88° 32' 57"W
 ELEVATION: 398 MSL

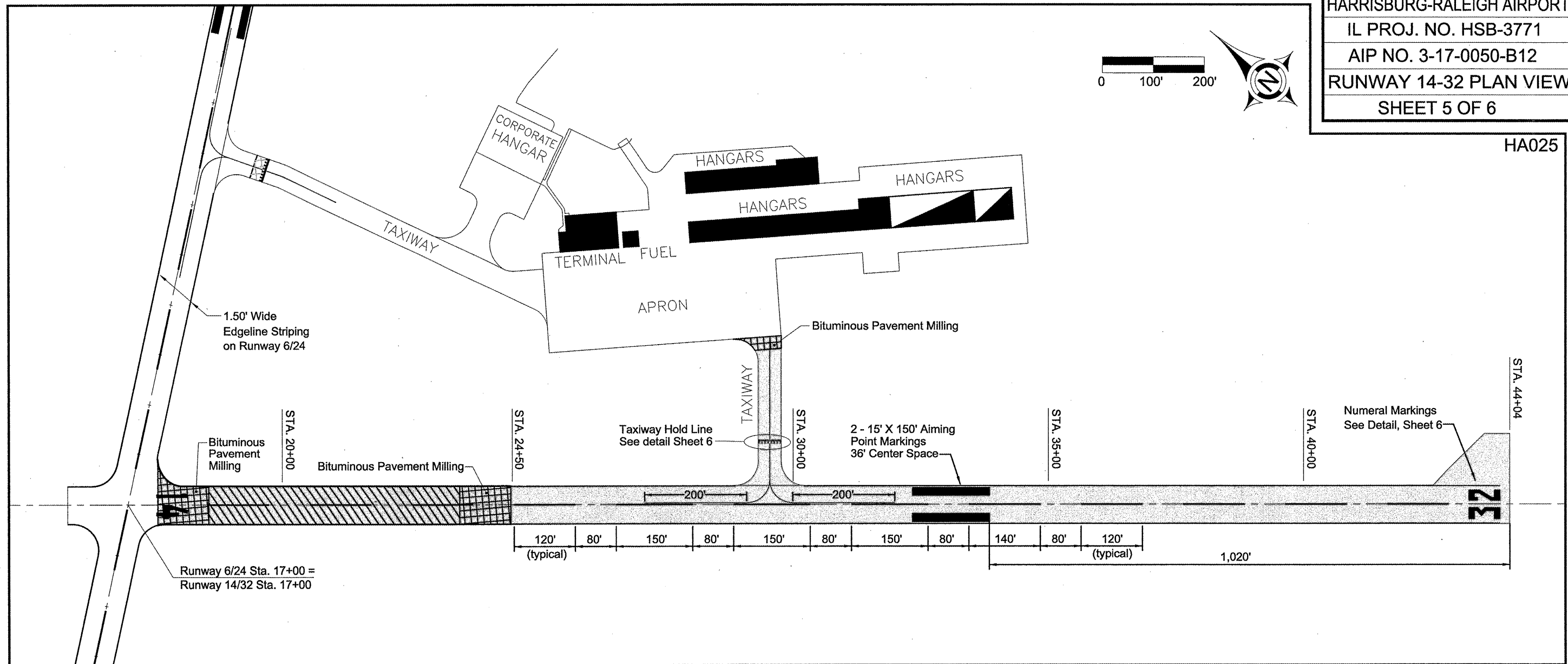
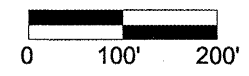
"Proposed Contractor Vehicle
 & Equipment Parking Area
 and Airport Access Point"

Lone Oak Road

To Illinois Route 34

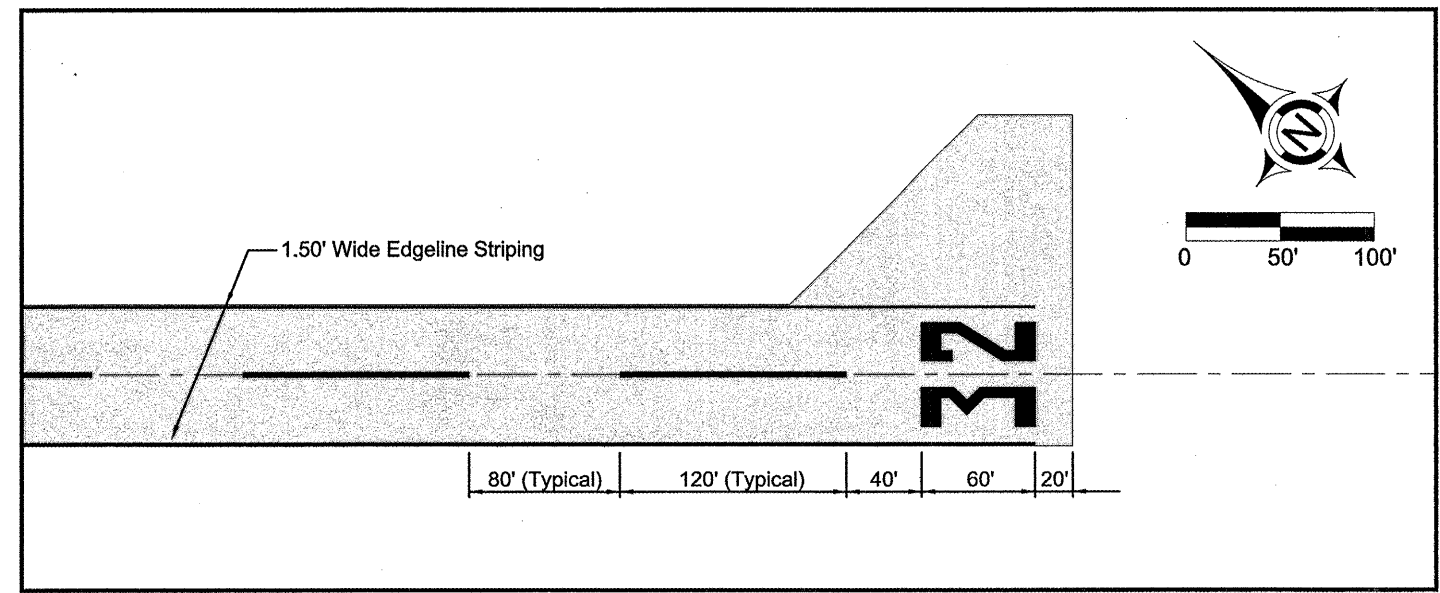
HA025

HA025



LEGEND

- PROPOSED BITUMINOUS TACK COAT AND POROUS FRICTION COURSE, 0.10'
- PROPOSED BITUMINOUS TACK COAT, BITUMINOUS SURFACE COURSE, BITUMINOUS TACK COAT, AND POROUS FRICTION COURSE, 0.10'
- PROPOSED BITUMINOUS PAVEMENT REMOVAL



22 May 2008 - 3:41pm X:\2007\07210\oc\plans\Plan view.dwg Layout Tab '14-32 Plan View'

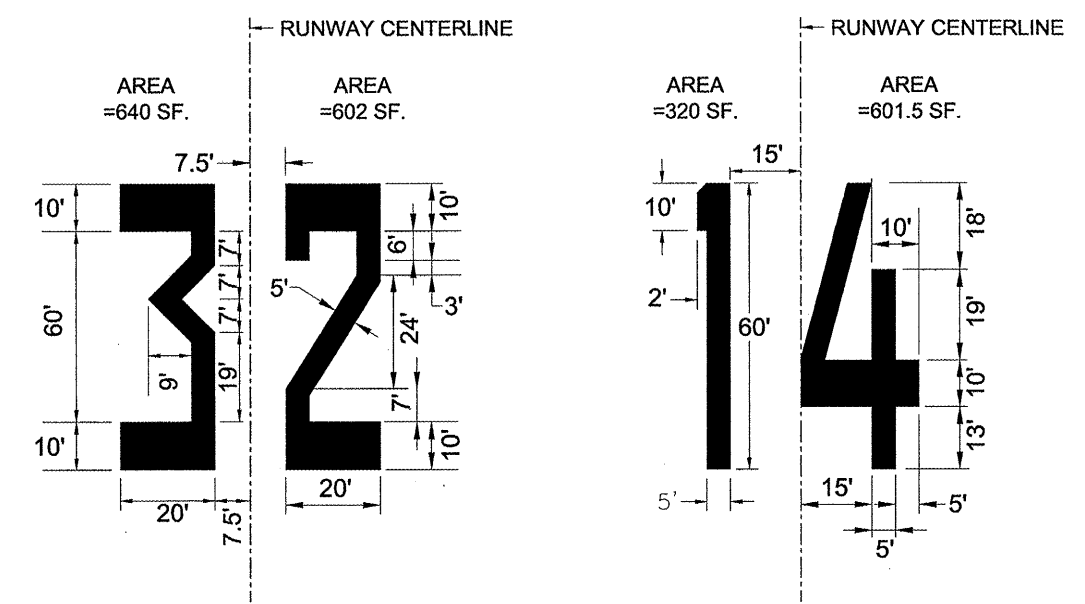
MARKING SCHEDULE

DESCRIPTION	UNIT AREA	NO. REQ'D	TOTAL
BLACK MARKINGS			
HOLD LINE TAXIWAY	360	1	360
TOTAL BLACK			360
WHITE MARKINGS			
NUMERAL 3	640	1	640
NUMERAL 2	652	1	652
NUMERAL 4	602	1	602
NUMERAL 1	320	1	320
CENTERLINE STRIPE 120' x 3'	360	8	2,880
CENTERLINE STRIPE 140' x 3'	420	1	420
CENTERLINE STRIPE 150' x 3'	450	3	1,350
15.00' x 150' STRIPE	2,250	2	4,500
EDGE LINE STRIPE RWY 14/32	7,590	1	7,590
EDGE LINE STRIPE RWY 6/24	14,500	1	14,500
TOTAL WHITE			33,454
YELLOW MARKINGS			
HOLD LINE TAXIWAY	144	1	144
TAXIWAY CENTERLINE	817	1	817
TOTAL YELLOW			961

TOTAL MARKING 34,775

HARRISBURG-RALEIGH AIRPORT
 IL PROJECT NO. HSB-3771
 AIP NO. 3-17-0050-B12
 MARKING AND TYPICAL DETAILS
 SHEET 6 OF 6

HA025



Note: Center the runway marking on the runway pavement centerline.

RUNWAY DESIGNATION MARKING DETAILS

