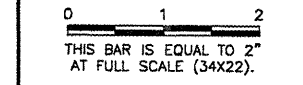


BL064

| REVISIONS | | |
|-----------|----|------|
| NUMBER | BY | DATE |
| | | |
| | | |
| | | |

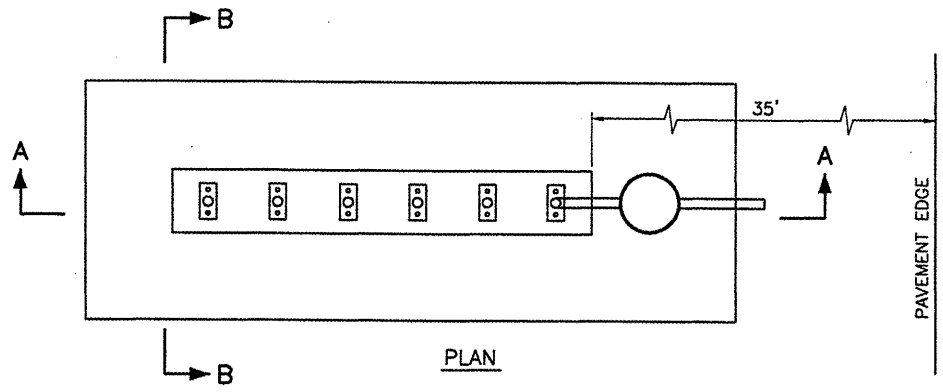


BLOOMINGTON-NORMAL AIRPORT AUTHORITY
 CENTRAL ILLINOIS REGIONAL AIRPORT
 BLOOMINGTON, ILLINOIS

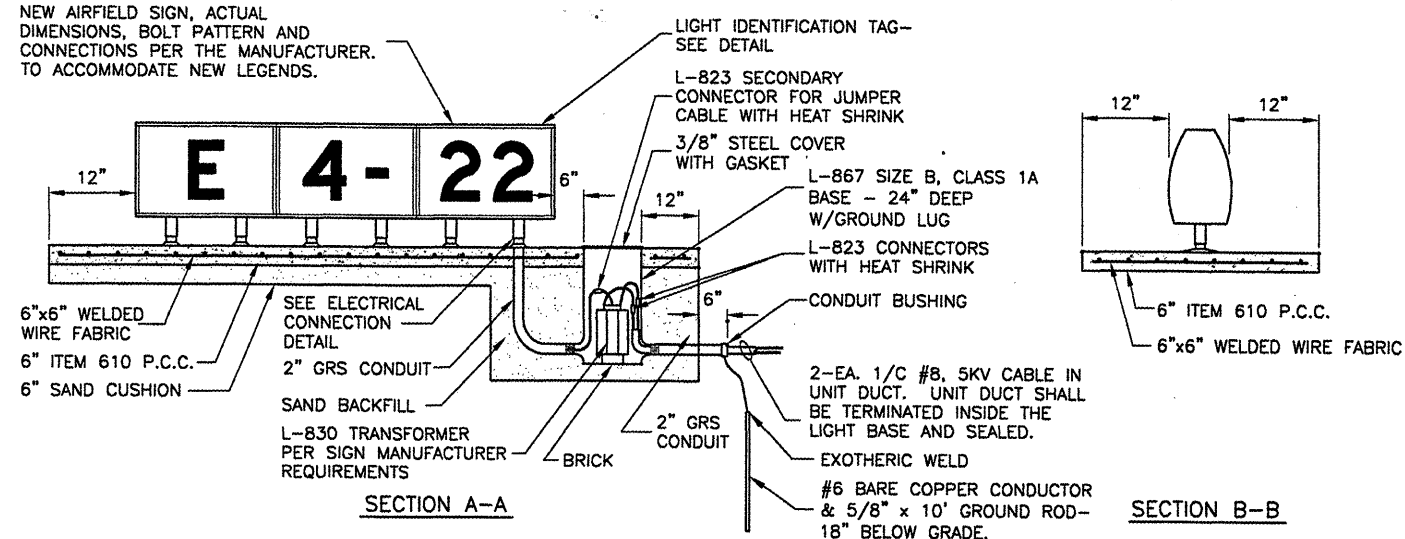
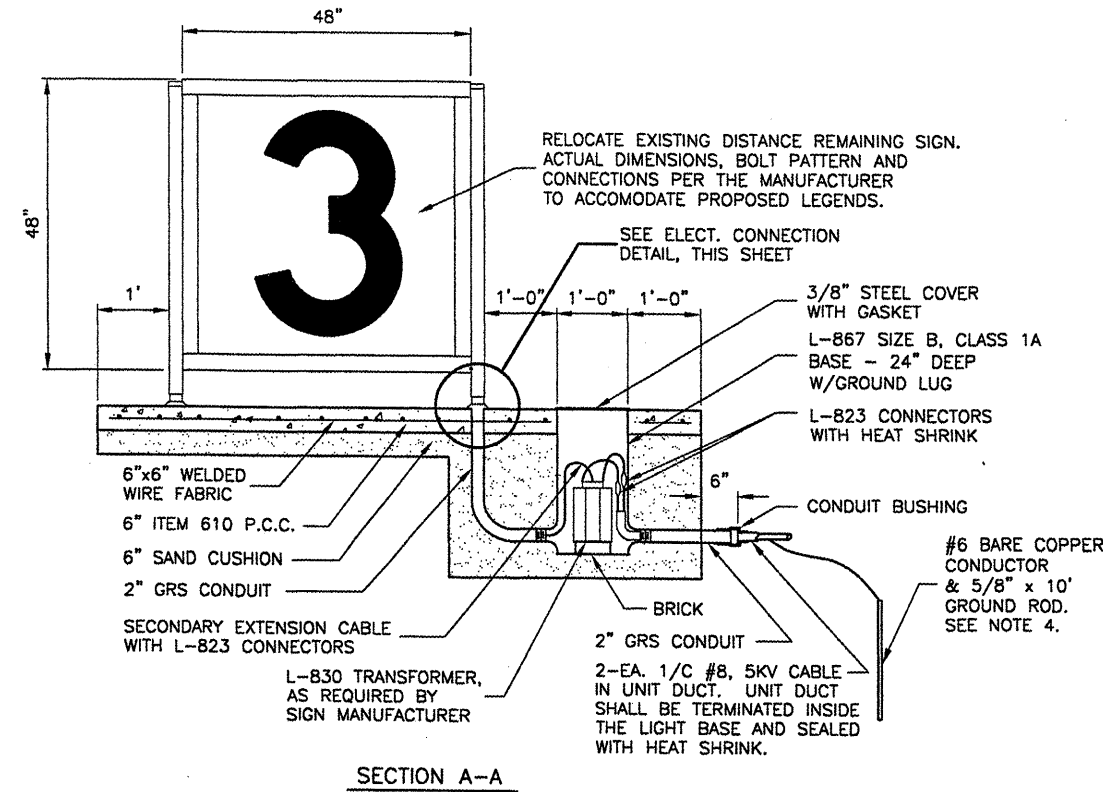
CONSTRUCT NEW ARFF FACILITY
 AIRFIELD SIGNAGE DETAILS

© copyright CMT, Inc.
CMT
 CRAWFORD, MURPHY & TILLY, INC.
 CONSULTING ENGINEERS
 License No. 184-000513

| | |
|---------------|-------------------|
| DESIGN BY: | KLB |
| DRAWN BY: | DPA |
| CHECKED BY: | REW |
| APPROVED BY: | REW |
| DATE: | 04/01/2008 |
| JOB No: | 0508509 |
| IL PROJ. NO. | BMI-3797 |
| AIP PROJ. NO. | 3-17-0006-46 & 48 |
| SHEET | 47 OF 66 SHEETS |

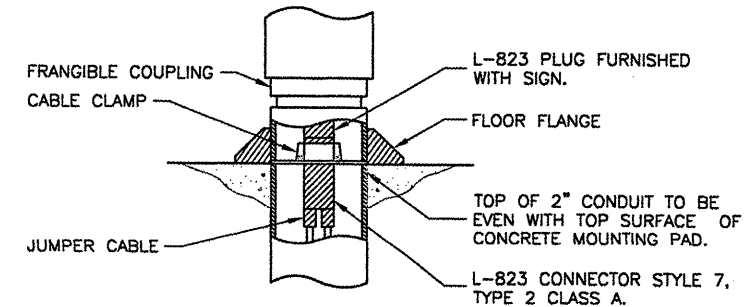


- AIRFIELD SIGNAGE NOTES**
- SIGN SCHEDULE IS SUBJECT TO FAA APPROVAL OF THE SIGNAGE PLAN.
 - CHANGES TO NEW LEGENDS MAY OCCUR SUBJECT TO 1 ABOVE.
 - CONTRACTOR SHALL SUBMIT SHOP DRAWINGS WITH NEW LEGENDS FOR APPROVAL PRIOR TO STARTING MANUFACTURE.
 - EXISTING SIGNS ARE LUMACURVE.

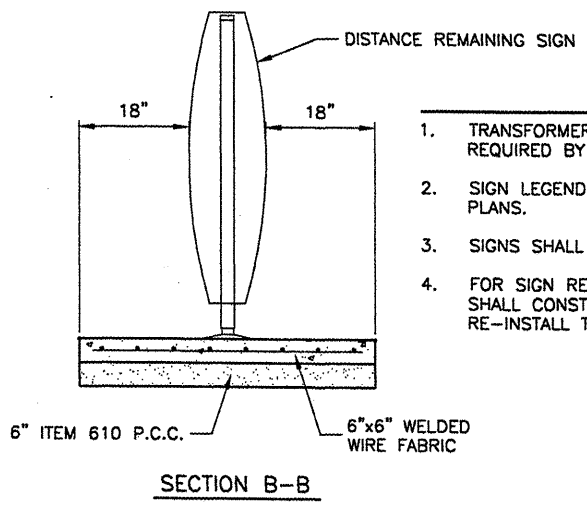


- NOTES**
- TRANSFORMER WATTAGE SHALL BE AS REQUIRED BY SIGN MANUFACTURER.
 - SIGN LEGEND SHALL BE AS SHOWN IN THE PLANS.
 - SIGNS SHALL BE SIZE 2, STYLE 2 OR 3, CLASS 2.

NEW L-858 AIRFIELD SIGN DETAILS
 N.T.S.

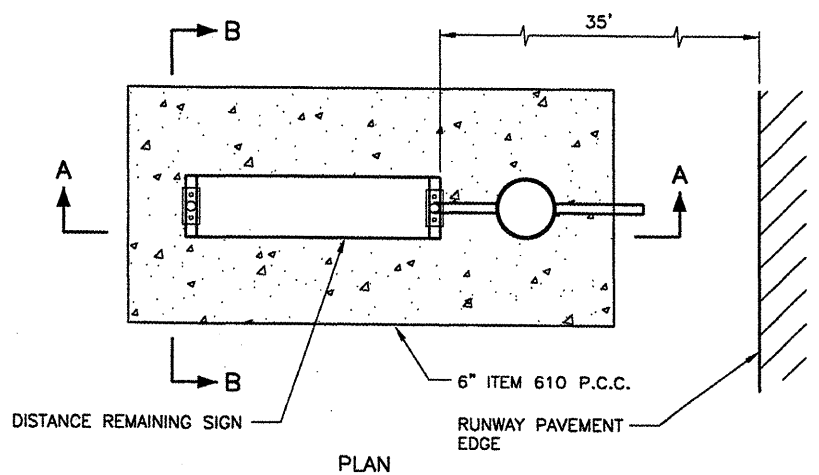


ELECTRICAL CONNECTION DETAIL
 N.T.S.



- NOTES**
- TRANSFORMER WATTAGE SHALL BE AS REQUIRED BY THE SIGN MANUFACTURER.
 - SIGN LEGEND SHALL BE AS SHOWN IN THE PLANS.
 - SIGNS SHALL BE SIZE 4, STYLE 3 CLASS 2.
 - FOR SIGN RELOCATIONS, THE CONTRACTOR SHALL CONSTRUCT A NEW BASE AND RE-INSTALL THE SIGN AND TRANSFORMER.

SECTION B-B



RELOCATED RUNWAY DISTANCE REMAINING SIGN DETAILS
 N.T.S.