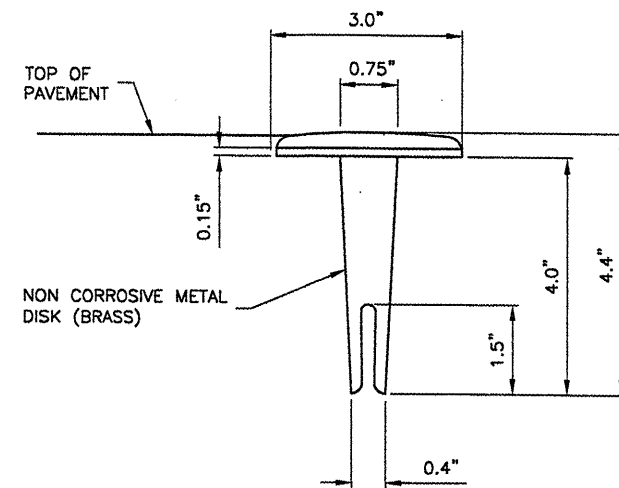


TYPE, NUMBER OF
DUCTS AND DUCT SIZE
STAMPED ON MARKER

PLAN

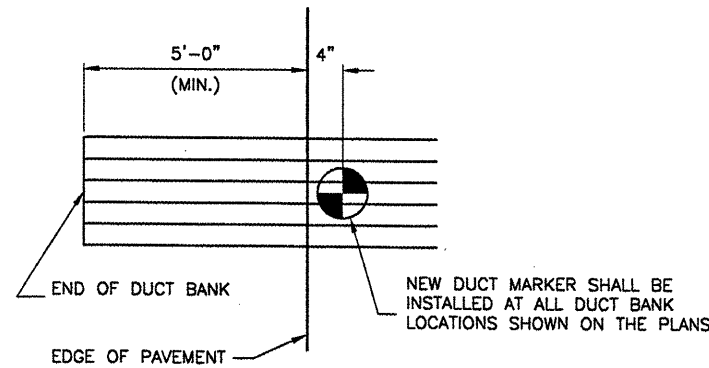


NON CORROSIVE METAL
DISK (BRASS)

SECTION

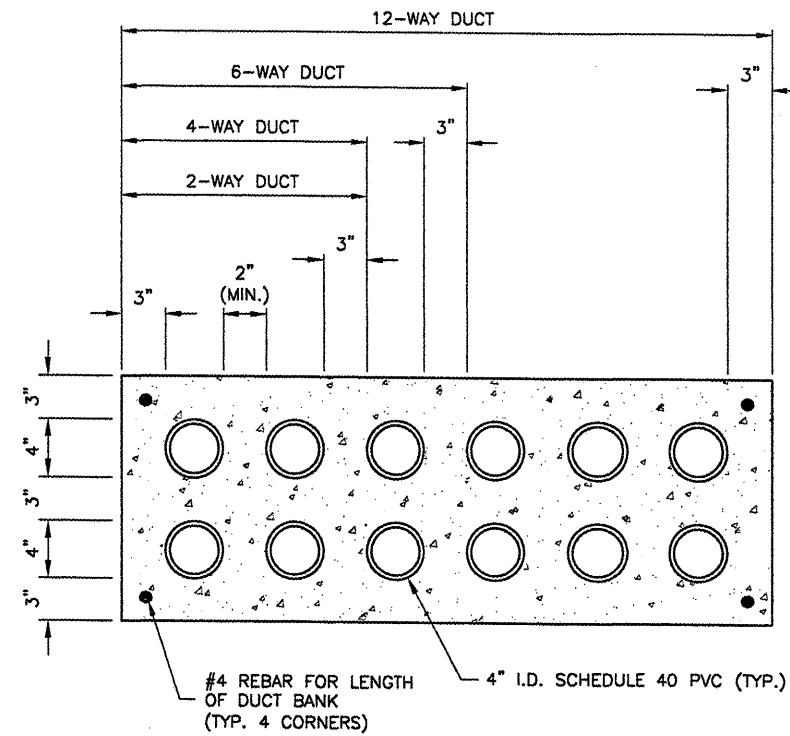
DUCT MARKER DETAILS

N.T.S.



DUCT MARKERS SHALL BE RECESSED
AND GROUTED INTO THE PAVEMENTS.

MARKER PLACEMENT

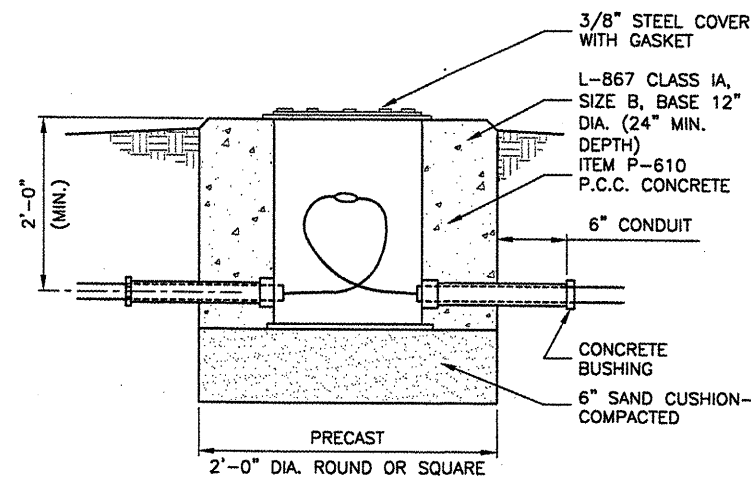


DUCT BANK DETAIL

N.T.S.

NOTES

1. DIMENSIONS SHOWN ARE MINIMUM.
2. TOP OF CONCRETE ENCASEMENT TO BE NOT LESS THAN 18" BELOW FINISHED SUBGRADE.
3. DUCT CONCRETE SHALL BE ITEM 610 STRUCTURAL P.C.C. CONCRETE.
4. ALL DUCT SHALL BE 4" INSIDE DIAMETER.
5. LOCATIONS SHOWN ARE APPROXIMATE. DUCT BANKS SHALL BE INSTALLED AT LOCATIONS DESIGNATED BY THE ENGINEER.
6. CONTRACTOR SHALL INSTALL DUCT BANKS AT A DEPTH WHICH WILL NOT CONFLICT WITH ELEVATION SENSITIVE UTILITIES.
7. A PULL WIRE SHALL BE PROVIDED IN EACH UNUSED CONDUIT. UNUSED DUCT SHALL BE SEALED WITH PVC PLUGS/CAPS TO THE SATISFACTION OF THE ENGINEER.
8. DUCT BANKS SHALL EXTEND A MINIMUM OF 5' BEYOND THE NEW EDGE OF PAVEMENT.



SPLICE CAN DETAIL

N.T.S.

BL064

REVISIONS

NUMBER	BY	DATE

0 1 2
THIS BAR IS EQUAL TO 2"
AT FULL SCALE (34X22).

BLOOMINGTON-NORMAL AIRPORT AUTHORITY
CENTRAL ILLINOIS REGIONAL AIRPORT
BLOOMINGTON, ILLINOIS

CONSTRUCT NEW ARFF FACILITY
ELECTRICAL DETAILS 2

© Copyright CMT, Inc.



CRAWFORD, MURPHY & TILLY, INC.
CONSULTING ENGINEERS
License No. 184-000653

DESIGN BY:	KLB
DRAWN BY:	DPA
CHECKED BY:	REW
APPROVED BY:	REW
DATE:	04/01/2008
JOB No:	0508509
IL PROJ. NO.	BMI-3797
AIP PROJ. NO.	3-17-0006-46 & 48
SHEET	46 OF 66 SHEETS