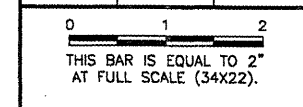


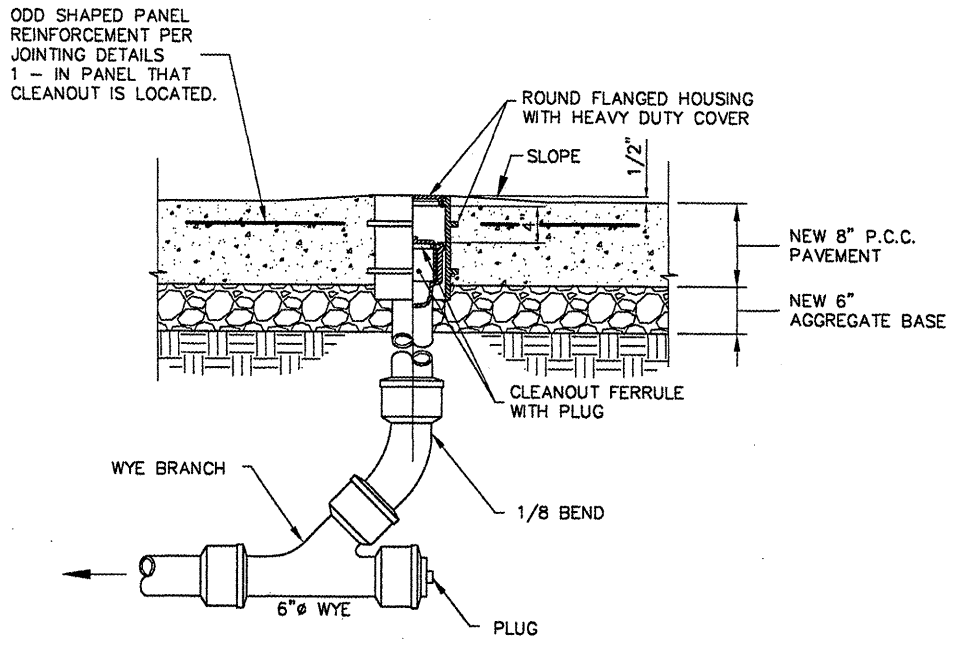
REVISIONS		
NUMBER	BY	DATE



BLOOMINGTON-NORMAL AIRPORT AUTHORITY
 CENTRAL ILLINOIS REGIONAL AIRPORT
 BLOOMINGTON, ILLINOIS
 CONSTRUCT NEW ARFF FACILITY
 SANITARY SEWER DETAILS

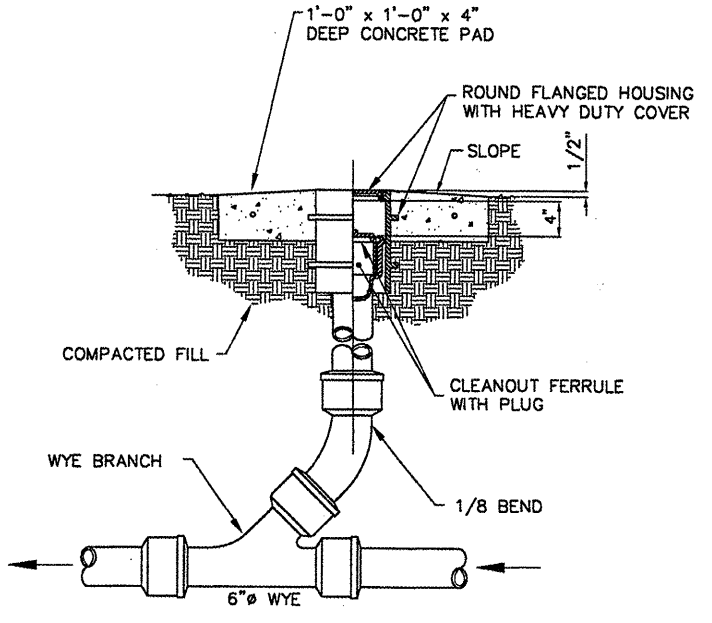
© copyright CMT, Inc.
CMT
 CRAWFORD, MURPHY & TILLY, INC.
 CONSULTING ENGINEERS
 License No. 184-000813

DESIGN BY:	RLV/WHP
DRAWN BY:	DPA
CHECKED BY:	RLW
APPROVED BY:	RLW
DATE:	04/01/2008
JOB No:	0508509
IL PROJ. NO.	BMI-3797
AIP PROJ. NO.	3-17-0006-46 & 48
SHEET	41 OF 66 SHEETS

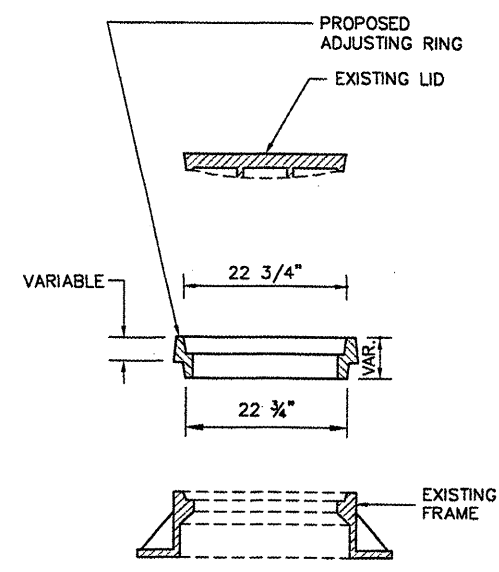


CLEANOUT DETAIL (A)
 N.T.S.
 (TO BE USED IN A CHANGE OF ALIGNMENT)

- NOTES:**
- CLEANOUTS SHALL BE INCIDENTAL TO THE SANITARY SEWER INSTALLATION.
 - SEE WATERMAIN DETAILS SHEET FOR SANITARY SEWER PIPE INSTALLATION DETAIL.

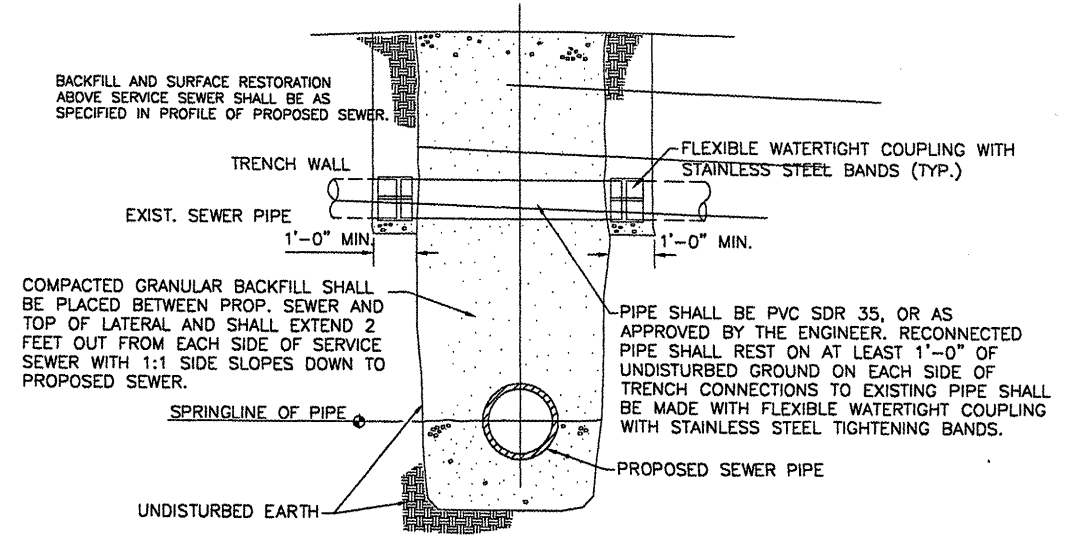


CLEANOUT DETAIL (B)
 N.T.S.
 (TO BE USED IN A CHANGE OF ALIGNMENT)

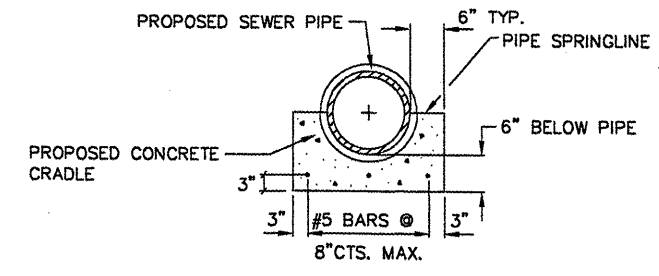


NOTE:
 ACTUAL FRAME DIMENSIONS AND "M" SHALL BE VERIFIED PRIOR TO ORDERING CASTINGS.

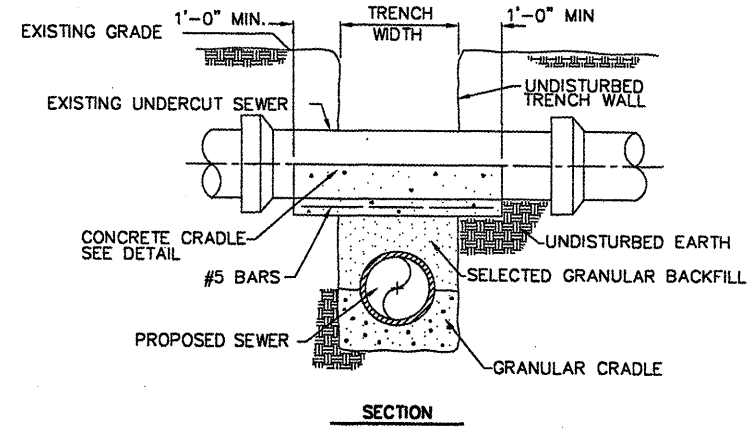
SANITARY MANHOLE ADJUSTMENT
 N.T.S.



RECONNECTION OF SERVICE SEWER, FIELD TILE, OR LATERAL PIPE ACROSS TRENCH IF NECESSARY
 N.T.S.



CONCRETE CRADLE DETAIL (IF NECESSARY)
 N.T.S.



SUPPORT OF UNDERCUT EXIST. SEWER (IF NECESSARY)
 N.T.S.

NOTE:
 CONCRETE SUPPORT FOR AN UNDERCUT SEWER TO BE USED ONLY WHERE REQUIRED BY THE ENGINEER AND SHALL BE PAID FOR PER CUBIC YARD.