

K:\Bloomington\0508509\_BMI\_ARFF\Draw\Sheets  
 FILE: PROPUTIL.dwg  
 UPDATE BY: Kristy Brod  
 PLOT DATE: 4/18/2008 8:34 AM  
 BASE\_EXISTGEO  
 BASE\_EXISTTOPO  
 BASE\_PROPUTIL  
 BASE\_PROPGEO

**BL064**

REVISIONS		
NUMBER	BY	DATE

0 1 2  
 THIS BAR IS EQUAL TO 2"  
 AT FULL SCALE (34X22).

**BLOOMINGTON-NORMAL AIRPORT AUTHORITY  
 CENTRAL ILLINOIS REGIONAL AIRPORT  
 BLOOMINGTON, ILLINOIS**

**CONSTRUCT NEW ARFF FACILITY  
 UTILITY PLAN 1**

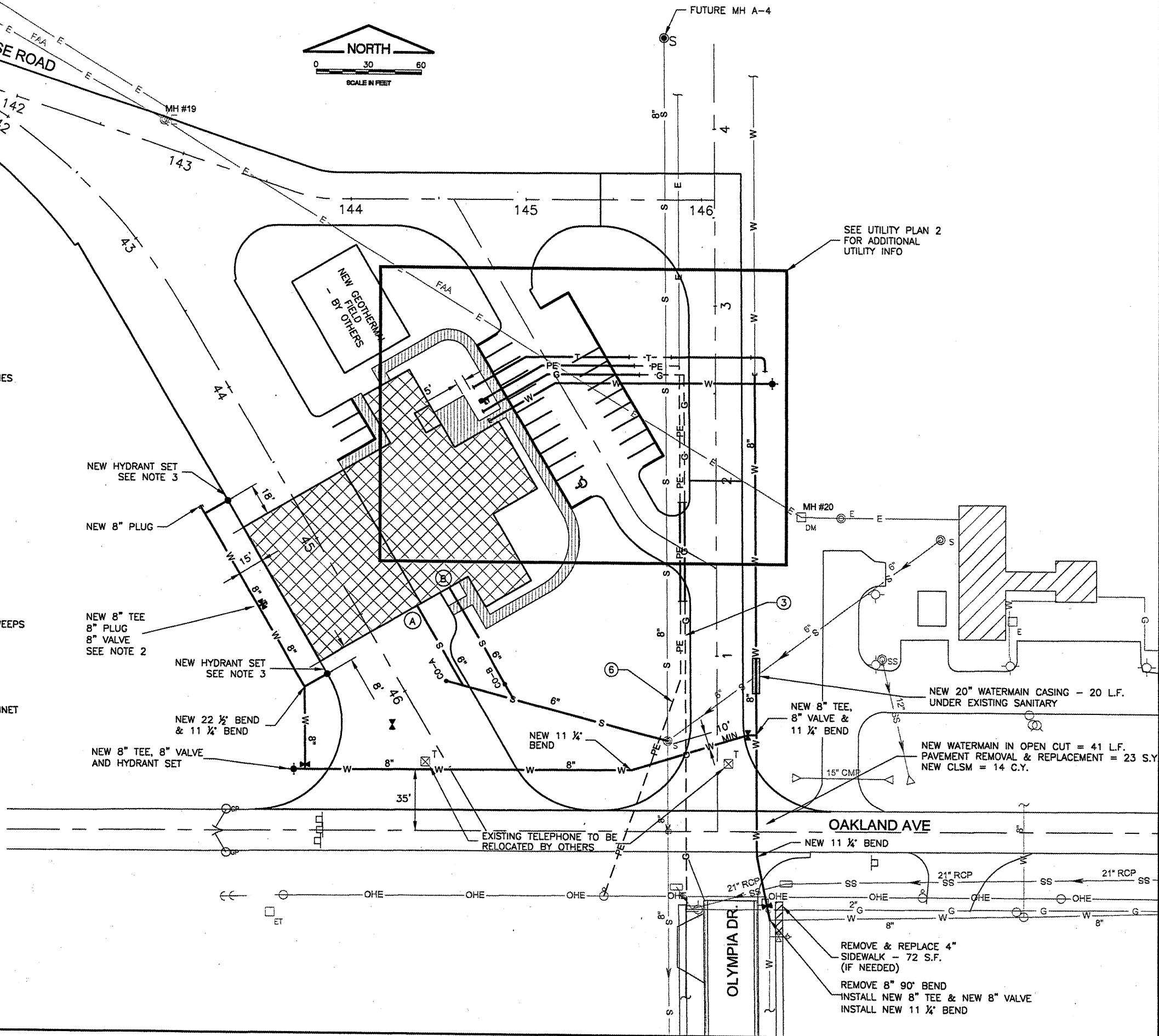
© Copyright CMT, Inc.  
**CMT**  
 CRAWFORD, MURPHY & TILLY, INC.  
 CONSULTING ENGINEERS  
 License No. 184-000613

DESIGN BY:	RLV/WHP
DRAWN BY:	DPA
CHECKED BY:	RLV
APPROVED BY:	RLV
DATE:	04/01/2008
JOB No:	0508509
IL PROJ. NO.	BMI-3797
AIP PROJ. NO.	3-17-0006-46 & 48
SHEET	36 OF 66 SHEETS



- LEGEND**
- 8" S — NEW SANITARY
  - 8" S — FUTURE SANITARY
  - 8" W — ① NEW 8" WATERMAIN
  - X — NEW 8" VALVE
  - — NEW FIRE HYDRANT INCLUDING ACCESSORIES
  - — NEW WATERMAIN PLUG
  - W — NEW WATERMAIN CASING—
  - W — NEW WATERMAIN - BY OTHERS
  - FP — NEW FIRE PROTECTION - BY OTHERS
  - W — FUTURE WATERMAIN
  - G — ② NEW 4" PVC DUCT FOR GAS SERVICE
  - G — ③ NEW GAS SERVICE - BY OTHERS
  - PE — ④ NEW (2) 4" PVC DUCT WITH LONG G.R.S. SWEEPS FOR PRIMARY ELECTRIC SERVICE
  - ET — NEW 6'x6' TRANSFORMER PAD - UTILITY PROVIDED - CONTRACTOR INSTALLED
  - PE — ⑤ NEW (2) PVC DUCT WITH LONG G.R.S. SWEEPS FOR PRIMARY ELECTRIC - BY OTHERS
  - PE — ⑥ NEW PRIMARY ELECTRIC SERVICE - DIRECT BURY - BY OTHERS
  - PE — FUTURE PRIMARY ELECTRIC SERVICE
  - — NEW PRIMARY ELECTRIC METER BASE/CABINET - BY OTHERS
  - T — ⑦ NEW (4) 4" PVC DUCTS FOR TELEPHONE/CATV/FUTURE SERVICE
  - T — ⑧ NEW TELEPHONE SERVICE - BY OTHERS
  - GEO — NEW GEOTHERMAL PIPING - BY OTHERS
  - SE — NEW SITE ELECTRIC - SEE ELECTRIC PLAN 2

- NOTES:**
- SELECT GRANULAR BACKFILL SHALL BE USED AS BACKFILL WHERE WATERMAIN, SEWER AND UTILITY CONDUITS ARE UNDER EXISTING AND NEW PAVEMENTS.
  - LOCATION OF THIS VALVE TO BE COORDINATED WITH THE BUILDING THROUGH THE ENGINEER.
  - LOCATE HYDRANT AT 5' FROM EDGE OF PAVEMENT.



SEE UTILITY PLAN 2 FOR ADDITIONAL UTILITY INFO

NEW 20" WATERMAIN CASING - 20 L.F. UNDER EXISTING SANITARY  
 NEW WATERMAIN IN OPEN CUT = 41 L.F. PAVEMENT REMOVAL & REPLACEMENT = 23 S.Y. NEW CLSM = 14 C.Y.

REMOVE & REPLACE 4" SIDEWALK - 72 S.F. (IF NEEDED)  
 REMOVE 8" 90° BEND  
 INSTALL NEW 8" TEE & NEW 8" VALVE  
 INSTALL NEW 11 1/2" BEND