

LEGEND

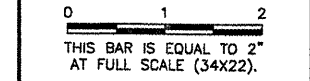
- DRAINAGE CONDUIT MATERIAL—CONCRETE
- MIDDLE BEDDING LOOSELY PLACED UNCOMPACTED BEDDING
- HAUNCH AND OUTER BEDDING COMPACTION— TO ENGINEER'S SATISFACTION OR 95% STANDARD PROCTOR
- LOWER SIDE AND OVERFILL COMPACTION— SAME AS EMBANKMENT REQUIREMENTS

D_o PIPE OUTSIDE DIAMETER
 D_i PIPE INSIDE DIAMETER

- NOTES**
- BEDDING SHOWN IS IN ACCORDANCE WITH "STANDARD EMBANKMENT INSTALLATIONS", STANDARD INSTALLATION & BEDDING FACTORS FOR THE INDIRECT DESIGN METHOD (DESIGN DATA 40), AMERICAN CONCRETE PIPE ASSOCIATION.
 - BACKFILL TO EXTEND 3' BEYOND EDGES OF PROPOSED PAVEMENT.

REVISIONS

NUMBER	BY	DATE

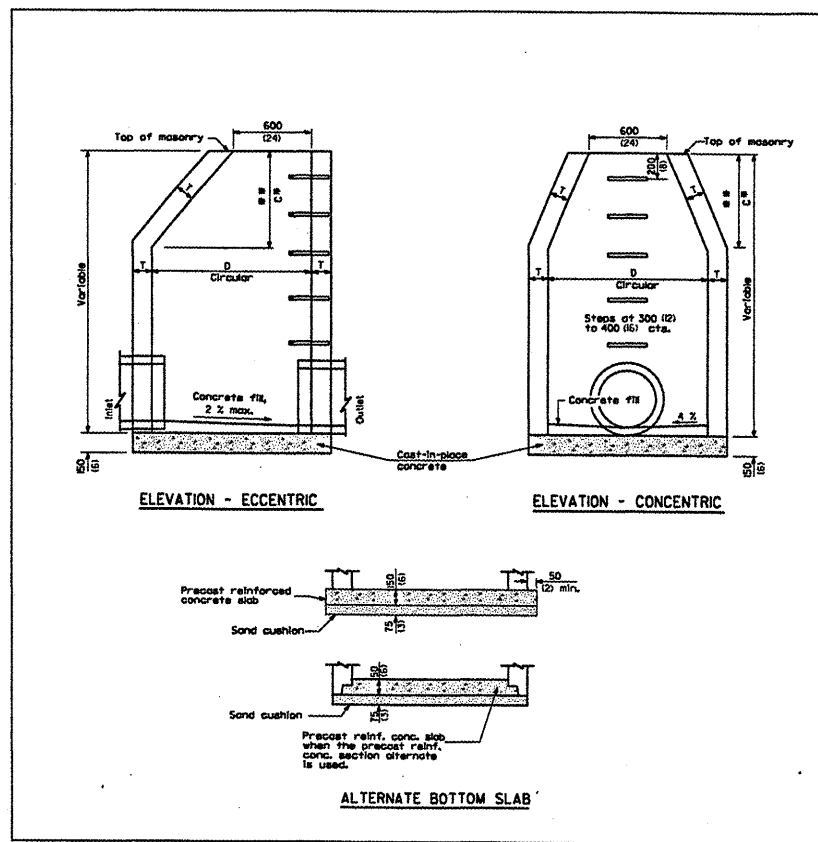


**BLOOMINGTON-NORMAL AIRPORT AUTHORITY
 CENTRAL ILLINOIS REGIONAL AIRPORT
 BLOOMINGTON, ILLINOIS**

**CONSTRUCT NEW ARFF FACILITY
 DRAINAGE DETAILS**

© Copyright CMT, Inc.
CMT
 CRAWFORD, MURPHY & TILLY, INC.
 CONSULTING ENGINEERS
 License No. 184-000633

DESIGN BY: RLV
 DRAWN BY: CMT
 CHECKED BY: *RLV*
 APPROVED BY: *RLV*
 DATE: 04/01/2008
 JOB No: 0508509



ALTERNATE MATERIALS FOR WALLS	D	C	T	(min.)
Concrete Masonry Unit	L2 = 14'-0"	750 (30)	225 (9)	25 (1)
	L3 = 15'-0"	L5 = 13'-9"	200 (8)	25 (1)
Brick Masonry	L2 = 14'-0"	750 (30)	200 (8)	25 (1)
	L3 = 15'-0"	L5 = 13'-9"	200 (8)	25 (1)
Precast Reinforced Concrete Section	L2 = 14'-0"	750 (30)	100 (4)	25 (1)
	L3 = 15'-0"	L5 = 13'-9"	125 (5)	25 (1)
Cast-in-place Concrete	L2 = 14'-0"	750 (30)	50 (2)	25 (1)
	L3 = 15'-0"	L5 = 13'-9"	50 (2)	25 (1)

GENERAL NOTES

See Standard 60270 for details of steps.

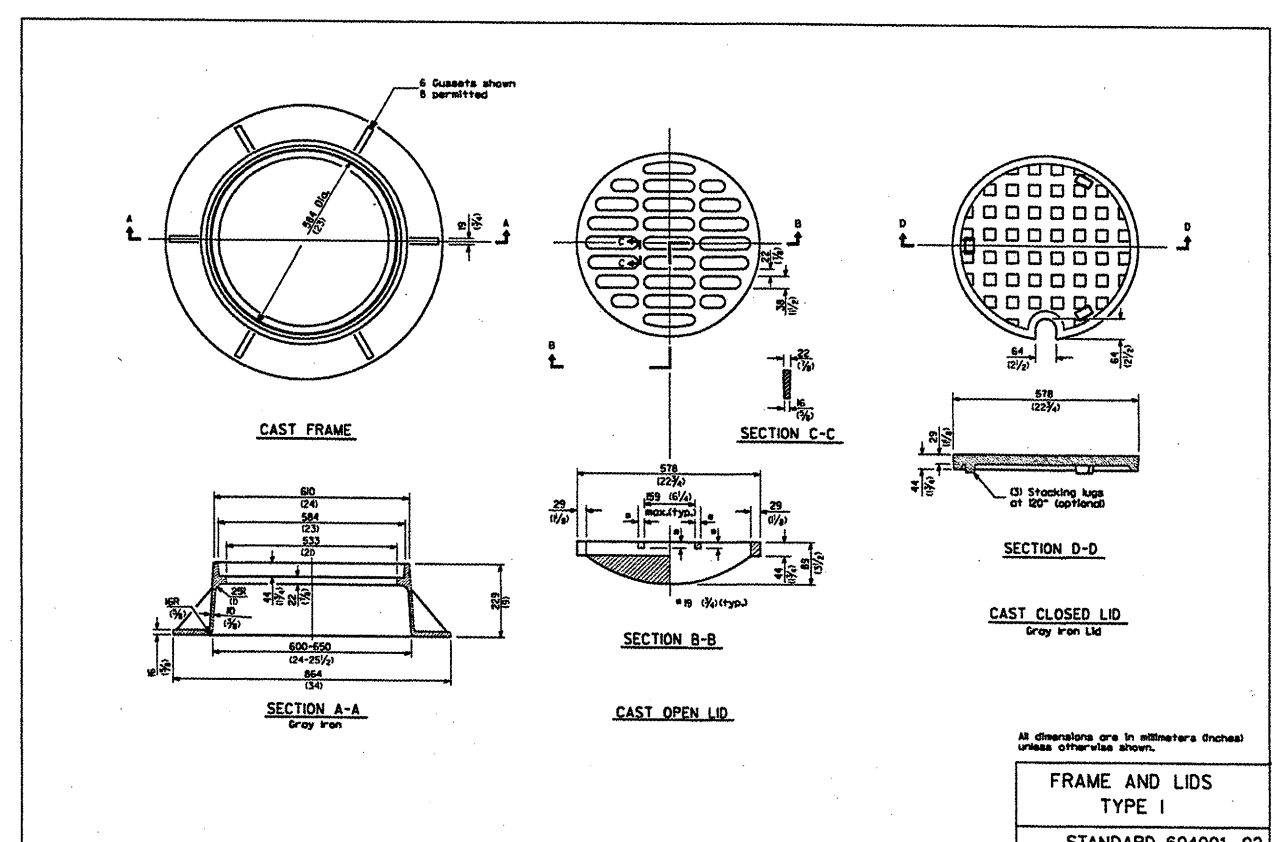
* Dimension "C" for Precast Reinforced Concrete Sections may vary from the dimension given to plus 50 mm (2").

** See Standard 60260 for Optional Precast Reinforced Concrete Flat Slab Top.

All dimensions are in millimeters (inches) unless otherwise shown.

MANHOLE TYPE A

STANDARD 602401-01



**FRAME AND LIDS
 TYPE I**

STANDARD 604001-02