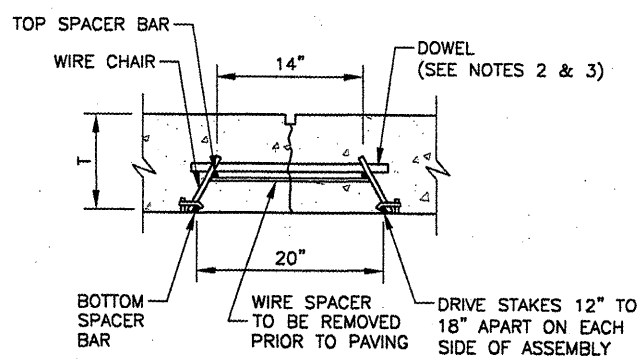
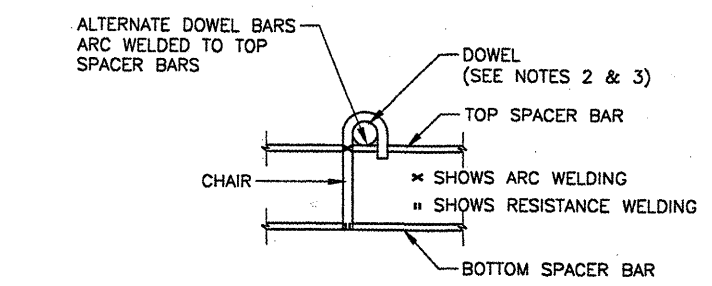


DOWEL BASKET ASSEMBLY DETAILS AND NOTES
 N.T.S.



DOWEL BAR INSTALLATION DETAIL
 N.T.S.

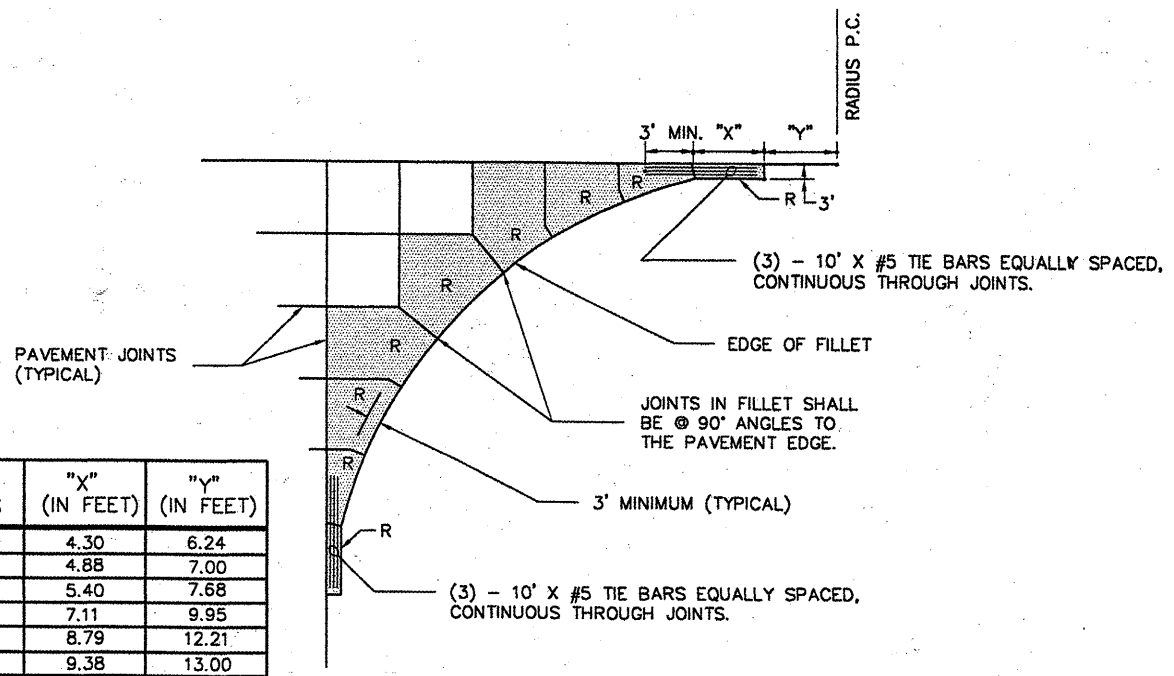


TYPICAL DOWEL BASKET ELEVATION DETAIL SHOWING CHAIR
 N.T.S.

DOWEL BASKET NOTES

- #9 GA. WIRE SPACER BAR ARC WELDED TO THE BOTTOM OF TOP SPACER BAR. (MAY BE MECHANICALLY ATTACHED IN LIEU OF WELDING) 3 REQUIRED PER UNIT. THIS WIRE MUST BE CUT OR REMOVED PRIOR TO PAVING.
- DOWEL BAR DIAMETER, LENGTH & SPACING SHALL BE AS SHOWN IN TABLE 2 JOINTING DETAILS 1.
- DOWELS SHALL BE EPOXY COATED FULL LENGTH OF DOWEL IMMEDIATELY PRIOR TO PAVING, THE FREE END OF EACH DOWEL SHALL BE LUBRICATED OR OILED, FOR HALF THE LENGTH OF THE DOWEL.

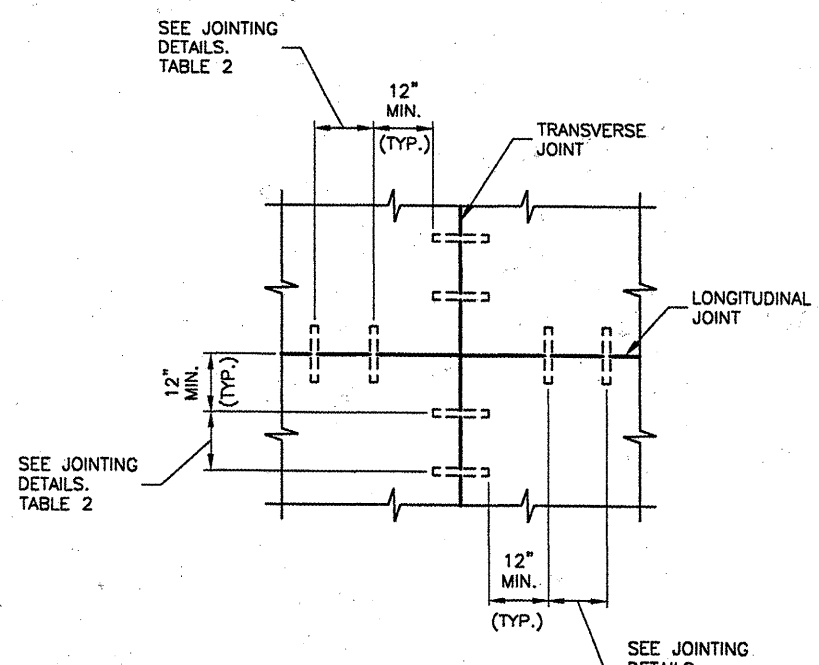
DOWEL BASKET DETAILS
 N.T.S.



FILLET RADIUS	"X" (IN FEET)	"Y" (IN FEET)
20	4.30	6.24
25	4.88	7.00
30	5.40	7.68
50	7.11	9.95
75	8.79	12.21
85	9.38	13.00
100	10.21	14.11
125	11.44	15.78
150	12.56	17.29
175	13.58	18.68
200	14.53	19.98

⊗ DENOTES ODD SHAPED REINFORCED PANELS TO BE REINFORCED WITH WELDED WIRE FABRIC AS SHOWN ON JOINTING DETAILS SHEET. ALL NON RECTANGULAR SHAPED PANELS SHALL BE REINFORCED. (REINFORCEMENT NOT SHOWN)

FILLET DETAIL AND FILLET REINFORCING LAYOUT
 N.T.S.



DOWEL PLACEMENT DETAIL
 N.T.S.

BL064

REVISIONS		
NUMBER	BY	DATE

0 1 2
 THIS BAR IS EQUAL TO 2" AT FULL SCALE (34X22).

BLOOMINGTON-NORMAL AIRPORT AUTHORITY
CENTRAL ILLINOIS REGIONAL AIRPORT
BLOOMINGTON, ILLINOIS
CONSTRUCT NEW ARFF FACILITY
JOINTING DETAILS 2

© Copyright CMT, Inc.
CMT
 CRAWFORD, MURPHY & TILLY, INC.
 CONSULTING ENGINEERS
 License No. 184-000619

DESIGN BY:	----
DRAWN BY:	CMT
CHECKED BY:	RW
APPROVED BY:	RW
DATE:	04/01/2008
JOB No:	0508509
IL PROJ. NO.	BMI-3797
AIP PROJ. NO.	3-17-0006-46 & 48
SHEET	23 OF 66 SHEETS