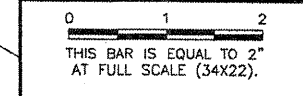


**BL064**

| REVISIONS |    |      |
|-----------|----|------|
| NUMBER    | BY | DATE |
|           |    |      |
|           |    |      |
|           |    |      |

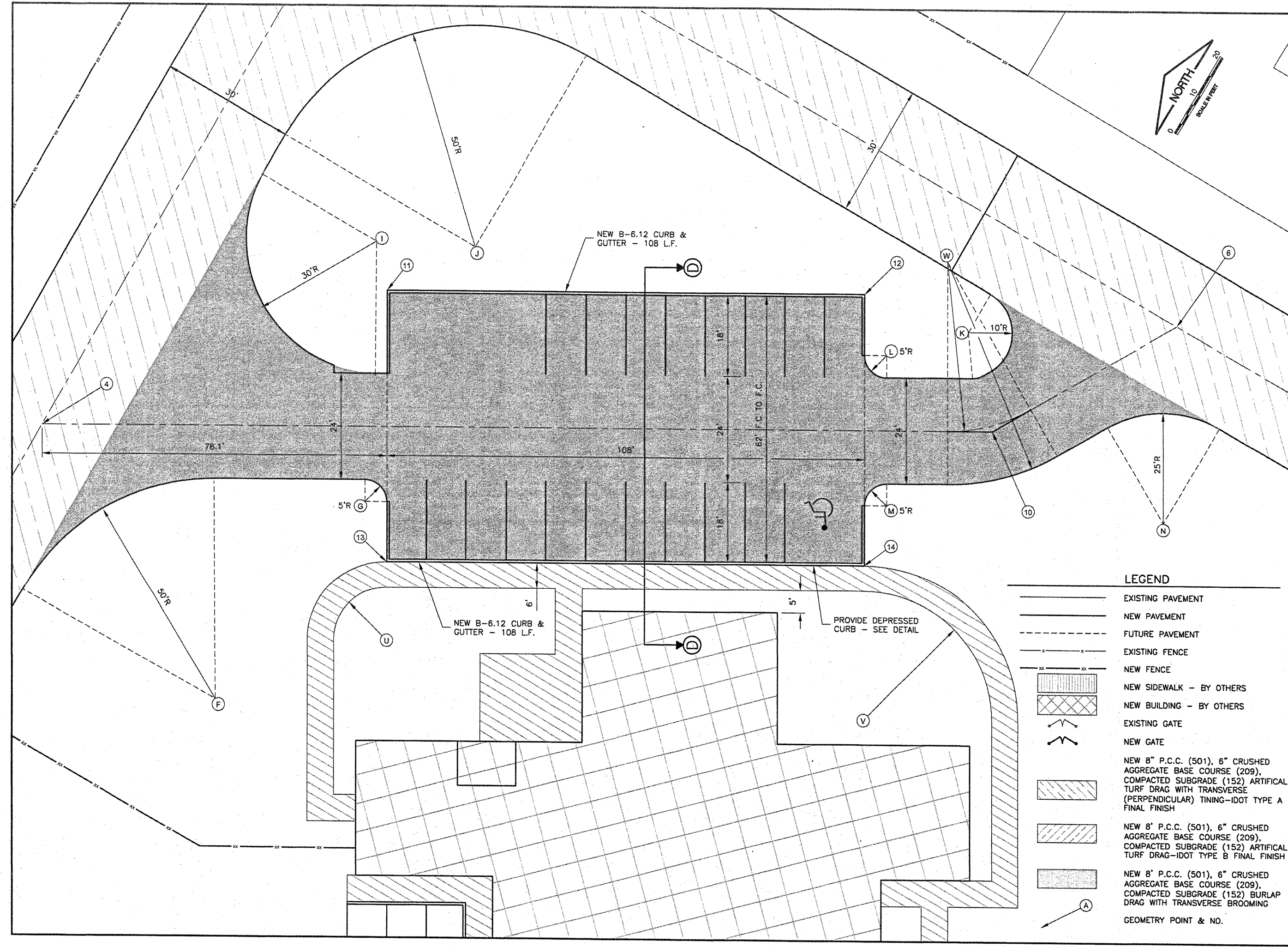


**BLOOMINGTON-NORMAL AIRPORT AUTHORITY  
 CENTRAL ILLINOIS REGIONAL AIRPORT  
 BLOOMINGTON, ILLINOIS**

**CONSTRUCT NEW ARFF FACILITY  
 PROPOSED IMPROVEMENTS 3**

© Copyright CMT, Inc.  
**CMT**  
 CRAWFORD, MURPHY & TILLY, INC.  
 CONSULTING ENGINEERS  
 License No. 184-000613

|               |                   |
|---------------|-------------------|
| DESIGN BY:    | RLV               |
| DRAWN BY:     | DPA               |
| CHECKED BY:   | <i>RLV</i>        |
| APPROVED BY:  | <i>RLV</i>        |
| DATE:         | 04/01/2008        |
| JOB No:       | 0508509           |
| IL PROJ. NO.  | BMI-3797          |
| AIP PROJ. NO. | 3-17-0006-46 & 48 |
| SHEET         | 12 OF 66 SHEETS   |



- LEGEND**
- EXISTING PAVEMENT
  - NEW PAVEMENT
  - FUTURE PAVEMENT
  - EXISTING FENCE
  - NEW FENCE
  - NEW SIDEWALK - BY OTHERS
  - NEW BUILDING - BY OTHERS
  - EXISTING GATE
  - NEW GATE
  - NEW 8" P.C.C. (501), 6" CRUSHED AGGREGATE BASE COURSE (209), COMPACTED SUBGRADE (152) ARTIFICIAL TURF DRAG WITH TRANSVERSE (PERPENDICULAR) TILING-IDOT TYPE A FINAL FINISH
  - NEW 8" P.C.C. (501), 6" CRUSHED AGGREGATE BASE COURSE (209), COMPACTED SUBGRADE (152) ARTIFICIAL TURF DRAG-IDOT TYPE B FINAL FINISH
  - NEW 8" P.C.C. (501), 6" CRUSHED AGGREGATE BASE COURSE (209), COMPACTED SUBGRADE (152) BURLAP DRAG WITH TRANSVERSE BROOMING
  - GEOMETRY POINT & NO.