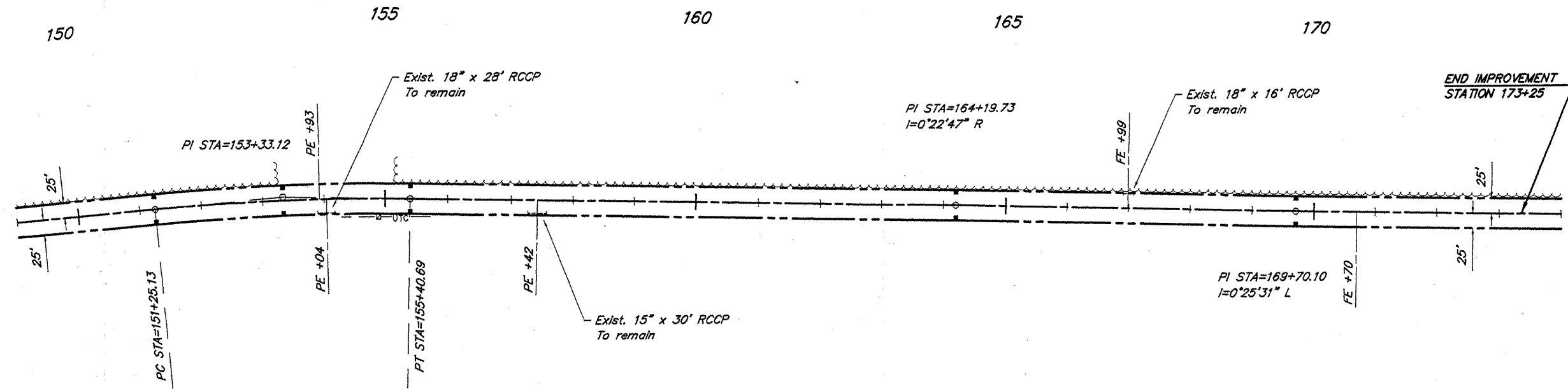
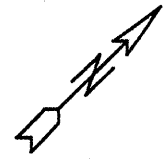
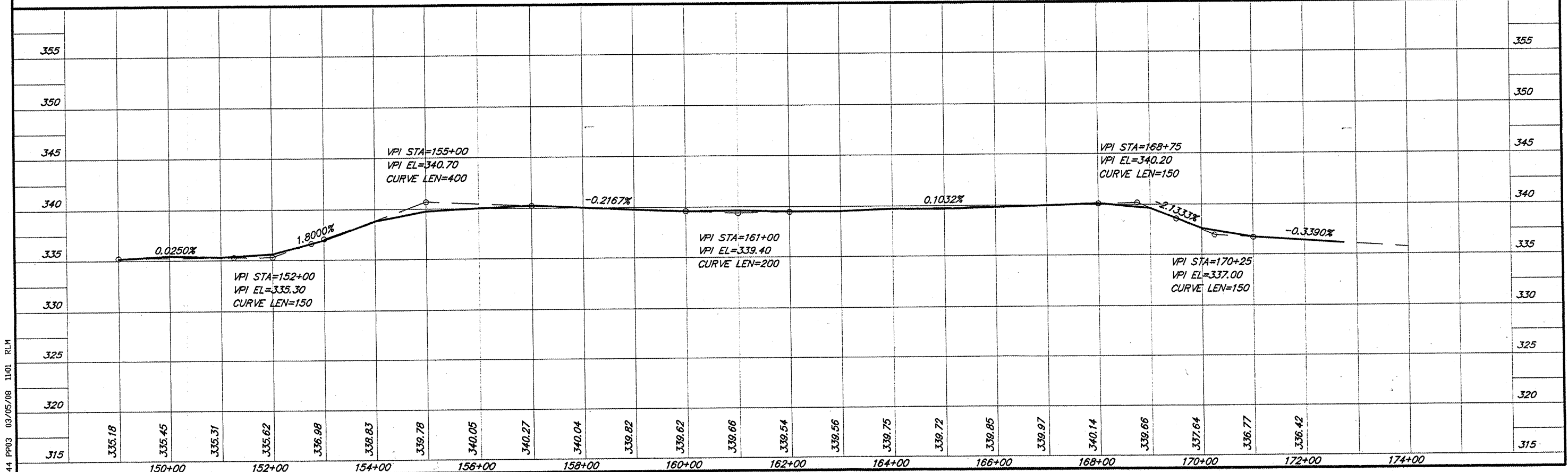


ROUTE	SECTION	COUNTY	TOTAL SHEETS	SHEET NO.
FAS 928	05-00060-00-RS	JOHNSON	7	6
PROJECT NO. RS-928 (105)			CONTRACT NO. 99333	



SCALES:  
 1" = 200' HOR  
 1" = 10' VER

**CURVE DATA**  
 $\Delta = 6^{\circ}17'26''$   $T = 207.99'$   
 $D = 1^{\circ}30'50''$   $L = 415.56'$   
 $R = 3785.00'$   $E = 5.71'$   
 S.E. = 0.031'/ft.  
 Attain Sta. 150+44 to Sta. 151+46  
 Remove Sta. 155+20 to Sta. 156+22



644 PPO3 03/05/08 11:01 RL.M