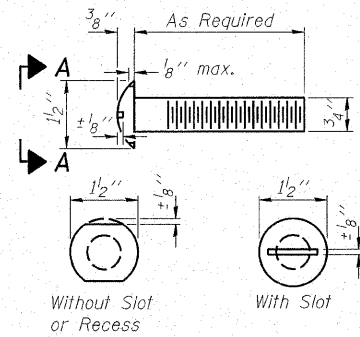
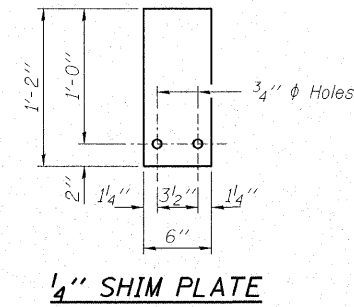
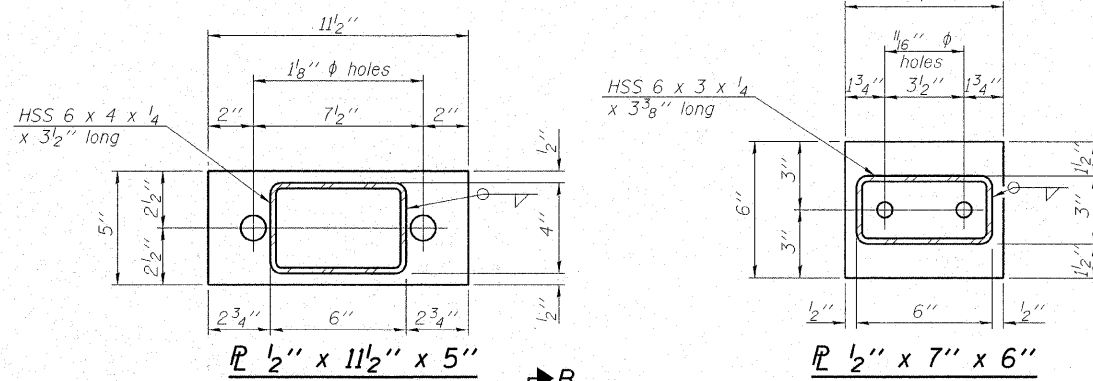


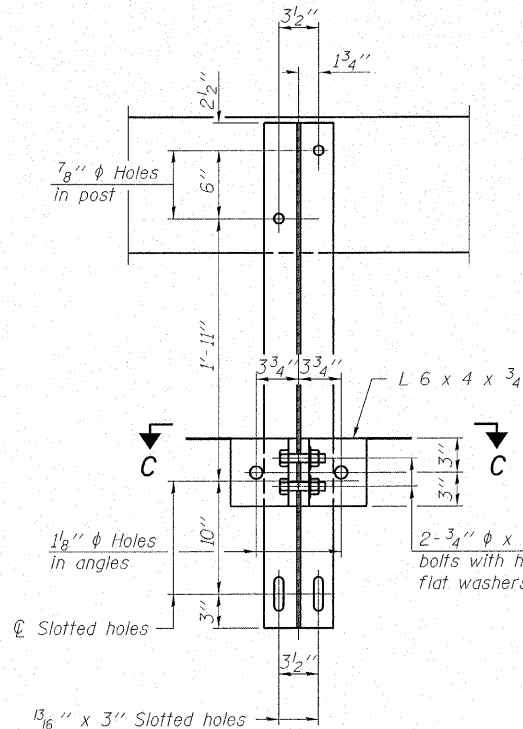
ROUTE NO. C.H. 7	SECTION 06-00097 -00-BR	COUNTY UNION	TOTAL SHEETS 16	SHEET NO. 12
FED. ROAD DIST. NO.		ILLINOIS	CONTRACT NO. 99311	



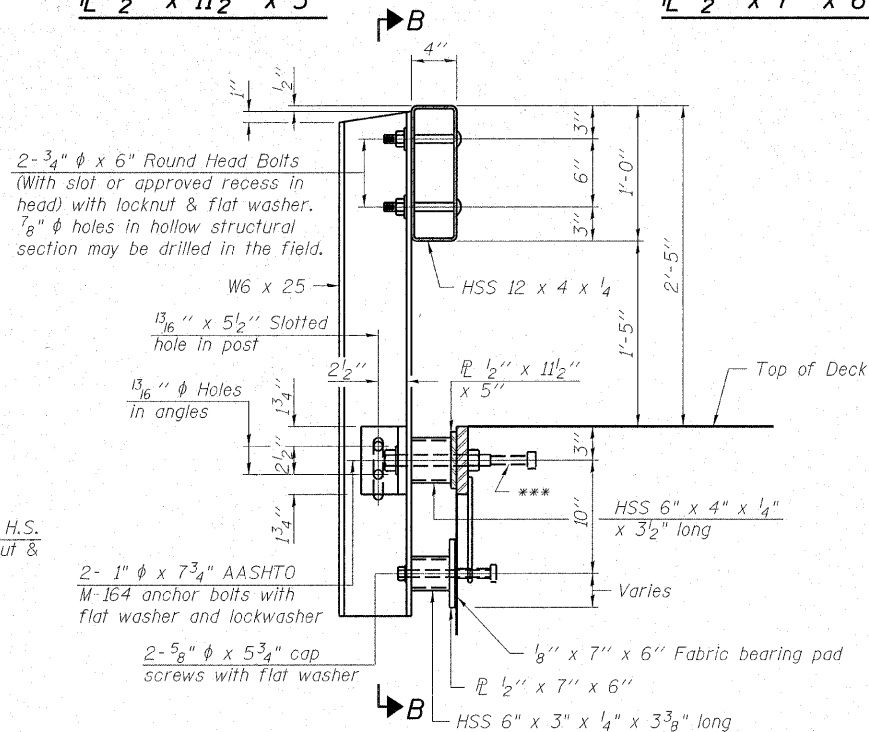
**VIEW A-A
ROUND HEAD BOLT**



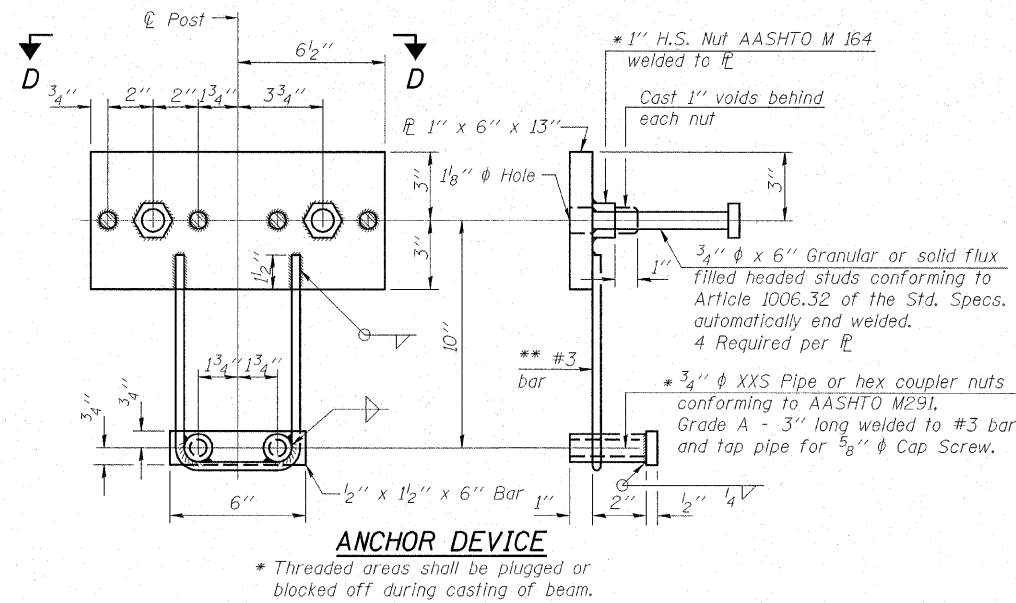
1/4" SHIM PLATE



SECTION B-B

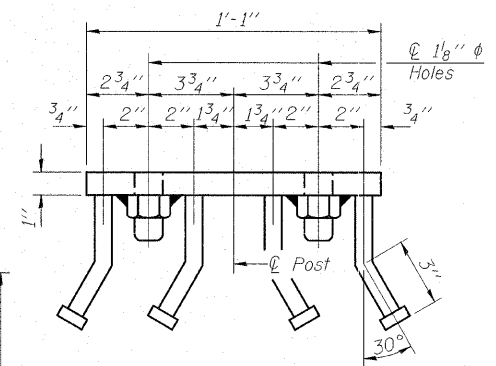


SECTION AT RAILING POST

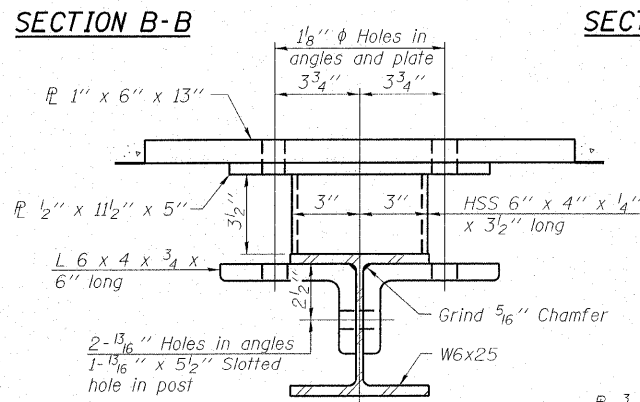


ANCHOR DEVICE

Notes:
 All field drilled holes shall be coated with an approved zinc rich paint before erection.
 For multi-span bridges, sufficient 1/4" x 6" x 1'-2" galvanized steel shims shall be provided to align rail between adjacent spans. Cost included with Steel Railing, Type S-1.
 All steel rail elements shall be galvanized according to Article 509.05 of the Standard Specifications.
 The studs of the anchor devices shall be placed below the top reinforcement bars and the outermost longitudinal reinforcement bar shall be placed directly above the studs of the rail post anchor device.

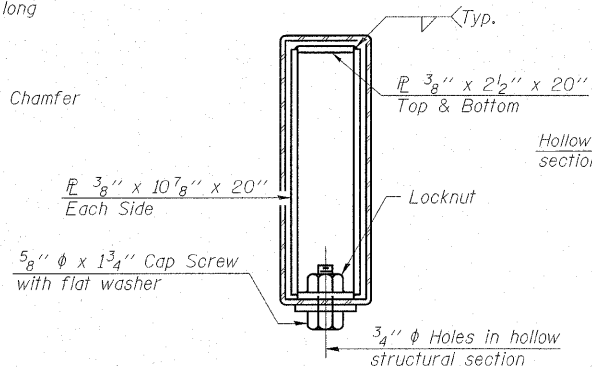


VIEW D-D

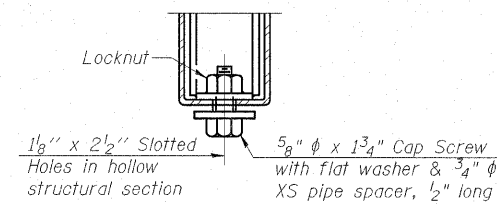


SECTION C-C

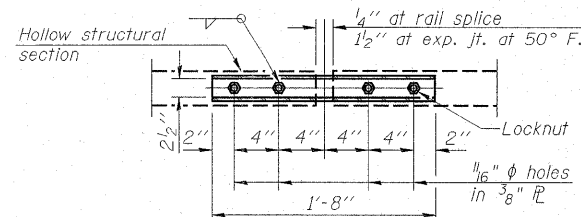
** Whenever the lower insert assemblies interfere with strand locations, the #3 bars shall be cut and adjusted in order to allow raising or lowering of the lower inserts. Maximum adjustment not to exceed 1/2".



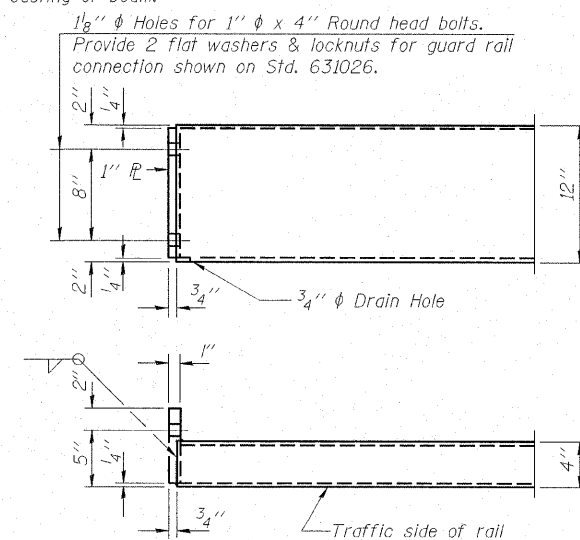
SECTIONS AT RAIL SPLICE



**RAIL SPLICE CONNECTION
AT EXPANSION JT.**



PLAN-BOTT. SPLICE TYPICAL



END OF RAIL DETAILS

BILL OF MATERIAL

Item	Unit	Quantity
Steel Railing, Type S-1	Foot	100

HAMPTON, LENZINI & RENWICK, INC.
 CIVIL & STRUCTURAL ENGINEERS
 LAND SURVEYORS
 3085 STEVENSON DRIVE, SUITE 201
 SPRINGFIELD, ILLINOIS 62703
 (217) 546-3400

ELGIN • SPRINGFIELD

PROJECT NUMBER: 12-92-0008-1 DATE: 02/07/08
 DESIGNED: R.J.P. CHECKED: S.W.M. DRAWN: D.A.B.

RAILING DETAILS
 SECTION 06-00097-00-BR
 C.H. 7 / MT. PLEASANT ROAD
 UNION COUNTY
 STRUCTURE NO. 091-3232 / STATION 10+00