

# STATE OF ILLINOIS

## DEPARTMENT OF TRANSPORTATION

### DIVISION OF HIGHWAYS

# PLANS FOR PROPOSED HIGHWAY BRIDGE PROGRAM

ROUTE NO.	SECTION	COUNTY	TOTAL SHEETS	SHEET NO.
C.H. 7	06-00097-00-BR	UNION	16	1
FED. ROAD DIST. NO.		ILLINOIS	CONTRACT NO. 99311	

#### INDEX OF SHEETS

1. COVER SHEET
2. SUMMARY OF QUANTITIES AND TYPICAL SECTIONS
3. PLAN AND PROFILE
- 4.-8. STATION CROSS SECTIONS
- 9.-14. BRIDGE PLANS
- 15.-16. BORINGS

#### HIGHWAY STANDARDS:

- 000001-05 STANDARD SYMBOLS, ABBREVIATIONS, AND PATTERNS
- 515001-02 NAME PLATE FOR BRIDGES
- 630301-04 SHOULDER WIDENING FOR TYPE 1 (SPECIAL) GUARDRAIL TERMINALS
- 635006-02 REFLECTOR AND TERMINAL MARKER PLACEMENT
- 701901 TRAFFIC CONTROL DEVICES
- BLR 21-7 TYPICAL APPLICATION OF TRAFFIC CONTROL DEVICES FOR CONSTRUCTION ON RURAL LOCAL HIGHWAYS
- BLR 26 STEEL PLATE BEAM GUARDRAIL 27.5 INCH HEIGHT
- BLR 27 TRAFFIC BARRIER TERMINAL, TYPE 5A

SCALES	}	PLAN	0' = 50'
		PROFILE HORIZ.	0' = 50'
		PROFILE VERT.	0' = 5'
		CROSS SECTIONS	0' = 5'

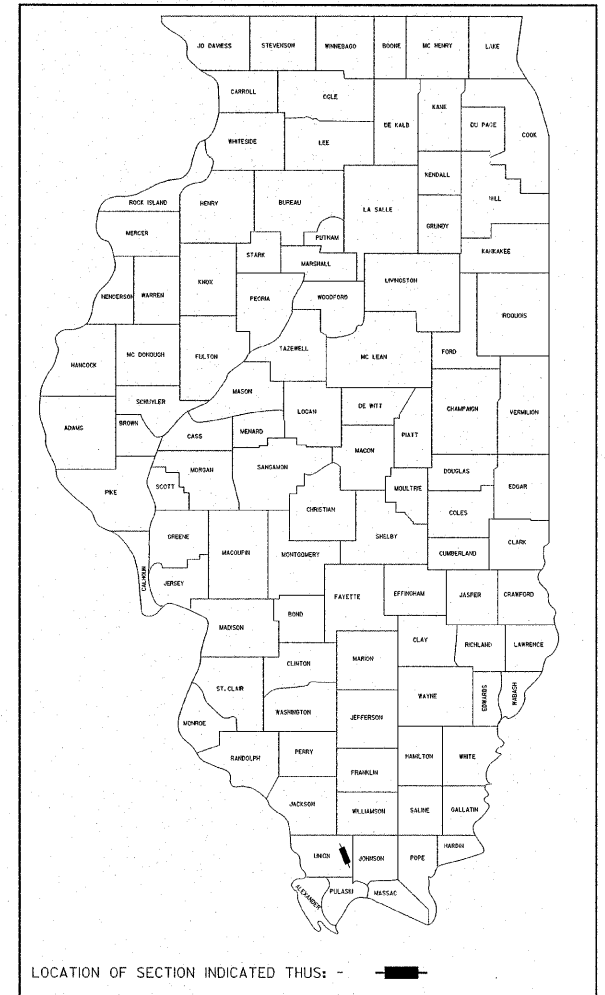
## PROJECT BROS-181(31)

### SECTION 06-00097-00-BR

### C.H. 7 / MT. PLEASANT ROAD

### UNION COUNTY

### C-99-532-07



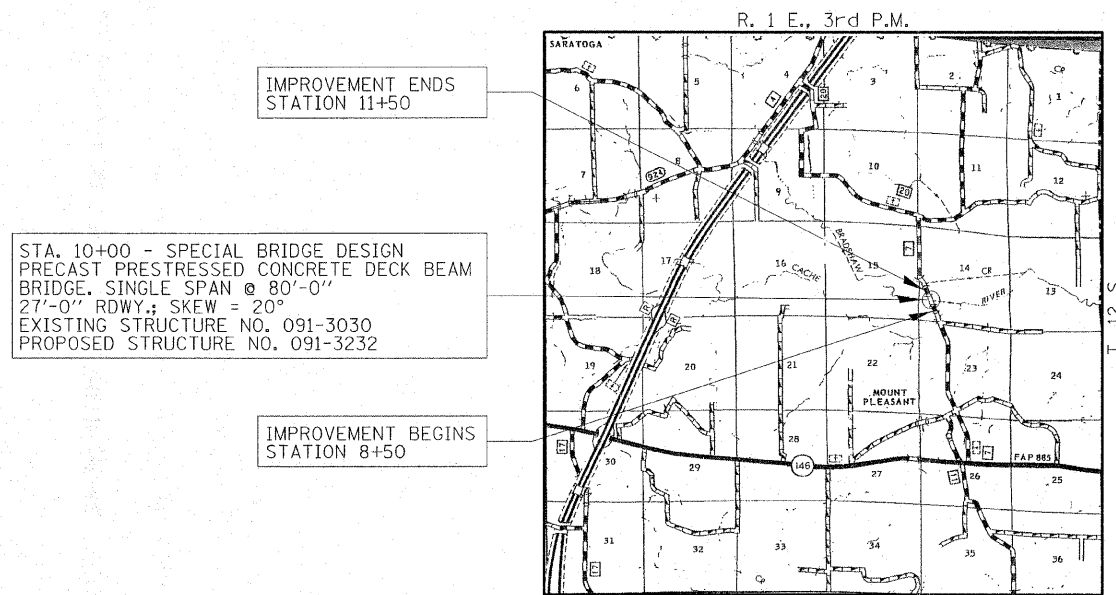
#### UTILITIES

LICK CREEK PUBLIC WATER DISTRICT  
150 BORGSMILLER LANE  
MURPHYSBORO, IL 62966  
618-687-1670

SOUTHERN ILLINOIS POWER CO-OP  
1143 LAKE OF EGYPT ROAD  
MARION, IL 62959

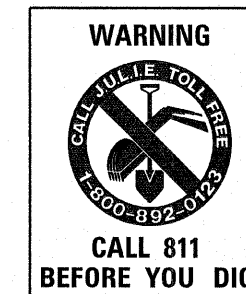
DESIGN FUNCTIONAL CLASSIFICATION:  
RURAL COLLECTOR <400 ADT  
DESIGN TRAFFIC: 250 ADT  
DESIGN SPEED: 40 M.P.H.

CONTRACT NO. 99311



#### LAYOUT

APPROXIMATE SCALE: 0 = 1 MILE  
NET LENGTH OF SECTION = 300 FEET = 0.057 MILES



AGENCY RESPONSIBLE FOR LETTING	
APPROVED	<i>February 26, 2008</i> <i>Bill R. Boyle</i> COUNTY ENGINEER
PASSED	<i>MARCH 25, 2008</i> <i>Dennis W. Hill</i> DISTRICT NINE ENGINEER OF LOCAL ROADS & STREETS
Releasing For Bid Based on Limited Review	<i>3-25</i> <i>Mary C. Kemi</i> 2008 DEPUTY DIRECTOR OF HIGHWAYS, REGION FIVE ENGINEER
STATE OF ILLINOIS DEPARTMENT OF TRANSPORTATION	

DATE: <i>February 7, 2008</i> 	<b>HAMPTON, LENZINI &amp; RENWICK, INC.</b> CIVIL & STRUCTURAL ENGINEERS LAND SURVEYORS  3085 STEVENSON DRIVE, SUITE 201 SPRINGFIELD, ILLINOIS 62703 (217) 546-3400 ELGIN • SPRINGFIELD
EXPIRES: 11/30/2009	PROJECT NUMBER: 12-92-0008-1 DATE: 02/07/08