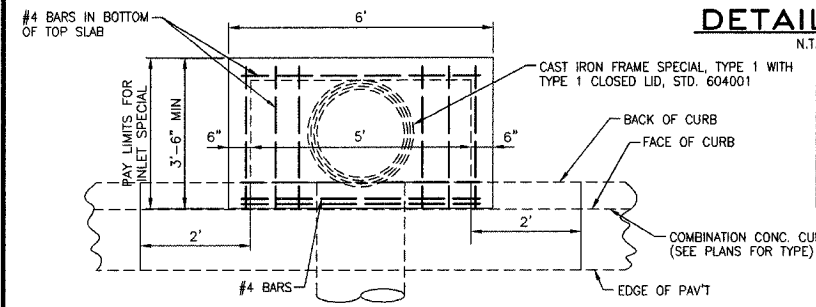


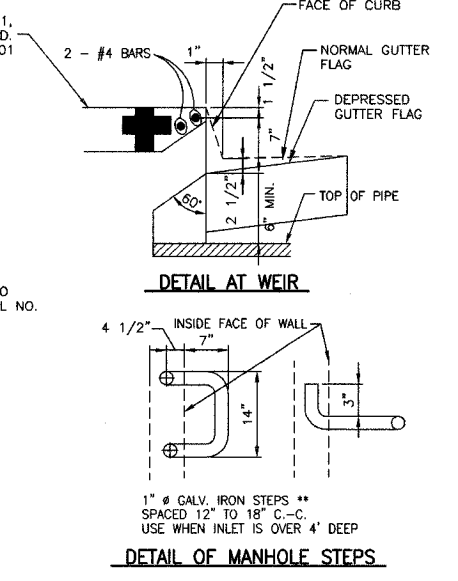
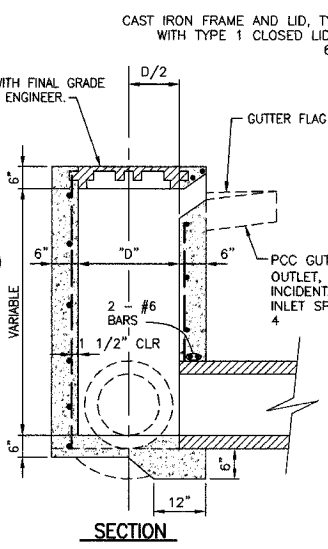
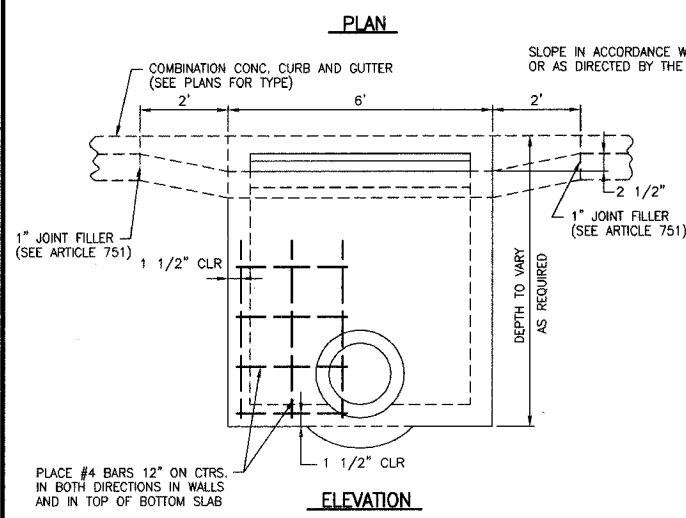
CONTRACT NO. 99309

DETAILS OF INLET SPECIAL NO. 4

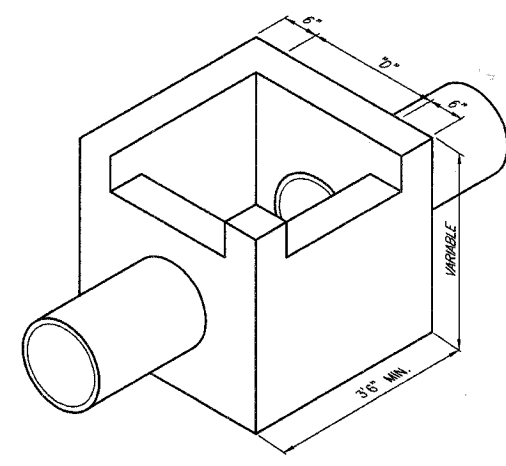
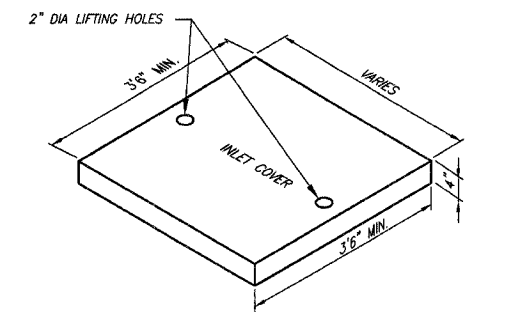


DESIGN	PIPE DIAM.	"D"
A	18" OR LESS	2'-6"
B	21" & 24"	3'-0"
C	27" & 30"	3'-7"
D	33" & 36"	4'-2"
E	42"	4'-9"
F	48"	5'-6"
G	54"	6'-1"

NOTES:
 CLASS SI CONCRETE SHALL BE USED THROUGHOUT. SET FACE OF INLET 1" BEHIND FACE OF CURB. DEPRESS GUTTER FLOWLINE AT INLET 2 1/2" BELOW NORMAL GUTTER FLOWLINE. CONSTRUCT TRANSITION IN FLOWLINE IN 2 FEET EACH SIDE OF INLET. PIPES SHALL BE CONNECTED TO INLET AS SHOWN ON STORM SEWER LAYOUT.
 INLETS WILL BE PAID FOR AT THE CONTRACT UNIT PRICE EACH FOR INLET, SPECIAL NO. 4, WHICH PRICE SHALL INCLUDE THE CAST IRON FRAME, SPECIAL TYPE 1 WITH TYPE 1 CLOSED LID, THE REINFORCEMENT BARS, METAL STEPS, AND JOINT FILLER.
 **THE GALV. IRON STEPS AS DETAILED HEREON ARE TYPICAL. STEPS OF OTHER DESIGN AND MATERIAL THAT WILL CONFORM TO THE MINIMUM REQUIREMENTS OF THE STEPS SHOWN MAY BE USED WHEN APPROVED BY THE ENGINEER.

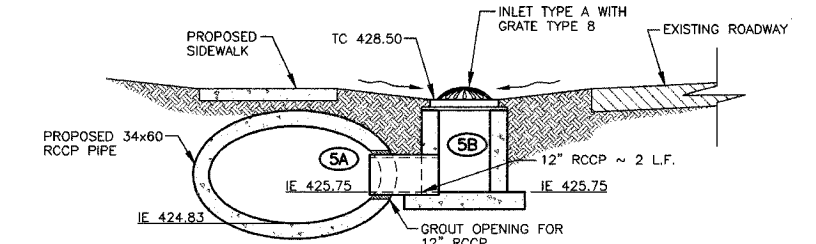
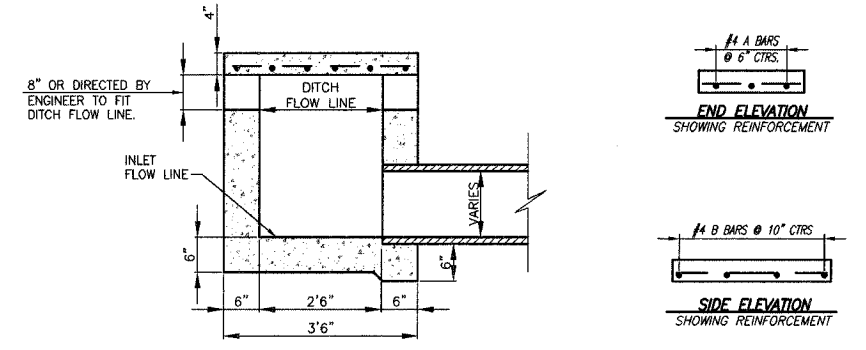


DETAILS OF INLET SPECIAL NO. 5

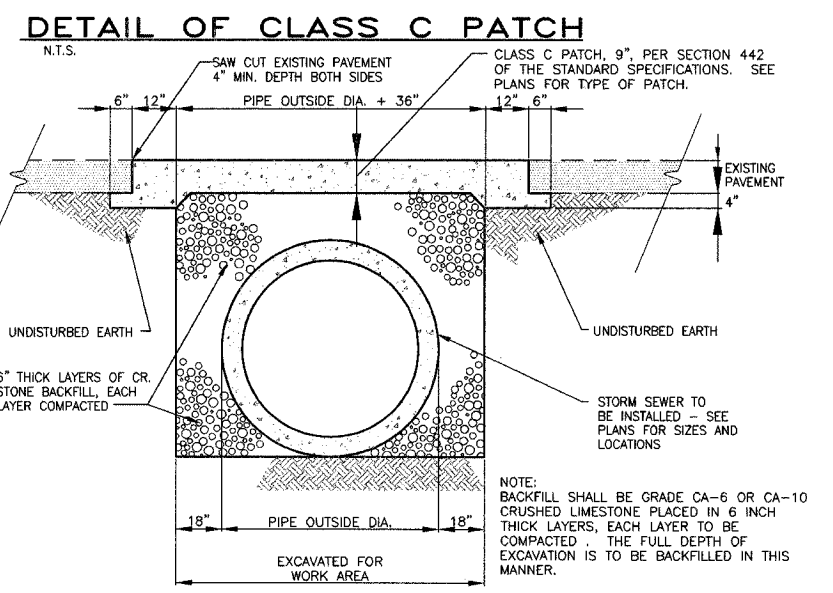


DESIGN	PIPE DIAM.	"D"
A	18" OR LESS	2'-6"
B	21" & 24"	3'-0"
C	27" & 30"	3'-7"
D	33" & 36"	4'-2"
E	42"	4'-9"
F	48"	5'-6"
G	54"	6'-1"
H	60"	6'-8"

NOTES:
 CLASS SI CONCRETE SHALL BE USED THROUGHOUT. THE INLET SHALL BE PAID FOR AT THE CONTRACT UNIT PRICE EACH FOR INLETS, SPECIAL TYPE 5, WHICH PRICE SHALL INCLUDE THE COST OF REINFORCEMENT BARS AND ALL MATERIAL AND LABOR FOR CONSTRUCTING THE INLET COMPLETE IN PLACE.
 THE COVERS SHALL BE CAST SEPARATELY.
 THE DEPTH OF THE INLET SHALL VARY. SEE PLANS FOR ELEVATIONS.
 INLET MAY HAVE MORE THAN ONE INLET OPENING, AS SHOWN ON THE PLANS, OR AS DIRECTED BY THE ENGINEER.



DETAIL OF INLET SPECIAL NO. 6



STATE OF ILLINOIS PROFESSIONAL DESIGN FIRM LICENSE NO. 184-004515

© 2008 ALL RIGHTS RESERVED

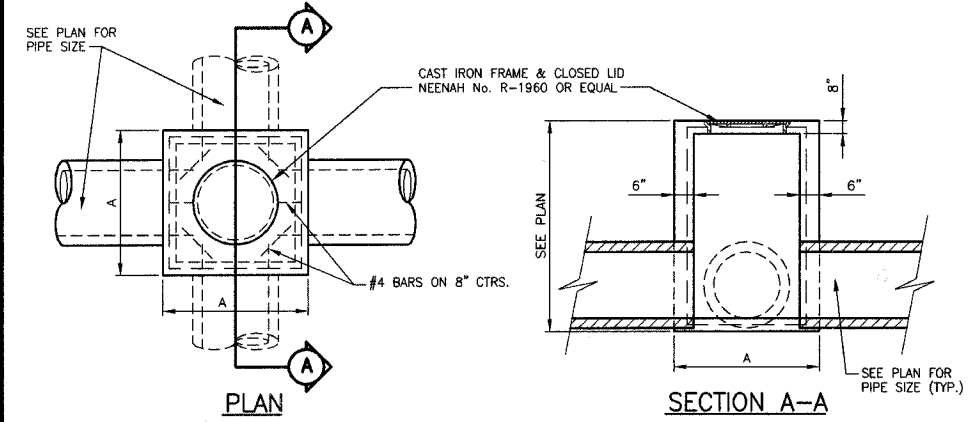
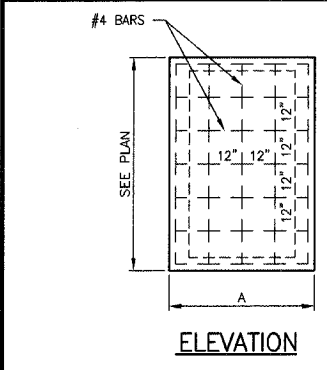
CLARIDA & ZIEGLER ENGINEERING CO.
 308 South Court St., P.O. Box 937
 Marion, Illinois 62959
 Phone - (618)993-6411, Fax - (618)993-6750

MISCELLANEOUS DETAILS
 FAIR STREET WIDENING
 MARION, ILLINOIS

Date 2/26/08 DR By TDE CK'D By HGC
 Scale NONE Job No. 05142 Sheet No. 52 of 53

CLASS SI CONCRETE SHALL BE USED THROUGHOUT. THE CONTRACT PRICE FOR JUNCTION BOX SHALL INCLUDE THE COST OF CAST IRON FRAME, SPECIAL TYPE 1, WITH TYPE 1 CLOSED LID OR GRATE AND ALL CONCRETE AND REBAR NECESSARY TO CONSTRUCT THE JUNCTION BOX.

PIPE DIA.	WIDTH "A"
18" OR LESS	4'0"
21" TO 24"	4'6"
27" & 30"	5'0"
60"	7'6"
2'X7' BOX	9'0"



DETAILS OF JUNCTION BOX

