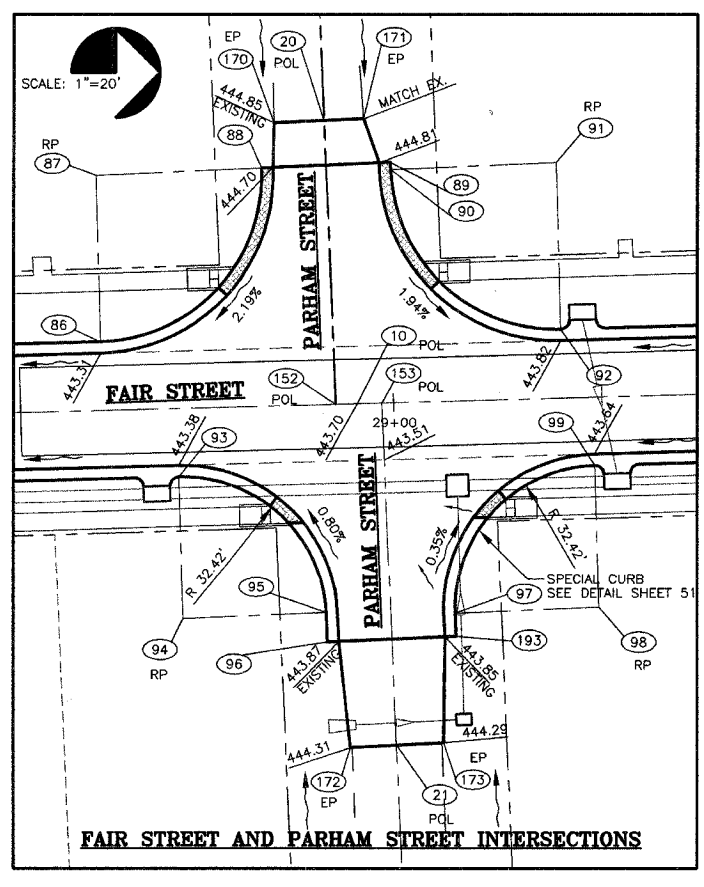
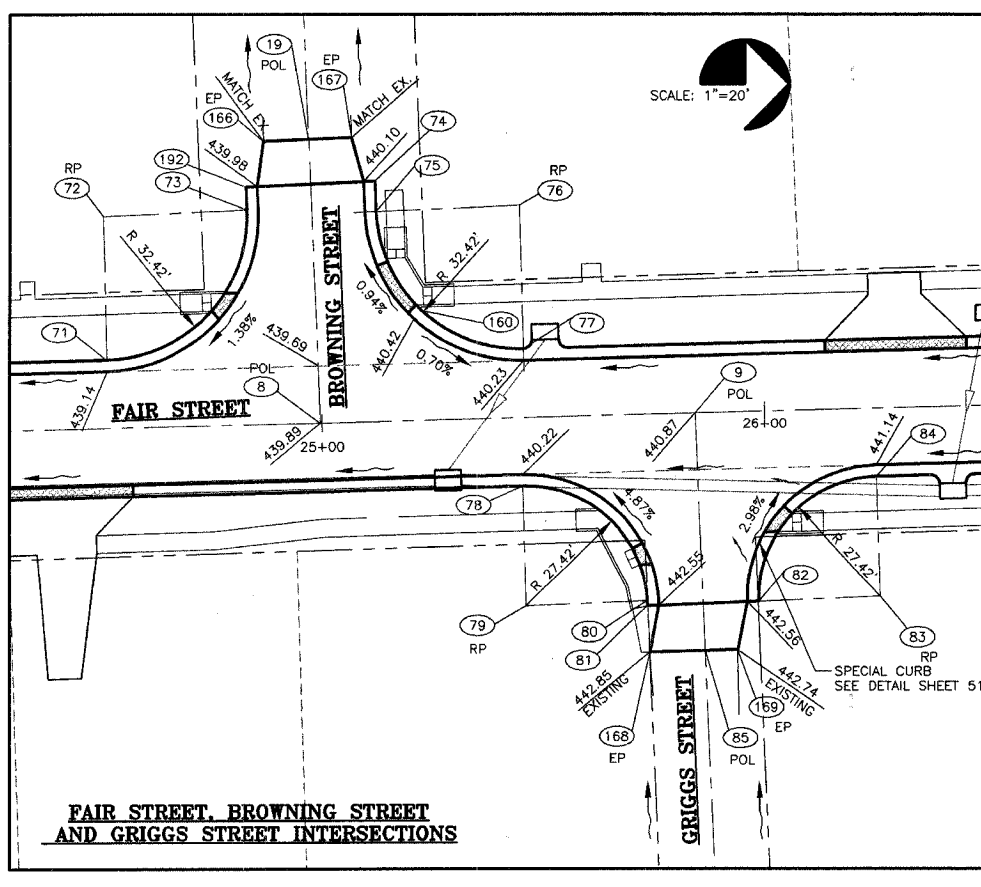
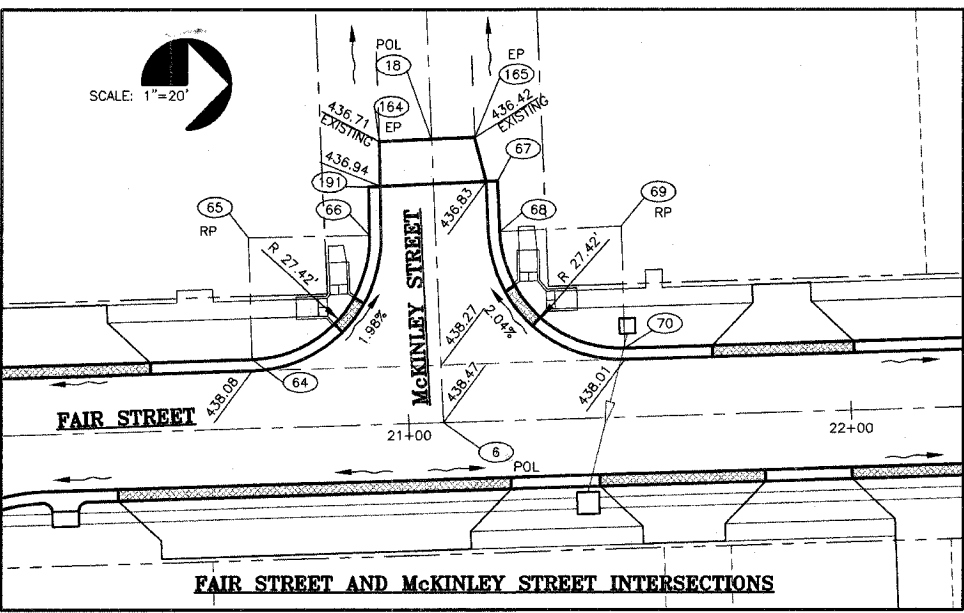
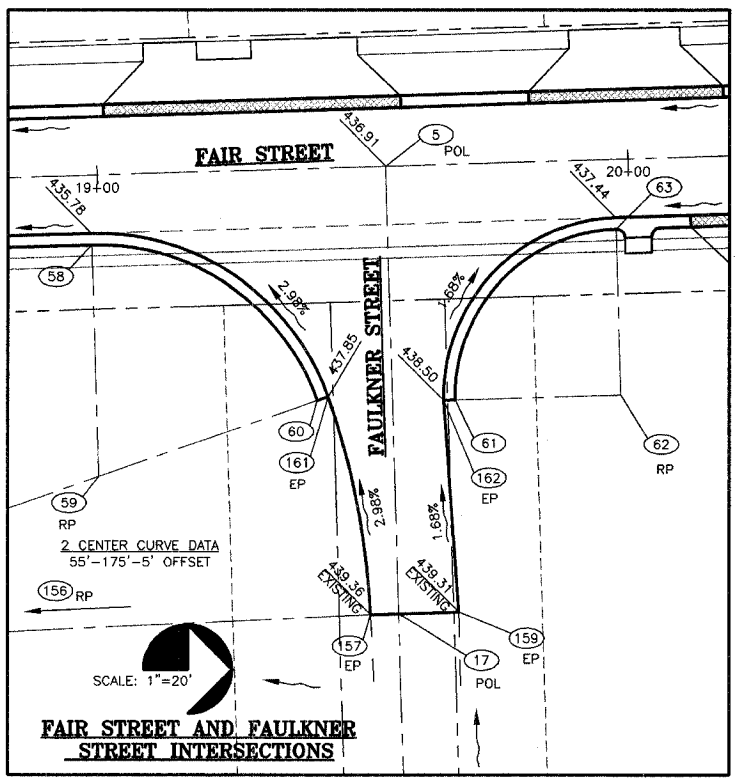
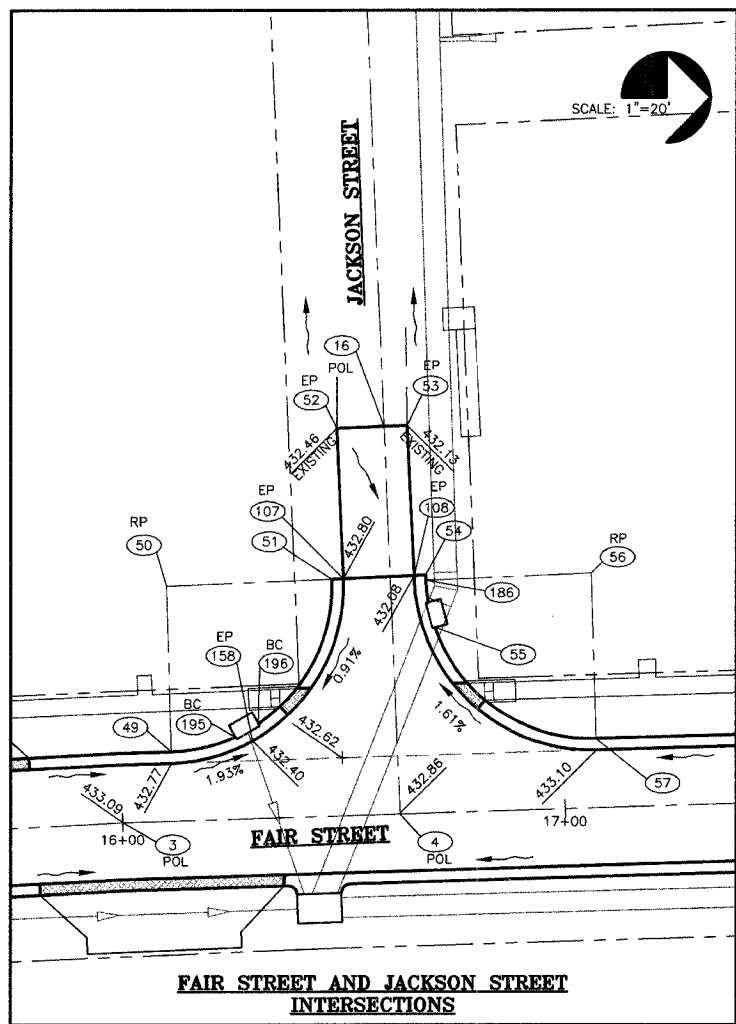


CONTRACT NO. 99309



NODE	NORTHING	EASTING	I.E.	DESCRIPTION
72	11469.1277	10748.6564	0.0000	radius
73	11501.5170	10747.2473	440.2900	back curb
74	11530.4280	10740.8885	440.4800	back curb
75	11530.7208	10747.6200	440.5400	back curb
76	11563.1102	10746.2109	0.0000	radius
77	11564.0071	10778.6185	440.6100	back curb
78	11563.9696	10809.7914	440.6000	back curb
79	11564.7282	10837.2009	0.0000	radius
80	11592.1229	10836.0248	442.8700	back curb
81	11592.1755	10837.2484	442.9300	back curb
82	11617.3123	10836.1693	442.9400	back curb
83	11644.7071	10834.9932	0.0000	radius
84	11643.9523	10807.5836	441.5200	back curb
85	11605.1892	10847.0824	0.0000	cl griggs st
86	11852.1583	10770.6786	443.6900	back curb
87	11851.1283	10733.2728	0.0000	radius
88	11888.5129	10731.6464	445.0800	back curb
89	11917.6454	10730.3790	445.1900	back curb
90	11917.7160	10732.0037	445.1600	back curb
91	11955.1007	10730.3773	0.0000	radius
92	11956.1574	10767.7823	444.0000	back curb
93	11869.9541	10801.3604	443.7600	back curb
94	11870.8465	10833.7881	0.0000	radius
95	11803.2359	10832.3590	444.2000	back curb
96	11803.5201	10838.8916	444.2500	back curb
97	11932.4319	10832.5521	444.2100	back curb
98	11964.8212	10831.1430	0.0000	radius
99	11963.9061	10798.7359	444.0200	back curb
100	12246.3757	10759.5868	444.7900	back curb
101	12245.3194	10722.1818	0.0000	radius
102	12282.7040	10720.5538	444.4500	back curb
103	12282.3383	10712.1546	444.4000	back curb
104	12313.4687	10710.7972	444.6300	back curb
105	12350.8532	10709.1692	0.0000	radius
106	12351.9299	10746.5737	445.5300	back curb
107	10668.7598	10766.5405	432.8000	edge pavement
108	10684.7457	10765.8686	432.0800	edge pavement
109	12247.8734	10790.7170	444.7900	back curb
110	12248.9297	10828.1221	0.0000	radius
111	12286.3144	10826.4956	445.7900	back curb
112	12286.3846	10828.1109	445.8200	back curb
113	12319.3441	10821.5982	445.9400	back curb
114	12351.6821	10820.1913	0.0000	radius
115	12350.7508	10787.8361	445.6700	back curb
116	12420.9962	10744.5856	448.2500	back curb
117	12556.2280	10750.6971	447.5900	back curb
118	12670.2698	10747.4144	448.5800	back curb
119	12669.1931	10710.0099	0.0000	radius
120	12706.5778	10708.3835	448.9200	back curb
121	12735.7102	10707.1161	449.1400	back curb
122	12735.7767	10708.6436	449.1500	back curb
123	12773.1613	10707.0172	0.0000	radius
124	12774.2380	10744.4217	449.4100	back curb
125	12672.7242	10778.5167	448.5900	back curb
126	12673.8009	10815.9212	0.0000	radius
127	12711.1855	10814.2948	449.2100	back curb
128	12711.2519	10815.8223	449.2300	back curb
129	12740.3844	10814.5549	449.6200	back curb
130	12777.7690	10812.9285	0.0000	radius
131	12776.6923	10775.5240	449.4200	back curb
132	13090.1412	10735.3285	451.1800	back curb
133	13089.0645	10697.9240	0.0000	radius
134	13126.4491	10696.2975	451.7600	back curb
135	13155.5816	10695.0301	451.9800	back curb
136	13155.6480	10696.5577	451.9500	back curb
137	13193.0327	10694.8312	0.0000	radius
138	13194.1094	10732.3357	450.7500	back curb
139	13092.5955	10766.4307	451.1800	back curb
140	13093.6722	10803.8352	0.0000	radius
141	13131.0569	10802.2088	449.9300	back curb
142	13131.1233	10803.7364	449.9000	back curb

NOTE:
 1. ALL COORDINATES ARE TO BACK OF CURB UNLESS OTHERWISE NOTED.
 2. ALL ELEVATIONS ARE TO EDGE OF PAVEMENT UNLESS OTHERSIDE SHOWN.
 3. ALL RADII 37.42' TO BACK OF CURB UNLESS OTHERWISE NOTED.

STATE OF ILLINOIS PROFESSIONAL DESIGN FIRM LICENSE NO. 184-004515

REVISIONS	DATE	NO.

© 2008 ALL RIGHTS RESERVED
CLARIDA & ZIEGLER ENGINEERING CO.
 308 South Court St, P.O. Box 937
 Marion, Illinois 62959
 Phone - (618)993-6411, Fax - (618)993-6750

INTERSECTION STAKEOUT AND GRADING
 FAIR STREET WIDENING
 MARION, ILLINOIS

Date 2/26/08 DR By TW CK'D By HGC
 Scale 1"=20' Job No. 05142 Sheet No. 44 of 53