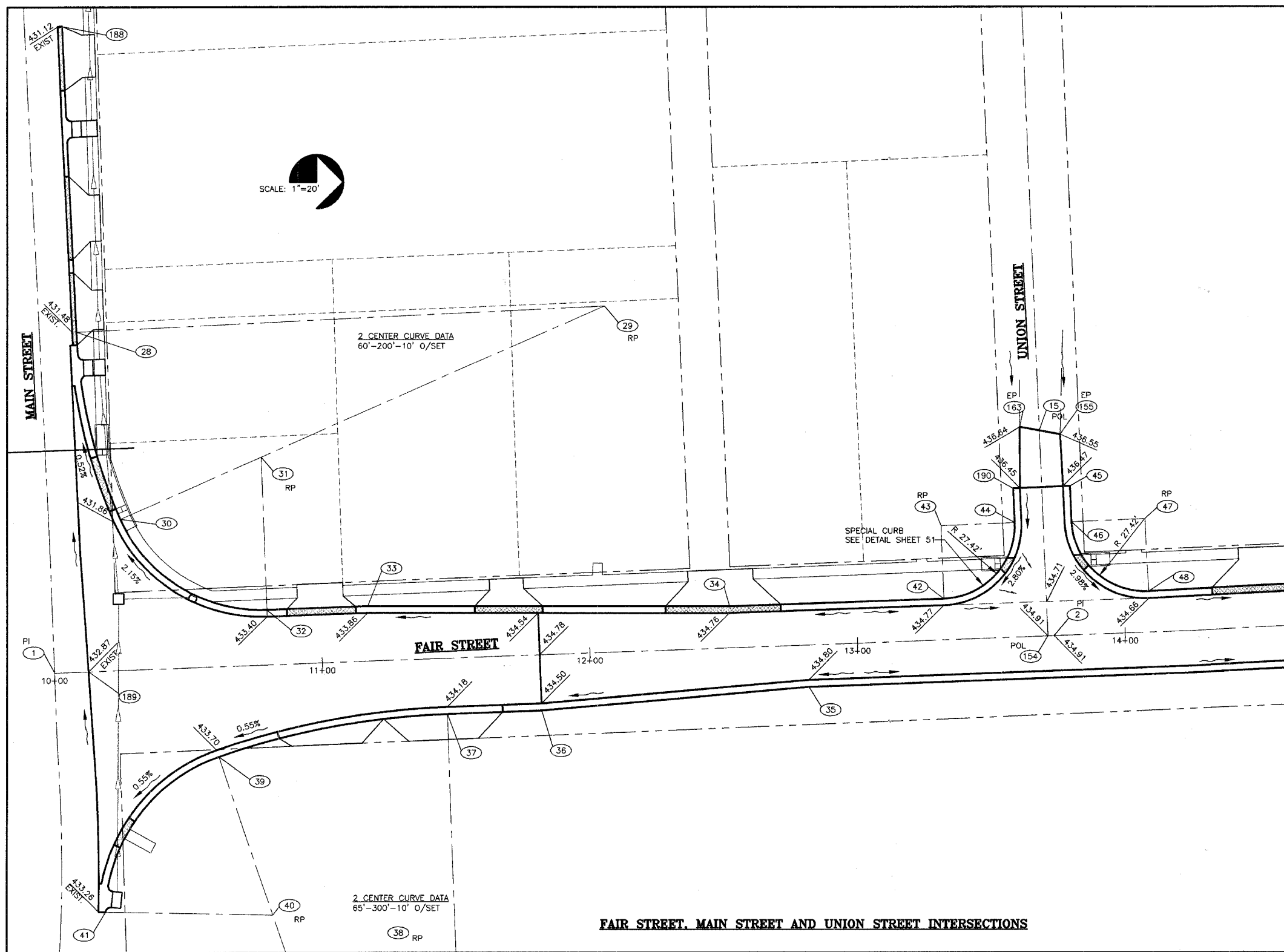


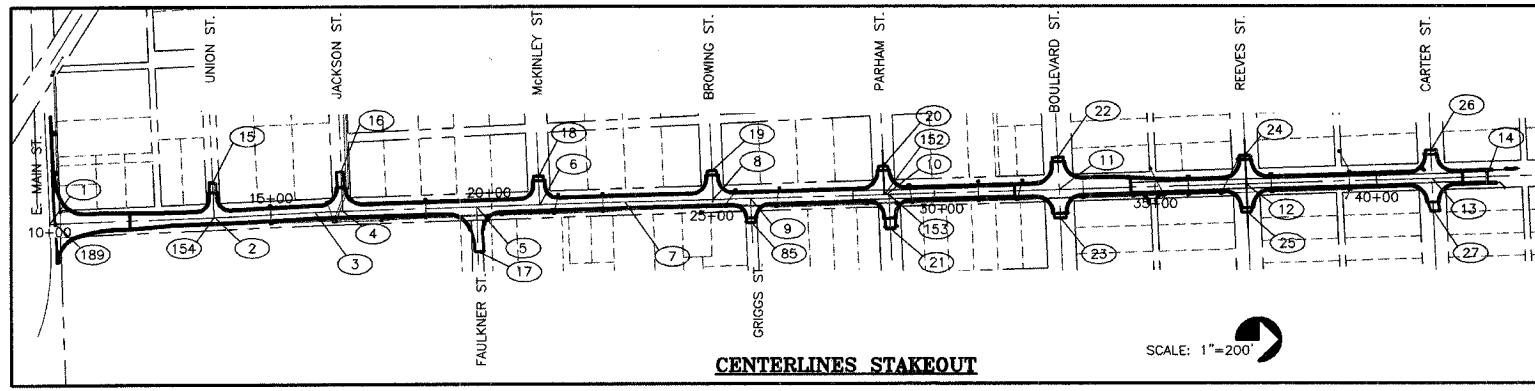
CONTRACT NO. 99309



FAIR STREET, MAIN STREET AND UNION STREET INTERSECTIONS

| NODE | NORTHING   | EASTING    | I.E.     | DESCRIPTION        |
|------|------------|------------|----------|--------------------|
| 1    | 10019.4918 | 10846.0199 | 0.0000   | cl main & fair sts |
| 2    | 10392.6654 | 10832.3307 | 434.9100 | cl                 |
| 3    | 10618.9675 | 10821.5076 | 433.0900 | cl                 |
| 4    | 10681.5898 | 10819.6136 | 432.8600 | cl jackson st      |
| 5    | 10984.0569 | 10810.4658 | 436.9100 | cl fulkner st      |
| 6    | 11126.5353 | 10806.1566 | 438.4700 | cl mckinley st     |
| 7    | 11318.6817 | 10800.3453 | 437.5800 | cl                 |
| 8    | 11518.2089 | 10795.4719 | 439.8900 | cl browning st     |
| 9    | 11602.8729 | 10793.1288 | 440.8700 | cl griggs st       |
| 10   | 11910.2336 | 10784.6654 | 443.7000 | cl                 |
| 11   | 11123.7666 | 10773.6415 | 444.9800 | cl boulevard st    |
| 12   | 12723.4811 | 10761.4692 | 448.8400 | cl reeves st       |
| 13   | 13143.3524 | 10749.3832 | 450.9400 | cl carter st       |
| 14   | 13267.8934 | 10745.7983 | 449.7500 | cl end project     |
| 15   | 10387.1258 | 10755.3761 | 0.0000   | cl union st        |
| 16   | 10677.9032 | 10731.9099 | 0.0000   | cl jackson st      |
| 17   | 10987.1192 | 10697.6541 | 0.0000   | cl fulkner st      |
| 18   | 11123.7666 | 10742.5158 | 0.0000   | cl mckinley st     |
| 19   | 11515.4271 | 10731.5316 | 0.0000   | cl browning st     |
| 20   | 11902.6445 | 10721.0221 | 0.0000   | cl w parham st     |
| 21   | 11919.1238 | 10862.1057 | 0.0000   | cl e parham st     |
| 22   | 12297.4684 | 10701.4847 | 0.0000   | cl w boulevard st  |
| 23   | 12303.3863 | 10637.3807 | 0.0000   | cl e boulevard st  |
| 24   | 12720.7093 | 10697.7592 | 0.0000   | cl w reeves st     |
| 25   | 12726.2528 | 10823.1792 | 0.0000   | cl e reeves st     |
| 26   | 13140.5807 | 10685.6733 | 0.0000   | cl w carter st     |
| 27   | 13146.5588 | 10823.0838 | 0.0000   | cl e carter st     |
| 28   | 10027.5558 | 10718.5474 | 431.5400 | back curb          |
| 29   | 10224.7370 | 10708.8395 | 0.0000   | radius             |
| 30   | 10043.8644 | 10788.2319 | 432.2400 | back curb          |
| 31   | 10096.5566 | 10785.1405 | 0.0000   | radius             |
| 32   | 10098.6616 | 10822.5219 | 443.7800 | back curb          |
| 33   | 10136.3432 | 10821.1396 | 434.2400 | back curb          |
| 34   | 10271.4357 | 10821.1874 | 435.1400 | back curb          |
| 35   | 10301.1658 | 10851.2777 | 435.1800 | back curb          |
| 36   | 10201.4164 | 10859.9402 | 434.8800 | back curb          |
| 37   | 10166.1187 | 10861.2350 | 434.5600 | back curb          |
| 38   | 10177.0217 | 11158.4551 | 0.0000   | radius             |
| 39   | 10080.8021 | 10877.0294 | 434.0800 | back curb          |
| 40   | 10100.9958 | 10936.0927 | 0.0000   | radius             |
| 41   | 10038.5947 | 10934.8584 | 433.6400 | back curb          |
| 42   | 10351.4983 | 10818.3593 | 435.1500 | back curb          |
| 43   | 10350.4891 | 10790.8490 | 0.0000   | radius             |
| 44   | 10377.9937 | 10789.6928 | 436.4700 | back curb          |
| 45   | 10398.5976 | 10778.0189 | 436.8500 | back curb          |
| 46   | 10399.1983 | 10789.4354 | 436.4500 | back curb          |
| 47   | 10426.5427 | 10788.2860 | 0.0000   | radius             |
| 48   | 10427.9397 | 10815.6189 | 435.0400 | back curb          |
| 49   | 10629.9263 | 10805.6234 | 433.1500 | back curb          |
| 50   | 10628.7851 | 10768.2205 | 0.0000   | radius             |
| 51   | 10666.1821 | 10766.6489 | 433.1800 | back curb          |
| 52   | 10667.2726 | 10732.3568 | 432.4600 | edge pavement      |
| 53   | 10683.1029 | 10731.6913 | 432.1300 | edge pavement      |
| 54   | 10687.3234 | 10765.7602 | 432.4600 | back curb          |
| 55   | 10689.4576 | 10777.7329 | 432.6700 | back curb          |
| 56   | 10724.7577 | 10765.3187 | 0.0000   | radius             |
| 57   | 10725.8891 | 10802.7210 | 433.4800 | back curb          |
| 58   | 10917.6228 | 10828.0621 | 436.1600 | back curb          |
| 59   | 10919.2074 | 10880.4582 | 0.0000   | radius             |
| 60   | 10968.6748 | 10863.1137 | 438.2300 | back curb          |
| 61   | 10999.8646 | 10863.0119 | 438.8800 | back curb          |
| 62   | 11037.2675 | 10861.8807 | 0.0000   | radius             |
| 63   | 11036.1363 | 10824.4778 | 437.8200 | back curb          |
| 64   | 11083.2575 | 10791.8698 | 438.4600 | back curb          |
| 65   | 11082.4263 | 10764.4625 | 0.0000   | radius             |
| 66   | 11109.8412 | 10763.9368 | 437.5300 | back curb          |
| 67   | 11138.7674 | 10751.8726 | 437.2100 | back curb          |
| 68   | 11139.2559 | 10763.1013 | 437.4400 | back curb          |
| 69   | 11166.6500 | 10761.9095 | 0.0000   | radius             |
| 70   | 11167.4764 | 10789.3171 | 438.3900 | back curb          |
| 71   | 11469.9193 | 10781.0667 | 439.5200 | back curb          |

NOTE:  
 1. ALL COORDINATES ARE TO BACK OF CURB UNLESS OTHERWISE NOTED.  
 2. ALL ELEVATIONS ARE TO EDGE OF PAVEMENT UNLESS OTHERWISE SHOWN.  
 3. ALL RADII 37.42' TO BACK OF CURB UNLESS OTHERWISE NOTED.



CENTERLINES STAKEOUT

| CENTERLINE COORDINATES |          |         |          |          |     |          |          |          |          |
|------------------------|----------|---------|----------|----------|-----|----------|----------|----------|----------|
| NO.                    | STATION  | OFFSET  | NORTHING | EASTING  | NO. | STATION  | OFFSET   | NORTHING | EASTING  |
| 1                      | 10+00.00 | 0.00 R  | 10019.49 | 10846.02 | 17  | 19+65.25 | 101.23 R | 10987.12 | 10911.65 |
| 2                      | 13+73.42 | 0.00 R  | 10392.67 | 10832.33 | 18  | 21+06.95 | 63.70 L  | 11123.77 | 10742.52 |
| 3                      | 15+99.99 | 0.00 R  | 10618.97 | 10821.51 | 19  | 24+98.39 | 63.99 L  | 11515.43 | 10731.53 |
| 4                      | 16+62.64 | 0.00 R  | 10681.59 | 10819.61 | 20  | 28+85.95 | 63.83 L  | 11902.64 | 10721.02 |
| 5                      | 19+65.25 | 0.00 R  | 10984.06 | 10810.47 | 21  | 28+98.48 | 77.66 R  | 11919.12 | 10862.11 |
| 6                      | 21+07.79 | 0.00 R  | 11126.54 | 10806.16 | 22  | 32+81.21 | 72.22 L  | 12297.47 | 10701.48 |
| 7                      | 23+00.02 | 0.00 R  | 11318.68 | 10800.35 | 23  | 32+83.26 | 63.79 R  | 12303.39 | 10837.38 |
| 8                      | 24+99.61 | 0.00 R  | 11518.21 | 10795.47 | 24  | 37+04.42 | 63.76 L  | 12720.71 | 10697.76 |
| 9                      | 25+84.31 | 0.00 R  | 11602.87 | 10793.13 | 25  | 37+06.30 | 63.76 R  | 12726.25 | 10825.18 |
| 10                     | 28+91.78 | 0.00 R  | 11910.23 | 10784.67 | 26  | 41+24.47 | 63.76 L  | 13140.58 | 10685.67 |
| 11                     | 32+82.32 | 0.00 R  | 12300.61 | 10773.64 | 27  | 41+26.49 | 73.76 R  | 13146.56 | 10823.08 |
| 12                     | 37+05.36 | 0.00 R  | 12723.48 | 10761.47 | 152 | 28+86.97 | 0.00 R   | 11905.42 | 10784.80 |
| 13                     | 41+25.41 | 0.00 R  | 13143.35 | 10749.38 | 153 | 28+97.30 | 0.00 R   | 11915.75 | 10784.51 |
| 14                     | 42+50.00 | 0.00 R  | 13267.89 | 10745.80 | 154 | 13+71.12 | 0.00 R   | 10390.36 | 10832.42 |
| 15                     | 13+70.71 | 77.11 L | 10387.13 | 10755.38 | 189 | 10+12.71 | 0.00 R   | 10032.19 | 10845.55 |
| 16                     | 16+61.61 | 87.78 L | 10677.90 | 10731.91 |     |          |          |          |          |

STATE OF ILLINOIS PROFESSIONAL DESIGN FIRM LICENSE NO. 184-004515

REVISIONS

| DATE | NO. |
|------|-----|
|      |     |

CLARIDA & ZIEGLER  
 ENGINEERING CO.  
 308 South Court St., P.O. Box 937  
 Marion, Illinois 62959  
 Phone - (618)993-6411, Fax - (618)993-6750

INTERSECTION STAKEOUT AND GRADING  
 FAIR STREET WIDENING  
 MARION, ILLINOIS

Date: 2/26/08 DR. By: TW CK'D By: HGC  
 Scale: 1"=20' Job No. 05142 Sheet No. 43 of 53

P:\05142\PLANS\3-45 STAKEOUT.dwg, 4/9/2008 5:44:08 AM, 1:1