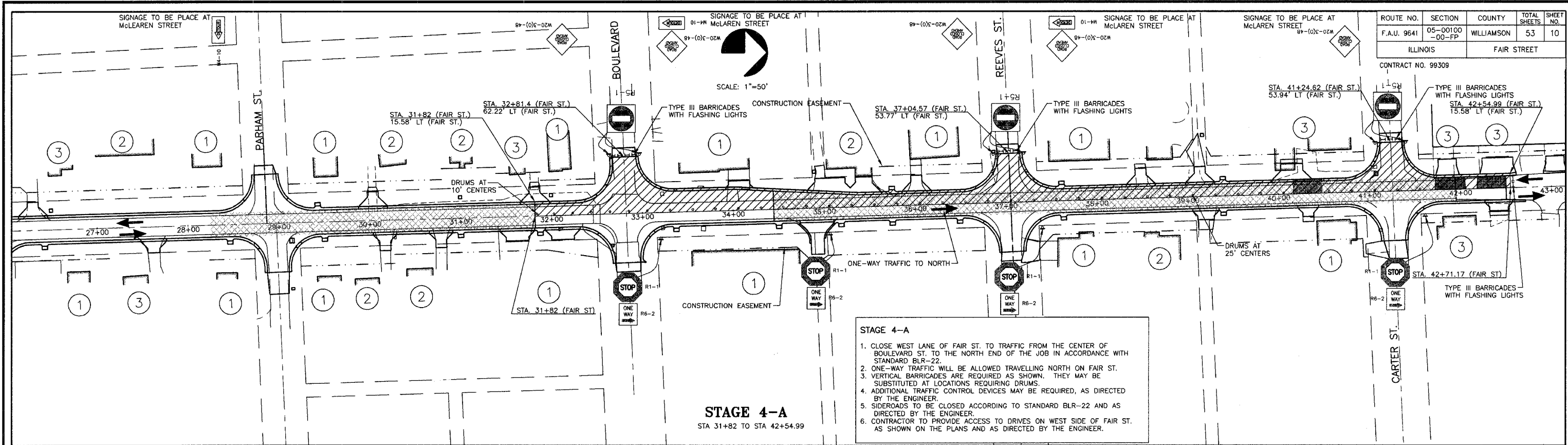


ROUTE NO.	SECTION	COUNTY	TOTAL SHEETS	SHEET NO.
F.A.U. 9641	05-00100-00-FP	WILLIAMSON	53	10

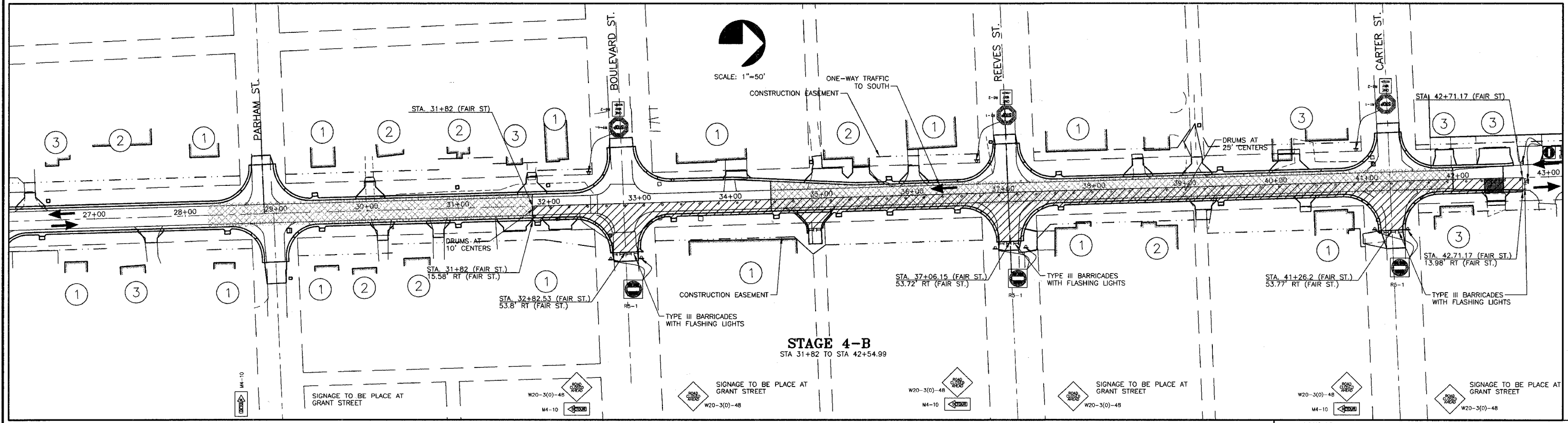
ILLINOIS FAIR STREET

CONTRACT NO. 99309



STAGE 4-A
STA 31+82 TO STA 42+54.99

1. CLOSE WEST LANE OF FAIR ST. TO TRAFFIC FROM THE CENTER OF BOULEVARD ST. TO THE NORTH END OF THE JOB IN ACCORDANCE WITH STANDARD BLR-22.
2. ONE-WAY TRAFFIC WILL BE ALLOWED TRAVELLING NORTH ON FAIR ST.
3. VERTICAL BARRICADES ARE REQUIRED AS SHOWN. THEY MAY BE SUBSTITUTED AT LOCATIONS REQUIRING DRUMS.
4. ADDITIONAL TRAFFIC CONTROL DEVICES MAY BE REQUIRED, AS DIRECTED BY THE ENGINEER.
5. SIDEROADS TO BE CLOSED ACCORDING TO STANDARD BLR-22 AND AS DIRECTED BY THE ENGINEER.
6. CONTRACTOR TO PROVIDE ACCESS TO DRIVES ON WEST SIDE OF FAIR ST. AS SHOWN ON THE PLANS AND AS DIRECTED BY THE ENGINEER.



STAGE 4-B
STA 31+82 TO STA 42+54.99

1. CLOSE EAST LANE OF FAIR ST. TO TRAFFIC FROM THE CENTER OF BOULEVARD ST. TO THE NORTH END OF THE JOB IN ACCORDANCE WITH STANDARD BLR-22.
2. ONE-WAY TRAFFIC WILL BE ALLOWED TRAVELLING SOUTH ON FAIR ST.
3. VERTICAL BARRICADES ARE REQUIRED AS SHOWN. THEY MAY BE SUBSTITUTED AT LOCATIONS REQUIRING DRUMS.
4. ADDITIONAL TRAFFIC CONTROL DEVICES MAY BE REQUIRED, AS DIRECTED BY THE ENGINEER.
5. SIDEROADS TO BE CLOSED ACCORDING TO STANDARD BLR-22 AND AS DIRECTED BY THE ENGINEER.
6. CONTRACTOR TO PROVIDE ACCESS TO DRIVES ON EAST SIDE OF FAIR ST. AS SHOWN ON THE PLANS AND AS DIRECTED BY THE ENGINEER.

LEGEND

①	HAS ACCESS FROM SIDE STREET DURING CONSTRUCTION.
②	HAS ACCESS FROM REAR ALLEY DURING CONSTRUCTION.
③	HAS ACCESS FROM STREET ONLY.
	STAGING AREA
	TEMPORARY GRAVEL ACCESS
	AREA FOR WIDENING ONLY

STATE OF ILLINOIS PROFESSIONAL DESIGN FIRM LICENSE NO. 184-004515

REVISIONS	
DATE	NO.

CLARIDA & ZIEGLER ENGINEERING CO.
308 South Court St., P.O. Box 937
Marion, Illinois 62959
Phone - (618)993-6411, Fax - (618)993-6750

**STAGING PLAN
FAIR STREET WIDENING
MARION, ILLINOIS**

Date 2/26/08 DR. By P.L.D. CK'D By H.C.G.
Scale 1"=50' Job No. 05142 Sheet No. 10 of 53