

DETOUR ROUTE

NORTH BOUND
FROM COUNTY HIGHWAY 12 SOUTH OF VENEY,
TURN EAST ON COUNTY HIGHWAY 6 AT CATTLE
PEN ROAD AND CONTINUE UNTIL COUNTY
HIGHWAY 6. TURN WEST ON COUNTY HIGHWAY 6.
AT COUNTY HIGHWAY 12 TURN SOUTH. END OF
DETOUR.

SOUTH BOUND
FROM IL-177/IL-160 TURN SOUTH ON CATTLE
PEN ROAD AND CONTINUE UNTIL COUNTY
HIGHWAY 6. TURN WEST ON COUNTY HIGHWAY 6.
AT COUNTY HIGHWAY 12 TURN SOUTH. END OF
DETOUR.

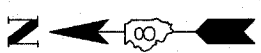
NOTES

- DETOUR PLAN IS FOR USE DURING INTERSECTION RECONSTRUCTION AND BRIDGE WORK ONLY. ALL OTHER WORK SHALL BE

PERFORMED USING THE APPLICABLE TRAFFIC CONTROL AND PROTECTION STANDARDS.

- PLACE ALL SIGNS AND BARRICADES ACCORDING TO IDOT STANDARDS UNLESS OTHERWISE NOTED BY THE ENGINEER.
- DETOUR SIGNAGE PLACEMENT SHALL BE COORDINATED WITH CONSTRUCTION SIGNAGE TO AVOID CONFLICTING PLACEMENT. FINAL PLACEMENT SHALL BE AS DIRECTED BY THE ENGINEER.
- THREE CHANGEABLE MESSAGE BOARDS TO BE PLACED ONE WEEK PRIOR TO ROAD CLOSURE, AND SHALL REMAIN IN PLACE FOR THE DURATION OF THE CLOSURE.

- W20-3
- M4-9L
- M4-9R
- W20-1
- M4-9R
- M4-10R
- M4-10L
- W20-2



N.T.S.

PREPARED BY:



Kaskaskia Engineering Group L.L.C.
23 Public Square Suite 404
Belleville, Illinois 62220
Office: (618) 233-5877 Fax: (618) 233-5977
www.kaskaskiaeng.com

PROFESSIONAL REGISTRATIONS LICENSE NO. 18-040775
ILLINOIS PROFESSIONAL DESIGN FIRM 20-300086
A Disadvantaged Business Enterprise

REV	DATE	DESCRIPTION
△	XX/XX/XX	XXXXXXXX
△	XX/XX/XX	XXXXXXXX

DETOUR PLAN

PROJECT TITLE: COUNTY HIGHWAY 12 (F.A.S. 833)
SECTION 06-00080-00-RS
RESURFACING & REHABILITATION
WASHINGTON COUNTY, ILLINOIS

DESIGNED BY:	CHA	SHEET
DRAWN BY:	CHA	39
CHECKED BY:	TJM	
DATE OF PRELIMINARY:	11/20/2007	
DATE OF FINAL:	12/28/2007	
SHEET NO.	32 OF 94 SHEETS	
PROJECT NUMBER	06-0032	