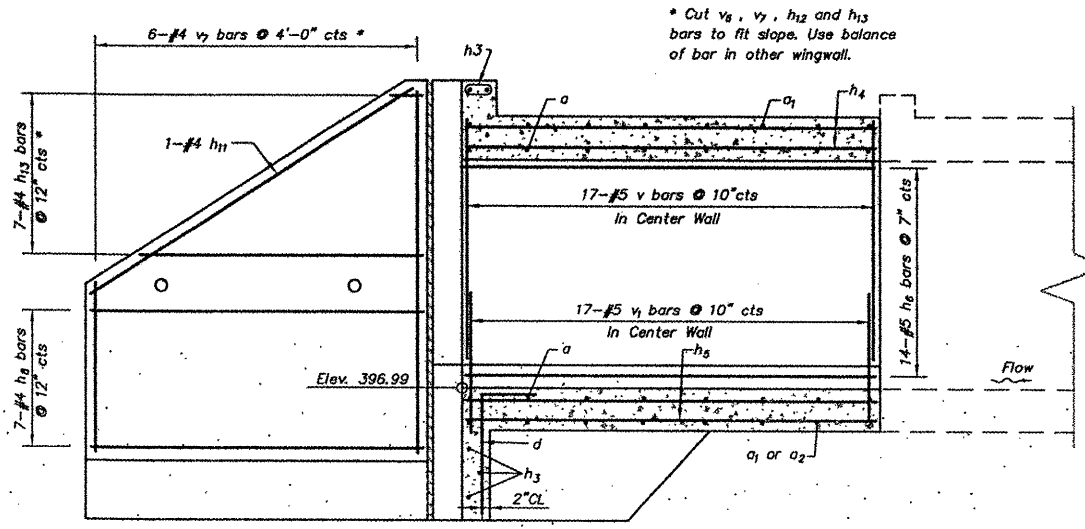


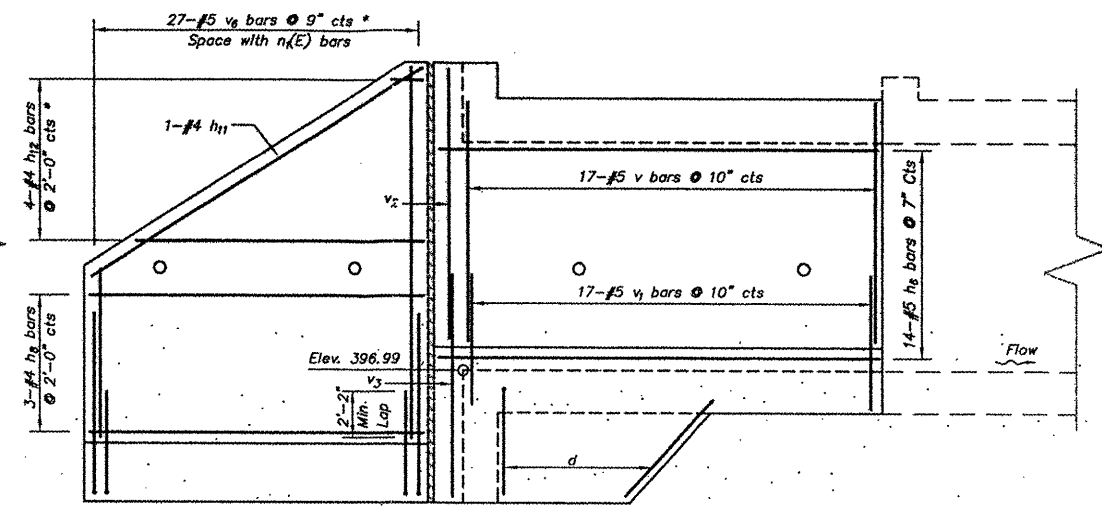
STATE OF ILLINOIS  
DEPARTMENT OF TRANSPORTATION

ROUTE NO.	SECTION	COUNTY	TOTAL SHEETS	SHEET NO.
-	99-00009 -01-FP	ST. CLAIR		78
FED. ROAD DIST. NO. 8		ILLINOIS	FED. AID PROJECT- 98-089-97	
CULVERT STRUCTURAL				



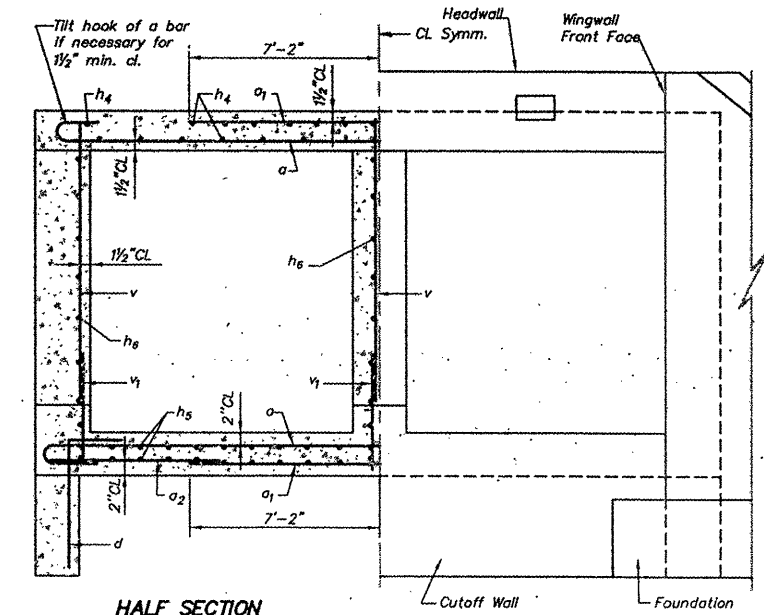
REINFORCEMENT  
FRONT FACE

PART SECTION  
(Showing Bars in Center Wall)



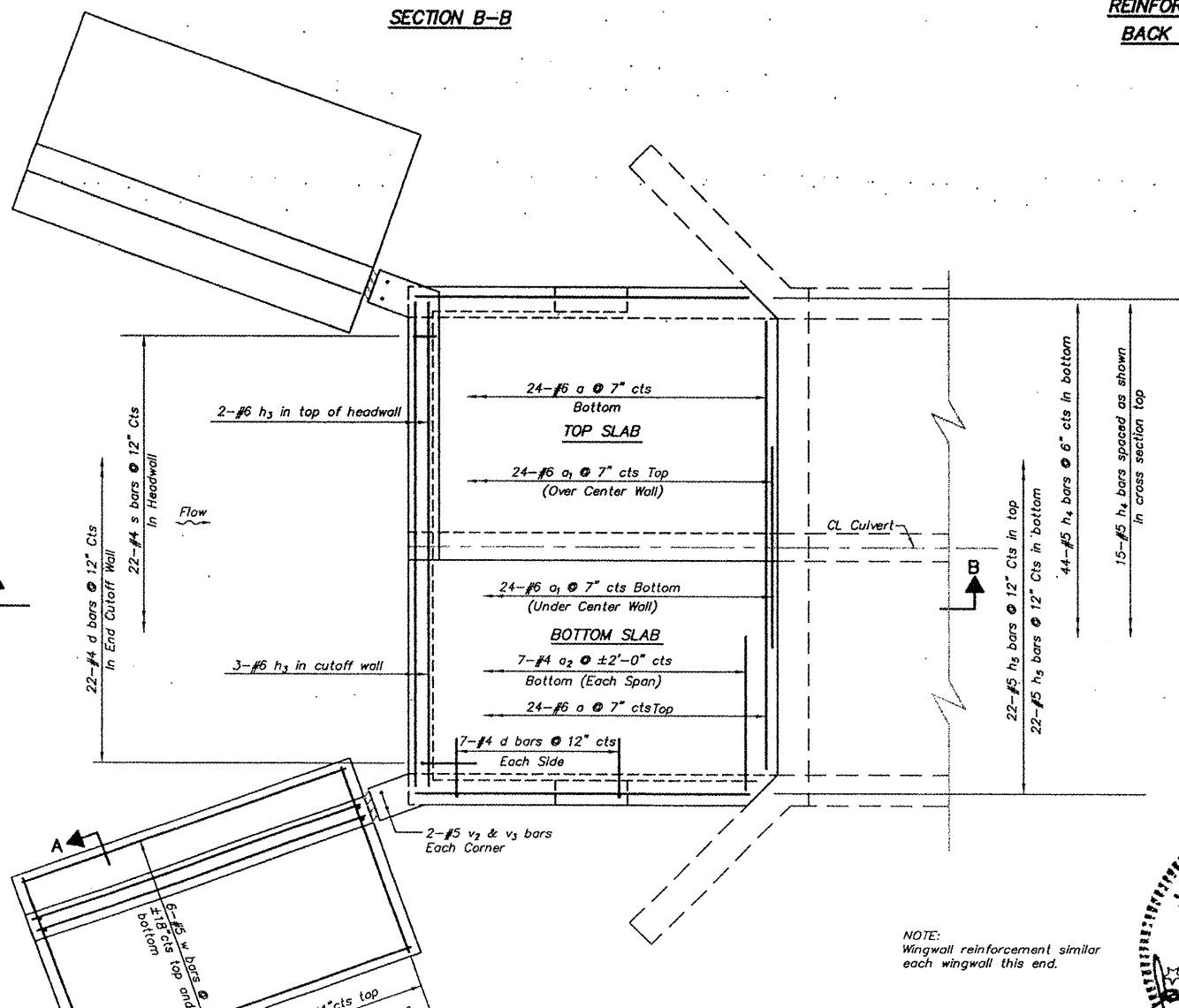
REINFORCEMENT  
BACK FACE

PART ELEVATION  
(Showing bars in Outside Wall)



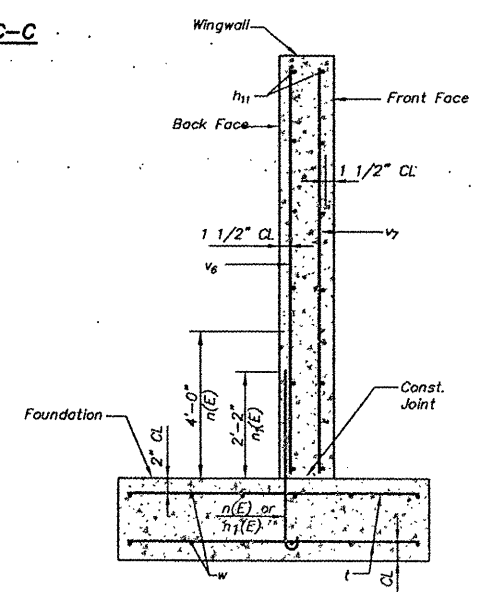
HALF SECTION  
THRU BARREL  
(Showing Reinforcement)

HALF END ELEVATION

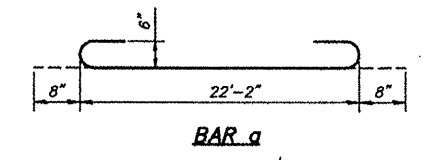


PART PLAN  
(Showing Reinforcement)

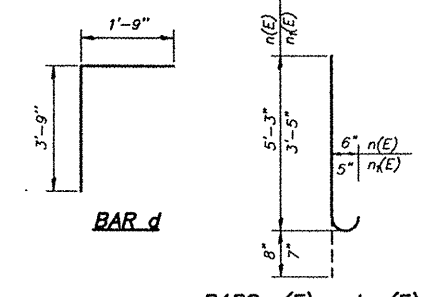
ELEVATION C-C



SECTION A-A



BAR a

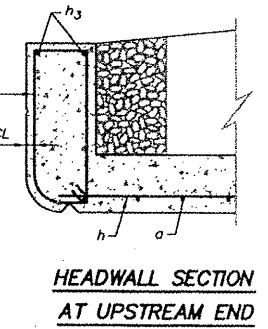
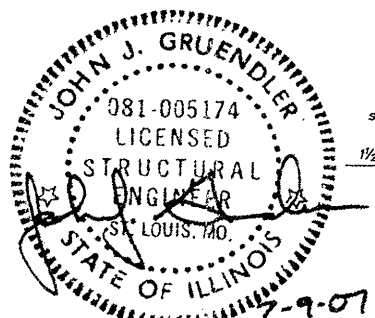


BAR d

BARS n(E) and n1(E)

Notes:  
Reinforcement bars designated (E) shall be epoxy coated. Bars indicated thus 12x4-#5 etc. indicates 12 lines of bars with 4 lengths per line.

BILL OF MATERIAL				
Bar	No.	Size	Length	Shape
a	48	#6	23'-6"	U
a1	48	#6	14'-4"	U
a2	14	#4	5'-7"	U
d	36	#4	5'-6"	U
h3	5	#6	22'-2"	U
h4	59	#5	13'-8"	U
h5	44	#5	13'-8"	U
h6	42	#5	13'-8"	U
h8	20	#4	20'-11"	U
h11	4	#4	21'-3"	U
h12	4	#4	22'-2"	U
h13	7	#4	20'-10"	U
n(E)	56	#6	5'-11"	U
n1(E)	54	#5	4'-0"	U
s	22	#4	7'-5"	U
t	88	#5	7'-8"	U
v	51	#5	8'-4"	U
v1	51	#5	2'-11"	U
v2	4	#5	10'-3"	U
v3	4	#5	5'-11"	U
v6	27	#5	20'-4"	U
v7	6	#4	20'-3"	U
w	24	#5	20'-11"	U
Concrete Box Culverts			Cu. Yd.	70.8
Reinforcement bars, Epoxy Coated			Pound	720
Reinforcement bars			Pound	8290



HEADWALL SECTION  
AT UPSTREAM END

DESIGNED	*	200
CHECKED	*	EXAMINED
DRAWN	PES	ENGINEER OF BRIDGE DESIGN
CHECKED	TPW	PASSED
		ENGINEER OF BRIDGE AND STRUCTURES

Drawings Not To Scale

T:\Clients\SAUGET\713-97-1.ph\dwg\SB-ICRR-LT.dwg, 6/27/2007 10:50:49 AM, KM-3035.pcd