

Contract # 97312

STATE OF ILLINOIS  
DEPARTMENT OF TRANSPORTATION

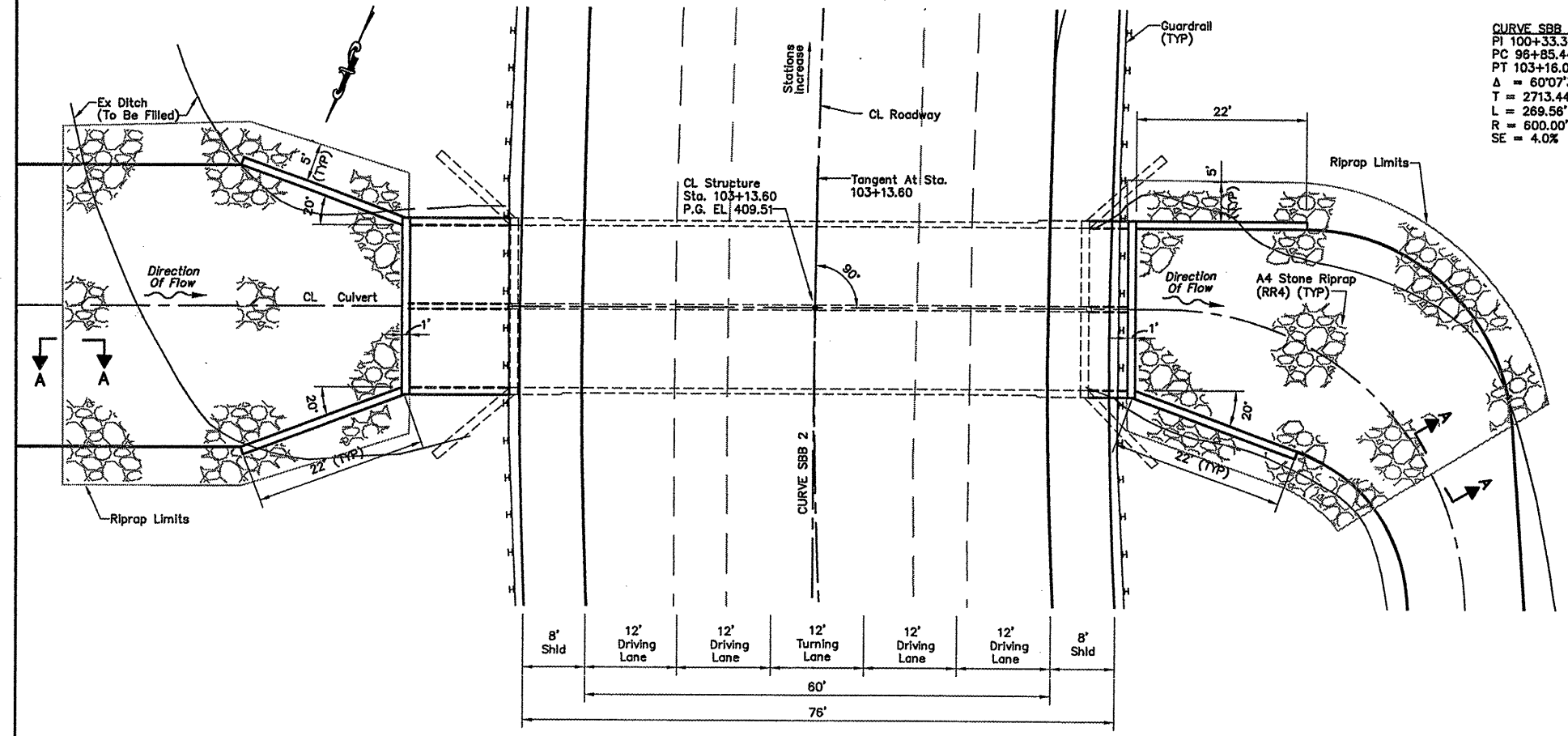
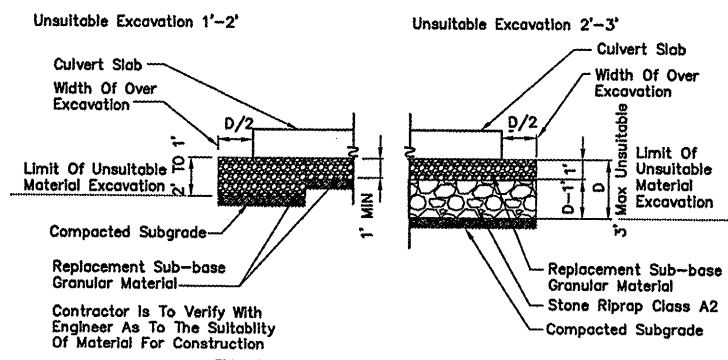
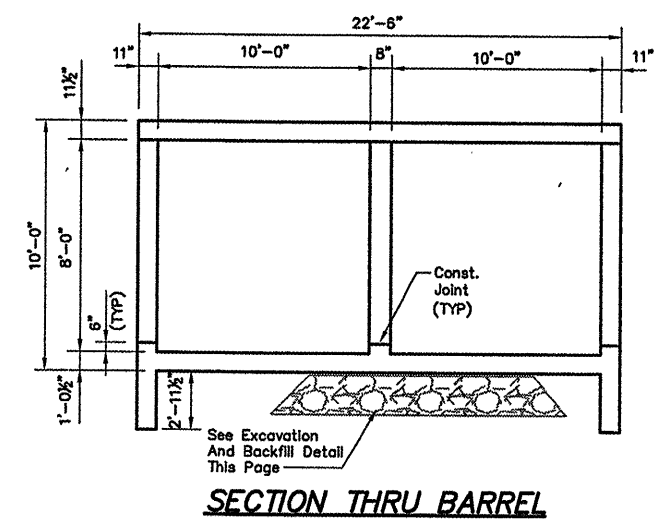
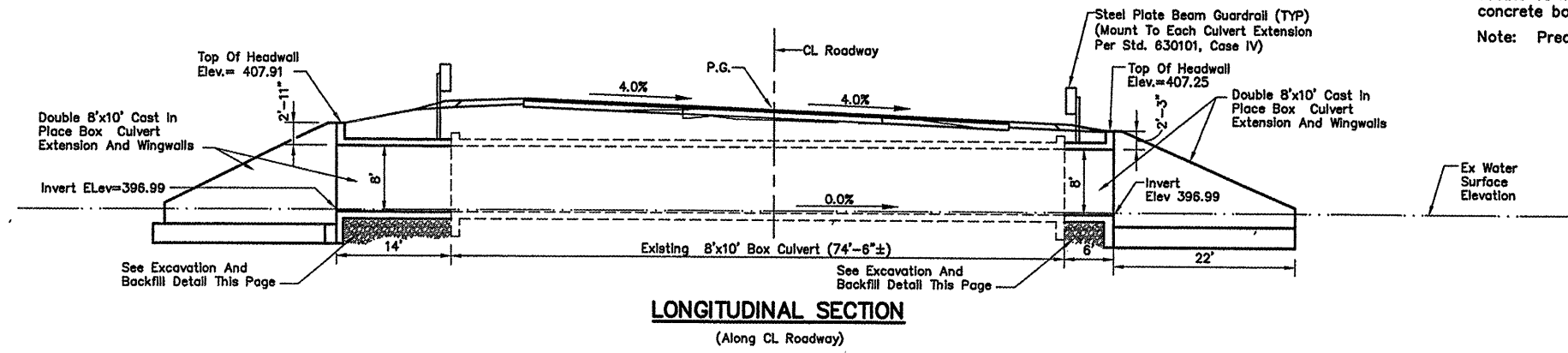
Bench Mark:  
Brass disc at Sauget Industrial Parkway  
(Elev 409.73, RT 1.15),  
Ex IP Sta 42+12.14, Rt 126.08  
(Elev 405.77)

Off shoulder development. Staged construction  
not required.  
Scour analysis indicates stable conditions.  
Stone revetment has been added for  
wingwall footing protection.  
It shall be the Contractor's responsibility  
to divert any stream flow.

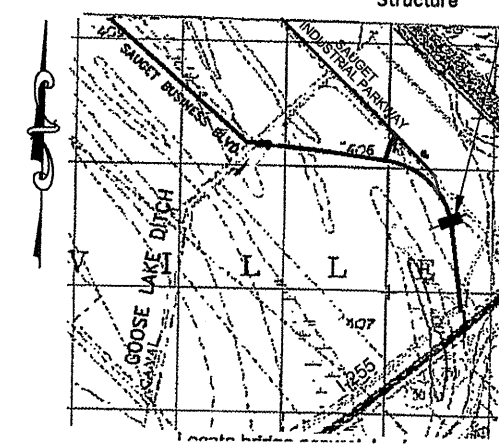
ROUTE NO.	SECTION	COUNTY	TOTAL SHEETS	SHEET NO.
FAU 9212	99-00009-01-FP	ST. CLAIR		74
FED. ROAD DIST. NO. 8		ILLINOIS	FED. AID PROJECT-	
CULVERT TS&L				

The existing structure was investigated for the presence of asbestos during the preliminary design phase and was found to NOT contain asbestos. Documentation confirming this finding was provided to the Illinois Department of Transportation at that time to clear this project for approval.

Existing Structure:  
SN082-2031 was built in 1992. It is a  
double 10'x8'H cast-in-place reinforced  
concrete box culvert.  
Note: Precast alternate not allowed.



LOCATION MAP Proposed Structure



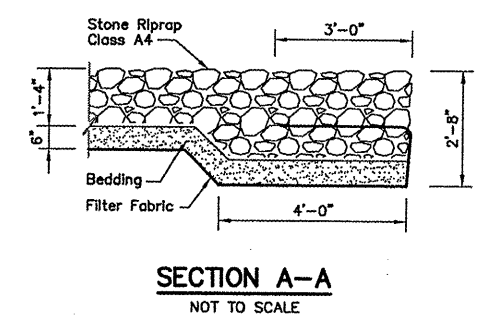
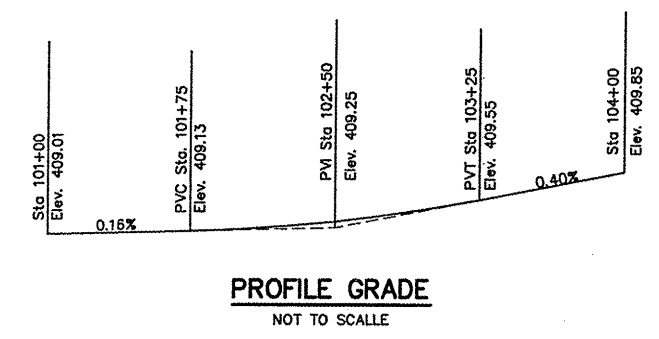
**HIGHWAY CLASSIFICATION**  
Ill. Rte. 9212  
Functional Class: Urban Collector  
ADT: (2006); 17,530  
DHV: 5,400  
Design Speed: 40 m.p.h.  
Posted Speed: 40 m.p.h.

**LOADING HS20-44**  
Allow 50#/sq. ft. for future  
wearing surface

**DESIGN SPECIFICATIONS**  
2002 AASHTO  
**DESIGN STRESSES**  
**FIELD UNITS**  
 $f_c = 3,500$  psi  
 $f_y = 60,000$  psi  
(reinforcement)

**GENERAL PLAN**  
NEW SAUGET BUSINESS BLVD.  
OVER ICRR DITCH  
F.A.U. ROUTE 9212 -SECTION  
97-00009-01-FP  
ST. CLAIR COUNTY  
STATION 103+13.60  
STRUCTURE No. 082-2031

DESIGNED	JPG
CHECKED	MJS
DRAWN	PES
CHECKED	TPW



T:\Clients\SAUGET\313-97-1 phii adwg\14-ICRR-TS&L.dwg, TS&L, 4/10/2008 10:22:19 AM, jpg, \PHW100\KM-3035, Ledger, 1:2, PHW07, PHW03