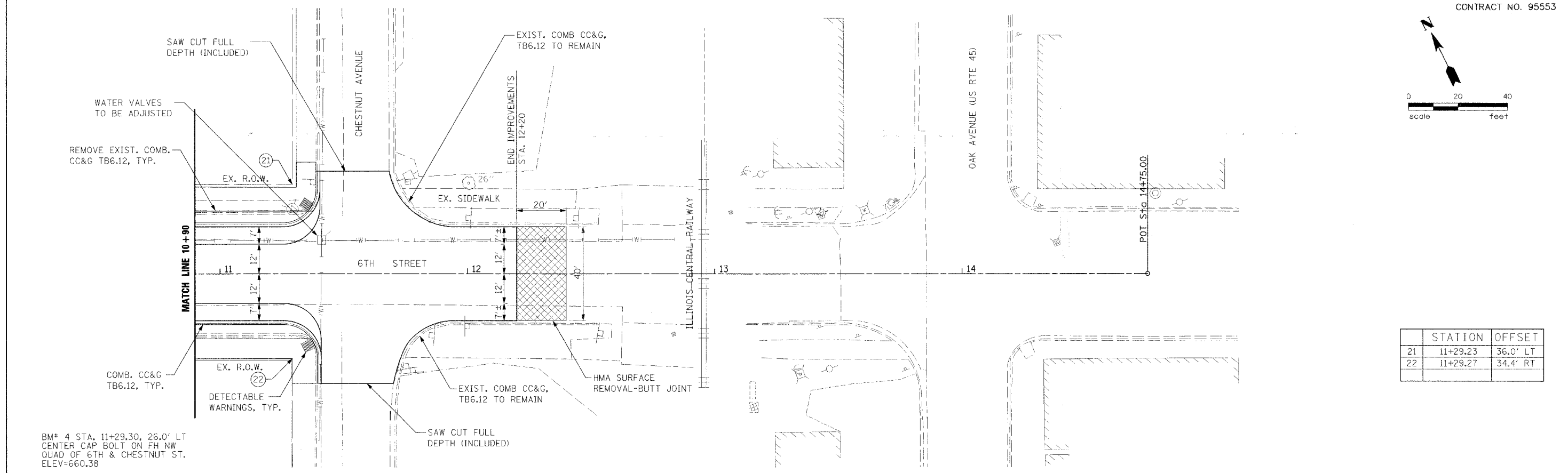


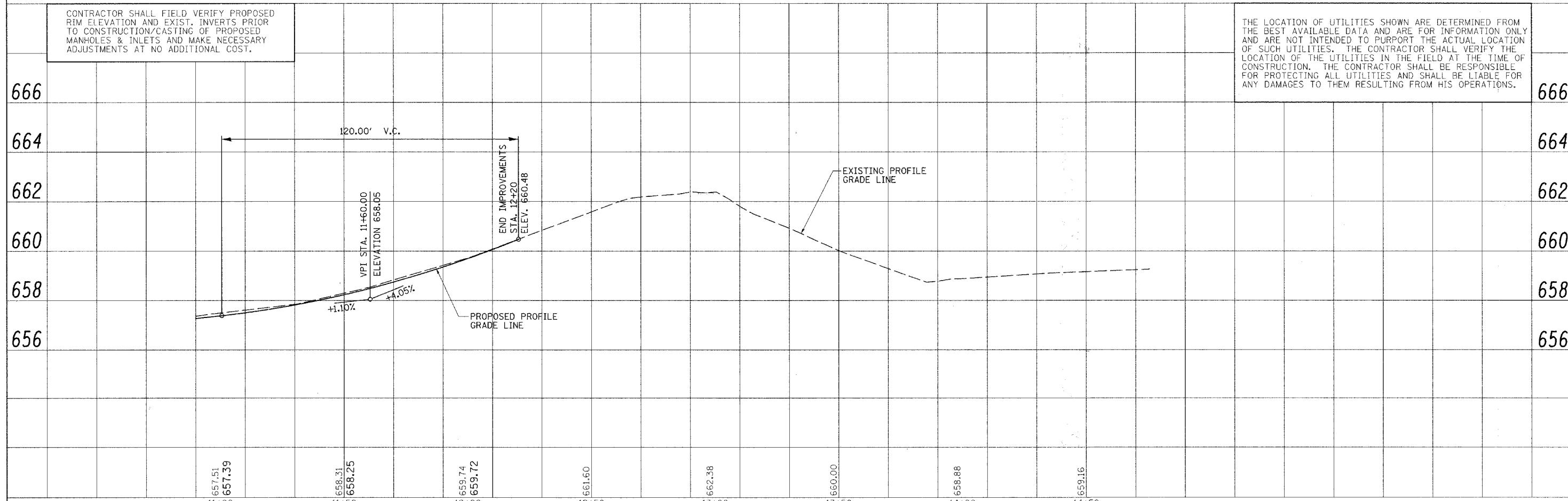
PLAN	DATE
BY	
REVISIONS	
NO.	
DATE	
BY	
REVISIONS	
NO.	
DATE	
BY	



	STATION	OFFSET
21	11+29.23	36.0' LT
22	11+29.27	34.4' RT

BM* 4 STA. 11+29.30, 26.0' LT
CENTER CAP BOLT ON FH NW
QUAD OF 6TH & CHESTNUT ST.
ELEV=660.38

PROFILE	DATE
BY	
REVISIONS	
NO.	
DATE	
BY	
REVISIONS	
NO.	
DATE	
BY	



CONTRACTOR SHALL FIELD VERIFY PROPOSED RIM ELEVATION AND EXIST. INVERTS PRIOR TO CONSTRUCTION/CASTING OF PROPOSED MANHOLES & INLETS AND MAKE NECESSARY ADJUSTMENTS AT NO ADDITIONAL COST.

THE LOCATION OF UTILITIES SHOWN ARE DETERMINED FROM THE BEST AVAILABLE DATA AND ARE FOR INFORMATION ONLY AND ARE NOT INTENDED TO PURPORT THE ACTUAL LOCATION OF SUCH UTILITIES. THE CONTRACTOR SHALL VERIFY THE LOCATION OF THE UTILITIES IN THE FIELD AT THE TIME OF CONSTRUCTION. THE CONTRACTOR SHALL BE RESPONSIBLE FOR PROTECTING ALL UTILITIES AND SHALL BE LIABLE FOR ANY DAMAGES TO THEM RESULTING FROM HIS OPERATIONS.

FILE NAME: X:\CH\1E\2007\07\09\04\CAD\PLANS\plan.prof	USER NAME: #USER#	DESIGNED: -	REVISED: -	STATE OF ILLINOIS DEPARTMENT OF TRANSPORTATION	PLAN AND PROFILE	F.A. RTE. NA	SECTION 02-00066-00-PV	COUNTY CUMBERLAND	TOTAL SHEETS 32	SHEET NO. 11	
		DRAWN: -	REVISED: -			SCALE: 1"=20'	SHEET NO. 3 - OF 3 SHEETS	STA. 10+90	TO STA. 12+20	CONTRACT NO. 95553	
		CHECKED: -	REVISED: -			FED. ROAD DIST. NO. ILLINOIS FED. AID PROJECT					
		DATE: -	REVISED: -								