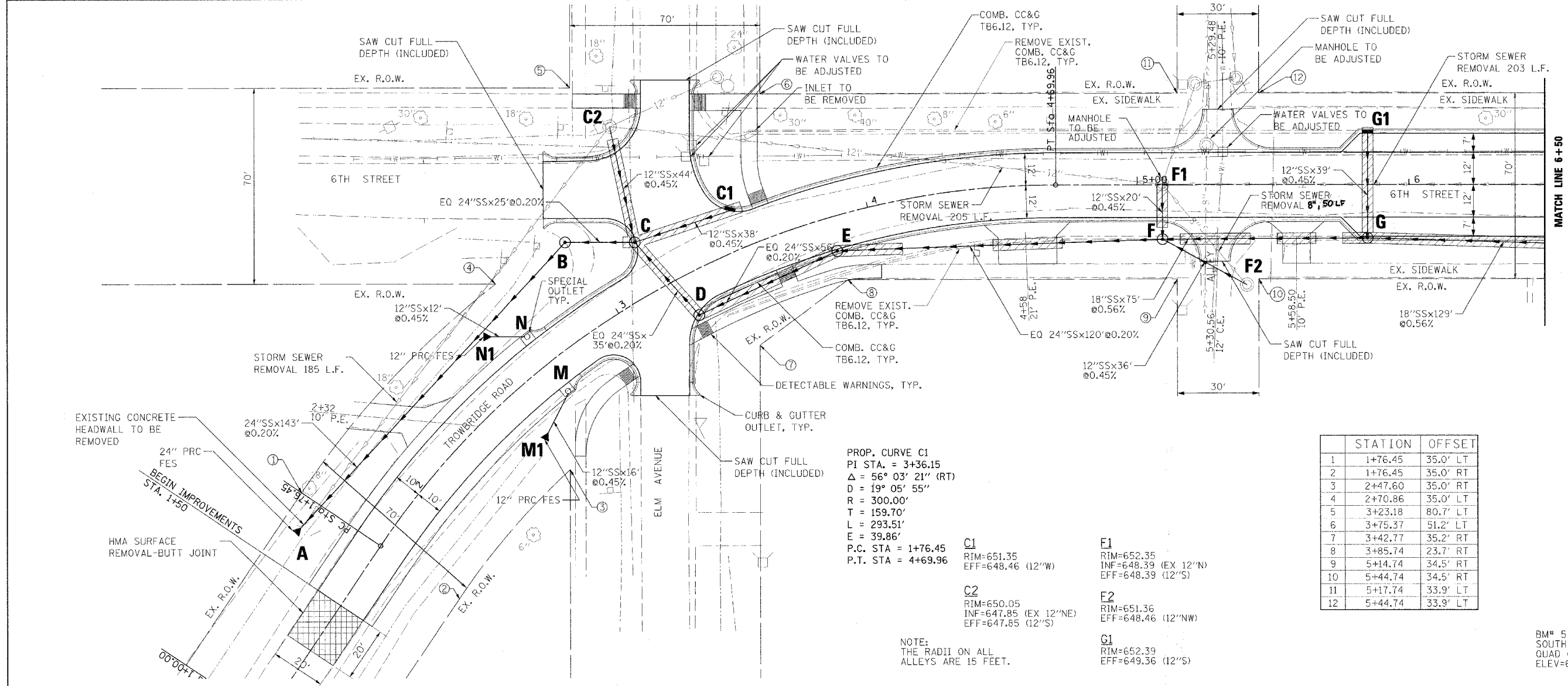


DATE	
BY	
PROJECT	
NO.	
DATE	
BY	
PROJECT	
NO.	



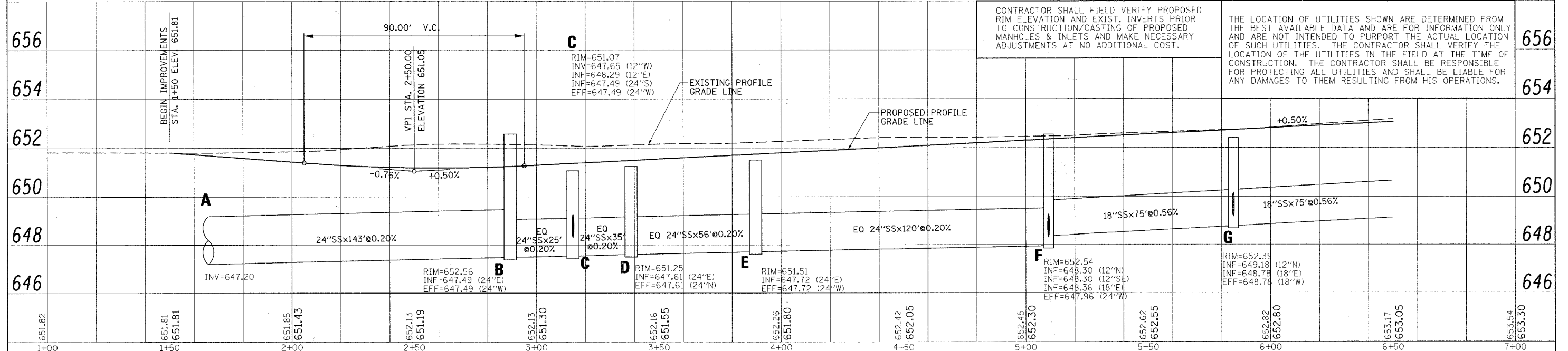
PROP. CURVE C1  
 PI STA. = 3+36.15  
 $\Delta = 56^\circ 03' 21''$  (RT)  
 $D = 19^\circ 05' 55''$   
 $R = 300.00'$   
 $T = 159.70'$   
 $L = 293.51'$   
 $E = 39.86'$   
 P.C. STA = 1+76.45  
 P.T. STA = 4+69.96

C1	RIM=651.35 INF=648.46 (12"W)	F1	RIM=652.35 INF=648.39 (EX 12"N) EFF=648.39 (12"S)
C2	RIM=650.05 INF=647.85 (EX 12"NE) EFF=647.85 (12"S)	F2	RIM=651.36 EFF=648.46 (12"NW)
		G1	RIM=652.39 EFF=649.36 (12"S)

STATION	OFFSET
1	1+76.45 35.0' LT
2	1+76.45 35.0' RT
3	2+47.60 35.0' RT
4	2+70.86 35.0' LT
5	3+23.18 80.7' LT
6	3+75.37 51.2' LT
7	3+42.77 35.2' RT
8	3+85.74 23.7' RT
9	5+14.74 34.5' RT
10	5+44.74 34.5' RT
11	5+17.74 33.9' LT
12	5+44.74 33.9' LT

BM# 5 STA. 6+98.93, 24.7' LT.  
 SOUTH CAP NUT ON FH NW  
 QUAD OF 6TH & WALNUT ST.  
 ELEV=655.68

DATE	
BY	
PROJECT	
NO.	
DATE	
BY	
PROJECT	
NO.	



CONTRACTOR SHALL FIELD VERIFY PROPOSED RIM ELEVATION AND EXIST. INVERTS PRIOR TO CONSTRUCTION/CASTING OF PROPOSED MANHOLES & INLETS AND MAKE NECESSARY ADJUSTMENTS AT NO ADDITIONAL COST.

THE LOCATION OF UTILITIES SHOWN ARE DETERMINED FROM THE BEST AVAILABLE DATA AND ARE FOR INFORMATION ONLY AND ARE NOT INTENDED TO PURPORT THE ACTUAL LOCATION OF SUCH UTILITIES. THE CONTRACTOR SHALL VERIFY THE LOCATION OF THE UTILITIES IN THE FIELD AT THE TIME OF CONSTRUCTION. THE CONTRACTOR SHALL BE RESPONSIBLE FOR PROTECTING ALL UTILITIES AND SHALL BE LIABLE FOR ANY DAMAGES TO THEM RESULTING FROM HIS OPERATIONS.