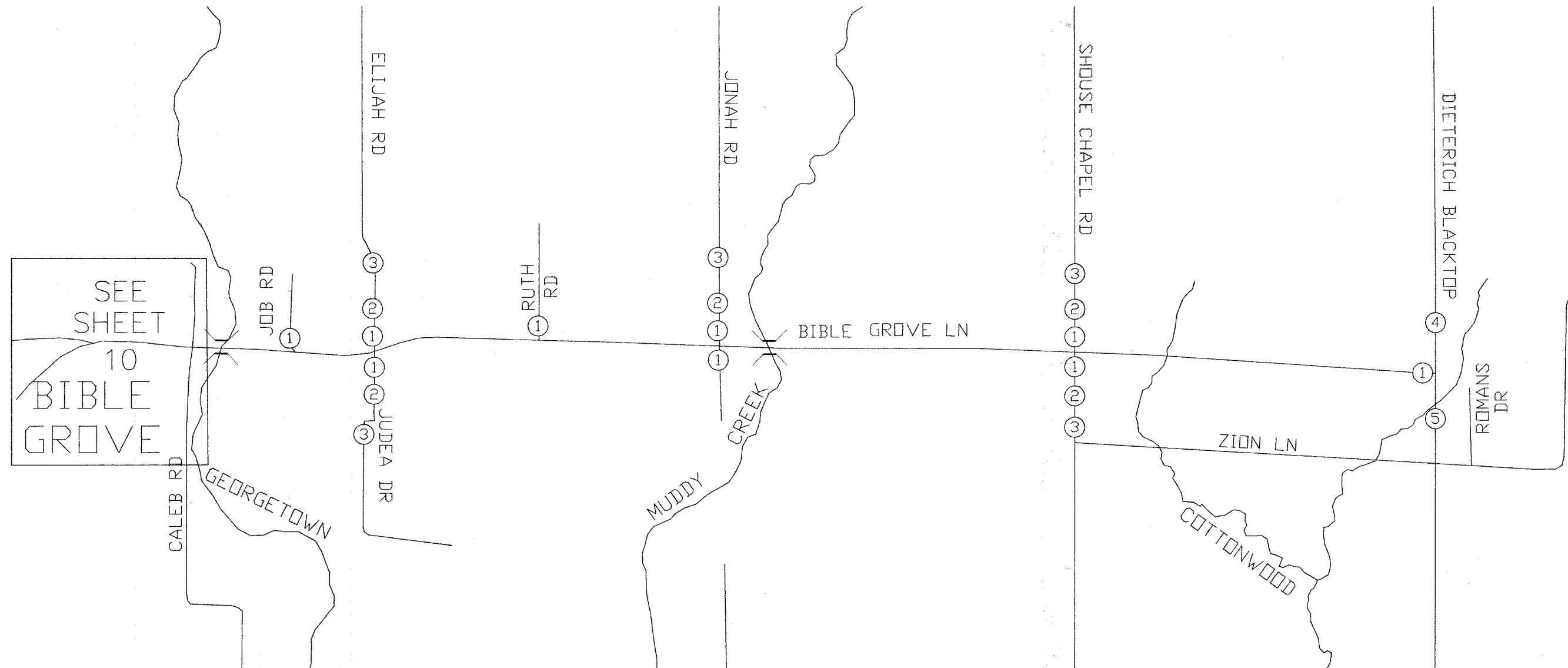


ROUTE	SECTION	COUNTY	SHEET NO.	TOTAL SHEETS
FAS 798	92-00063-01-RS	CLAY	11	11
FEDERAL ROAD DISTRICT 7	ILLINOIS	FEDERAL AID PROJ.		
CONTRACT NO. 95551				

# TRAFFIC CONTROL PLAN - BIBLE GROVE TO DIETERICH / CLAY CITY BLACKTOP



## LEGEND

- ① 2 - TYPE III BARRICADES WITH ROAD CLOSED TO THRU TRAFFIC
- ② ROAD CLOSED 500 FEET
- ③ ROAD CLOSED AHEAD
- ④ ROAD CLOSED AHEAD WITH ARROW RIGHT (M5-1R(0)-2115)
- ⑤ ROAD CLOSED AHEAD WITH ARROW LEFT (M5-1L(0)-2115)