

ROUTE	SECTION	COUNTY	TOTAL SHEETS	SHEET NO.
F.A.S. 2710	05-00103-00-FP	JASPER	2	1
F.A.S. 2706	05-00104-00-FP	ILLINOIS	PROJECT RS-2710(102)	

CONTRACT #95548

STATE OF ILLINOIS  
DEPARTMENT OF TRANSPORTATION  
DIVISION OF HIGHWAYS

PLANS FOR PROPOSED  
FEDERAL AID SECONDARY PROJECT  
JASPER COUNTY  
SECTION 05-00103-00-FP  
SECTION 05-00104-00-FP  
F.A.S. 2710 & 2706  
COUNTY HIGHWAY 19 & 6  
JOB NO. C-97-065-08  
PROJECT NO. RS-2710(102)

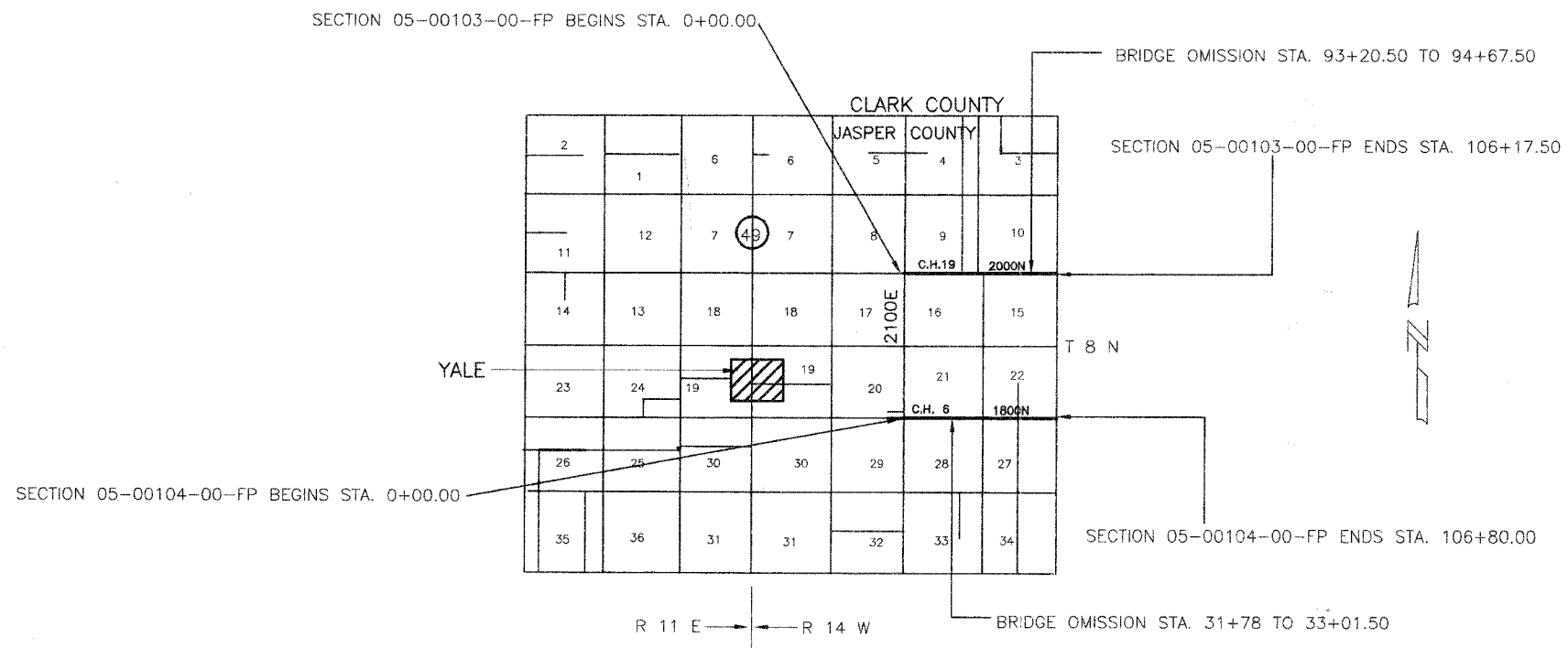
INDEX OF SHEETS

SHEET	ITEM
1	COVER SHEET
2	SUMMARY OF QUANTITIES
	STANDARD 000001-05
	STANDARD 701901
	BLR-22-5

THESE PLANS WERE PREPARED BY ME, OR A FULL TIME MEMBER OF MY STAFF, WORKING UNDER MY PERSONAL SUPERVISION.

BRIDGE OMISSIONS

STA. 93+20.50 TO 94+67.50  
STA. 31+78 TO 33+01.50



*Richard A. Peterson* 3/11/08  
ILLINOIS REG. PROF. ENG. 38893 DATE  
LICENSE EXPIRES 11/30/09  
12871 EAST STATE HWY 33  
NEWTON, ILLINOIS 62448  
PHONE 618-783-2915

APPROVED 3-11 2008  
*Richard A. Peterson*  
COUNTY ENGINEER

PASSED 3/28 2008  
*Manuel Kastl*  
DISTRICT SEVEN ENGINEER OF  
LOCAL ROADS & STREETS

Releasing For  
Bid Based on  
Limited Review 3/28 2008  
*Christie M. Reed*  
DEPUTY DIRECTOR OF HIGHWAYS,  
REGION FOUR ENGINEER

STATE OF ILLINOIS  
DEPARTMENT OF TRANSPORTATION

RURAL MAJOR COLLECTOR  
ADT = 300 / 250  
DESIGN SPEED = 40 MPH

CONTRACT NO. 95548

Joint Utility Locating Information for Excavators  
JULIE 1-800-892-0123

NET LENGTH SECTION 05-00103-00-FP = 10,470.50 Ft. = 1.983 Mi.  
NET LENGTH SECTION 05-00104-00-FP = 10,556.50 Ft. = 2.000 Mi.  
TOTAL = 3.983 Mi.