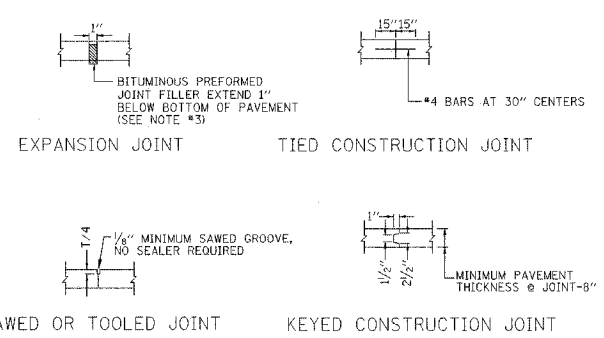
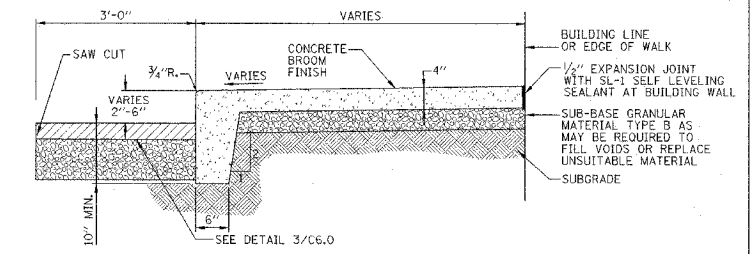


F.A. RTE.	SECTION	COUNTY	TOTAL SHEETS	SHEET NO.
	06-00334-00-SW	MCLEAN	14	C7.0
STA.	TO STA.			
FED. ROAD DIST. NO.	ILLINOIS	FED. AID PROJECT		

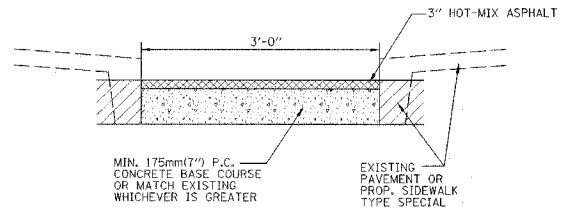


- NOTES:
1. ALL SAWED JOINTS LONGITUDINAL OR TRANSVERSE SHALL BE NONREINFORCED.
  2. ALL TRANSVERSE CONSTRUCTION JOINTS SHALL BE AT EXPANSION JOINTS.
  3. FOR RIGID BASES (C.A.M.) THE EXPANSION JOINT MATERIAL NEED NOT EXTEND 1" BELOW THE PAVEMENT

**1 SIDEWALK JOINT DETAILS**  
N.T.S.



**2 SIDEWALK, SPECIAL**  
N.T.S.

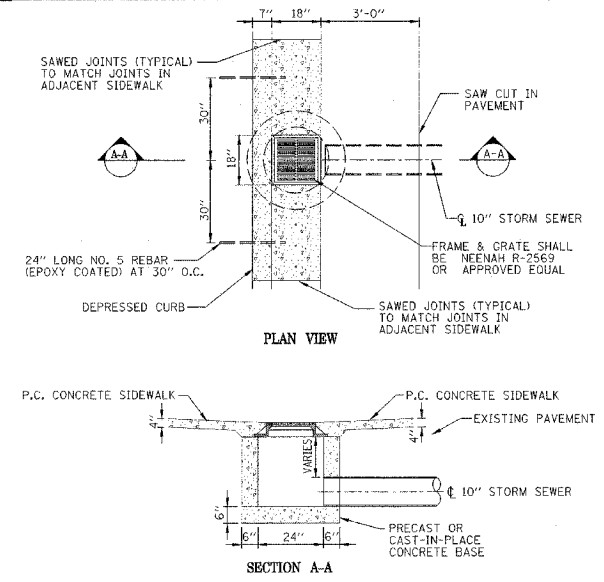


- NOTES:
1. HOT-MIX ASPHALT SHALL BE IN ACCORDANCE WITH SECTION 406 OF THE STANDARD SPECIFICATIONS AND AS MODIFIED BY THIS DETAIL. P.C.C. BASE COURSE SHALL BE IN ACCORDANCE WITH SECTION 353 OF THE STANDARD SPECIFICATIONS.
  2. CONTRACTION JOINTS SHALL BE SAWED IN ACCORDANCE WITH THE FOLLOWING:
    - A. IN PROLONGATION OF EXISTING CONTRACTION OR CONSTRUCTION JOINTS IN THE ADJACENT PAVEMENT OR AT 4.6M(15') CENTERS;
    - B. IN ACCORDANCE WITH THE PROCEDURES SPECIFIED IN ARTICLE 420.10 OF THE STANDARD SPECIFICATIONS;
    - C. AND BE SEALED IN ACCORDANCE WITH ARTICLES 420.02(D) AND 420.14(A) OF THE STANDARD SPECIFICATIONS.
  3. WHERE EXPANSION JOINTS EXIST IN THE PORTION OF THE PAVEMENT TO REMAIN IN PLACE, THE ADJACENT NEW PAVEMENT SHALL PROVIDE THE SAME WIDTH AND TYPE OF JOINT AND JOINT FILLER IN PROLONGATION WITH THE EXISTING JOINT.
  4. ALL DIMENSIONS ARE IN FOOT UNLESS OTHERWISE SHOWN.

STANDARD SPECIFICATION IN THIS DETAIL REFERS TO THE STANDARD SPECIFICATIONS FOR ROAD AND BRIDGE CONSTRUCTION IN ILLINOIS.

**3 PAVEMENT PATCH OVER PROPOSED IMPROVEMENTS**  
N.T.S.

**OMIT**

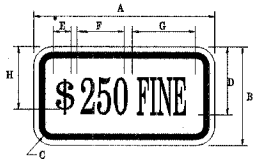


**5 INLET TYPE A1, SPECIAL**  
N.T.S.



- NOTES:
1. SIGN POSTS SHALL BE IN ACCORDANCE WITH I.D.O.T. STATE STANDARD 720011 AND 729001.
  2. SIGNS SHALL BE MOUNTED A MINIMUM OF 4 FEET FROM FINISH GROUND TO BOTTOM OF SIGN IN ACCORDANCE WITH THE ILLINOIS ACCESSIBILITY CODE.

**6 TYPICAL DETAIL FOR SIGN R7-8**  
N.T.S.



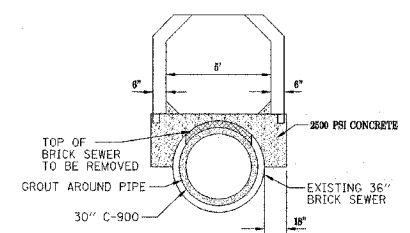
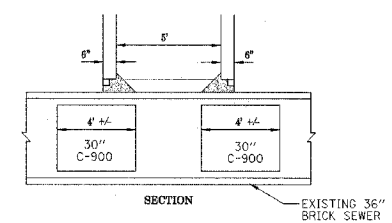
COLORS:  
LEGEND AND BORDER GREEN NON-REFLECTORIZED  
BACKGROUND WHITE REFLECTORIZED

SIGN SIZE	A	B	C	D	E	F	G	H
6X12	18.0	6.0	1.5	4.5	1.1	3.0	5.5	3.0

SIGN SIZE	SERIES	MARGIN	BORDER	BLK STD
6X12	*202B	0.37	0.37	B5-136

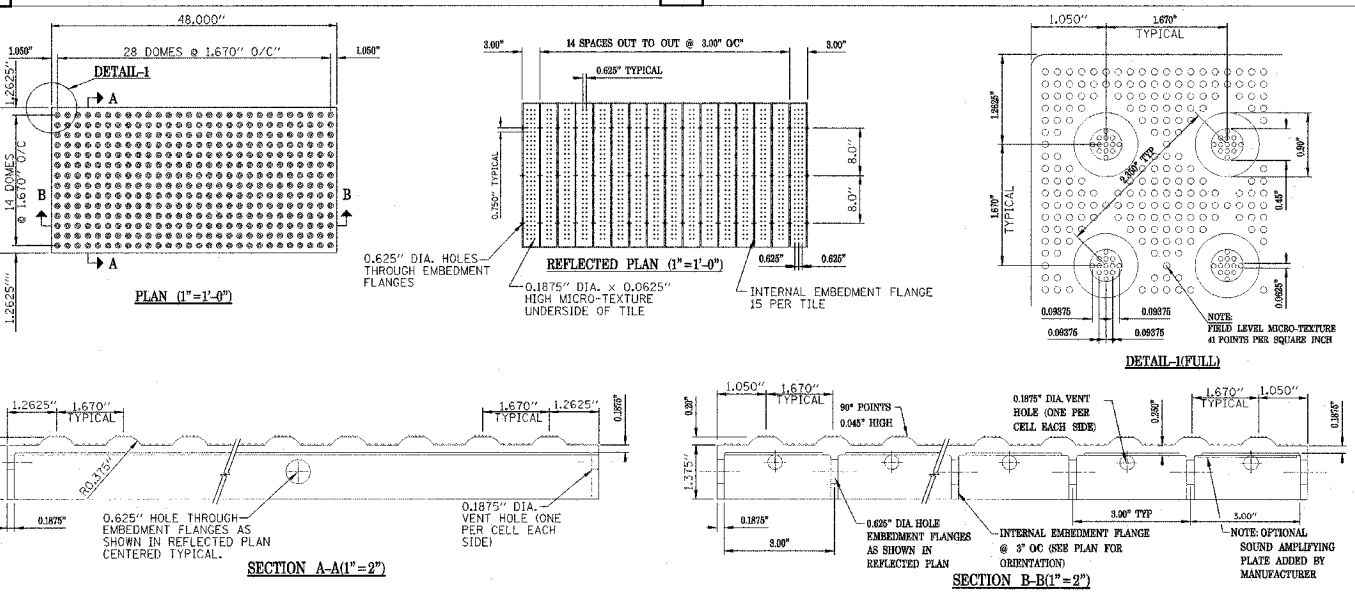
ALL DIMENSIONS IN INCHES.  
TO BE USED WITH R7-8  
(\*S-2C & \*1-3"B=8)

**7 TYPICAL DETAIL FOR SIGN R7-1101**  
N.T.S.

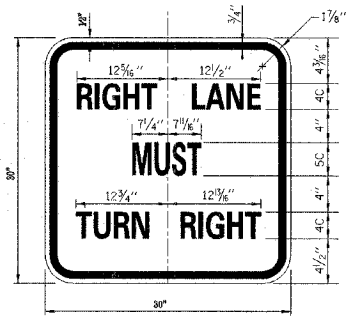


- NOTES:
1. BUILD MANHOLE OVER SEWER. (DO NOT EXCAVATE UNDER BRICK.)
  2. OPEN TOP OF BRICK SEWER.
  3. INSERT 30" C-900 PIPE 4" INTO BRICK SEWER. HEAT C-900 PIPE AS NECESSARY TO FIT INTO BRICK SEWER.
  4. FILL VOID BETWEEN BRICK SEWER & C-900 PIPE WITH NONSHRINK GROUT.
  5. REMOVE BRICK FROM BOTTOM OF MANHOLE & POUR CONCRETE FLOWLINE.
  6. FRAME SHALL BE TYPE 5 WITH A CLOSED LID.

**8 MANHOLE, SPECIAL**  
N.T.S.



**9 DETECTABLE WARNING**  
N.T.S.



- NOTES:
1. SIGN POSTS SHALL BE IN ACCORDANCE WITH I.D.O.T. STATE STANDARD 720011 AND 729001.
  2. SIGNS SHALL BE MOUNTED A MINIMUM OF 4 FEET FROM FINISH GROUND TO BOTTOM OF SIGN IN ACCORDANCE WITH THE ILLINOIS ACCESSIBILITY CODE.

**10 TYPICAL DETAIL FOR SIGN R3-7R**  
N.T.S.

REVISIONS	
NAME	DATE

ILLINOIS DEPARTMENT OF TRANSPORTATION

SITE DETAILS

CITY OF BLOOMINGTON

DOWNTOWN MAIN STREET BEAUTIFICATION

FRONT STREET TO WASHINGTON STREET

SCALE: VERT.      DRAWN BY: DVH  
 HORIZ.              CHECKED BY: JGB  
 DATE: 01-31-08