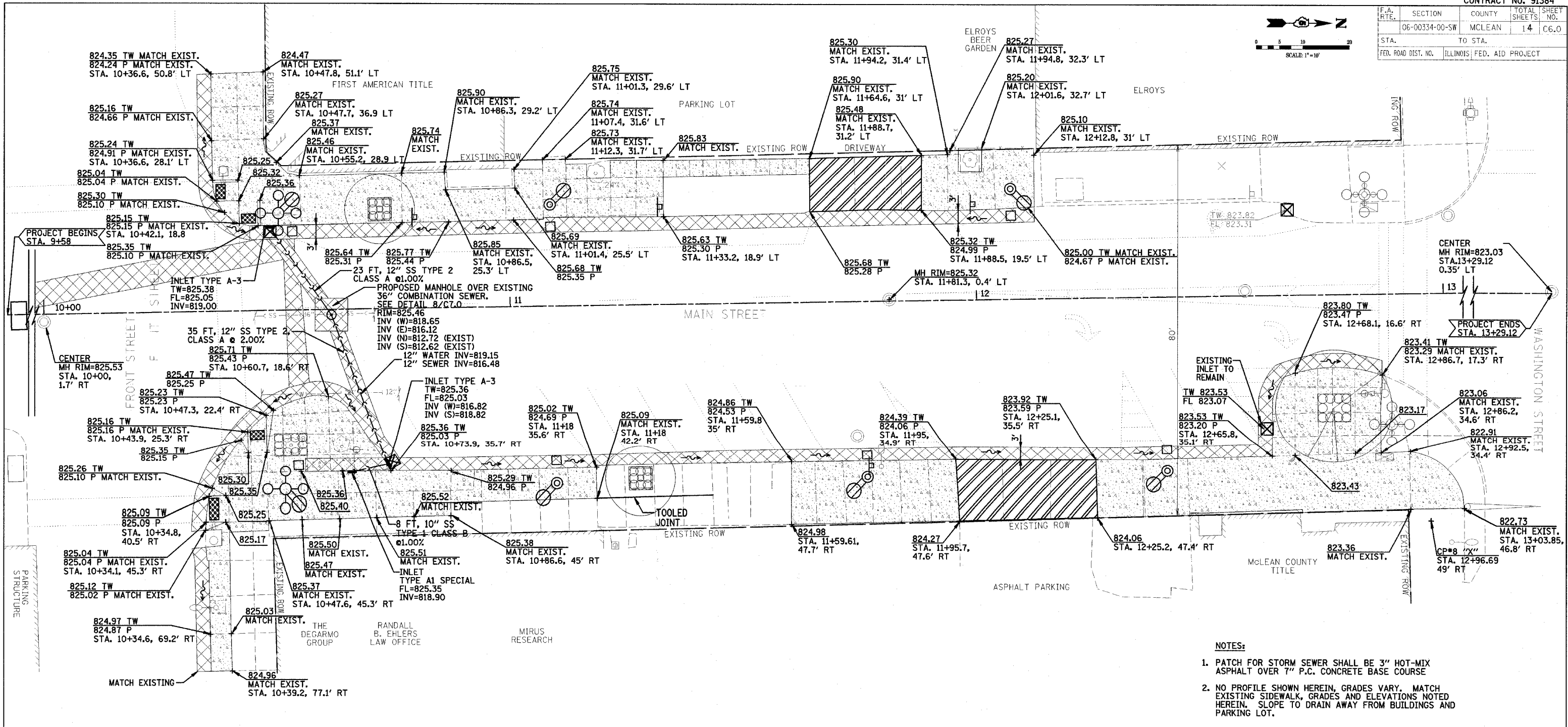
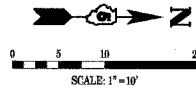


F.A. RTE.	SECTION	COUNTY	TOTAL SHEETS	SHEET NO.
06-00334-00-SW	06-00334-00-SW	MCLEAN	14	C6.0
STA.	TO STA.			
FED. ROAD DIST. NO.	ILLINOIS	FED. AID PROJECT		



NOTES:

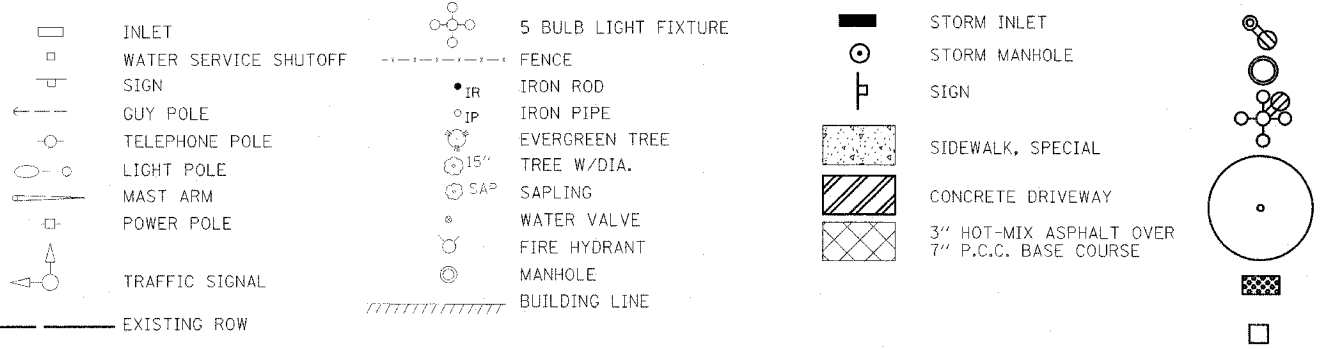
- 1) PATCH FOR STORM SEWER SHALL BE 3" HOT-MIX ASPHALT OVER 7" P.C. CONCRETE BASE COURSE
- 2) NO PROFILE SHOWN HEREIN, GRADES VARY. MATCH EXISTING SIDEWALK, GRADES AND ELEVATIONS NOTED HEREIN. SLOPE TO DRAIN AWAY FROM BUILDINGS AND PARKING LOT.

LEGEND

EXISTING

LEGEND

PROPOSED



INTENDED SEQUENCE

- 1) PLACEMENT OF INLET AND PIPE PROTECTION PRIOR TO THE COMMENCEMENT OF ANY WORK SEE STD 280001
- 2) REMOVAL OF EXISTING STRUCTURE
- 3) CONSTRUCTION OF THE PROPOSED STRUCTURE
- 4) CONSTRUCT ROADWAY EMBANKMENT INCLUDING DITCHES
- 5) THE PLACEMENT AND MAINTENANCE OF TEMPORARY EROSION CONTROLS
- 6) FINAL GRADING AND SHAPING INCLUDING PLACEMENT OF THE AGGREGATE SURFACE
- 7) REMOVAL AND PROPER CLEAN UP OF TEMPORARY EROSION CONTROLS
- 8) PLACEMENT OF PERMANENT EROSION CONTROLS

+TW	TOP OF SIDEWALK ELEVATION
+P	PAVEMENT ELEVATION
+TR	TOP OF RIM ELEVATION
⊠	INLET PROTECTION
FL	FLOW LINE ELEVATION
→	FLOW ARROW

REVISIONS	
NAME	DATE

ILLINOIS DEPARTMENT OF TRANSPORTATION
 GRADING AND EROSION CONTROL PLAN
 CITY OF BLOOMINGTON
 DOWNTOWN MAIN STREET BEAUTIFICATION
 FRONT STREET TO WASHINGTON STREET
 SCALE: VERT. DATE: 01-31-08
 DRAWN BY: DVH
 CHECKED BY: JGB

PLOT DATE = #DATE#
 FILE NAME = #FILE#
 PLOT NAME = #PLOT#
 USER NAME = #USER#