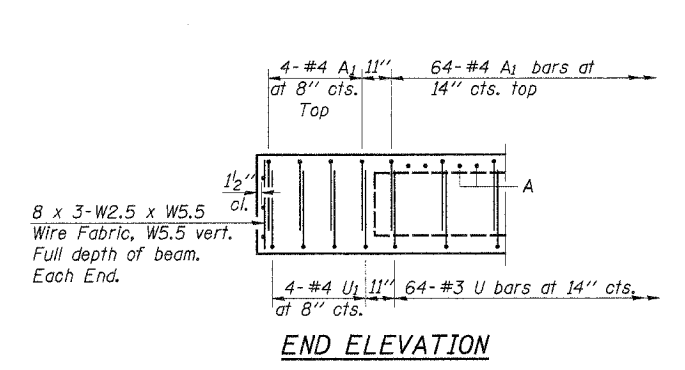
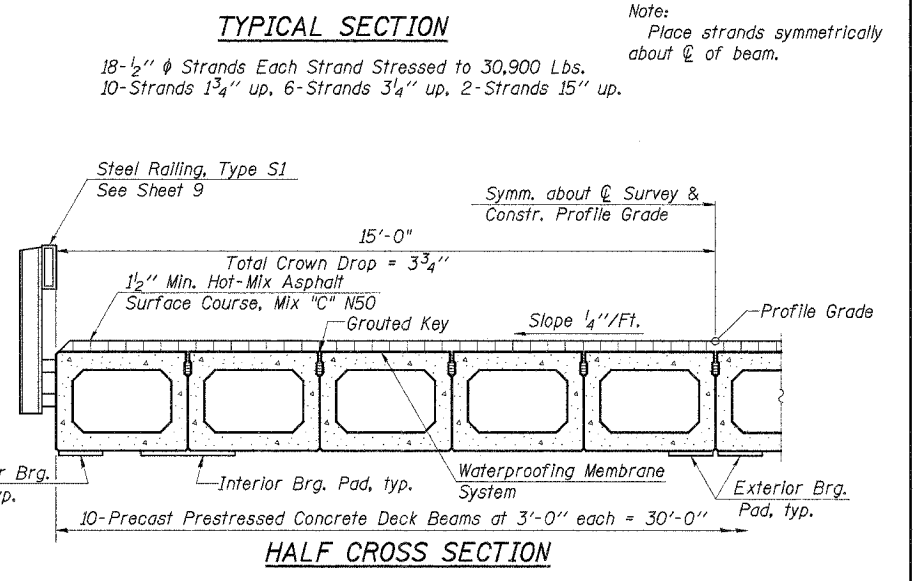
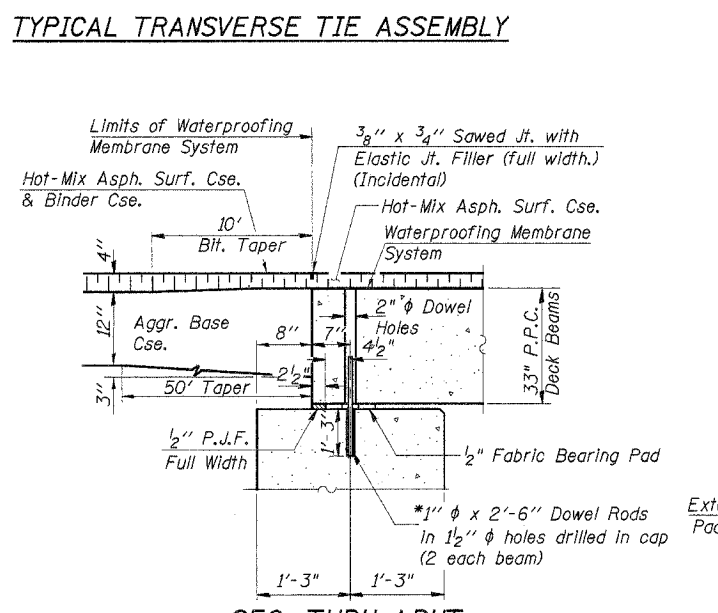
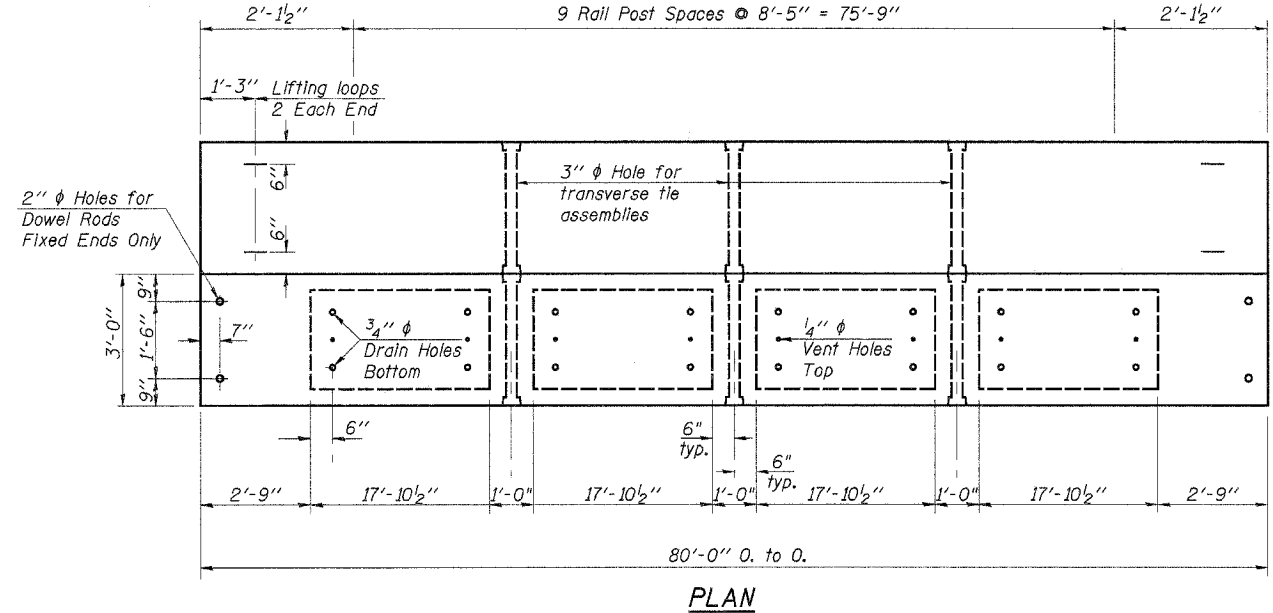
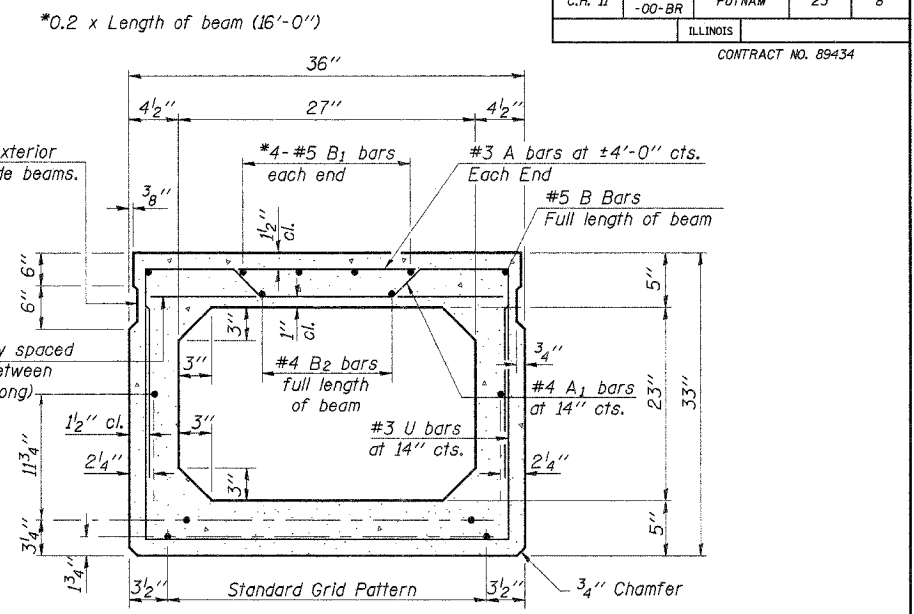
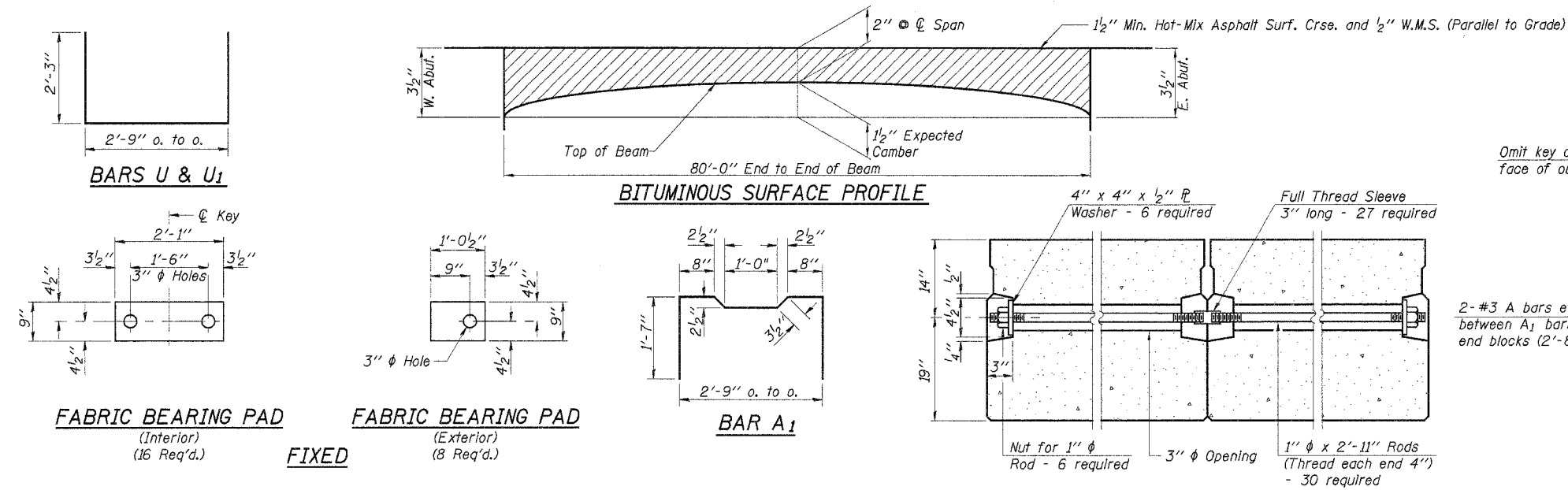
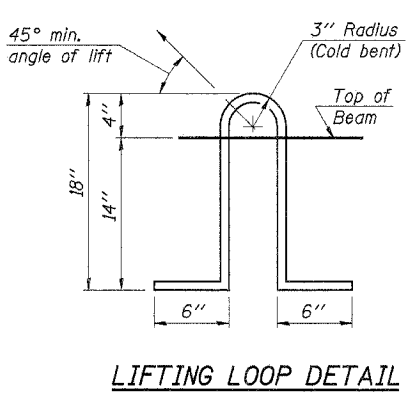


ROUTE NO.	SECTION	COUNTY	TOTAL SHEETS	SHEET NO.
C.H. 11	08-00022-00-BR	PUTNAM	23	8
ILLINOIS		CONTRACT NO. 89434		



Note A:
The top surface of the beams shall be finished in accordance with the Manual for Fabrication of Precast Prestressed Concrete Products and the surface shall not be roughed by brooming. The finished surface shall be free of depressions or high spots with sharp corners and the top edge of keys shall be rounded or chamfered a min. of 1/4".



NOTES
* Dowel Rods to be grouted after beams are in place and allowed to cure (Min. 24 hrs.) prior to grouting the shear keys.

NOTES
Prestressing steel shall be uncoated high strength, low relaxation 7-wire strand, Grade 270. The nominal diameter shall be 1/2" and the nominal cross-sectional area shall be 0.153 sq. in. Lifting loops shall be 3-1/2" φ-270 ksi strands, as shown. The 1" rods in the transverse tie assembly shall be tightened to a snug fit and the threads set. Pockets that receive transverse tie bar on outside shall be filled with grout after transverse tie assembly is in place. Non prestressing steel shall conform to ASTM A706 Gr 60 (IL Modified). The bearing seat surfaces shall be adjusted by shimming to assure firm and even bearing. Two 1/8" fabric adjusting shims of the dimensions of the Exterior Bearing Pad shall be provided for each bearing. (No. Req'd. 48) Keyway surfaces shall be cleaned to remove form oil or other bond breaking material prior to shipment of the beams. Cleaning shall be done by sandblasting the keyway areas between top of the beam and the bottom edge of the key. Required Release Strength, f'ci, shall be 4,000 p.s.i. See Special Provisions for review and distribution of shop drawings. Rail post anchor devices shall be cast into outside beam as elsewhere specified.

DESIGNED	S.F.M.
CHECKED	F.J.S.
DRAWN	S.A.P.
CHECKED	F.J.S.

PD-5-S 9-1-03

BILL OF MATERIAL

Item	Unit	Quantity
Precast Prestressed Concrete Deck Beams (33" Depth)	Sq. Ft.	2,400
Hot-Mix Asphalt Surf. Crse., Mix "C", N50	Ton	30.0
P.C. Mortar Fairing Course	Foot	720
Waterproofing Membrane System	Sq. Yd.	267
Estimated Total Weight (One Beam) = 55,100 Pounds		

SUPERSTRUCTURE
COUNTY HIGHWAY 11
SECTION 08-00022-00-BR
PUTNAM COUNTY
STATION 27+43

4440 ASH GROVE
SPRINGFIELD, ILL. 62711
(217) 793-8600
www.lehr-graham.com

LEHR-GRAHAM & ASSOCIATES, LLC
ENGINEERING AND SCIENCE CONSULTANTS
PREPARED BY: ROYCE P. B. ROYCE, P.E., SPRINGFIELD, ILL.

JOB NO.: 46856
FILE: 46856SUPER.DGN
DATE: 04/12/07