

SE. 1/4, SEC. 4, T. 31 N., R. 1 W., 3RD P.M.

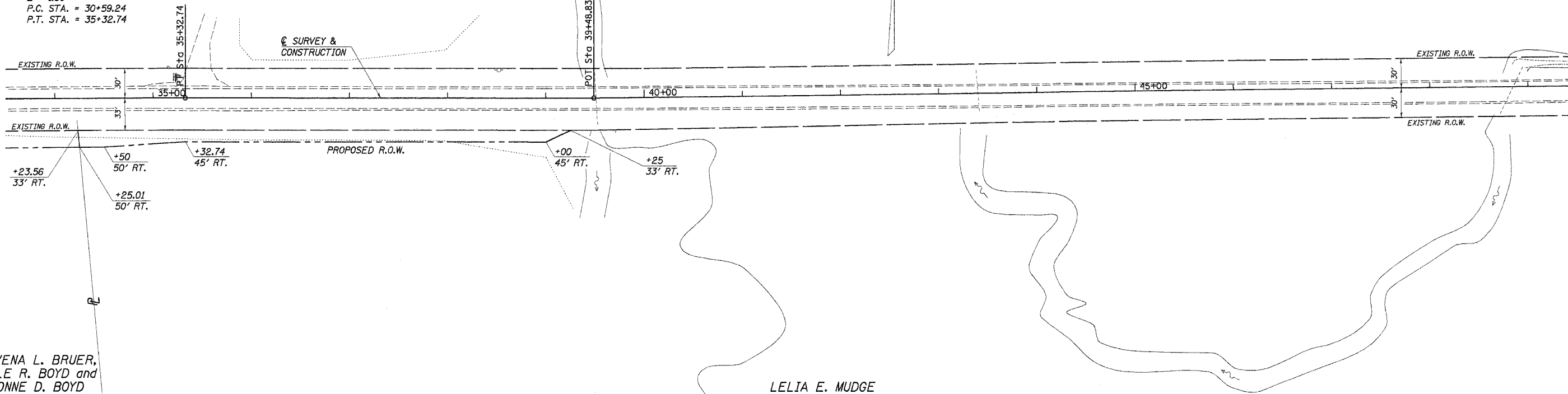
BENJAMIN G. HOYLE

CONTRACT NO.

F.A. RTE.	SECTION	COUNTY	TOTAL SHEETS	SHEET NO.
11	08-00022-00-BR	PUTNAM	23	5
STA. 33+50		TO STA. 49+50		
ILLINOIS				

CONTRACT NO. 89434

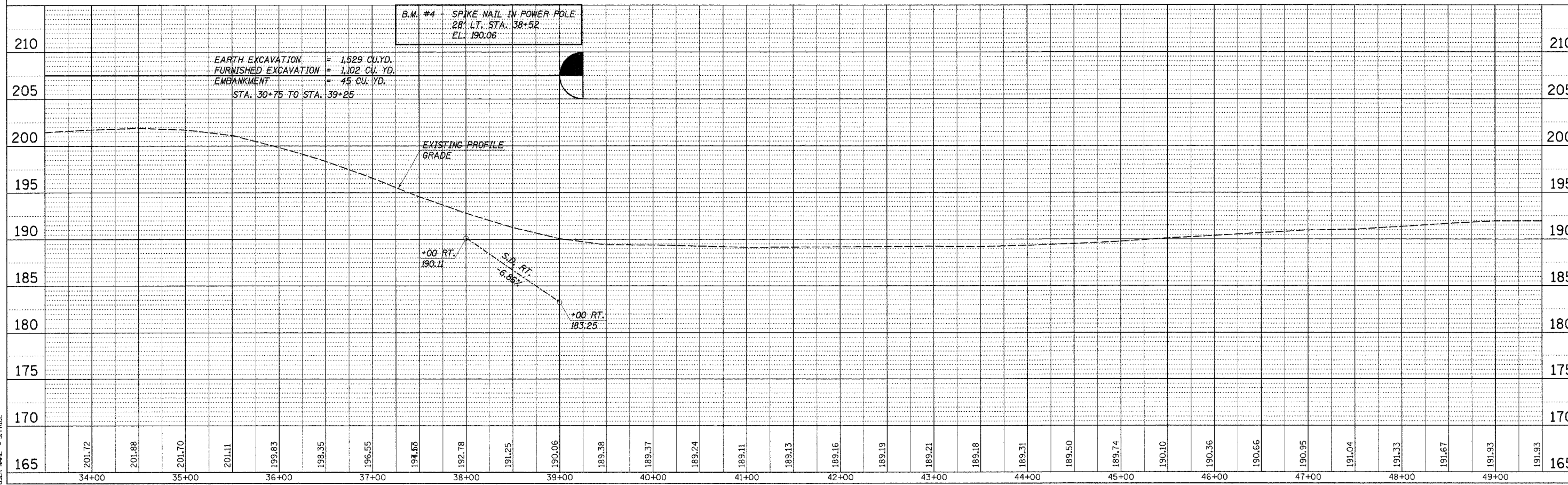
PI STA. = 32+96.00
 $\Delta = 1^\circ 33' 01''$ (RT)
 $D = 0^\circ 19' 39''$
 $R = 17,500.00'$
 $T = 236.76'$
 $L = 473.50'$
 $E = 1.60'$
 P.C. STA. = 30+59.24
 P.T. STA. = 35+32.74



MALVENA L. BRUER,
 DALE R. BOYD and
 YVONNE D. BOYD

LELIA E. MUDGE

NE. 1/4, SEC. 9, T. 31 N., R. 1 W., 3RD P.M.



PLAN	DATE
BY	
CHECKED	
DATE	

PROFILE	DATE
BY	
CHECKED	
DATE	

PLOT DATE = 02/06/07
 FILE NAME = 46856p2.dgn
 PLOT SCALE = S. PRICE
 USER NAME = S. PRICE