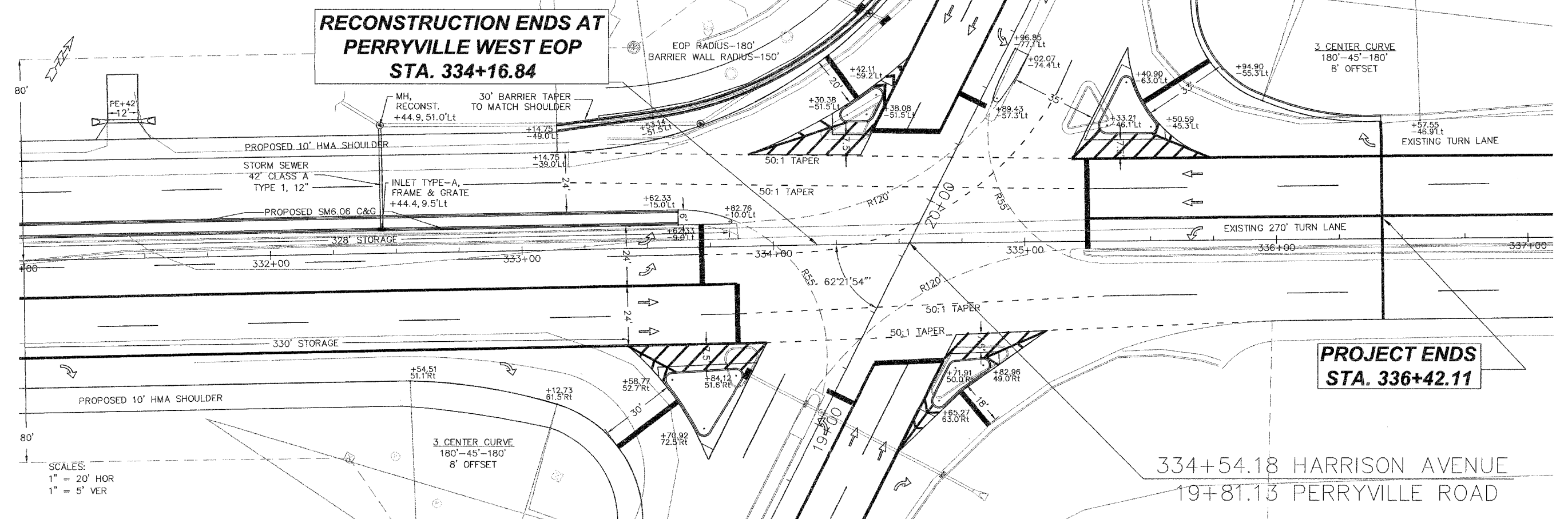


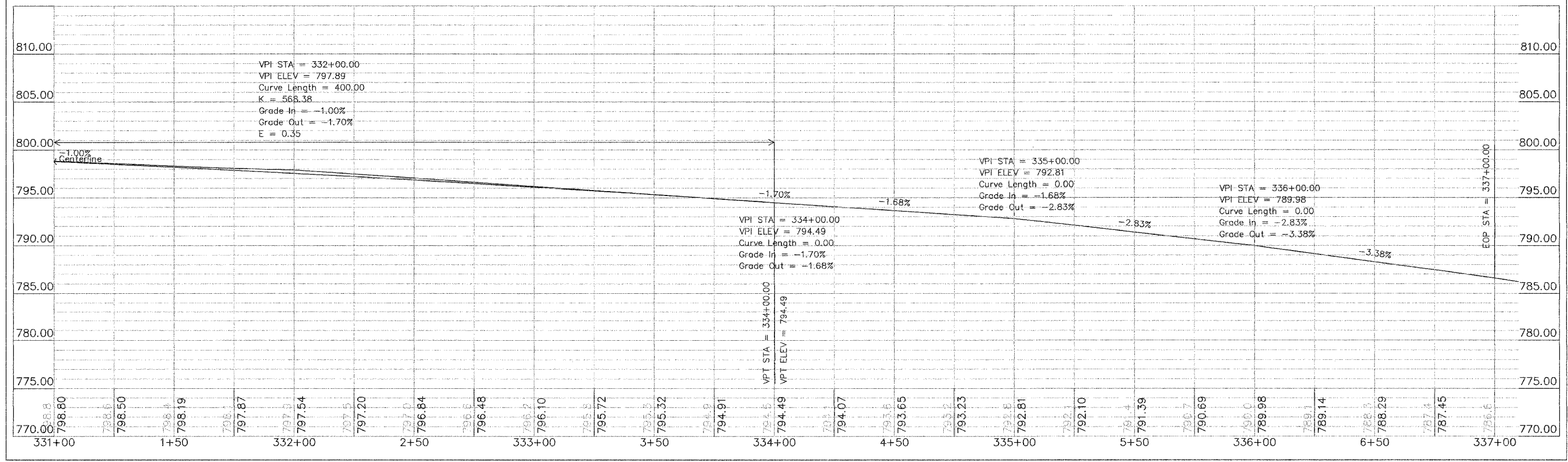


RECONSTRUCTION ENDS AT PERRYVILLE WEST EOP STA. 334+16.84

PROJECT ENDS STA. 336+42.11



SCALES:
1" = 20' HOR
1" = 5' VER



HARRISON AVENUE PLAN & PROFILE

ES: [unclear] Projects/Harrison Avenue/85437.dwg, 4-16-2008 7:21:27 AM, LL, WCD, G. Lindberg