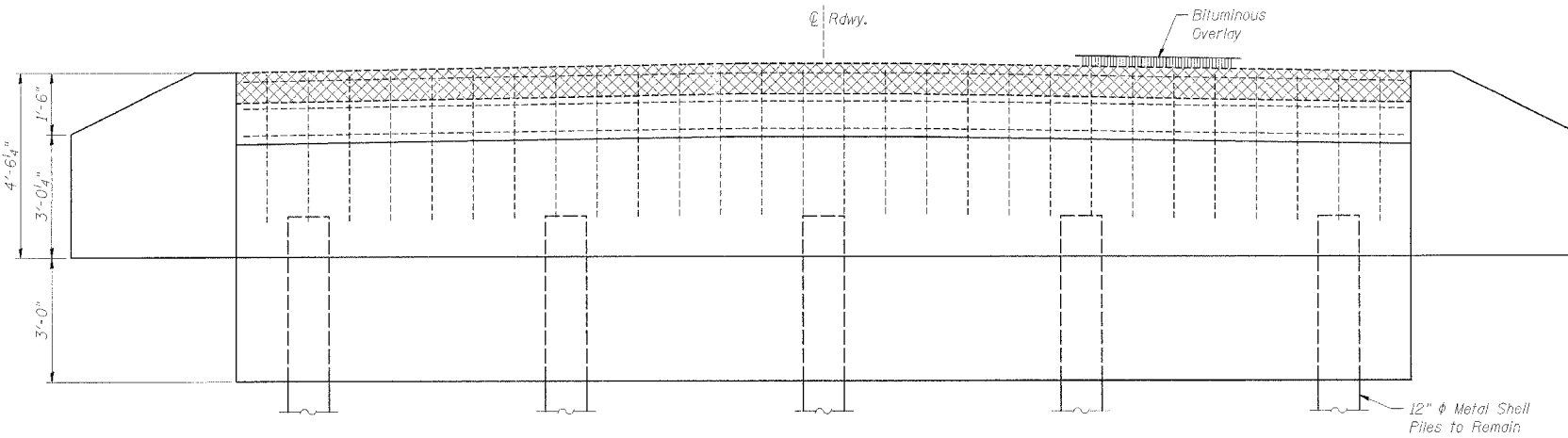
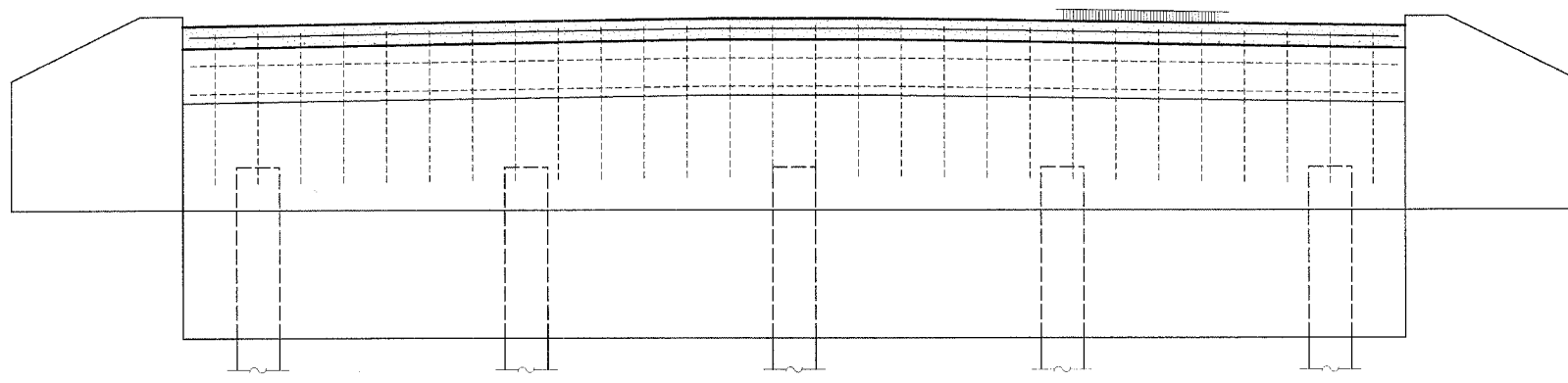


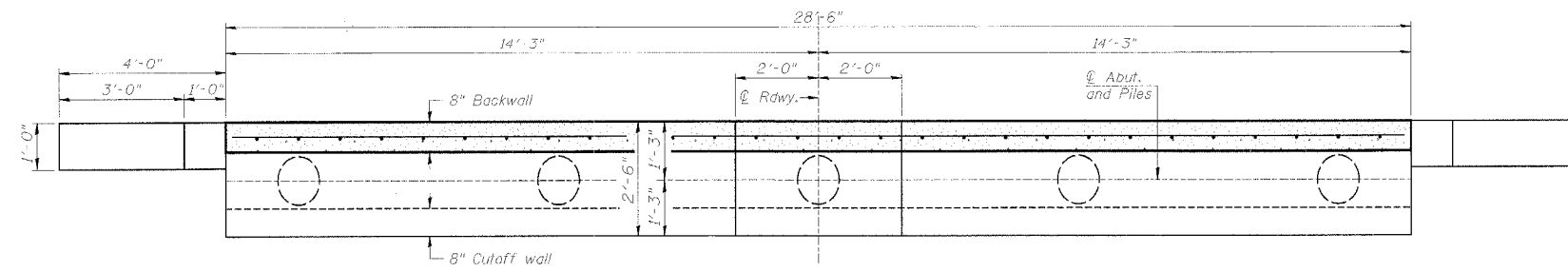
ROUTE	SECTION	COUNTY	SHEET	TOTAL SHEETS
TR 61A	06-15118-01-BR 06-02121-01-BR	OGLE WINNEBAGO	5	5
FED. ROAD DIST. NO. 7		ILLINOIS	FED. AID PROJECT: BH05-14(64)	



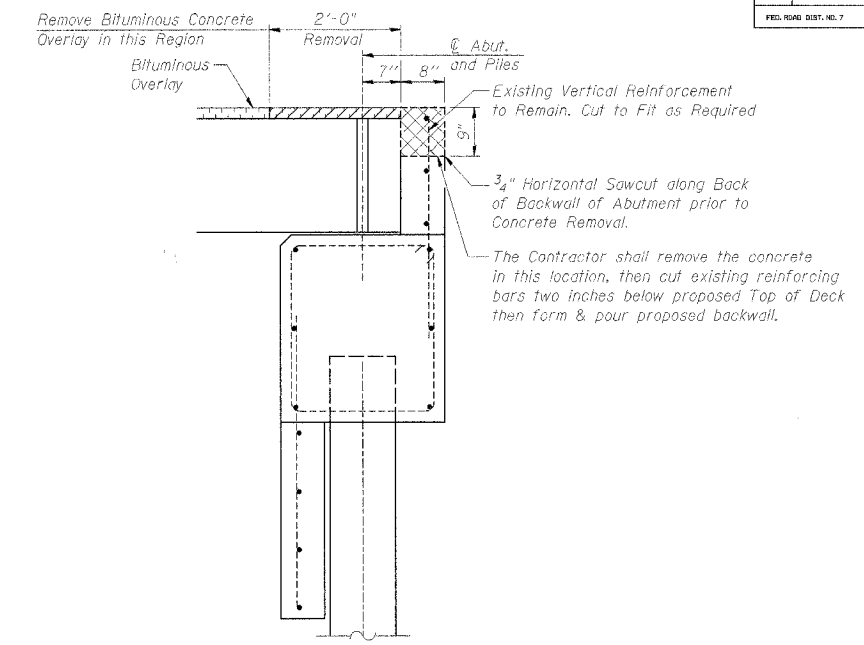
ELEVATION-EXISTING
(Looking East)



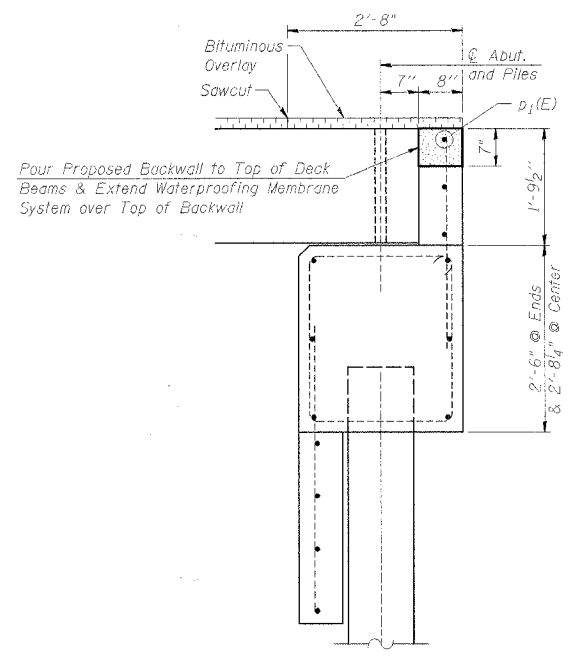
ELEVATION



TOP PLAN



SEC. THRU EXISTING ABUT.



SEC. THRU EXISTING ABUT.

**BILL OF MATERIAL
EAST & WEST ABUTMENTS**

Bar No.	Size	Length	Shape
p ₁ (E)	#4	28'-2"	—
Incidental Hot-Mix Asphalt Surfacing		Ton	9
Bituminous Concrete Removal		Sq. Yd.	17
Concrete Removal		Cu. Yd.	1.1
Concrete Structures		Cu. Yd.	0.8
Reinforcement Bars, Epoxy Coated		Pound	40
Waterproofing Membrane System		Sq. Yd.	17

NOTES:

- All exposed edges shall have 3/4" chamfers unless otherwise noted.
- Hatched area indicates Concrete Removal Limits.
- 3/4" sawcuts on existing structure prior to concrete removal operations shall be considered incidental to the contract.

**BACKWALL REPAIR DETAILS FOR ABUTMENTS
EDSON ROAD (TR 61A) OVER
SOUTH BRANCH KISHWAUKEE RIVER
STA. 41+00 (071-3304)
SECTION 06-15118-01-BR
MONROE ROAD DISTRICT
OGLE COUNTY
SECTION 06-02121-01-BR
CHERRY VALLEY ROAD DISTRICT
WINNEBAGO COUNTY
WHA # 1092D06**