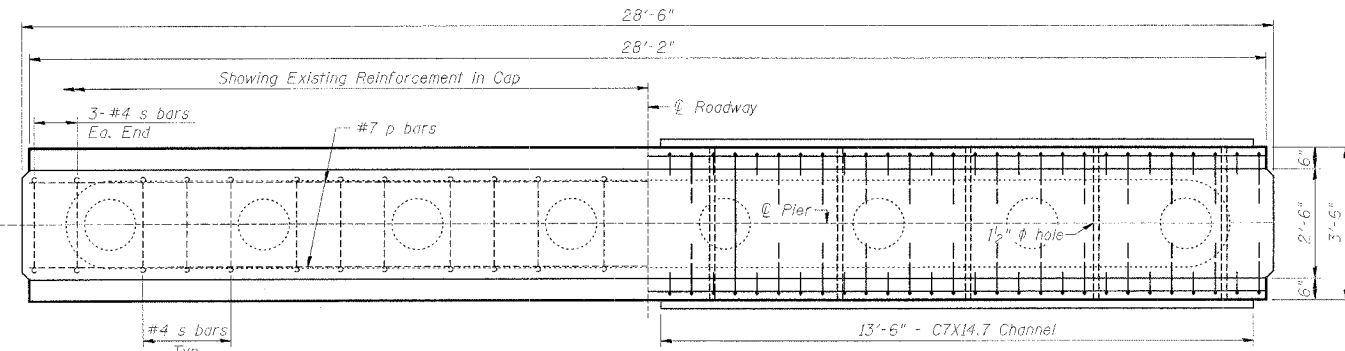
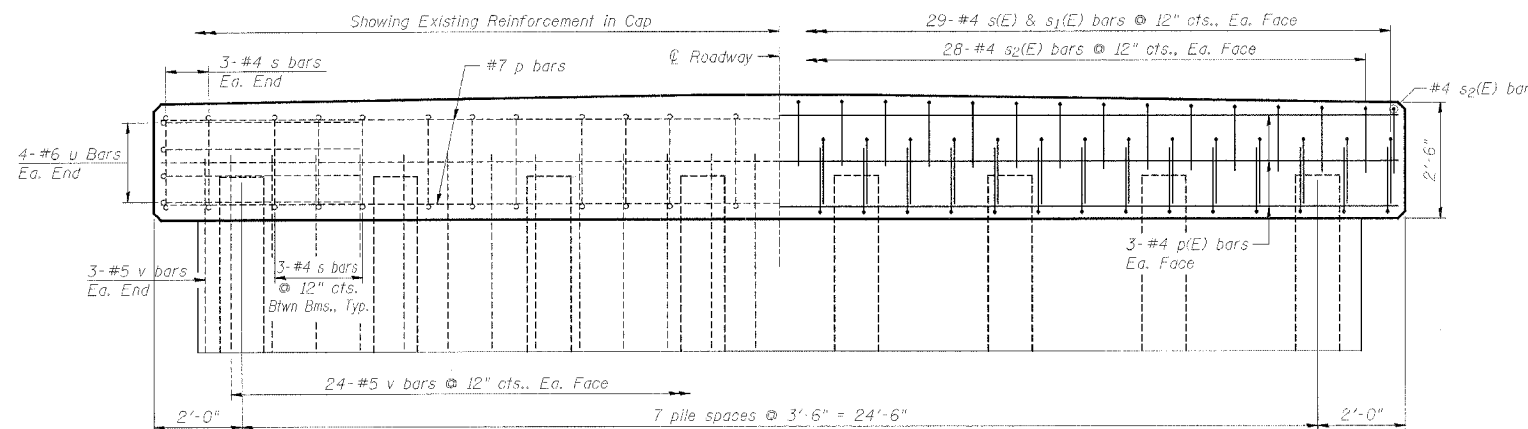


ROUTE	SECTION	COUNTY	DATE	SHEET
TR 61A	06-15118-01-BR 06-02121-01-BR	OGLE WINNEBAGO	5	4
FED. ROAD DIST. NO. 7	ILLINOIS	FED. AID PROJECT: B405-141(6.4)		



TOP PLAN



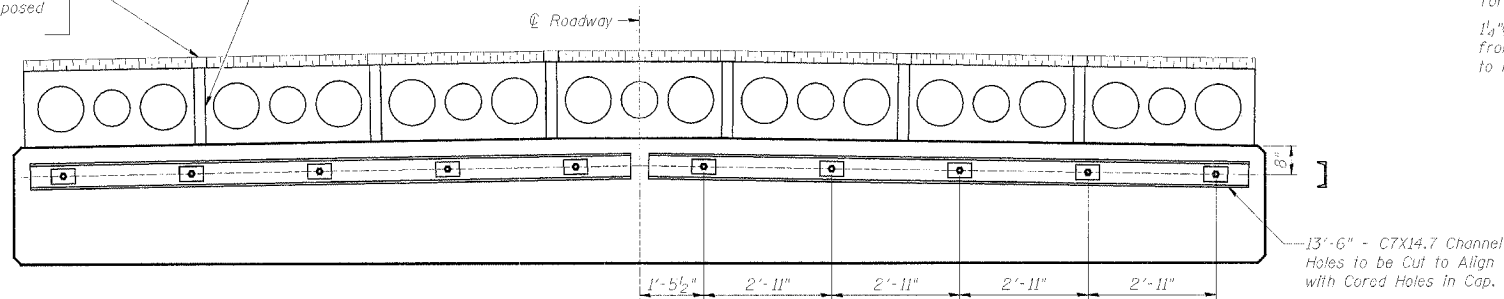
EXISTING REINFORCEMENT

PROPOSED REINFORCEMENT

ELEVATION

Core 4" dia. Hole in Existing Bituminous Concrete Surface at every Beam Joint Each Side of Pier Cap above Proposed Concrete Region.

Core or Drill 3" dia. Hole between Beams through Keyway

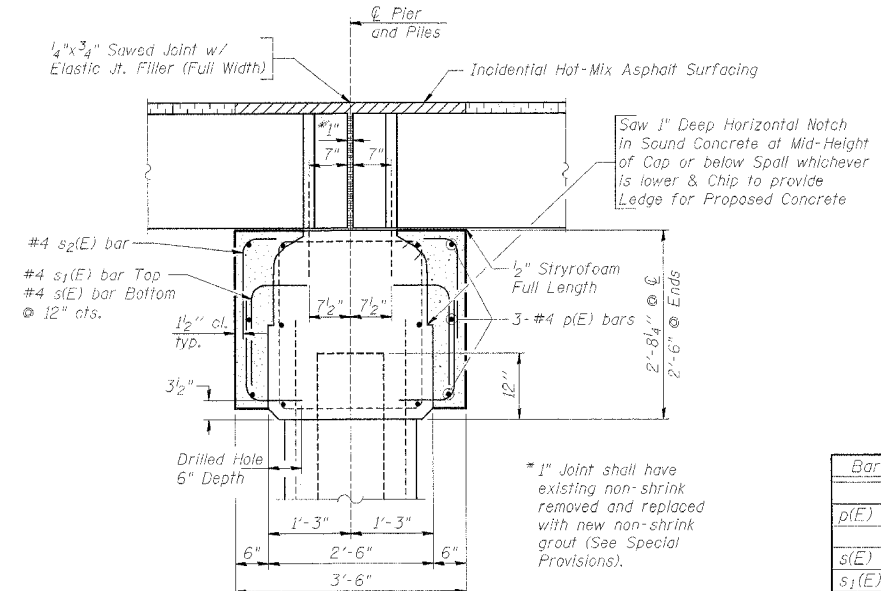


PROPOSED REINFORCEMENT

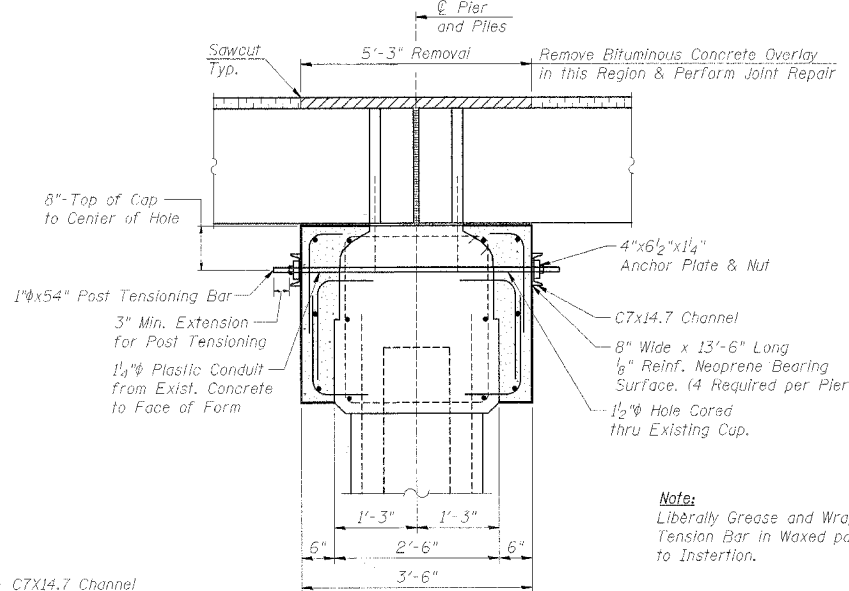
ELEVATION

NOTES:

- Cut s₂(E) bars in Field to Fit if Necessary
- Epoxy grout #4 s₁(E) bars in a 5/8" dia. Drilled hole to provide a minimum of 4" of Engagement in Spalled areas with a depth of 5" or Greater.
- Epoxy grout #4 s₁(E) bars in a 5/8" dia. Drilled hole to provide a minimum of 6" Measured from the Face of the Existing Cap where the Depth of Spalling is 5" or Less.
- Epoxy grout the Bottom Row of #4 s₁(E) bars and Those located in areas of sound concrete in a 5/8" dia. Drilled hole with a Depth of 5" Measured from the Face of Cap.
- s₁(E) bars may be Cut to Fit to provide 1 1/2" cover over bars at Face Provided 5" Depth of Engagement is Maintained.
- Entire Cap Face to be Sand Blasted to Expose Aggregate for Bonded Construction Joint Prior to Closing Formwork.
- All Exposed Edges shall have 3/4" Chamfer.
- 1" dia. bars shall be Post Tensioned to 50 kips.
- Properly clean Deck Beam surface prior to placing Waterproofing Membrane System while allowing for Membrane overlap. Cost included in Waterproofing Membrane System.



SEC. THRU EXISTING PIERS (Reinforcement)



SEC. THRU EXISTING PIERS (Post Tensioning)

BILL OF MATERIAL PIERS #1, #2 & #3

Bar	No.	Size	Length	Shape
p(E)	18	#4	27'-10"	—
s(E)	174	#4	2'-5"	—
s ₁ (E)	174	#4	2'-6"	—
s ₂ (E)	180	#4	2'-0"	—
Incidental Hot-Mix Asphalt Surfacing		Ton	12	
Bituminous Concrete Removal		Sq. Yd.	49	
Concrete Structures		Cu. Yd.	9.2	
Furnishing & Erecting Structural Steel		L. Sum	1	
Reinforcement Bars, Epoxy Coated		Pound	1,150	
Waterproofing Membrane System		Sq. Yd.	49	
Structural Repair of Concrete (Depth equal to or less than 5 inches)		Sq. Ft.	2.8	
Joint Repair		Each	3	

CAP REPAIR DETAILS FOR PIERS 1,2 & 3
EDSON ROAD (TR 61A) OVER SOUTH BRANCH KISHWAUKEE RIVER STA. 41+00 (071-3304)
SECTION 06-15118-01-BR MONROE ROAD DISTRICT OGLE COUNTY
SECTION 06-02121-01-BR CHERRY VALLEY ROAD DISTRICT WINNEBAGO COUNTY