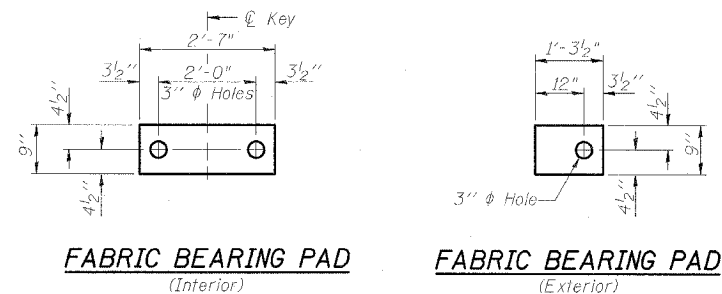


STATE OF ILLINOIS  
DEPARTMENT OF TRANSPORTATION

ROUTE NO.	SECTION	COUNTY	DATE	SHEET NO.
FAS 899	8BR-2	SALINE	75	42
FED. ROAD DIST. NO. 4	ILLINOIS	FED. AID PROJECT		18 SHEETS

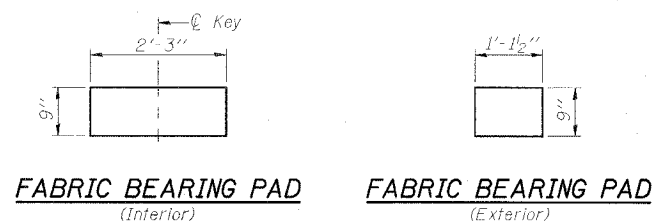
78028



FABRIC BEARING PAD  
(Interior)

FABRIC BEARING PAD  
(Exterior)

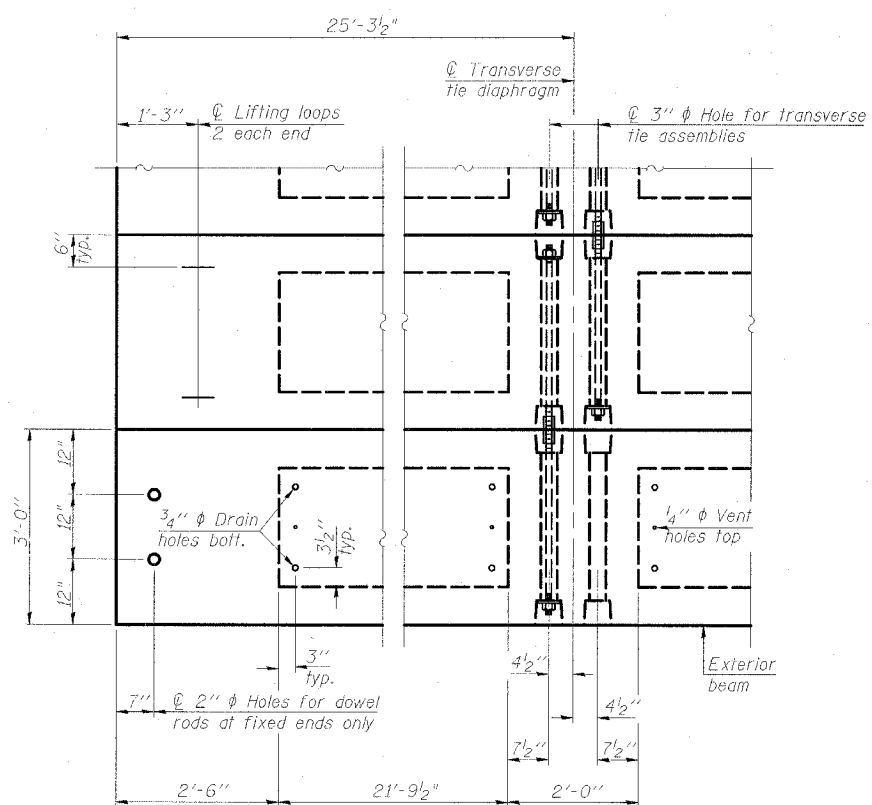
FIXED



FABRIC BEARING PAD  
(Interior)

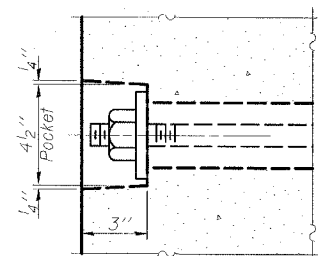
FABRIC BEARING PAD  
(Exterior)

EXPANSION

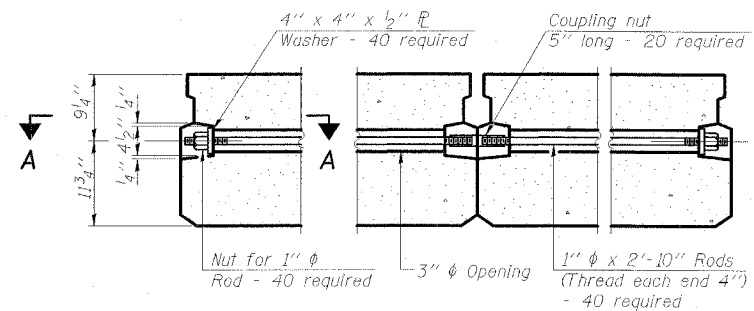


PLAN VIEW

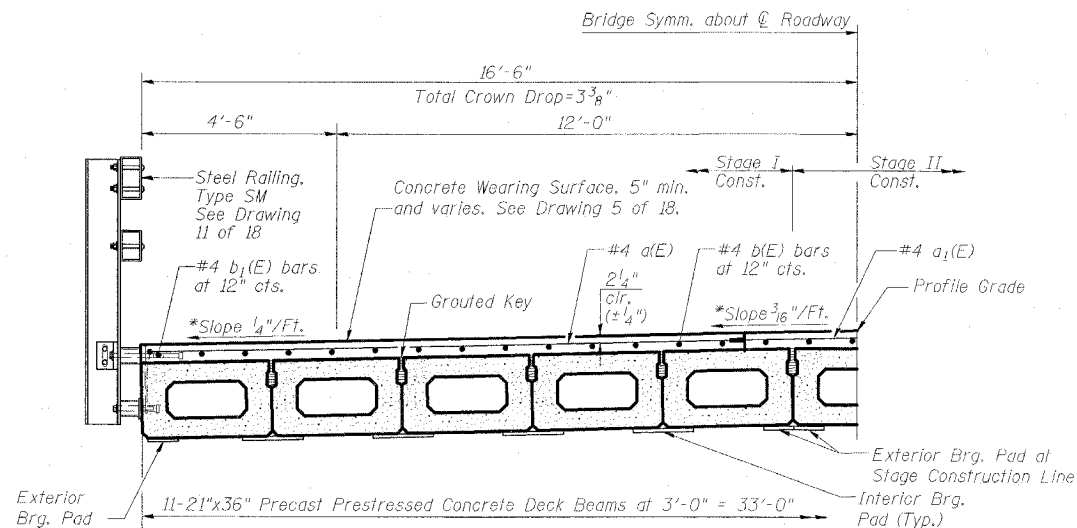
Note: Connect beams in pairs with the transverse tie configuration shown.



SECTION A-A

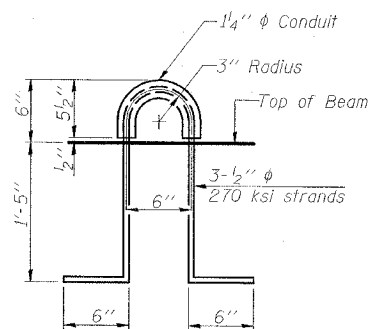


TYPICAL TRANSVERSE TIE ASSEMBLY



\* Cross slopes shown are applicable to Concrete Wearing Surface.

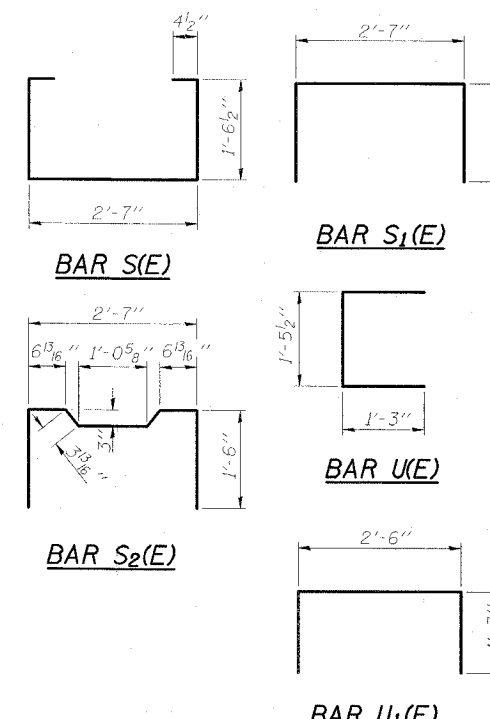
HALF CROSS SECTION  
(Looking West)



LIFTING LOOP DETAIL

NOTES

- Prestressing steel shall be uncoated high strength, low relaxation 7-wire strand, Grade 270. The nominal diameter shall be 1/2" and the nominal cross-sectional area shall be 0.153 sq. in. The 1" rods in the transverse tie assembly shall be tightened to a snug fit and the threads set. Pockets on exterior faces of bridge shall be filled with grout after transverse tie assembly is in place.
- Reinforcement bars shall conform to ASTM A 706 (IL MOD), Grade 60. (See Special Provisions)
- Two 1/8" fabric adjusting shims of the dimensions of the exterior bearing pad shall be provided for each bearing pad location.
- A minimum 2 1/2" diameter lifting pin shall be used to engage the lifting loops during handling.
- Corrosion Inhibitor, per Article 1020.05(b)(12) and 1021.06 of the Standard Specifications, shall be used in the concrete for precast prestressed concrete deck beams.
- Compressive strength of prestressed concrete, f'c, shall be 6000 psi.
- Compressive strength of prestressed concrete at release, f'ci, shall be 5000 psi.
- See Dwg. No. 2 of 18 for location of rail anchors and additional notes.



BILL OF MATERIAL

Item	Unit	Quantity
Precast Prestressed Conc. Deck Bms. (21" Depth)	Sq. Ft.	3339

**SUPERSTRUCTURE DETAILS**  
**OLD IL 13 OVER BANKSTON FORK**  
**FAS ROUTE 899 - SECTION 8BR-2**  
**SALINE COUNTY**  
**STATION 802+60.00**  
**STRUCTURE NO. 083-0036**

**ESCA**  
CONSULTANTS, INC.

DESIGNED BY:	JMS	10/07
DRAWN BY:	CJ/HAS	10/07
CHECKED BY:	DAJ/ELH	01/08
APPROVED BY:	RDP	01/08