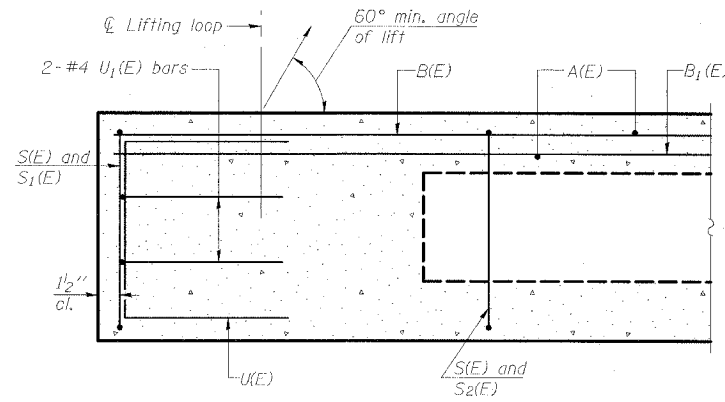


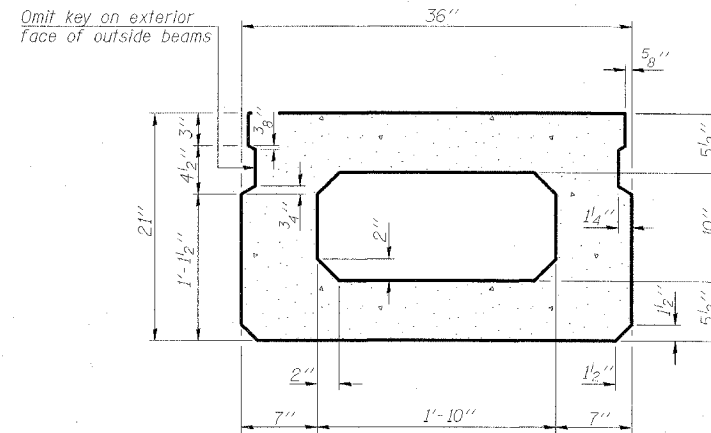
STATE OF ILLINOIS
DEPARTMENT OF TRANSPORTATION

ROUTE NO.	SECTION	COUNTY	DATE	SHEET	SHEET NO. 6 18 SHEETS
FAS 899	8BR-2	SALINE	75	41	
FED. ROAD DIST. NO. 4	ILLINOIS	FED. AID PROJECT			

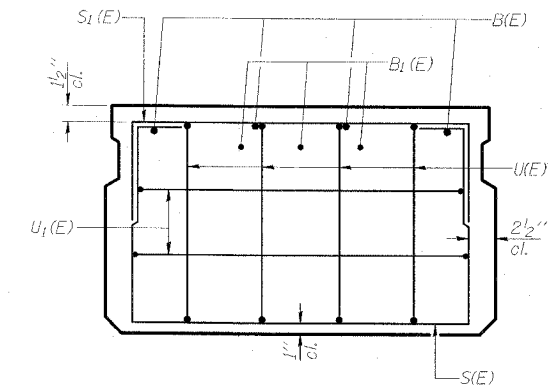
78028



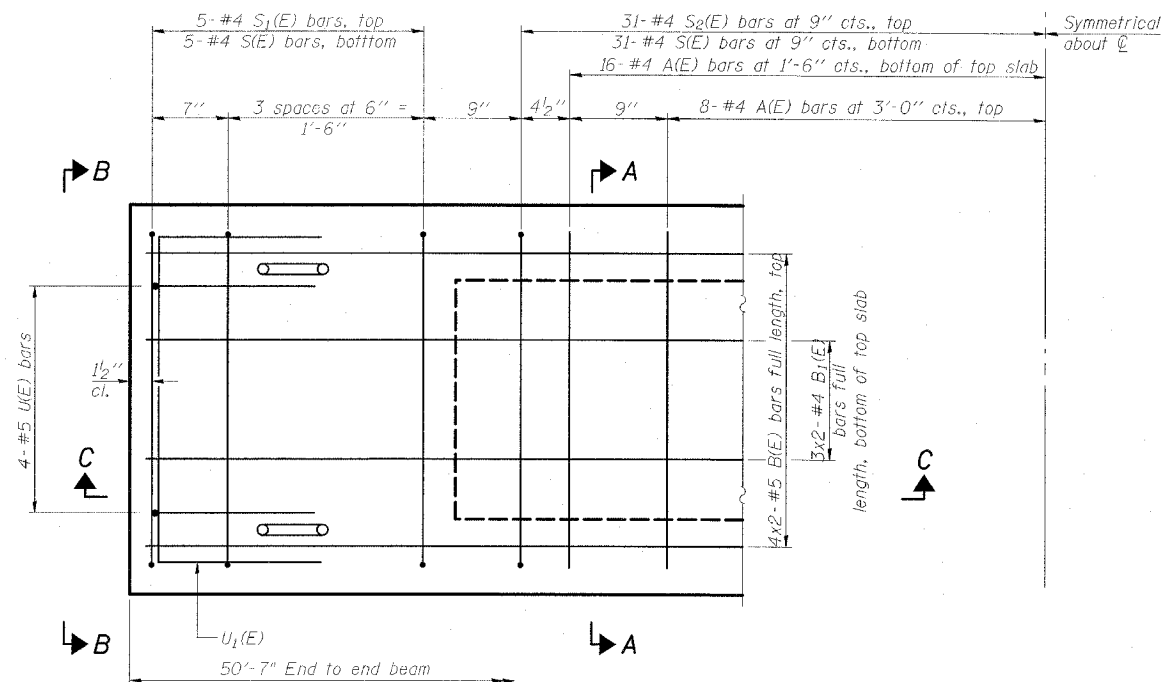
SECTION C-C



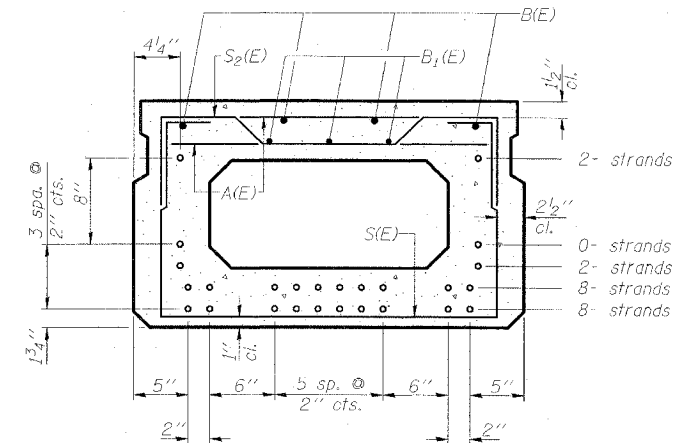
SECTION A-A
(Showing dimensions)



VIEW B-B



PLAN VIEW



SECTION A-A
(Showing reinforcement and permissible strand locations)
20 - 1/2" strands, each strand stressed to 30,900 lbs

Note: Place the number of strands specified in each row symmetrically about the centerline of beam in the permissible strand locations shown.

BAR LIST
ONE BEAM ONLY
(For information only)

Bar	No.	Size	Length	Shape
A(E)	48	#4	2'-7"	—
B(E)	8	#5	26'-4"	—
B1(E)	6	#4	26'-1"	—
S(E)	72	#4	6'-5"	□
S1(E)	10	#4	5'-7"	□
S2(E)	62	#4	5'-10"	□
U(E)	8	#5	4'-0"	□
U1(E)	4	#4	5'-0"	□

Note: See sheet 7 of 18 for additional details and Bill of Material.

MIN. BAR LAP
#5 bar = 2'-2"

Notes: 1. Spacing of S(E) and S2(E) bars may be adjusted up to 4" in the immediate area of the transverse tie diaphragms to miss the block outs for the transverse ties.

2. Adjust reinforcement locations to clear dowel holes at fixed ends.

ESCA
CONSULTANTS, INC.

DESIGNED BY:	JMS	10/07
DRAWN BY:	CJ/HAS	10/07
CHECKED BY:	DAJ/ELH	01/08
APPROVED BY:	RDP	01/08

SUPERSTRUCTURE DETAILS
OLD IL 13 OVER BANKSTON FORK
FAS ROUTE 899 - SECTION 8BR-2
SALINE COUNTY
STATION 802+60.00
STRUCTURE NO. 083-0036