

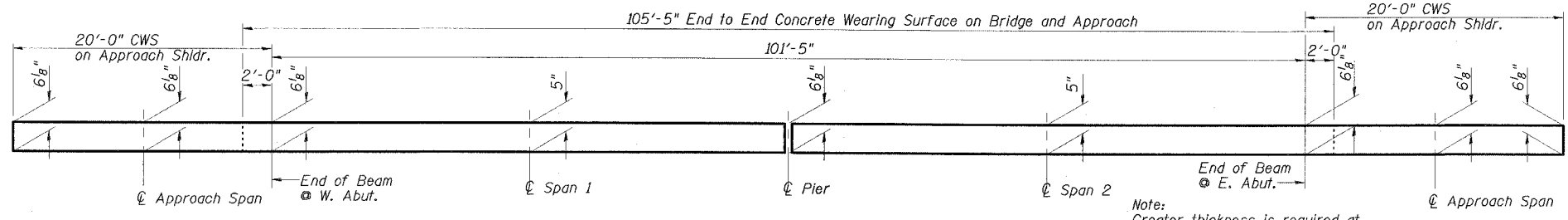
STATE OF ILLINOIS
DEPARTMENT OF TRANSPORTATION

| | | | | | |
|-----------------------|----------|------------------|----------|-------|--------------------------|
| ROUTE NO. | SECTION | COUNTY | SUBSECT. | SHEET | SHEET NO. 5 18 SHEETS |
| FAS 899 | 8BR-2 | SALINE | 75 | 40 | |
| FED. ROAD DIST. NO. 9 | ILLINOIS | FED. AID PROJECT | | | |

78028

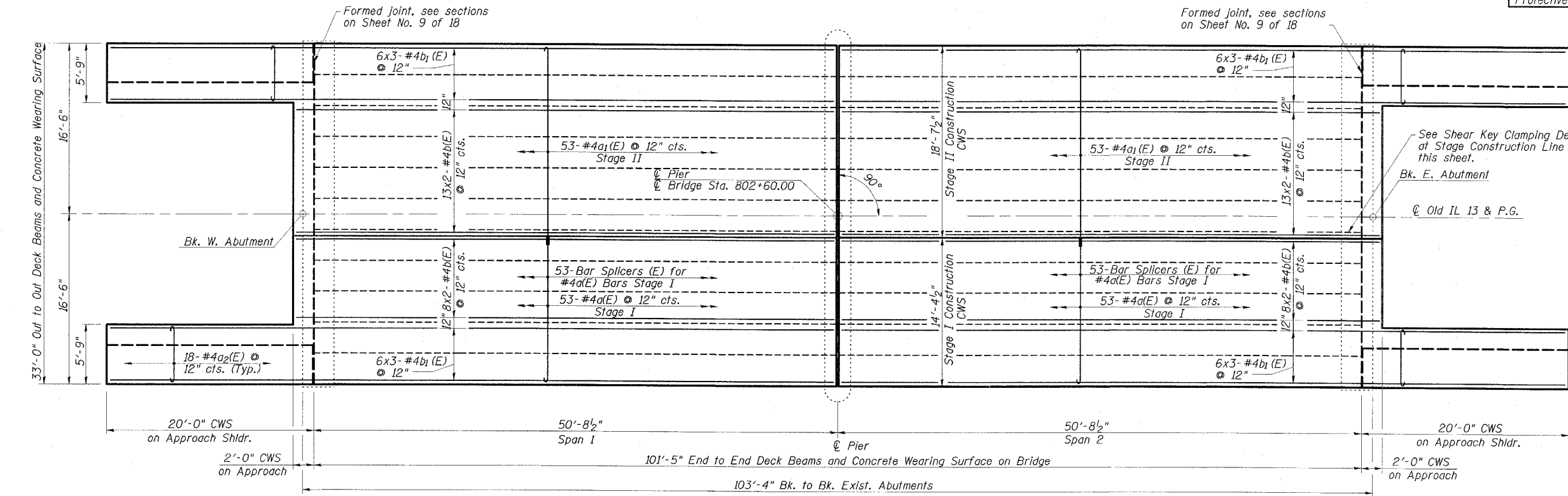
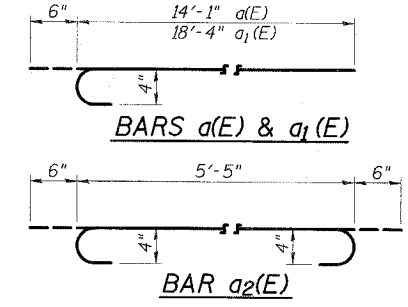
CONCRETE WEARING SURFACE
BILL OF MATERIAL

| Bar | No. | Size | Length | Shape | |
|----------------------------------|-----|------|---------|---------|------|
| a(E) | 106 | #4 | 14'-7" | | |
| a1(E) | 106 | #4 | 18'-10" | | |
| a2(E) | 72 | #4 | 6'-5" | | |
| b(E) | 84 | #4 | 27'-0" | | |
| b1(E) | 72 | #4 | 24'-8" | | |
| Reinforcement Bars, Epoxy Coated | | | | Pound | 5380 |
| Concrete Wearing Surface, 5" | | | | Sq. Yd. | 432 |
| Bridge Deck Grooving | | | | Sq. Yd. | 401 |
| Bar Splicers | | | | Each | 106 |
| Protective Coat | | | | Sq. Yd. | 432 |

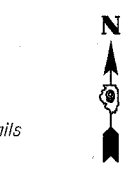


REINFORCED CONCRETE WEARING SURFACE PROFILE
(At edge of bridge deck)

Note:
Greater thickness is required at centerline of superstructure to conform to cross section slopes shown on Dwg. 7 of 18.



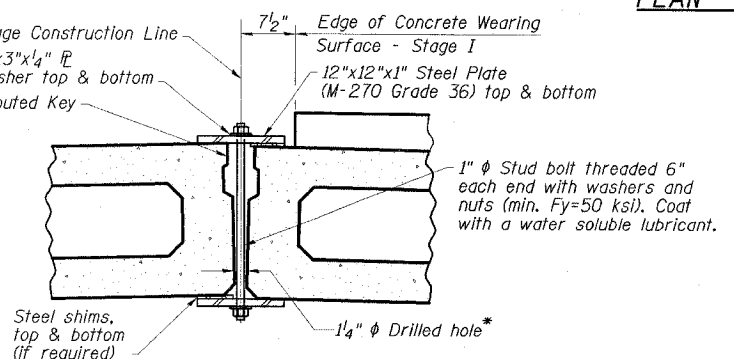
PLAN - WEARING SURFACE



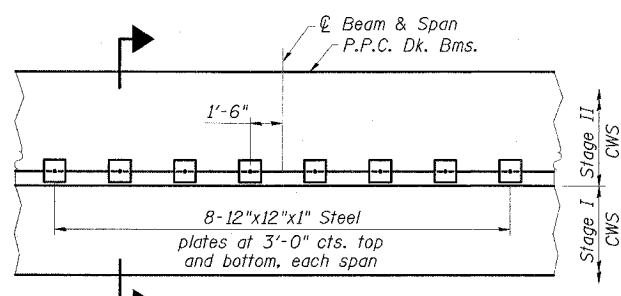
MIN. BAR LAP
#4 bar = 1'-8"

Note:
Reinforcement bars designated (E) shall be epoxy coated. Bars indicated thus 13x2-#4 etc. indicates 13 lines of bars with 2 lengths per line. For remainder of superstructure details, see drawings 6 thru 10 of 18.

*As an alternate to the drilled holes, the Contractor may request the Fabricator to cast 2" diameter semi-circular recesses in the sides of each beam adjacent to the stage construction line. These recesses should align to form a hole at the appropriate location for the clamping device bolts. If the Contractor elects to use this alternate, the details shall be identified on the shop drawings.

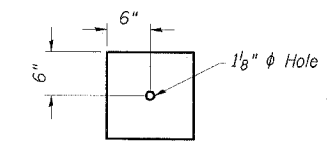


SECTION



PLAN
SHEAR KEY CLAMPING DETAILS

Note:
See Stage Construction Details for traffic lanes. Cost is included with Precast Prestressed Concrete Deck Beams.



CLAMPING PLATE

ESCA
CONSULTANTS, INC.

| | | |
|--------------|---------|-------|
| DESIGNED BY: | JMS | 10/07 |
| DRAWN BY: | CJ/HAS | 10/07 |
| CHECKED BY: | DAJ/ELH | 01/08 |
| APPROVED BY: | RDP | 01/08 |

SUPERSTRUCTURE
OLD IL 13 OVER BANKSTON FORK
FAS ROUTE 899 - SECTION 8BR-2
SALINE COUNTY
STATION 802+60.00
STRUCTURE NO. 083-0036