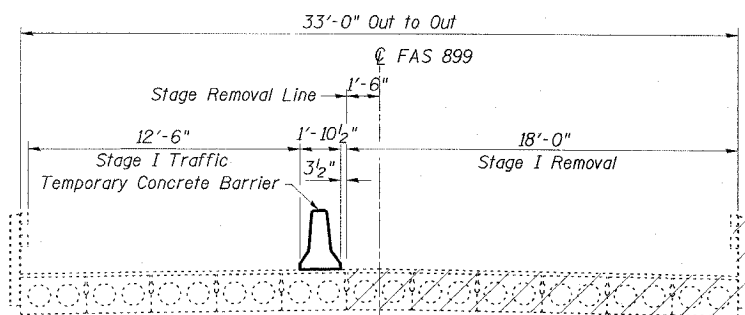


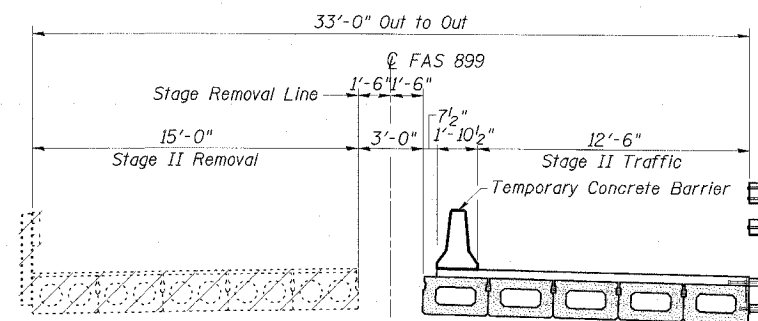
STATE OF ILLINOIS
DEPARTMENT OF TRANSPORTATION

ROUTE NO. FAS 899	SECTION BBR-2	COUNTY SALINE	SHEET NO. 75	PROJECT NO. 38	SHEET NO. 3 18 SHEETS
FED. ROAD DIST. NO.	ILLINOIS	FED. AID PROJECT			

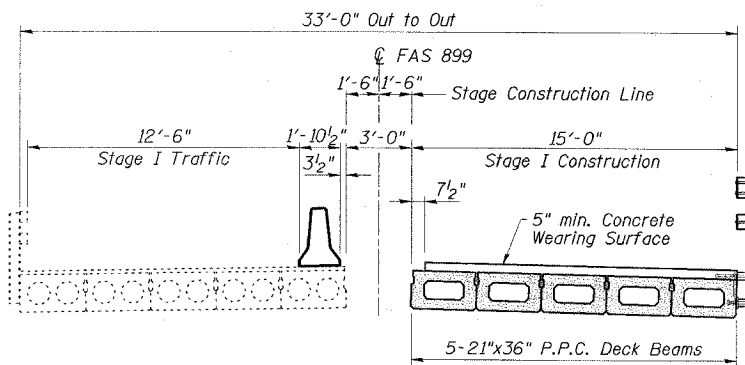
78028



STAGE I REMOVAL

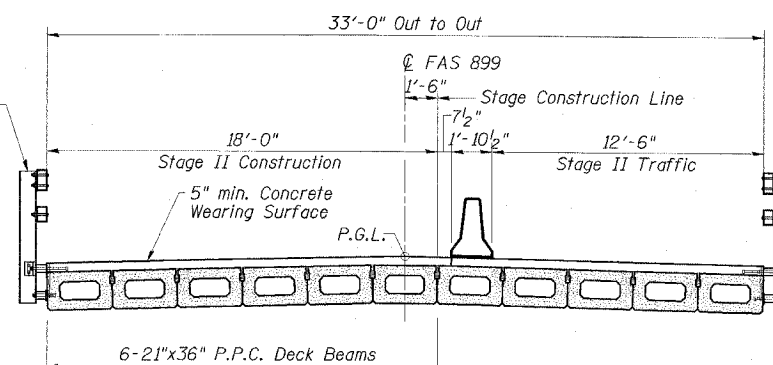


STAGE II REMOVAL



STAGE I CONSTRUCTION

Steel Railing, Type SM



STAGE II CONSTRUCTION

STAGE CONSTRUCTION NOTES

1. All staging sections are looking East.
2. See Dwg. No. 5 of 18 for shear key clamping details.
3. For quantity of Temporary Concrete Barrier, see Roadway Plans.

ESCA CONSULTANTS, INC.		
DESIGNED BY:	JMS	10/07
DRAWN BY:	CJ/HAS	10/07
CHECKED BY:	DAJ/ELH	02/08
APPROVED BY:	RDP	02/08

STAGE CONSTRUCTION DETAILS
OLD IL 13 OVER BANKSTON FORK
FAS ROUTE 899 - SECTION BBR-2
SALINE COUNTY
STATION 802+60.00
STRUCTURE NO. 083-0036