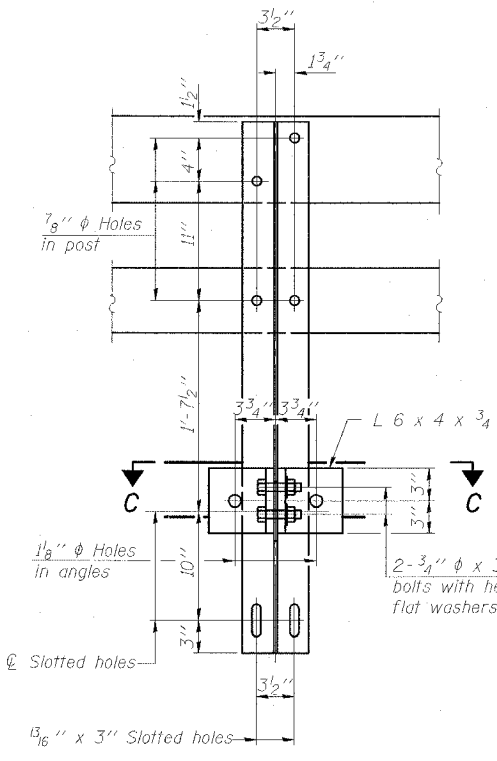
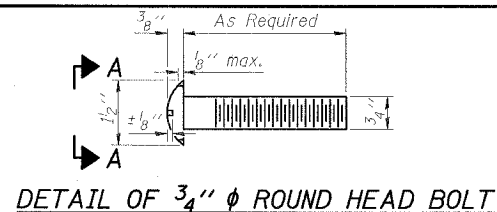


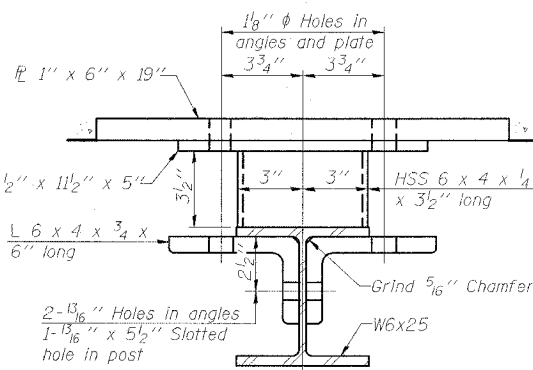
STATE OF ILLINOIS
DEPARTMENT OF TRANSPORTATION

ROUTE NO. FAS 899	SECTION 8BR-1	COUNTY SALINE	DATE 75	SHEET 24	SHEET NO. 9 13 SHEETS
FED. ROAD DIST. NO. 4		ILLINOIS	FED. AID PROJECT		

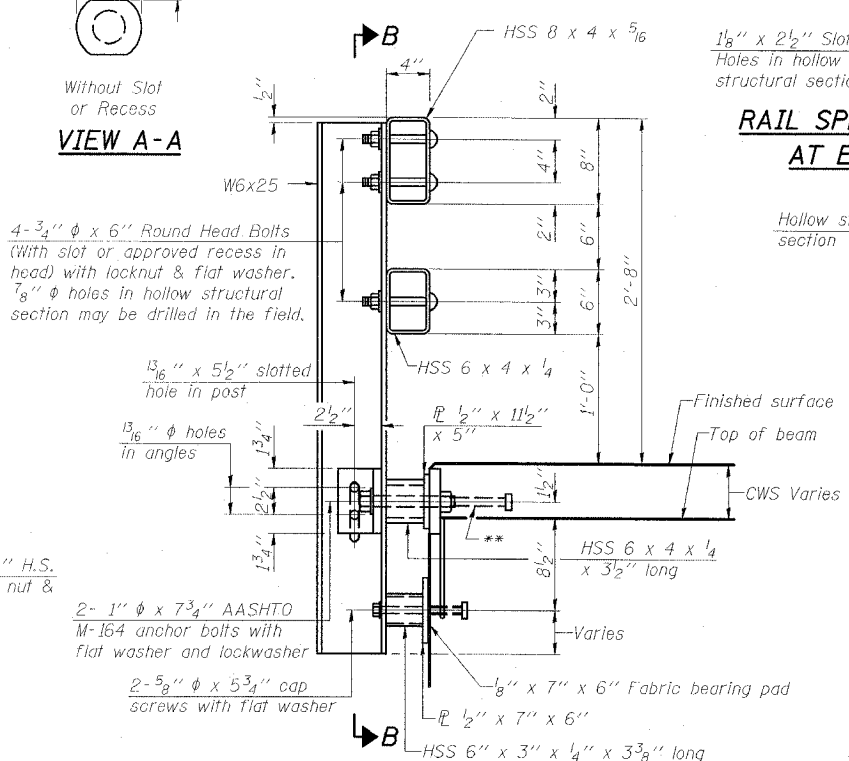
78028



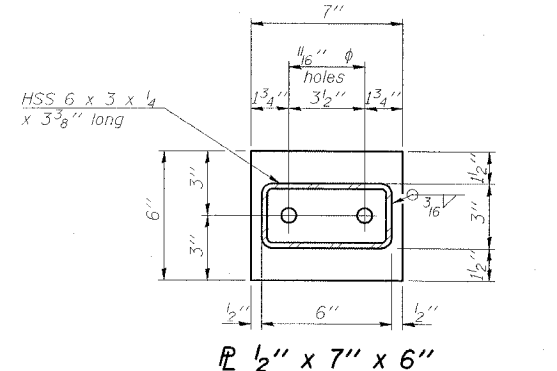
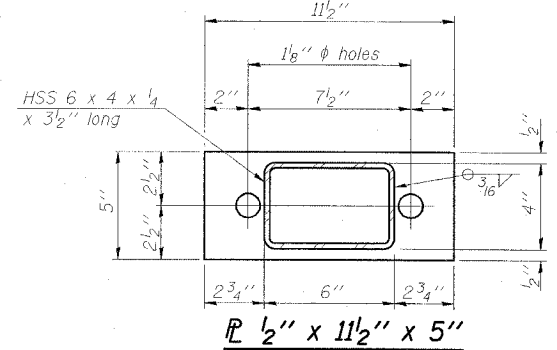
SECTION B-B



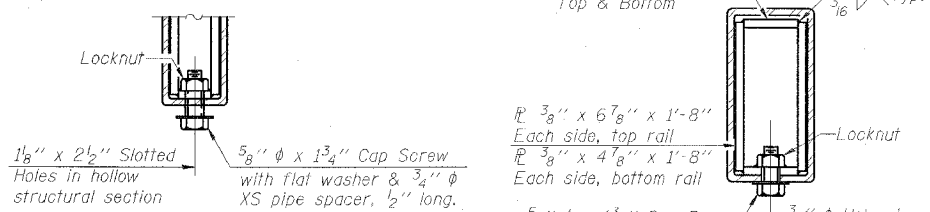
SECTION C-C



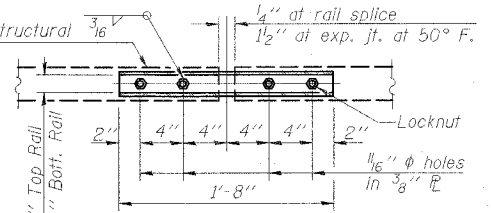
SECTION AT RAIL POST



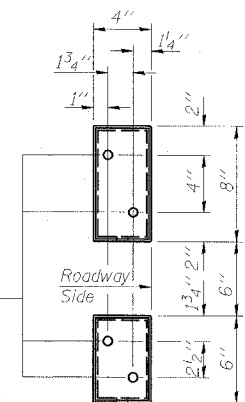
RAIL SPLICE CONNECTION
AT EXPANSION JT.



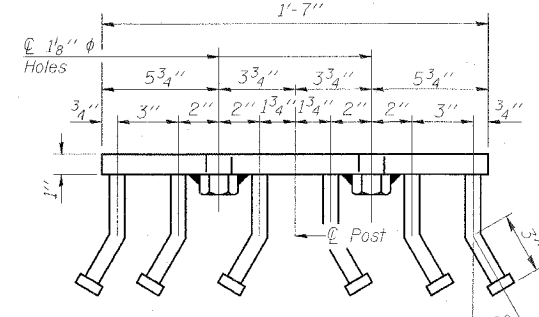
SECTION AT
RAIL SPLICE



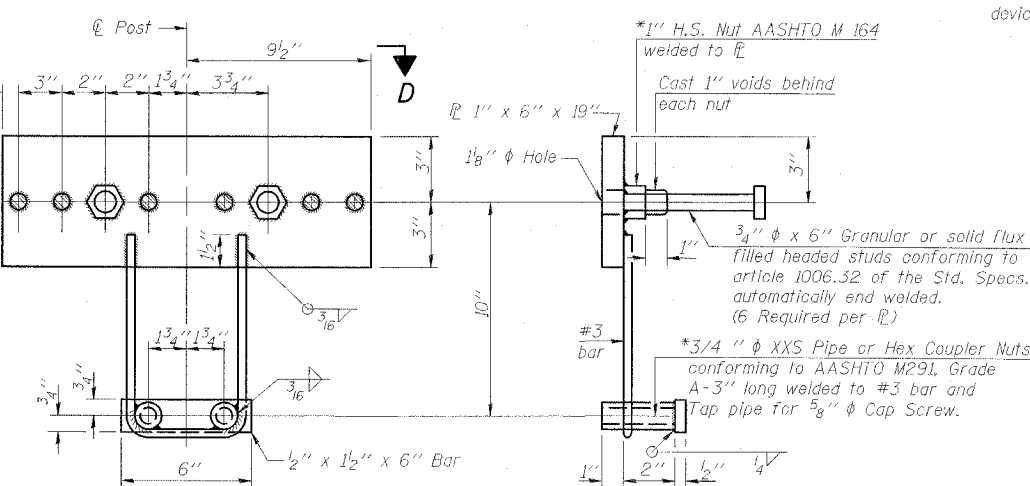
PLAN-BOTT. SPLICE R
TYPICAL



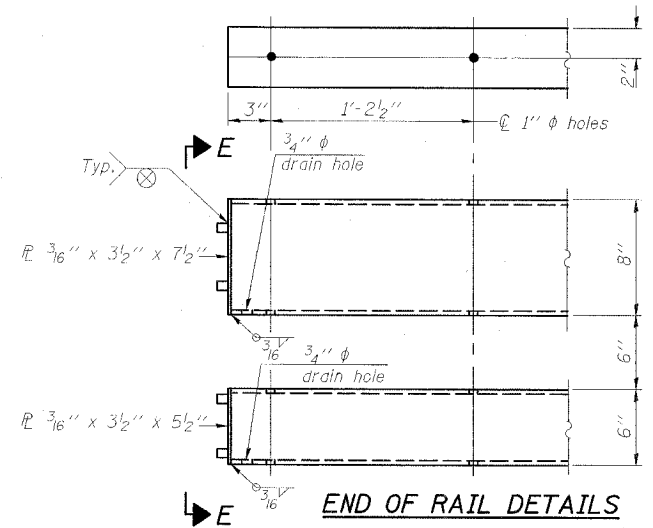
VIEW E-E



VIEW D-D



ANCHOR DEVICE



END OF RAIL DETAILS

Notes:
All field drilled holes shall be coated with an approved zinc rich paint before erection.
For multi-span bridges, sufficient 1/4" x 6" x 1'-2" galvanized steel shims shall be provided to align rail between adjacent spans. Cost included with Steel Railing, Type SM.
Steel rail elements shall be galvanized according to Article 509.05 of the Standard Specifications.
**The studs of the anchor devices shall be placed below the top reinforcement bars and the outermost longitudinal reinforcement bar shall be placed directly above the studs of the rail post anchor device.

BILL OF MATERIAL

Item	Unit	Quantity
Steel Railing, Type SM	Foot	70

STEEL RAILING, TYPE SM
OLD IL 13 OVER POSSUM TAIL BRANCH
FAS ROUTE 899 - SECTION 8BR-1
SALINE COUNTY
STATION 664+15.00
STRUCTURE NO. 083-0035

ESCA
CONSULTANTS, INC.

DESIGNED BY: JMS 09/07
DRAWN BY: CJ/HAS 09/07
CHECKED BY: DAJ/ELH 01/08
APPROVED BY: RDP 01/08

(6'-3" Maximum Post Spacing) (5" minimum to 7 1/8" maximum CWS thickness)

*Threaded areas shall be plugged or blocked off during casting of beam. Galvanized after fabrication.